













**WONDER ONE-CENT MAKES YOUR PENNIES WORK WONDERS**

**REXALL**

GET TWO REXALL PRODUCTS FOR THE

HE'S THE HOUSEWIFE'S CHAMPION

HE'S THE HOMEMAKER'S FRIEND



**SALE**

PRICE OF ONE—PLUS A PENNY

HE'S REXALL'S NUMBER ONE-GUET



**IT'S AMERICA'S GREATEST SALE... ON NOW THROUGH SATURDAY, OCTOBER 22**

- REG. 38c 16-oz. KORD'S RUBBING ALCOHOL 2 for 39c
- 16 TRANSISTOR PORTABLE RADIO ..... \$11.44
- 8-oz. LIQUID EYELO EYE LOTION ..... 2 for 99c
- 12's ADULTS OR INFANTS SUPPOSITORIES .. 2 for 54c
- 12-oz. Plain or Flavored MILK OF MAGNESIA 2 for 70c
- 18's REXALL SLEEP TABLETS ..... 2 for \$1.10
- 100's DICALCIUM PHOSPHATES ..... 2 for \$1.40
- 5-oz. LAVENDER DUSTING POWDER ..... 2 for \$1.76
- NAIL POLISH REMOVER (NON SMEAR) ..... 2 for 40c
- 4-oz. TUBE GEL DANDRUFF RINSE ..... 2 for 99c
- KLENZO ADULT TOOTH BRUSHES ..... 2 for 50c
- REXALL DELUX DENTURE BRUSH ..... 2 for 70c
- MEN'S WHITE SATIN HANDKERCHIEFS ..... 2 for 26c
- CERAMIC COFFEE MUGS ..... 4 for 99c
- AEROSOL AIR REFRESHER ..... 2 for 99c
- INFRA RED HEAT LAMP ..... 89c
- PKG. OF 200 PAPER NAPKINS ..... 27c
- FACIAL TISSUES — COLORS — PKG. 400 ..... 19c
- BABY THERMOMETER ..... 79c
- REG. 39c QUIK SWABS ..... 2 for 40c
- SURE SEAL ENVELOPES No. 10 SIZE ..... 2 for 26c
- ADHESIVE TAPE ..... 2 for 44c
- 300 COTTON BALLS ..... 49c
- REG. 65c PLAYING CARDS ..... 29c
- SEAMLESS NYLON HOSE IN PKGS. OF 3 ONLY ... 33c
- 100 SELF STACKING POKER CHIPS ..... 49c
- COLORED BATHROOM TISSUE — 4 ROLLS ..... 44c
- 2-oz. ZINC OXIDE OINTMENT ..... 2 for 60c

★ PLUS 100's OF OTHER ITEMS — SEE OUR CIRCULAR ★  
 9 REGISTERED PHARMACISTS TO SERVE YOU!

**BEYER REXALL Drug Stores**

3 CONVENIENT LOCATIONS:

MAIN & MILL STREETS  
 Beer, Liquor, Wine and Champagne  
 GL 3-3400

FOREST AVENUE  
 Opposite Stop & Shop  
 Beer, Wine and Champagne  
 GL 3-2300

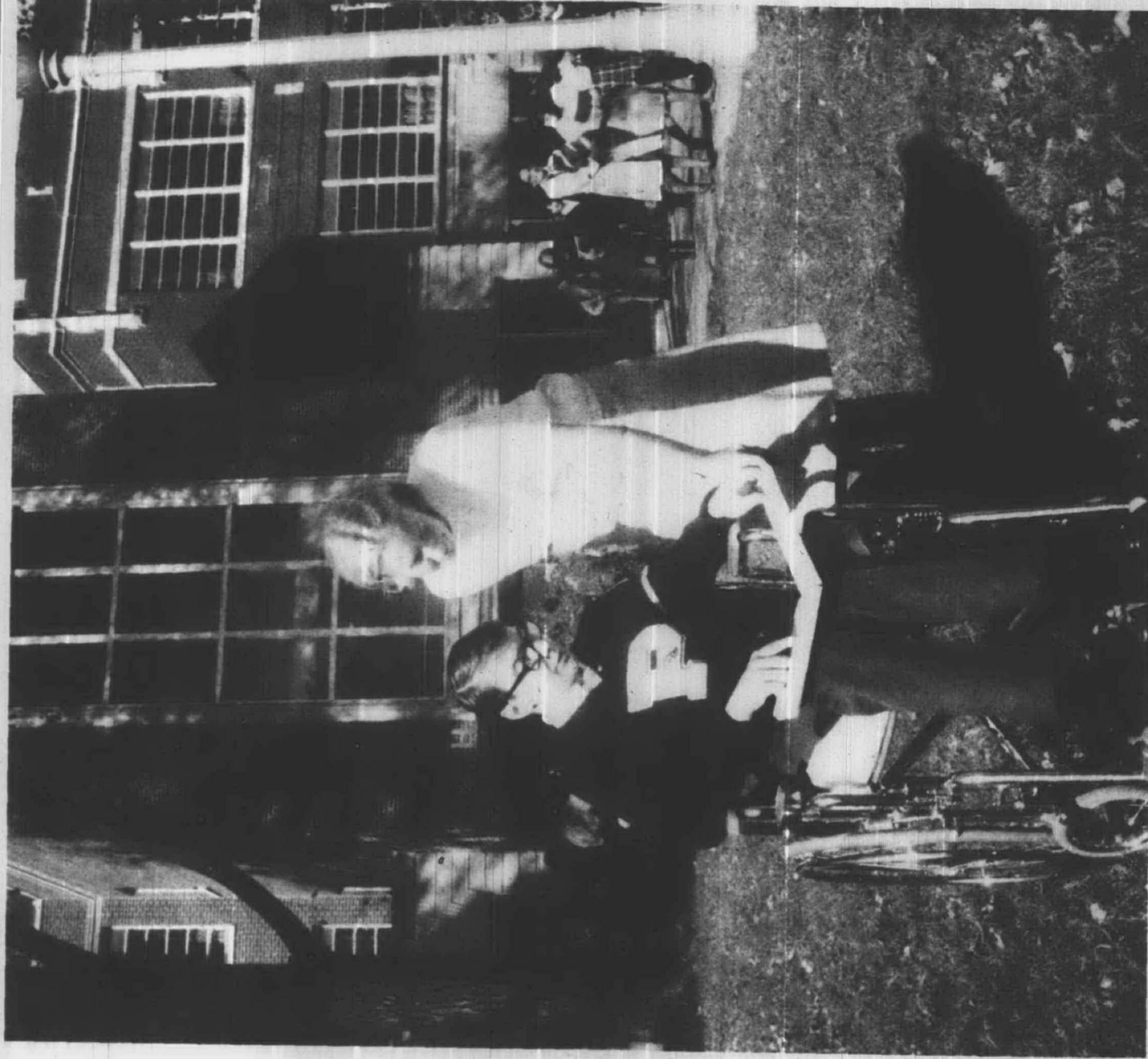
ANN ARBOR ROAD  
 Next to A&P  
 Beer, Wine and Champagne  
 GL 3-4400

OPEN NITES 'TIL 10 P.M. — SUNDAYS 'TIL 9 P.M.

Plymouth Mail Phones

Fast Action Want Ads 453-5500  
 Subscription Service 453-4620

Colonial Community



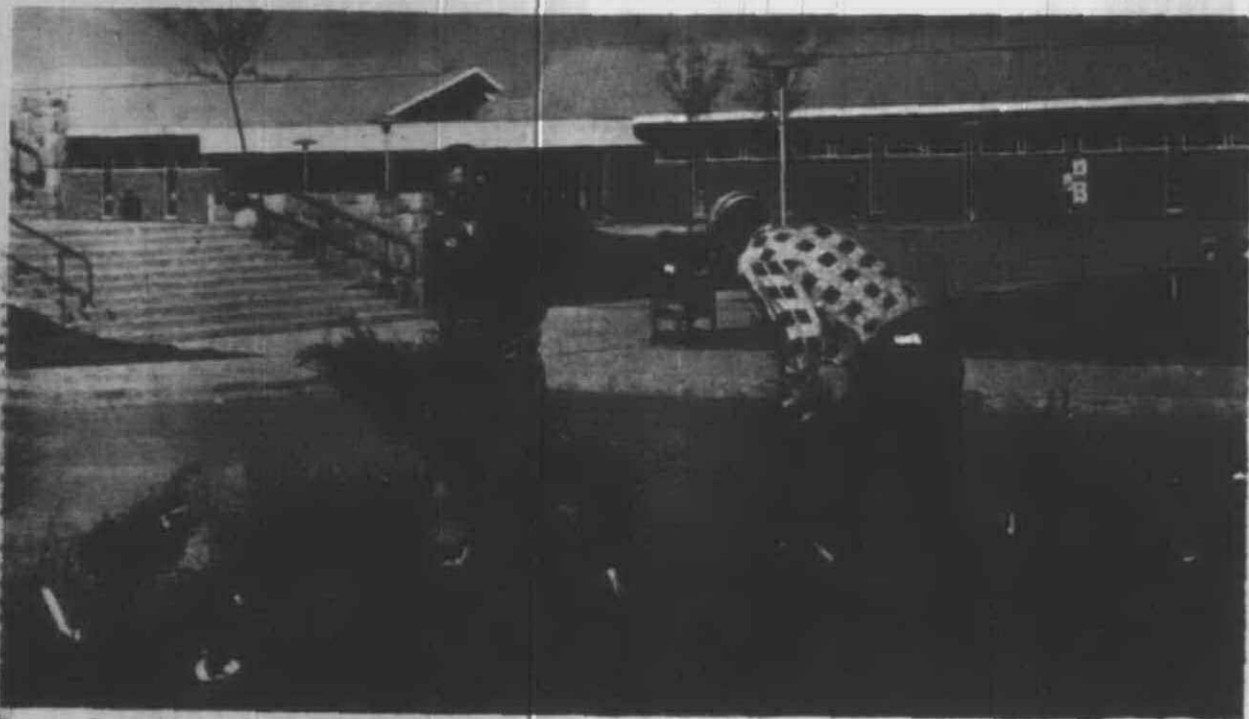
CRITICALLY INJURED two years ago in a car-bicycle accident that left him paralyzed from the waist down, Jeff Cardinal (in wheelchair) hasn't allowed his trouble to get him down. One of the most popular seniors at Plymouth High, Jeff and Mary Vallier are shown going over final plans for the annual homecoming program this weekend. They are the co-chairmen of a weekend that each believes will be one of the best ever in the community for a homecoming. Despite the wheelchair, Jeff attends every football and basketball game from a choice seat along the sidelines.

A section of the

**Plymouth Mail**







**CAMPUS LANDSCAPING BEGINS** — Workmen set one group of the nearly 200 low spreading junipers to be planted as part of a major landscaping program underway at the 139 acre Schoolcraft College campus. This first phase of the beautification project involves planting more than 300 trees and shrubs, seeding nearly 10 acres of lawn areas, landscaping construction work and planting ground cover. Davey Tree Co. is doing the work under a \$25,200 contract. Additional planting is planned for next spring.

## VFW Auxiliary #6695

Mayflower Post and Auxiliary members will make their annual trip to the VFW National Home at Eaton Rapids on October 16. Anyone making the trip has been asked to meet in the parking lot behind the VFW Hall at 10 a.m. This outing will be in conjunction with the rest of the Fourth District. Children are welcome and luncheon will be served at the Home for a small charge. For further information, call Mrs. Willard (Loretta) Olson.

The Veterans of Foreign Wars National Home is a farm home of 640 acres located four miles from Eaton Rapids. This home was built as a living memorial to fallen comrades and the upkeep is the sole responsibility of the many posts and auxiliaries throughout the United States.

There are approximately 34

brick houses, a hospital, a community center, nursery, chapel, guest house, House Mothers' cottage, playground, swimming pool, laundry, store and administrative and farm buildings. Approximately 200 orphans and from 15 to 20 widows of veterans are housed there. Better than 1800 children have been cared for and have gone on to colleges, jobs, and the armed services. This year a new library was dedicated. Local and State post and auxiliary units contributed over \$22,000 for books.

Three new homes were built and dedicated this year by other states.

Children and widows of all Veterans of Foreign Wars who have held membership in the VFW for at least one year are eligible. The post must apply and sponsor the children to the

Home. This project is a father's insurance that his family will have a home if he becomes physically unable to provide for them.

### New Books At Dunning Hough

"The Martlet's Tale", a masterful novel by Nicholas Delbanco, concerns a death and an inheritance in Greece. A wealthy matriarch confides the location of her fortune to her grandson on the condition that he not search for it until after her death.

"On Weaving" by Anni Albers discusses textile fundamentals and principles. Over 100 plates supplement the text.

"Giles Goat-Boy" by John Barth has aroused mixed reactions from the critics.

## School population hits 7,513

The Plymouth School system has a record enrollment of 7,513.25 at the end of classes on the fourth Friday of the school year. This includes 83.75 in the evening school.

That was the figure announced Monday by Asst. Supt. in charge of Business Melvin Blunk who had estimated the total enrollment at 7,432.

Plymouth High has the most students in history with a total of 1,444.5 according to figures turned over to Blunk at the conclusion of classes Friday. This compares with 1,320 on the same date a year ago.

The school district had an enrollment of 6,742.5 on membership day in 1965.

The membership day figures for this year and last are: Allen, 587-536; Bird, 643-571; Farrant, 676-703; Gallimore, 538-440; Geer, 40-55; Smith, 571-532; South Salem Stone, 35-30; Starkweather, 437-439; Tanger, 343 (new this year); Truesdell, 77-66; Junior High East, 995-987; Junior High West, 1,044-1,028; Senior High, 1,444.5-1,320; evening school, 82.75-35.5.

**REGULAR SAVINGS EARN**

• With **DAILY INTEREST** you earn every day on every dollar from date of deposit to date of withdrawal.  
• Interest is paid and compounded January 1, April 1, July 1 and October 1.  
• No interest penalty attached to withdrawing savings.

**4%**

**SAVINGS CERTIFICATES EARN**

• When held for one year.  
• 4% daily if redeemed on 30 day notice.  
• Issued in multiples of \$1,000.  
• Interest paid monthly or quarterly or annually as desired.

Your deposits are insured up to \$10,000 by the Federal Deposit Insurance Corporation.

**5%**

**MICHIGAN BANK**

NATIONAL ASSOCIATION  
open 'til 4:30 every weekday, including SATURDAY, branches open 'til 6 p.m.  
44421 Ann Arbor Rd. Plymouth

## Take A Good Look... You'll See...



**Bonnie Discount**  
Has the Lowest Prices  
In Town On  
Health & Beauty Aids!

- Reg. \$2.00 Value, Gentle, Super or Regular  
**Toni Permanent** . . . . . Kit \$139
- Reg. \$1.00 Value, Hard-to-Hold or Regular  
**Breck Setting Lotion** . . . . . 8-Oz. Bottle 72¢
- Reg. 98¢ Value  
**Head & Shoulders Shampoo** . . . . . 2.7-Oz. Tube 79¢
- Reg. \$1.75 Value  
**Richard Hudnut Shampoo** . . . . . Pint Bottle 83¢
- Reg. \$1.75 Value, Loving Care Wash Away Grey  
**Hair Coloring Shampoo** . . . . . 2-Oz. Kit \$108
- Reg. \$2.00 Value, 12 Shades  
**Nice & Easy Coloring** . . . . . Kit \$144
- Reg. \$3.50 Value, Liquid or Cream  
**Oil of Olay** . . . . . 4-Oz. Size \$259

REG. 75¢ VALUE

**Ban Roll-on**  
DEODORANT

1 1/2-Oz. Size **57¢**

- Liquid, Regular or Iron  
**Similac Baby Formula** . . . . . 13-Oz. Can 23¢
- Reg. \$1.19 Value  
**Coricidin Cold Tablets** . . . . . Bottle of 25 78¢
- Reg. \$1.19 Value  
**4-Way Cold Tablets** . . . . . Bottle of 50 86¢
- Reg. 45¢ Value, Liquid Aspirin  
**Cepacol Throat Lozenges** . . . . . Box of 24 36¢
- Reg. 89¢ Value  
**Liquiprin for Children** . . . . . 50 C.C. 64¢
- Reg. \$1.75 Value  
**Maalox Liquid** . . . . . 12-Oz. Bottle 88¢
- Reg. \$1.00 Value, Nasal  
**Privine Spray & Drops** . . . . . 15 M.L. 72¢

## PLYMOUTH VOTERS, ...here's the record:



Congressman Wes Vivian

### No. 3 - Highway Safety

Congressman Wes Vivian was one of the original sponsors of Federal legislation to require safety standards for automobile tires. He also sponsored the Highway Safety Act and Automobile Safety Act of 1965, and voted for them in the United States House of Representatives.

His opponent was **ABSENT** when the State House of Representatives passed legislation making a driver's license probationary for the first year it is issued. He was also **ABSENT** when the House of Representatives voted to make it a misdemeanor for a driver to fail to stop when signalled to do so by a uniformed officer.

### No. 4 - Community Colleges

Congressman Wes Vivian was one of the sponsors of the Higher Education Act of 1965, and voted in the House of Representatives for its passage. This act is providing Federal funds to assist Second District community colleges in meeting the needs of their communities.

His opponent was **ABSENT** when the Michigan House voted assistance to our State's community colleges, including those in Washtenaw and Monroe Counties. (*Michigan Education Journal*, Sept. 1966)

(He was absent on over 40% of all roll call votes!)

## RE-ELECT WES VIVIAN

... your full-time U.S. Congressman!

Democrat

paid pol. adv.  
Comm. to Re-Elect Wes Vivian  
Robert W. Carr, Co-ord.

NEW 20-OZ. SIZE

**Listerine**  
Antiseptic

Reg. \$1.29 Value

20-Oz. Bottle **88¢**

REG. \$7.98 VALUE, SQUIBB'S

**Theragram M**  
Vitamins

Bottle of 100 **\$5.68**

Double Edge  
**Personna Stainless Blades** . . . . . Pkg. of 10 **88¢**

Reg. \$1.25 Value  
**Old Spice After Shave** . . . . . 4.25-Oz. Bottle **89¢**

Reg. 98¢ Value, Menthol, Spice or Regular  
**Palmolive Rapid Shave** . . . . . 11-Oz. Aerosol **62¢**

Reg. \$1.29 Value  
**Mennen Spray Deodorant** . . . . . 7-Oz. Aerosol **99¢**

Reg. 98¢ Value, Family Size  
**Crest Toothpaste** . . . . . 6.25-Oz. Tube **63¢**

Reg. 79¢ Value  
**Polident Denture Tablets** . . . . . Pkg. of 26 **59¢**

Reg. \$1.45 Value, for Aching Muscles  
**Absorbine, Jr.** . . . . . 4-Oz. Size **\$1.11**

Reg. 49¢ Value  
**9-Volt Transistor Battery** . . . . . Each **17¢**

NEW IMPERIAL SIZE, REG. \$2.50 VALUE

**Aqua-Net**  
HAIR SPRAY

1-Lb. Net Wgt. **69¢**

Reg. \$1.35 Value  
**Emperin Compound** . . . . . Bottle of 100 **99¢**

Reg. \$3.29 Value  
**Zestabs Chewable Vitamins** . . . . . Bottle of 100 **\$2.29**

Reg. \$3.19 Value  
**Day-Lee Plus Iron** . . . . . Bottle of 100 **79¢**

Reg. \$1.69 Value, 250 MG  
**Gordon's Vitamin C** . . . . . Bottle of 100 **89¢**

Reg. \$8.45 Value, High Potency  
**Myadec Vitamins** . . . . . Bottle of 100 **\$4.69**

Reg. 79¢ Value, Medicated  
**Chap-ans Hand Cream** . . . . . 3-Oz. Tube **47¢**

Reg. 98¢ Value, Medicated  
**Stri-dex Pads** . . . . . Pkg. of 42 **69¢**

Reg. 98¢ Value  
**Pick Etiquet** . . . . . Roll-on Stick, Cream **37¢**

# BONNIE

## DISCOUNT STORES

930 W. Ann Arbor Trail, Plymouth, Mich.

STORE HOURS:  
Daily Till 8 p.m.  
Friday Till 9 p.m.  
Saturday Till 8 p.m.  
CLOSED SUNDAYS

LOWEST  
PRICES  
IN TOWN









# THE SUPERMARKET THAT'S JUST A LITTLE BIT BETTER

# Stop & Shop

470 Forest Avenue  
Plymouth



Prices Effective Wednesday,  
Oct. 12 through Tuesday, Oct. 18



The Know How of Intelligent  
Meat Buying  
is Really the "Know Where"

Our customers have learned to depend on the outstanding quality of Stop & Shop meats - unflinching satisfaction with every cut they purchase. The finest quality, together with the experienced expertise of our meat cutting experts, makes an unbeatable combination!

"TRIPLE R FARMS" U.S.D.A. CHOICE

## CHUCK ROAST

Blade  
Cut

# 43<sup>c</sup> lb.

"Triple R Farms" Fresh Dressed

## Fryers Grade A Whole . . . . . 29<sup>c</sup> lb.

"Triple R Farms" U.S.D.A. Choice  
**Chuck Roast** . . . . . 53<sup>c</sup> lb.

"Triple R Farms" U.S.D.A. Choice  
**Chuck Roast** Round Bone Cut . . . . . 69<sup>c</sup> lb.

Stop & Shop's Fresh, Lean, All Beef  
**Hamburger** 3-lb. Units or More . . . . . 49<sup>c</sup> lb.

Fresh, Lean, Tender  
**Pork Chops** Center Cut Rib . . . . . 79<sup>c</sup> lb.

Lean, Tender, Boneless and Cubed  
**Pork Cutlets** . . . . . 79<sup>c</sup> lb.

"Triple R Farms" Hickory Smoked  
**Picnics** . . . . . 43<sup>c</sup> lb.

Spencer's Hickory Smoked  
**Bacon** . . . . . 79<sup>c</sup>

"Triple R Farms" Michigan Grade 1  
**Sliced Bologna** . . . . . 49<sup>c</sup> lb.

"Triple R Farms" Michigan Grade 1  
**Ring Bologna** Garlic or Plain . . . . . 53<sup>c</sup> lb.

"Triple R Farms" Homemade  
**Pork Sausage** . . . . . 49<sup>c</sup> lb.

Dole Pink Drink  
**Pineapple-Grapefruit** 3 1-qt., 14-oz. Cans . . . . . 89<sup>c</sup>

Del Monte  
**Catsup** . . . . . 5 14-oz. Bottles \$1

Duncan Hines  
**Cake Mixes** . . . . . 3 18 1/2-oz. Boxes 89<sup>c</sup>

Stokely's  
**Pumpkin** . . . . . 1-lb., 3-oz. Can 23<sup>c</sup>

White or Assorted  
**Northern Tissue** . . . . . 4-Roll Pack 29<sup>c</sup>

Shur-Good London Creme  
**Assorted Cookies** . . . . . 1-lb., 2-oz. Pkg. 39<sup>c</sup>

Nabisco Chocolate  
**Chip Cookies** . . . . . 14 1/2-oz. Pkg. 47<sup>c</sup>

Sunshine  
**Krispy Crackers** . . . . . 1-lb. Box 29<sup>c</sup>

Hekman's  
**Graham Crackers** . . . . . 1-lb. Flip-Top Box 39<sup>c</sup>

### Farm Fresh Produce

Michigan Sno-White - Solid Heads  
**Cauliflower** 29<sup>c</sup>

Michigan U.S. No. 1  
**Potatoes** 10-lb. Bag 39<sup>c</sup>  
Mash 'Em - Bake 'Em - Fry 'Em



Tips from the  
STOP & SHOP CHEF  
Questions & Answers

What is cream of tartar and what effect does it have on ingredients with which it is combined?

Technically, cream of tartar is a purification of acid potassium tartrate. Combined with egg whites, its most frequent use, it stabilizes the whites after they are beaten, enabling them to retain the air. When cream of tartar is combined with egg whites for angel food cake, it makes for a lighter, whiter product.

Michigan  
Pure Granulated  
**Sugar**  
5-lb. Bag 48<sup>c</sup>

Maxwell House  
**Coffee** . . . . . 1-lb. Can 66<sup>c</sup>

Stop & Shop's Enriched, Sliced  
**White Bread** 5 1-lb., 4-oz. Loaves \$1

Breast O' Chicken  
**Tuna** Chunk Style . . . . . 6 1/2-oz. Can 29<sup>c</sup>

Libby's  
**Pork & Beans** With Molasses 14-oz. Can 13<sup>c</sup>

Ocean Spray  
**Cranberry Sauce** Strained or Whole  
1-lb. Can 23<sup>c</sup>

Domino  
Brown or 10X  
**Sugar**  
1-lb. Pkg. 15<sup>c</sup>

Del Monte  
**Tomato Juice**  
1-qt., 14-oz. Can 29<sup>c</sup>

McDonald's Prize-Winning  
**COTTAGE CHEESE**  
1-lb. Ctn. 27<sup>c</sup>

AT STOP & SHOP  
YOU GET  
GOLD BELL  
GIFT  
STAMPS

WE RESERVE THE RIGHT TO LIMIT QUANTITIES

OPEN MONDAY THRU SATURDAY 9 A.M. TO 9 P.M.  
CLOSED SUNDAY