

PHONE DIRECTORY	
General Office	GA 2-3160
Advertising	GA 2-3160
Want Ads	GR 6-7025 & GA 2-0900
Editorial	GA 2-3160
Circulation	GR 6-7025
Plymouth Office	GL 3-0038
Farmington Office	GR 6-7025
Garden City Office	GA 5-6335
Nankin Office	GA 5-6337

The Observer

OF PLYMOUTH

This Week's Press Run
87,450

The six Observer Newspapers are Michigan's Largest Weekly Newspaper Group. Complete up-to-the-minute news of local interest. Saturation coverage of dynamic Western Wayne County.

THE OBSERVER NEWSPAPER GROUP publishing newspapers in the cities of Livonia, Plymouth, Farmington, Garden City and Townships of Canton, Plymouth, Redford, Salem, Nankin, Farmington

VOL. 26—NO. 33

27

WEDNESDAY, SEPTEMBER 22, 1965

First Federal Building, Plymouth

Paul M. Chandler, Founder

Seeks Report, Recommendations for October Meeting

School Board Asks Study of Transportation Woes

The transportation problem that has plagued the Plymouth School Board for the past 10 days following complaints from parents in the Farrand School district, is no closer to settlement than it was then — but there is a more peaceful feeling between the two groups.

The Board, in a special session Monday night, voted to turn the matter over to a third party, the Traffic Study Division of the Wayne County Intermediate School Board for a study and recommendations in time for the October meeting. Then the recommendations

will be studied and Board members will decide whether to change its policy or to stand firm. This decision was reached after a lengthy discussion between a group of 12 parents, Principal Jerry Elston of Farrand School, six Board mem-

bers. Business Manager Melvin Blunk and Assistant Supt. William Harding. The parents are complaining that youngsters in grade three through five are required to walk to school this year when pupils living in the same areas were transported a year ago.

Key to the dispute is the installation of an easement directly behind Farrand School that reduced the walking distance by three-tenths of a mile and brought youngsters, who were formerly just beyond the mile limit, inside that borderline. The school board policy states

that students in grades kindergarten through six who live one mile or more from the school will be transported. Then the policy makes an exception for students in grades kindergarten through two who are exposed to exceptional traffic hazards and

who live less than one mile from the school will be transported. It was the exception that brought the ire of Farrand parents residing in the area north of Five Mile Road and West of Schoolcraft who learned their youngsters in grades three

through five would be required to walk whereas their youngsters in grades K through 2 were transported because of exceptional traffic hazards. They requested the exception be extended to include grades three through five but found the Board reluctant to change its policy unless it was on an overall basis for the entire school system. The Board requested the Administration to make a quick study of the situation on an overall basis and report back at Monday's meeting with facts and figures. Blunk made the Administration's report and told the Board a change in policy, involving transportation for grades three through five, would add 378 to the daily load from the public schools with additions from the parochial schools that would boost the total to 426. "We estimate this would require an additional two buses and drivers and would cost the school system \$13,000 for the buses and \$15,000 for the drivers," he said. Blunk broke down the figures as follows: Allen, 71 more; Bird, 134; Farrand, 56; Gallimore, 34; and Smith, 83. In his report, Blunk pointed out that the additions would come from all sections except one in which there were no sidewalks available for the students. The lone exception was in the Bird district where 87 pupils in that area north of Pennington Ave. would become eligible for transportation if the policy was changed. There are sidewalks available in that area but it has been tagged as one with hazardous traffic by the Board since it sanctions transportation for pupils in the K through 2 group. It was suggested that the Board consider a change in all but the one area but it was rejected immediately on the grounds that a change in policy will affect all areas not on a spot basis. Blunk pointed out that the school system has no idea at the moment how many will be riding the buses. "We know that only half of the first grade are being transported at the moment and that situation will exist until the new buses arrive in another week," he stated. "Many parents are taking their youngsters to school and generally do until the weather changes, then they stop and we will have an accurate count as to the total riding. That generally isn't until Nov. 1." Gerald Fischer, Board President, suggested that he favored

Township Residents Face Hike in Taxes

Plymouth Township property owners can look forward to higher tax statements this December as a result of a half-mill increase voted by the Township Trustees last week. But the boost—at least for Township financing—will be a comparatively minor one. The big bite comes from the 3.25-mill additional school tax levy approved last spring. Last week, Township Trustees approved a 4.5-mill 1965 tax rate, up from 4 mills levied a year ago. The increase amounts to only 50 cents per

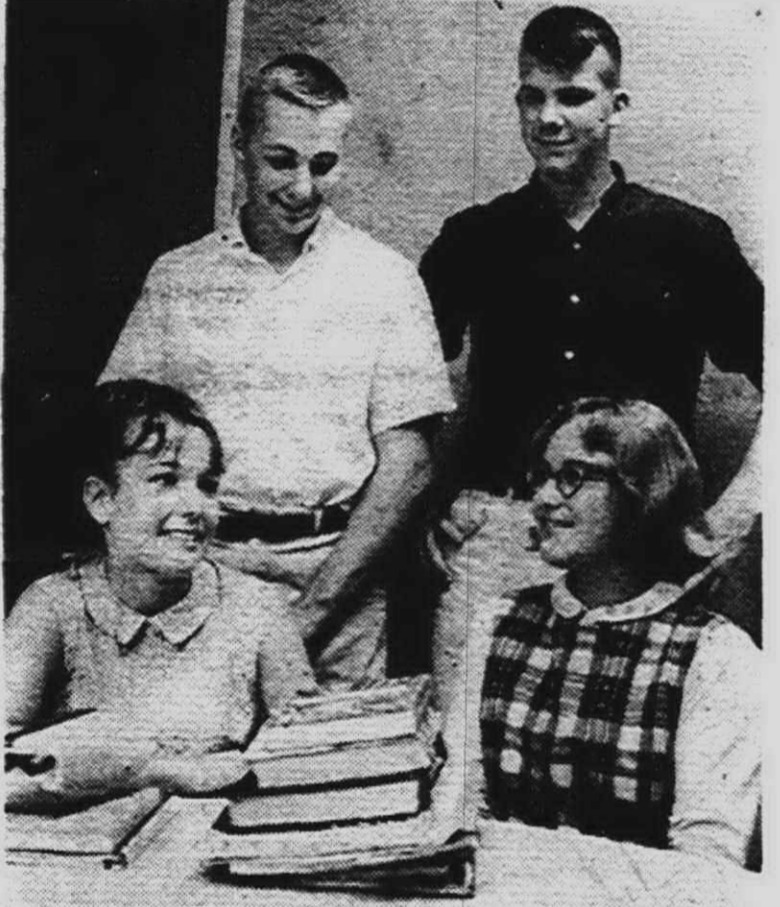
\$1,000 of assessed valuation—or \$2.50 on a house valued at \$5,000. The increase came in the form of a 4-mill hike to meet sewer bond indebtedness and identical boost for water bond obligations. Each fund was raised from 1.5 mills to 1.75. The levy to take care of general operation of the Township remained unchanged at 1 mill. The half-mill increase is expected to raise an additional \$30,000 during 1966. At present, the Township is

carrying a \$1,850,000 bonded indebtedness resulting from sewer and water expansion over the past seven years. The debt retirement schedule calls for the bonds to be repaid by the year 2000, but with further Township expansion looming large on the horizon sewer and water indebtedness may be expected to increase before it starts to decrease noticeably. The Township's property owners will be greeted by a considerably larger tax increase than just the half-mill hike when they open their statements this winter.



READY FOR FRIDAY'S home opener against Farmington and the first game under the new lighting system are starters for the Plymouth High varsity. The group includes: (backfield from left) Halfback Jon Adams, Fullback and Co-Captain Curt Irish, Quarterback Steve Hulce and Halfback Jim Arnold. The line (from left) End Dave Eisenlord, Tackle Jim Elias, Guard

Torb Guenther, Center Bill Ward, Guard Roger Smith, Tackle Steve Stribley and End Jim Warnemuende. The kickoff is slated for 8 p.m. under the brightest lights the Rocks have ever played under in Plymouth—thanks to the financial support of the Plymouth Rotary Club.



SEMIFINALISTS in the National Merit Scholarship competition are these four Plymouth High seniors. They are: (seated left) Sue Hulce and Mary Fink; (standing from left) Dan Collick and Charles Catlett.

Four PHS Seniors Gain Semifinals in Scholarship Exams

Four Plymouth High seniors have been named semifinalists in the 1965-6 National Merit Scholarship competition according to word received by Principal Carvel Bentley. The quartet cited for high achievement are: Mary A. Fink, Charles Catlett, Susan Hulce and Daniel Collick. They are among the highest scoring students in Michigan in the National Merit Scholarship qualifying test, administered last March in over 17,600 schools nationwide. More than 14,000 semifinalists were appointed across the country. Mary Fink had the highest rating of the four from Plymouth High, landing a

spot among the top 200 in Michigan. To become finalists, the students must substantiate their qualifying test performance in a second examination, submit recommendations by their schools and fulfill routine requirements. All Merit Scholars for 1966 will then be selected from the finalist group. To increase their opportunities for financial assistance if they need it, NMSC sends the names of semifinalists to all regionally accredited colleges and universities and to other scholarship granting agencies and sources of financial aid. Studies show that about half of the semifinalists in former years have obtained financial aid from sources other than the merit program. At least 97 percent of past Semifinalists have become Finalists. Each Finalist receives a Certificate of Merit in recognition of his outstanding performance in the program. Finalists are eligible for the scholarships sponsored by NMSC and over 280 corporations, foundations, colleges, unions, trusts, professional associations, other organizations, and individuals. Names of the Merit Scholars chosen from among the Finalists will be announced about April 27, 1966. The exact number will depend on the extent of sponsor support. In 1965, over 2000 Merit Scholarships were awarded. High School grades, creative

Select Harold Fischer for Area Planning Post

After six months of intensive search during which time it interviewed and scanned applications of more than 15 candidates from the area, Michigan and out-of-state communities, the Plymouth Area Planning Commission Monday named Harold Fischer, 40875 Plymouth Road, as the new director.

Fischer, currently chairman of the Board of Trustees of Schoolcraft College and long active in community events, is a lifetime resident of Plymouth, attended Plymouth schools, is a graduate of Plymouth High and served six years on the Board of Education, two as president.

He was the unanimous choice of the nine-man commission which included three members each from the participating government units of the City of Plymouth, Plymouth Township and Canton Township. His appointment was announced Monday by School Supt. Russell Isbister, who

has been serving as ex-officio chairman of the commission since it was first organized more than a year ago. The Commission includes: Harold Guenther, Clarence Moore and George Lawton from the City; Trustee Ralph Garber, John Welscher and Clark Finlay from Plymouth Township; and Phil Dingledey, recently appointed Canton Township supervisor; Richard Palmer and Thomas Alexsy of Canton Township. Fischer received an unanimous vote of the eight members present. Palmer was absent from the selection meeting but indicated that he also supported Fischer.

The new director of area planning will receive a \$9,000 salary and an expense account, as yet undefined, and will have offices in the Chamber of Commerce with secretarial services. He will be signed to a one year contract. The Plymouth Area Planning Commission was organized for the express purpose of promoting and urging industry and commercial ventures to move into the community as a means of building up a higher tax base to support the school system. Fischer will start work on Oct. 1. "I'm happy to think the Commission selected me for this job," said Fischer, when contacted at his home shortly before starting a two week vacation in the southland. "I consider this a challenge not only for the commission but for the entire community. We plan to take every step possible to lure industry and commerce into the City, Plymouth Township or Canton Township for the express purpose of building a high tax base to support the school system. "Naturally, the same increase

Builder Chilled by Council

Builder Thomas Cape came to the Plymouth City Commission Monday night seeking assistance to get his 16 unit apartments open. He didn't get it. Rather the commission referred the matter to the City Attorney's office.



PLANNING COUNTRY FAIR and fall roundup program at Our Lady of Good Counsel Church Saturday afternoon and evening are members of the executive committee. They are: (standing from left) John Murawski, tickets; Treasurer Jeff Raume, Co-Chairman Clarence DuCharme and Mrs. Stephanie Miller, dinner chairman. Seated is Mrs. Mary Doherty, co-chairman of the affair.

He suggested that the commission change the zoning on the parcel of land so that he would fit the space requirements. Building Inspector Chuck Thompson had issued occupancy permits for 14 units that day and said that the land area was about 28 feet shy of meeting the ordinance. A second proposal was that he sign an agreement with three adjoining property owners obtaining easement for a road in return for gutters and curbing and the catch basins. Cape showed up without the agreement with the neighbors and he told the commission that he had set up meetings but that the three gentlemen had not shown up. The Commission told Cape that it had to have proof of action and good will on his part before it would take any

action. The new director of area planning will receive a \$9,000 salary and an expense account, as yet undefined, and will have offices in the Chamber of Commerce with secretarial services. He will be signed to a one year contract. The Plymouth Area Planning Commission was organized for the express purpose of promoting and urging industry and commercial ventures to move into the community as a means of building up a higher tax base to support the school system. Fischer will start work on Oct. 1. "I'm happy to think the Commission selected me for this job," said Fischer, when contacted at his home shortly before starting a two week vacation in the southland. "I consider this a challenge not only for the commission but for the entire community. We plan to take every step possible to lure industry and commerce into the City, Plymouth Township or Canton Township for the express purpose of building a high tax base to support the school system. "Naturally, the same increase

action. The new director of area planning will receive a \$9,000 salary and an expense account, as yet undefined, and will have offices in the Chamber of Commerce with secretarial services. He will be signed to a one year contract. The Plymouth Area Planning Commission was organized for the express purpose of promoting and urging industry and commercial ventures to move into the community as a means of building up a higher tax base to support the school system. Fischer will start work on Oct. 1. "I'm happy to think the Commission selected me for this job," said Fischer, when contacted at his home shortly before starting a two week vacation in the southland. "I consider this a challenge not only for the commission but for the entire community. We plan to take every step possible to lure industry and commerce into the City, Plymouth Township or Canton Township for the express purpose of building a high tax base to support the school system. "Naturally, the same increase

What's Inside

Plymouth Observer

Amusements	7-8B
A&P News	12A
Business Directory	11B
Bi-Lo News	16-17A
Church Directory	10B
Classified	11-19B
Editorial Page	18A
Food Fair News	14A
Home Improvements	8-9B
Kroger Food News	4A
Lunch Menu	13A
Sports Pages	2-3B
Stop & Shop News	1, 20B
Women's Pages	5-9A

Now We Know Festival Started As Picnic in '57

Just in case some club members didn't know when the first chicken bar-b-que was held, Rotarian Don Lightfoot read a financial report of the initial venture in Friday's weekly meeting in the Mayflower Hotel. It was from 1957—first of the series—that Lightfoot had the report, indicating this year's program was the ninth of the series. There is quite a difference in the financial reports of the 1957 event compared to that of 1965. Then, the Lightfoot report showed, the bar-b-que was in the form of an outdoor picnic at Hamilton playground. The net profits were \$505 with gross receipts of \$1,318. Robert Stremich, co-chairman

with Loren Gould of this year's program, made a partial report of the success. He told how \$10,000 sales were reported Sunday in Kellogg Park with additional monies coming from members who made advance sales. That's quite a growth in the period between 1957 and 1965—an afternoon picnic then to a four-day event now that attracts more than 50,000 to the community including about half that number on the climatic final day when the Rotarians serve their traditional chicken and corn. The festival has grown from a one-club, one-day affair to a four-day program that brings every club in the community into the numerous activities.

Plans OLGC Roundup, Auction Sale Saturday

Members of Our Lady of Good Counsel Church were busy Monday completing plans for the annual country fair and fall roundup Saturday morning, afternoon and evening in the church hall—the biggest fund raising event of the fall by the congregation.

It will be fun for all from the moment the grounds are opened shortly before noon until the final dinner is served in the evening. Highlighting the program is the annual auction sale in the afternoon in charge of Mrs. Rita Holland. Mrs. Holland and members of the committee have been busy collecting items for the traditional sale for several weeks and believe this year's offerings are the most unusual since the event was added to the fall roundup. There'll be baked goods in charge of Mrs. Rita Potak; a country store in charge of Mrs. Mary Gray; needlework offerings in charge of Mrs. Virginia Matley; stuffed animals in charge of Mrs. Betty Koch; and

soft drink stand which will be operated by the Teen Club. That's only part of the (Continued on Page 8A)



Harold Fischer

BURROWS HEADS INDUSTRIAL TEAM

Name Division Leaders For '65 Fund Campaign

John Kamego, general chairman of the 1965 Plymouth Community Fund campaign, Monday announced the makeup of the team he hopes will bring a victory in the drive for a record \$86,083 starting Oct. 11. The fund-raising will continue through Nov. 4. Kamego selected the seven division chairmen, who in turn will pick team captains to handle the various classifications of their particular section. He indicated he will meet with each of the chairmen next week to discuss plans for the campaign so that it will get off to a flying start from the torch-lighting kickoff luncheon on Oct. 11.

G. D. Burrows, of Gaylord Container Co., will head the all-important industrial division this year and Dr. Ray Barber, president of the Lions Club, will be in charge of the professional division. Other division chairmen are: business—Terry West of the National Bank of Detroit; government—former Mayor Robert Sincok of the J. L. Hudson Realty Co.; education—James Doyle, counselor at Plymouth High and president of the Plymouth Education Association; residential—Mrs. Martin Schomberger, and special events—Mrs. Sidney Strong. Kamego pointed out that the most (Continued on Page 8-A)



A BIG INCREASE in donations to ALSAC (the teenagers' anti-leukemia fund drive) was recorded this year in Livonia, as more than \$5,600 was collected by volunteers last week. Maura Taormina, 14, 9611 Cranston, (left) was the top individual collector, with \$56.75 to her credit. As ALSAC chairman Diane Gustin (center) looks on, she congratulates Les Halasz, 17, 27731 Buckingham, top area chairman who turned in \$305. Last year's drive netted \$3,500.

Plymouth Kiwanis Club To Sponsor Peanut Sale
Members of the Plymouth Kiwanis Club will take to the streets Friday and Saturday for the annual Kids Day peanut sale with all of the profits going into the club's children's fund. The two-day event is in charge of Robert Utter, chairman of the Kiwanis' Special Events Committee. Utter indicated Kiwanians will be on the downtown street corners from 10 a.m. to 8 p.m. Friday and from 9 a.m. to 1 p.m. Saturday. If you are interested in aiding the children's fund and if you

Set Club Roundup
The annual fall Cub Scout Roundup for Pack 287 will be Sept. 22 at 7:30 p.m. at the Botsford School. The pack is open to any boy who has reached eight years of age. For further information contact Assistant Cubmaster Jim Tigani at KE 7-4386 or Committee Chairman Milt Goldman at 476-4815.

HEAR THEM PLAY!
Friday & Saturday Nights
RINKY TINKERS
Jim McDonald — Bernie Boudreau
ZUBOK'S BAR
6356 GREENFIELD, DEARBORN
(between Ford and Warren)

Invite All Suburbanites to Enroll in Livonia Night School Classes

Registrations for more than 170 hobby, cultural, vocational, and liberal arts classes to be held in the Livonia public schools this fall will be taken at Bentley High School tonight, tomorrow, and Friday from 7:30 to 9 p.m. Fees for residents and non-residents range from \$20 for classes as auto tune-up, gem craft, or machine shop to \$5 for group guitar, creative dance, oral interpretation, or creative drama. Many other courses such as swimming, judo, and basic sport skills have a tuition tag of \$6 while the greatest number of offerings such as plastic techniques, home gardening, cake decorating, rug hooking, public speaking, business mathematics, and show card design cost \$9.

City Wins Award for Its Report

The City of Plymouth won first place for its annual report mailed to the citizens at the Michigan Municipal League Conference last weekend in Grand Rapids. Plymouth placed first in the Class III category which was open to towns and cities with a population of less than 10,000. Day-dreamers come up with theories that hit practical snags.



WESTLAND'S FALL fashion festival in the beautiful East Court of the shopping center, Wayne and Warren Roads, with commentator Dee Stocks (in background) featured fashions from Westland's leading stores. For the pleasure of residents of this area a fashion show will be held every Tuesday at 2 p.m.

LIKE ALWAYS LOWEST PRICES

New!
A VINYL COATED CEILING HIGHLAND
EMBOSSED TEMLOK®
from **Armstrong**

WIPES CLEAN INSTANTLY
MODERN VINYL SURFACE

The textured vinyl surface of this new Armstrong Ceiling resists grease and other common household stains. Comes clean with a few swipes of a damp sponge. So easy to install you can do it yourself. Highland Embossed Temlok is especially suited for kitchens or other areas where repeated cleaning may be necessary.

LIVONIA'S LARGEST STOCKING ARMSTRONG CEILING TILE DEALER!

SHUTTERS
Exterior 14x35 1/2 SHUTTERS \$6.90 pair
Never, rot, chip, crack, blister or dent. Other sizes in stock.
As low as
White pine, Adjustable Louver as low as **69¢**



INTERIOR SHUTTER
We Custom Size to Your Specifications

Panel it with **Tomok '65 WELSH**
Capturing the beauty of oak in a great new paneling...
that's real wood, but 5 times harder
4x7 Sheet **\$5.99**

2x4x7	2x4x8
44¢	56¢

FURRING STRIPS
1x2 ... 2c lineal foot
1x3 ... 3c lineal foot

BE COZY ALL YEAR AND **SAVE UP TO 40% ON WINTER FUEL**

Aluminum Foil-Faced Vapor Barrier
Superfine glass fibers give permanent efficiency

INSULATION YOUR CHOICE!
1 1/2" Thick—100' Roll
2 1/4" Thick—75' Roll
3 7/8" Thick—50' Roll
Your Choice! **\$3.69**

LADDERS!
STEP LADDERS
6' Wood \$3.99
Limited Quantities

EXTENSION ALUMINUM
20' \$15.88
ALUMINUM
24' \$19.88
Other Sizes Available

DESIGNED FOR YOU **INDEPENDENCE GREEN**

Live like a millionaire at a low monthly cost!
Independence Green luxury apartments offer all year 'round chore-free living.

Included with the magnificent view of the 18-hole golf course residents enjoy a modern luxurious apartment, complete with carpeting, drapes, all appliances including washer and dryer, and if desired, complete furnishings. In addition probably one of the most magnificent Country Club facilities in the country, modeled after the Independence Hall in Philadelphia. An exact imitation of size, style and detail of the historic building. The interior, to provide 38,000 square feet of floor area will be devoted to swimming pool, (indoors) club rooms, lounges, breakfast room, dining room, locker rooms, pro-shop for the golfers, offices, private dining rooms, bar, sauna bath, card rooms, ballroom, billiard room, t.v. rooms, library, teen room, sun deck, nursery, and other activity rooms. The residents at Independence Green will have tennis courts and still more ideas are in the making. There are almost 2,000 apartments, varying in size from the efficiency to 4-bedroom luxury models, in addition to a 180-room motel and shopping center in the round, will offer a quietude and luxurious way of life, which cannot be compared.

Goodbye lawnmower! Goodbye rake! hoe! Goodbye backache!
All exterior maintenance and community landscape is taken care of for you!

LUXURY FEATURES:
Large sliding glass patio doors (lower level), built-in vacuum cleaner, air conditioned, large, airy carpeted rooms, tastefully decorated.

COMMUNITY FEATURES:
Theater groups, Farmington Country Club and community service organizations may become part of your fullest life's love!

INDEPENDENCE GREEN
At the "Cross Roads of Michigan"
Grand River at 10 Mile Road Farmington
474-7284

GALVANIZED GUTTERS
8' lengths **88¢**
We carry all fittings at similar savings.

Aromatic **CEDAR SHAVINGS**
For Pets large box **96¢**

Famous DuPont **LUCITE**
The "Dripless" Paint
White only **\$3.99** gallon

YOUR CHOICE! **GLIDDEN Endurance OIL BASED OUTSIDE HOUSE PAINT OR NEW ACRYLIC LATEX SPRED HOUSE PAINT**

... cuts painting work from days to hours. Covers Wood Masonry, Primed Metal. Dries in Wash brushes 30 minutes with water. Reg. \$7.95 gal. **6.49** Gallon

MASONITE ROYALKOTE PANELING
All Perfect All Prefinished 48 x 36
All "A Grades" Choice of seven beautiful wood grains. **\$1.99**

DOOR SALE!
POPULAR **MAHOGANY FLUSH DOOR**
1st Quality 24x85"x1 1/2"
\$4.44

CAFE DOORS
Complete with 2-way hardware. **\$19.95**

BI-FOLD DOORS
Popular 24" Size Mahogany Flush Door **\$11.50**
White Pine Louvered Door **\$17.50**
all other sizes and styles available

REPEAT OF A SELLOUT "TWODOR"
The Most Beautiful, Strongest, Finest Wood Door Built
YET "TWODOR" COSTS NO MORE THAN THE COMMON TYPE
We believe this is the most handsome combination door made — we know it is the strongest. It will not sag or come apart. Quick change glass and screen panels, lock snug with special rust-proof fasteners from inside of door. FOR ALL STANDARD SIZE DOOR OPENINGS. Reg. 38.88 **\$29.95** Prime Painted

SALEM LUMBER CENTER
DO IT YOURSELF HEADQUARTERS
Home of "Old Fashioned" Service
Mon. thru Thurs. 9 to 7
Fri. 9-9, Sat. 9-6
Open Sunday 10 a.m.-5 p.m.
GA. 2-1000

30650 Plymouth Rd.
2 Blocks W. of Middlebelt

Four Die in Crash, Survivor Fights for Life

The lone survivor of a Sunday morning two-car crash in which four persons died remains in critical condition in St. Mary's Hospital, Livonia.

Township, 30, is the only one of four persons who did not lose his life in the car that was rammed broadside by an 18-year-old Detroit driver, who also died, at the intersection

of Joy and Middlebelt Rds. The location is just inside Nankin on Livonia's southern city limits.

Killed instantly were Redman's wife, Sylvia, 31, Jack

Fleet, 31, and his wife, Marilyn, 28, of Birmingham, all riding in the same car. Death came to Richard Targus, 18, at St. Mary's Hospital, at 2:43 a.m., less than one hour after

the accident. Hospital officials said Monday it was "touch and go" for Redman.

Detective Irvin Steffes of the Wayne County Sheriff's Depart-

ment said Targus was apparently driving east on Joy Rd. and smashed into the other car, being driven north on Middlebelt Rd. by Fleet.

He said he has at least three

witnesses to the accident whose versions he is checking.

David Lynch, 27, of Livonia, told officers that he was driving north on Middlebelt behind the Fleet auto and

thought it had the right of way through the intersection's traffic signal.

Both autos were spun 75 feet from the point of impact into a service station driveway at the northeast corner of the intersection.

Mrs. Fleet taught school in Bloomfield Hills while her husband was a salesman for Aeroquip Corp. of Jackson. They are survived by a four-year-old son, David.

A certified public accountant, Redman has two children, Mark, 3, and Bruce, 5 months. The family resides at 14426 Fenton, Redford Township.

Targus was graduated in June from Cody High School and was employed as a crew manager by Ray Distributing Co. He is survived by his parents and three brothers.

The four deaths were part of the statewide total of 21 fatalities over the weekend.

Choice of 16 Classes Awaits Adults at C'ville Night School

A choice of 16 or more classes awaits adults in the Clarenceville School District next Monday, when

the annual adult education programs gets under way again. Classes will meet from 7:30 to

9:30 p.m. at Clarenceville High School, 20155 Middlebelt, and registration may be taken care of at the Board of Education office any day from 1:30 to 4:30 p.m.

Classes include, on Monday: Drafting I (Mr. Rustemier), Football for Parents (Mr. L. Nutter), Investment (Mr. Halperin), and Typing I (Mr. Young).

On Tuesday will be taught: Beginning Bridge (Mr. Hellstein), Home Construction (Mr. Martynow), Knitting (Mrs. Murphy) and Modern Math for Parents (Mr. Eveleth).

On Wednesday: Beginning Sewing Mrs. Boyd), Bookkeeping (Mr. Saarinen), Lapidary Work (Mr. Nielson).

On Thursday: Driver's Education (Mr. Rustemier), Flower Arrangement (Mrs. Cartee), Leadership Development (Miss McColloch), Practical Auto Mechanics for Women (Mr. Rustemier), Oil Painting (Mrs. Wood).

Any group of 10 or more people who desire a course not listed may contact the Adult Education Director, James Leary, 476-4620, daily after 1:30 p.m. for information.



WILLIAM F. McLAUGHLIN, executive vice chairman Republican State Central Committee has moved into the 19th District. He and his wife and three boys have taken up residence on Reed Road in Northville. In February, McLaughlin was appointed to the full time executive vice chairmanship of the party in Michigan assuming statewide liaison, strategy and campaign responsibilities. He had spent five years with the United Detroit Theatres and nine years with the Cinerama Theatres where he was director of publicity and advertising. He is considered one of the new hopes of the Michigan Republican party which has emerged since Governor George Romney, coming into the limelight from the Young Republican group.

Observer Second Front Page

Wednesday, September 22, 1965 Page 3A

Plymouth Police Out Of License Business

The Plymouth Police Department is out of the business of issuing driver licenses. That was the announcement of Assistant Police Chief Loren Johnson Monday following receipt of a communication from Secretary of State James Hare indicating the department should stop issuing licenses and send

applicants to nearby centers equipped to issue licenses with the snapshots.

The new state code provides that a picture must accompany each license and picture taking equipment has been set up in Livonia, Garden City, Northville and in the Wayne County Road Patrol offices.

Plymouthites making applications for licenses will have to travel to one of the nearby centers — they can't be issued at the Plymouth Police station anymore.

"We have been expecting this communication for several months," said Chief Johnson, "We realize that it will work a hardship on area residents but we just didn't have room for the necessary equipment and asked to be relieved of a job that has become more and more complicated during the past few years."

Johnson indicated that the District Police Chiefs Association had gone on record requesting that all license issuing be turned over to the Secretary of State's office. Detroit will continue to issue licenses until Jan. 1 and then will be out of business.

Auto Kills Ford Road Pedestrian

A 27-year-old Nankin man died Saturday morning from injuries received the night before when he was struck, while walking on Ford Road, by a car driven by a Livonia resident.

Sheriff's deputies said that Edward Dombrowski of 34148 Francis St. was hit by a car shortly before midnight, driven by William Solberg, Jr., of Livonia.

Dombrowski died at 8:30 a.m. at Wayne County General Hospital.

The deputies said the victim was walking west near Karte in the same direction as the car which struck him.

SC to Host Meeting of State Body

Schoolcraft College will host the 31st annual meeting of the Michigan Association of Junior and Community Colleges on Oct. 14 and 15 when administrators and faculty members from approximately 25 community colleges will attend.

Principal speaker will be Robert Theobald, noted British socio-economist, whose recent work has been focused on the implications of cybernetics. He will address the community college educators at a noon luncheon on Oct. 15 at Roma Hall on "Cybernetics and the Community College."

The two-day event will get under way with a meeting of the MAJCC legislative assembly at the Mayflower Hotel in Plymouth at 3 p.m. Oct. 14. It will be attended by the faculty representative and the administrative head of each member institution.

On Friday, Oct. 15, activities on the college campus will begin at 9 a.m. with a combination registration and coffee hour. At 10 a.m., faculty and staff members from the various community colleges will begin a series of departmental meetings to discuss mutual concerns.

Thomas Healy Is Appointed

Thomas J. Healy, Jr., of 249 Blunk St., was appointed city attorney by Mayor James Houk Monday night. He will succeed Edward Draugelis, municipal judge elect.

Draugelis submitted his resignation effective Nov. 30 to the City Commission Monday.

Plymouth Hi Plans Night For Parents

Plymouth High will hold its annual Senior-Parents Night program next Wednesday (Sept. 29) at 8 in the school auditorium.

The purpose is to explore college, junior college, trade school and vocational plans for members of the senior class. The parents (seniors also may attend), will meet in the school auditorium for a preliminary meeting and then break up into five groups, each in charge of a member of the high school counseling staff, for discussions of the various phases of the meeting.

Pamphlets will be available on "Facing Facts," "Career Opportunities for High School Graduates," and "Facing Facts: On College Admissions."

True character is measured by living the kind of life other people think you do.



JUDGE HARRY J. DINGEMAN, JR. was one of the top four nominees for Circuit Judge in the primary election on Sept. 14. Married with four children, Judge Dingeman is a resident of Northwest Detroit. He is being given moral and financial support by one of Plymouth's legal eagles, City Attorney Edward Draugelis (right). At 49 Judge Dingeman has a record of having served faithfully in the Common Pleas Court for more than 18 years—giving county-wide judicial service. Twice during his judicial career he has been responsible for modernizing the body of rules under which the court operates. He was the top choice in a lawyer's poll for candidates for the state's new Appellate Court. He is a graduate of local public schools and U of D High School and College.

Grand Jury Probe Enters 3rd Week

One-man grand jury investigations into the traffic-ticket "fixing" scandal in the Wayne County Sheriff's Department are in their third week as the juror, Wayne Circuit Judge Edward S. Piggins, continues to hear witnesses relate whatever knowledge they may have of the alleged mishandling.

He said this week he did not know how long the probe will last and said it could also expand to unrelated matters.

In a talk to retired Ford Co. executives Saturday night, Piggins urged any citizens to come forth with information of graft, crime, corruption or dishonesty and said, "It is his moral duty as an honorable citizen to bring it to the attention of the grand jury now in session."

Witnesses last week included the 300-pound Sgt. Paul Paciorek, star witness whose suspension has been announced for an additional 60 days, waitress Kathy Webb, 20, and members of the "Big Five"—the deputies whose allegations touched off the grand jury.

Paciorek's attorney, Nankin Justice George R. Perry, claimed last week that Sheriff Peter Buback should have suspended two other deputies as well as Paciorek and Road Patrol Inspector Dan D. Martin.

Perry said accusations have been made by the Big Five against Deputy Inspector Richard Novak and Sgt.

James Haile who succeeded Paciorek. Buback said there had been newspaper statements by both Paciorek and Martin, admitting their roles but there had been none by the other two men.

Clarenceville Teachers Study Economics

Teachers in the Clarenceville School District participated recently in an Economic Education Workshop held for the teaching staff on the opening day of school.

Guests included Dr. Theral Herrick, Frank Johnson, Robert Van Dyke, Dick Leonardelli, Patricia Meyer and Norma Trafelet, who joined school administrators Louis E. Schmidt, superintendent, and Lydia Lear, curriculum coordinator. Principals and assistant principals also attended.

Dynavoice Story On WJBK-TV Show Monday

The story of Dynavoice, Plymouth's newest industry which started as a communitywide venture, will be relayed on Channel 2, WJBK-TV Monday night at 8 p.m.

That was the announcement of President Paul Richards who received word that his recent appearance on the show "I Got a Secret" is scheduled for screening Monday.

Richards appeared on the show several weeks ago while in New York City attending the World's Fair where he demonstrated and exhibited the player piano device.

Conductor of the Plymouth Symphony. He will be assisted by Lee Eitzen. Director of the Osborne High School Choir in Detroit, and Allen Shaffer, a member of the music staff of Schoolcraft College and organist and choirmaster of the First Methodist Church, Garden City. Anyone seeking additional information should call either Dunlap or Shaffer at 591-6400, Extension 317.

During Fire Prevention Week Plymouth Fire Dept. Slates Open House

The Plymouth Township fire department plans a week-long open house celebration of National Fire Prevention Week, Oct. 3 through Oct. 9 according to Capt. Barney Maas.

"We urge all residents of the Township to stop in at either of the stations, inspect the newest equipment and chat with the firemen," invited Capt. Maas.

Station No. 1 is located on Ann Arbor Road east of Lilley Road adjacent to the Township Hall.

Station No. 2 is located on Schoolcraft near Wilcox Road in the Lake Pointe subdivision. The Township firemen will show films and colored slides of recent fires, showing the department in action during the celebration. The presentations will be made on Thursday, Friday

and Saturday, Oct. 7, 8 and 9 at 8 p.m. at Station No. 1.

Stan Besse Honored for Long Service

City Engineer Stanley Besse, who has served the City of Plymouth for more than 30 years, received the coveted Samuel A. Greeley Service Award from the American Public Works Association recently in the national convention in Los Angeles.

Besse was honored for his long years of service to a single community and the presentation was one of the highspots of the conference.

Schoolcraft Makes Plans For Bigger Evening Choir

The Schoolcraft College Evening Choir was organized in the fall of 1964 to create a community-wide choral group capable of performing the large choral master-works. This group, which includes a total of approximately 50 members, presented the Faure Requiem in April and later the Brahms Liebeslieder Waltzes with the Plymouth Symphony.

Arrangements are under way to have the Northville Choral Society join the Schoolcraft College Evening Choir. The Northville Choral Society, directed by Leslie Lee, is an old, established organization with a long tradition of performing Handel's Messiah.

The Schoolcraft College Evening Choir offers a unique opportunity to those people who wish for a more advanced kind of musical experience. To join the Schoolcraft College Evening Choir, an individual must be able to read simple music, must have had some previous choral experience, and must attend the regular rehearsals.

The choir will meet on Wednesday evenings, 7:30-9:30 p.m., in Room F-530 of the Forum Building, on the campus. The first rehearsal will be Oct. 6. Plans for the 1965-66 season include a performance of the Childhood of Christ by Berlioz during the Christmas season and the C Minor Mass by Mozart in the spring.

Although there is no registration fee required, members will be asked to contribute \$4 to cover the cost of the music. Each individual joining the

choir for the first time will be asked to audition to determine the section into which he should be placed. This audition will include the singing of a simple song and the sight-reading of a simple piece of music. These auditions may be completed at the first rehearsal.

Director of the Schoolcraft College Evening Choir will be Wayne Dunlap. Director of Music, Schoolcraft College and



IN APPRECIATION for interest in their community over and above their regular responsibilities the Livonia Lions Club presented two of "Livonia's finest" Lt. Robert Turner and Sgt. George Gilbert with plaques. Both were selected among thousands of police candidates to attend the FBI National Academy in Washington. Lt. Turner graduated from the three months course in '59 and Sgt. Gilbert in '64. (l-r) Lion Peter Ventura, Sgt. Gilbert, Lt. Turner and President Lion Larry Glulck.

BILL BROWN FORD'S

CLEAN SWEEP SALE!

117 NEW 1965 FORDS MUST BE SOLD

"Example" GALAXIE 500 2-DOOR HARDTOP #1469
 ★ Cruisomatic ★ 2 speed wipers ★ White sidewalls, etc.

STICKER PRICE \$2,888⁰⁰ OUR PRICE \$2,278⁰⁰

For the Best Deal in Town
SEE BILL BROWN
 CAR RENTALS AVAILABLE . . . Daily — Weekly — and Monthly

AT
BILL BROWN FORD, INC.
 32222, PLYMOUTH ROAD
 GA 1-7000 LIVONIA, MICHIGAN KE 2-0900



JOHN C. SPENCER has announced his resignation as Assistant Vice President of the Livonia National Bank having accepted the position of cashier in charge of operations of the Birmingham-Bloomfield Bank in Birmingham.

Diabetes Experts to Speak

Dr. Hubert Baker, Executive Director of the Michigan Diabetes Association, will head a program on "The Adult Diabetic" in the Community Room of Livonia Mall Shopping Center, Middlebelt at Seven Mile Road, 8 p.m. Thursday, September 23.

The meeting is designed to provide basic information on the work of the MDA and discuss possible formation of a Livonia-Farmington unit of the association.

Herbert Elges, chairman of the Lay Society of MDA will speak on organizational matters and the movie, "If You Have Diabetes," will be shown.

Following the film, a question and answer period will be conducted with participation by Dr. Herbert W. Rossin, M.D., and nutritionist, Mary Griffin, of St. Mary Hospital, Livonia. There is no admission charge for the program.

Livonia Ford Plant Gets Safety Award

Three Detroit-area facilities are among 15 Ford Division locations that have earned National Safety Council citations for superior on-the-job safety practices.

Announcement of the awards was made by Howard Pyle, National Safety Council president.

Locally, the division's National Parts Depot, 29500 Plymouth Rd., Livonia, earned an Award of Merit, and Certificates of Commendation were granted the Detroit Area Distribution and Packaging Group, located in Ford's Highland Park tractor plant on John R., and the Industrial Engine Department, which has operations at both the Highland Park plant and Ford's Detroit Parts Depot, 12723 Telegraph Road.

Other Safety Council awards were made to 12 Ford parts depots.

"These National Safety Council tributes are the result of cooperation in safety programs by Ford men and women who realize the importance of on-the-job safety," E. B. Rickard, Ford Division parts and service manager, said.

Employees at the National Parts Depot worked 2,266,320 man hours without a disabling injury from July 16, 1963 through Dec. 31, 1964, to earn the Safety Council's second highest honor.

Employees at the Detroit Area Distribution and Packaging Group, and the Industrial Engine Department worked 818,378 and 300,089 man hours respectively, from Jan. 1, 1963 through the end of last year, to earn their citations.

The awards followed evaluation of 1964 injury rates at all Ford Division facilities.

Larry Meehan Is PR Chief At Northland

Lawrence Meehan, Manager Northland Center Division, Shopping Centers, Inc. announced the appointment of Bruce Andrews as Public Relations Manager of Northland Center.

Andrews, a native of Michigan, comes to Northland Center with a background of sales training, sales promotion and advertising. His most recent position was that of Account Supervisor for the Jam Handy organization.

Andrews will be concerned with Public Relations, promotions and advertising for Northland Center.

He resides in Livonia with his wife Jean and two children Mark and Carolyn. He serves as a director on the Board of Management of the Northwestern Branch of the YMCA and is active in local church functions.

Want ads get quick results!

You can make REAL money Playing MAKE MONEY

"MAKE MONEY" WINNERS

***500 WINNERS**

MRS. M. FEDORUK
1229 CADIEUX RD.
GROSSE POINTE, MICH.

MRS. SHARON HAYES
3920 MACKINAW ST.
SAGINAW, MICH.

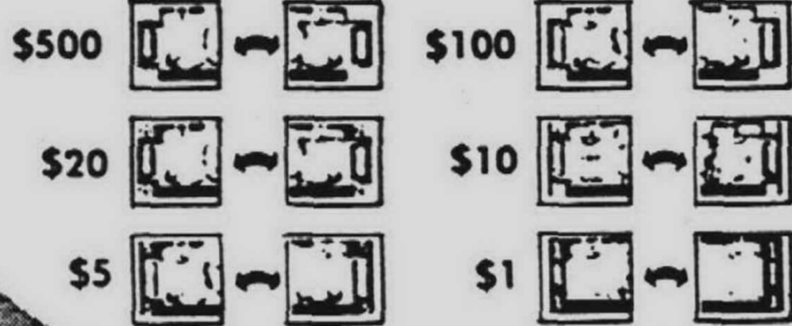
***100 WINNERS**

MRS. ALVINA CASEY,
8085 BUSCH, CENTERLINE, MICH.
MR. GEORGE A. KALAGIAN,
1912 WHITE, LINCOLN PARK, MICH.
MRS. NORMAN WILSON,
26800 TWELVE MILE, SOUTHFIELD, MICH.
MRS. C. O. VILLERS,
18819 HANNA, MELVINDALE, MICH.
MARY LOU SYLVESTER,
20440 SANTA ROSA, DETROIT, MICH.

• WIN! \$500.00
• WIN! \$100.00
• WIN! \$20 **• WIN! \$10**
• WIN! \$5 **• WIN! \$1**
• WIN TOP VALUE STAMPS!

JUST COLLECT THE LEFT AND RIGHT MATCHING HALVES OF ANY OF THESE BILLS

YOU HAVE 6 WAYS TO WIN . . . EACH TIME!



No Purchase Necessary

U.S. GOV'T. GRADED CHOICE TENDERAY
RIB ROAST
79¢ LB.

FROZEN ALL BEEF CHOPPED, SHAPED
FAMILY STEAKS 10 2-OZ. PATTIES \$1
HICKORY SMOKED WHOLE OR HALF
SLAB BACON lb. 59¢



NEW TWIST TIE PLASTIC WRAPPER
MEL-O-SOFT FRESH SLICED
WHITE BREAD
225¢
1-LB. 4-OZ. LOAVES

NEW LOW PRICE
CAMPBELL'S SOUPS
VEGETABLE VARIETIES 13¢
MEAT VARIETIES 16¢
TOMATO 10¢

FROZEN BEEF, CHICKEN, HAM, TURKEY OR SALISBURY STEAK
MORTON DINNERS
11-OZ. PKG. **39¢** SAVE 10¢

U.S. NO. 1
JONATHAN APPLES
4 LB. BAG **39¢**

We reserve the right to limit quantities. Prices and items effective at Kroger in Detroit and Eastern Michigan thru Saturday, September 25, 1965. None sold to dealers. Copyright 1965.

50 TOP VALUE STAMPS WITH THIS COUPON ON ANY PKG. **PORK CHOPS**
Valid thru Saturday, September 25, 1965.

PLUS **50 EXTRA TOP VALUE STAMPS** WITH COUPON BELOW AND PURCHASE OF TWO CUT-UP FRYERS OR TWO PKGS. CHICKEN PARTS

SWIFT'S TENDER GROWN WHOLE
FRESH FRYERS
25¢ LB.



KROGER OR BORDEN'S
COTTAGE CHEESE
1-LB. CTN. **19¢** SAVE UP TO 10¢

- SAVE 6¢
GREEN GIANT PEAS . 5 1-LB. 1-OZ. CANS \$1
SAVE 6¢—GREEN GIANT KITCHEN SLICED
GREEN BEANS 5 1-LB. CANS \$1
SAVE 4¢—GREEN GIANT WHOLE KERNEL
NIBLETS CORN 6 12-OZ. CANS \$1
SAVE 3¢—STAR KIST SOLID WHITE MEAT
ALBACORE TUNA . . . 4 7-OZ. CANS 99¢
COUNTRY CLUB
LUNCHEON MEAT 12-OZ. CAN 39¢
KANDU BRAND
GALLON BLEACH PLASTIC JUG 39¢
HALVES OR SLICED
Del Monte PEACHES . 1-LB. 13-OZ. CAN 25¢
SAVE 10¢—VANILLA, NEAPOLITAN OR VANILLA FUDGE
BORDEN'S ICE MILK . . 1/2 GAL. CTN. 39¢
SAVE 19¢—BORDEN'S ELSIE
TWIN POPS OR FUDGEES . 12 FOR 39¢
PERMANENT TYPE
PRESTONE ANTI-FREEZE \$1.69 GAL

GOLDEN RIPE BANANAS
10¢ LB.
6-SIZE **HONEYDEW MELON** EA. 59¢



50 TOP VALUE STAMPS WITH THIS COUPON ON 2 PKGS. CUT-UP FRYERS, 2 PKGS. FRYER PARTS OR 2 ROASTING CHICKENS
Valid thru Saturday, September 25, 1965.

25 TOP VALUE STAMPS WITH THIS COUPON ON 1-LB. PKG. **ECKRICH SMOOKES**
Valid thru Saturday, September 25, 1965.

50 TOP VALUE STAMPS WITH THIS COUPON ON 1-LB. 6 1/2-OZ. CHOCOLATE DEVILS FOOD OR 1-LB. 5 1/2-OZ. TOASTED COCONUT **COUNTRY OVEN LAYER CAKE**
Valid thru Saturday, September 25, 1965.

25 TOP VALUE STAMPS WITH THIS COUPON ON ANY 4 PKGS.—ASSORTED VARIETIES **KROGER PUDDINGS**
Valid thru Saturday, September 25, 1965.

VALUABLE COUPON
SAVE 26¢ WITH THIS COUPON & \$5 PURCHASE
KROGER VAC PAC COFFEE
1-LB. CAN **49¢**
Valid at Kroger thru Saturday, Sept. 25, 1965. Limit one coupon per family.

VALUABLE COUPON
WITH THIS COUPON & \$5 PURCHASE—SPECIAL LABEL
Pillsbury FLOUR
1-LB. BAG **539¢** SAVE UP TO 14¢
Valid at Kroger thru Saturday, Sept. 25, 1965. Limit one coupon per family.

VALUABLE COUPON
WITH THIS COUPON & \$5 PURCHASE
REGULAR or SUPER MODESS
48-CT. BOX **99¢** SAVE 20¢
Valid at Kroger thru Saturday, Sept. 25, 1965. Limit one coupon per family.

25 TOP VALUE STAMPS WITH THIS COUPON ON 1-LB. PKG. **DEL MONICO ELBOW MACARONI**
Valid thru Saturday, September 25, 1965.

50 TOP VALUE STAMPS WITH THIS COUPON ON ANY 2 PKGS. **COUNTRY OVEN COOKIES**
Valid thru Saturday, September 25, 1965.

Jaycee Auxiliary Sponsors 'Skyscraper' for Benefit

DANCING BY
Pat and Jim Long

"Lessons in the Home"
Cha-Cha, Swing, Etc.
"Fun With the Fads"

425-5220

Tickets are still available for the Metropolitan Jaycee Auxiliary's benefit performance of "Skyscraper" at the Fisher Theater Sept. 29. The performance is part of the pre-Broadway run of the new musical scheduled to open in New York the first of October.

Julie Harris starts in this adaptation of Elmer Rice's

"Dream Girl." It is her first musical role. Sammy Kahn and Jimmy Van Heusen have written the music. Jayceettes from throughout the area are cooperating in the benefit for the Michigan Association for Emotionally Disturbed Children.

The Metropolitan Jaycee Auxiliary is a group of 33 Jaycee Auxiliaries who have united to sponsor the second annual Fisher Theater benefit.

Proceeds from the event will go to the placement fund of the MAEDC. The placement fund provides specialized treatment at private facilities for disturbed children. The

cost of this treatment and living away from home is very expensive and impossible for some families.

This is the third year the Michigan Jaycee Auxiliary has helped MAEDC as a state service project. Last year the Jayceettes financed the treatment for three disturbed children. Besides fund raising activities for the placement fund many auxiliaries work directly with child guidance clinics and hospitals in their area.

Local Auxiliary members on the Central committee are: Farmington: Mrs. Donald Kobman; Mrs. Ralph Parnin; Mrs. Richard Tupper; and

Mrs. Norv Kennedy, Redford Township; Mrs. Herbert Cole.

While the Garden City, Plymouth and Nankin Township organizations do not have mem-

bers on the Central committee they are participating in the event.

Ticket information may be obtained from any local Jaycee Auxiliary member.

Want ads get quick results!

Mothers:

- YOUR CHILD'S PRECIOUS FEET ARE YOUR RESPONSIBILITY
- THERE IS NO SUBSTITUTE FOR QUALITY AND CAREFULLY FITTED SHOES
- DOCTORS SHOE PRESCRIPTIONS CORRECTLY FILLED

GABE SHOES

KENDALLWOOD CENTER FARMINGTON ROAD AT 12 MILE ROAD GR 6-3401

DR. MAXWELL MALTZ, M.D., F.I.C.S.

Author of the Best Seller PSYCHO-CYBERNETICS

Will Conduct 3-Course
"CYBERNETICS, SUCCESS and HAPPINESS"

at Bentley High School, Livonia
Hubbard at 5 Mile
COMPLETE FEE \$30

Tickets Available at the Door
or From Unity of West Suburbia
30025 CURTIS ROAD, LIVONIA 48152
Phone 421-1760 or 644-2937



MR. AND MRS. JERRY CLIFTON GIBBONS

Carol Lee Rothrock Is August Bride

Marriage vows were exchanged between Carol Lee Rothrock, daughter of Mr. and Mrs. J. Walter Rothrock, Fox, Redford Township and Jerry Clifton Gibbons, son of Mr. and Mrs. John C. Gibbons of Grandville, in Detroit.

Rev. William Whitley officiated at the Aug. 7 ceremony in St. Paul's Presbyterian Church in Livonia.

The gown chosen by the bride was designed by her and made by her grandmother of silk organza over taffeta. Her full skirt featured a train of seven tiers of organza edged in Venice lace. The elbow length sleeves were sheer. She carried a bouquet of white roses and stephanotis in a crescent design.

Camilla Aulerich, Ann Lynn Rockwell and Vonnie Evans were attendants gowned in sleeveless sheaths of yellow nylon dotted swiss over taffeta. They carried white mums and yellow daisies in baskets. They also wore picture hats.

William Evans served as best

man with Richard Fetner, Richard Aulerich, James Evans seating the guests.

A reception was held at the church for 150 guests. Following the reception the newlyweds left for a week at Honey Harbour. They have taken up residence in Redford Township.

The bride is a graduate of RU High School and Michigan State, and now teaches at Redford Union.

Her groom is a graduate from Redford High and is presently a student at Henry Ford College.

Holda-Krause Marriage Rites Held Aug. 27

Janice Alynne Holda of Redford Township became the bride of David John Krause of Plymouth on Aug. 27 at the First Church of the Nazarene in Detroit.

The bride is the daughter of Mr. and Mrs. Walter W. Holda of Redford Township, while the mother of the bridegroom is Mrs. Aileen Krause of Detroit.

For her marriage the new Mrs. Krause wore a silk organza gown with an all lace chapel train. She carried phalaenopsis orchids, sweetheart roses with an ivy cascade.

Joyce Ann Holda was her sister's maid of honor. Diane Gustofson and Arlene Blight were the bridesmaids. They carried pink sweetheart roses and blue delphiniums and wore different shades of blue gowns.

Warren Carlson served as best man, while Brian Kranz, David Butler, James Anderson and Bill Holda seated the guests.

The bride is a graduate of the University of Michigan, while her husband graduated from the Lawrence Institute of Technology.

The newlyweds will reside in Plymouth.

Kennedy-Kull Ceremony Sept. 3

Karen Elizabeth Kennedy and Allan A. Kull exchanged marriage vows Sept. 3 at the Methodist Children's Village Chapel. The Rev. Jon M. Clapp of Lola Valley Methodist Church officiated at the double ring candle-light ceremony.

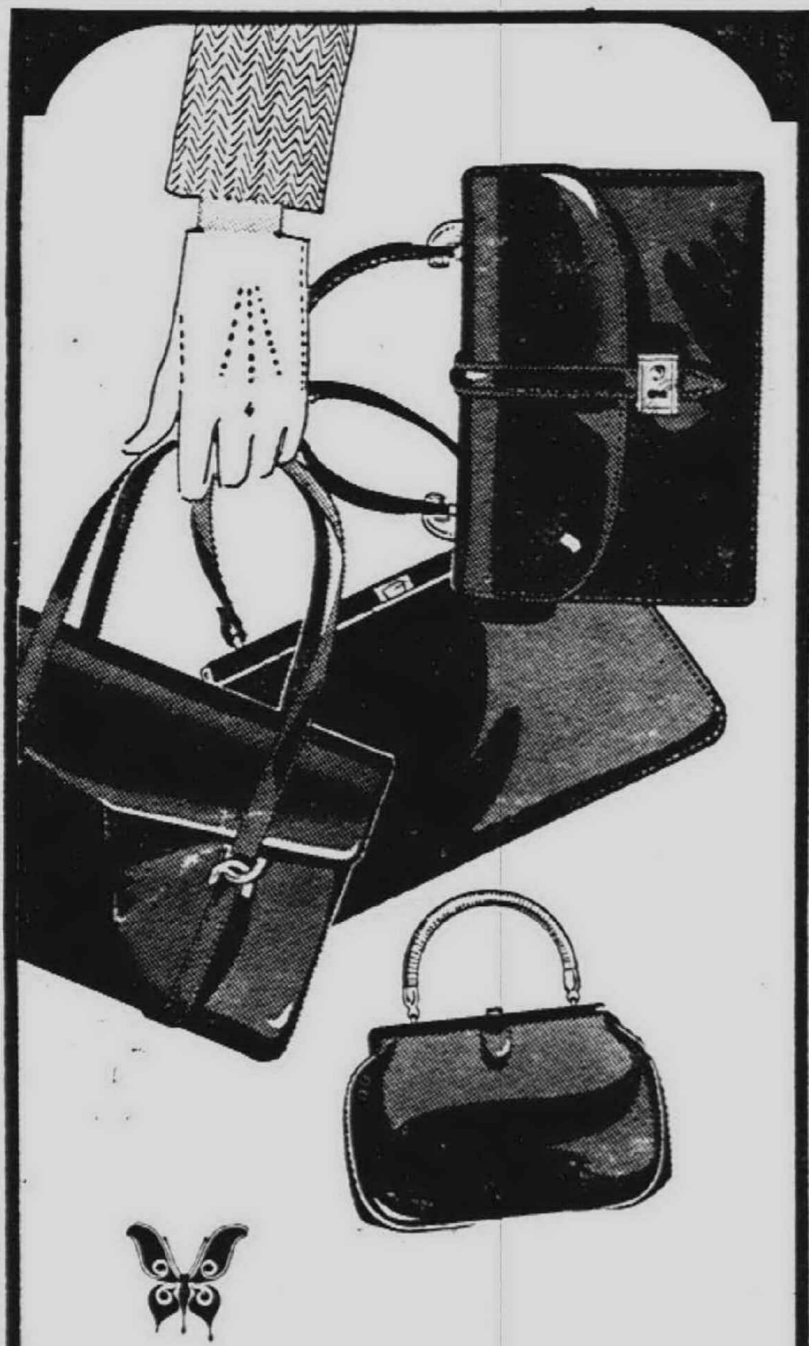
The bride is the daughter of Mr. and Mrs. Donald Kennedy of Redford Township, while the bridegroom's parents are Mr. and Mrs. Joseph Kull of Detroit.

For her marriage, the new Mrs. Kull wore a lace street length gown and carried a bouquet of white carnations and ivy.

Joyce Geiger was maid of honor and wore a blue lace street length dress. She carried blue and white carnations.

Thomas Morin was best man, while David Beyreis and Joseph Kray seated the guests.

Following a reception for 100 guests at the Sno-White, the couple left for a one-week honeymoon in northern Michigan.



LATCH ON TO A FINE LEATHER DESIGNER HANDBAG FOR JUST

18.99 comparable value 26.00

We've a wonderful grab-bag collection of famous maker designer handbags—envelopes, satchets, vagabonds and classic tailored pouches—some of them luxurious leather-lined calf made especially for us in France, many one-of-a-kind! All, the last word in fashion and value to latch on to in black, brown or navy. Handbags. No mail or phone orders, please.

FRANKLIN SIMON

WESTLAND CENTER 425-8700 WAYNE at WARREN ROADS OPEN MONDAY, THURSDAY, FRIDAY, SATURDAY 'TIL 9

Back Talk

... is the feminine look—short soft curls with a casual fling. Starts with scissor-shaping by our experts... add beauty and body with our famous permanent

Reg. \$15 Treasure Custom PERMANENT WAVE including haircut **7.45**

Reg. \$20 Treasure Deluxe PERMANENT WAVE including haircut **9.45**

stylist prices slightly higher
Use Your Ward Charge

MONTGOMERY WARD
WONDERLAND CENTER
Plymouth at Middlebelt GA 7-1600 2nd Floor

For Normal Hair Only

Fall Showing

Latest Designs in FURNITURE UNITS
Wall-Free Standing
You will be intrigued with
★ New London Interiors
★ Gordon Bros. Grouping
★ New Valmod Unit
★ New Brackets & Shelves

Saturday, Sept. 25
Sunday, Sept. 26
Noon to 6 p.m.

Wall Furniture for every room and purpose. See them all at the one and only

Shelf Shop

BIRMINGHAM
nr. 15 Mile Rd.
647-5580

WONDERLAND STORE ONLY!
GA 7-1600

4 BIG DAYS... ENDS SATURDAY!

Fall Fashion SALE

TERRIFIC SAVINGS—RIGHT WHEN YOU APPRECIATE THEM MOST! BUY ALL YOUR FASHION NEEDS AND SAVE!

JUST SAY "CHARGE IT!"

the total look!

FASHION'S NEWEST RAGE!
PRICED AT BIG SAVINGS!

\$5

Adorable Shetland sweater with stockings to match and mini-skirt! Up-to-the-minute fashion at a big savings! 100% wool skirt has bonded lining. Stripes, plaids and solid colors.

Charge It

new look!

JUNIOR AND PETITE COTTONS IN JUMPER STYLES AND BLOUSE-DRESSES

2 for \$9

Reg. 5.99

Everything new in junior fashions at Wards! Choose from selected groups in dark solids, prints. Easy-care cottons, blended Avril and Cotton or Rayon and Cotton. Junior and Petite sizes.

Charge It

sale-priced!

FASHION RIGHT, TAILOR-PERFECT SKIRTS SPECIALLY PRICED NOW!

\$3 & \$4

Reg. 3.99 - 4.99 5.99 Reg.

A-line and big zipper styles in easy-care cotton. Junior and misses sizes in dark plaids, solid colors and Madras. Unbeatable values... every one!

save!

ALL NYLON PARKA IN RICH NEW COLORS FOR FALL!

2.88

NEVER NEEDS IRONING

Completely washable, special twist nylon jacket that is perfect for all winter activities. Detachable hood folds into its own front pocket. Newest fashion colors.

Charge It

you save \$2.11

SMART S-T-R-E-T-C-H PANTS TAGGED AT BIG, BIG SAVINGS!

5.88

Reg. 7.99

Perfect blend of nylon-rayon assures trim, slim look and comfort-plus! Perma-stitched crease eliminates need of ironing. Large selection of new fall colors. Sizes 5 to 15.

Charge It

big buys!

SELECTED GROUP! FAMOUS-MAKER BLOUSES... SAVE!

2.88

Values to \$10! Assorted solid colors and stripes in either long or short sleeve styles... Wash 'n wear cotton and dacron blends... All tailored to perfection! Sizes 32-38.

Charge It

sweater special

CARDIGAN OR SLIPOVER

3.88

Fall's newest colors in wash 'n wear Orlon and wool blends. Large selection of novelty bulky styles. Sizes 34 to 42. Exceptional value!

cotton t-shirts

Fine quality cotton knits

2.66

Fill your sports wardrobe now! Colorful solids, stripes, plaids. V-neck or button-up styles. S-M-L. Terrific buys!

WARDS • Wonderland • Plymouth at Middlebelt

DPW News And Notes

**By SUPT. JOSEPH BIDA
Plymouth Dept. Public Works**

With our summer help returning to schools and colleges, the Department of Public Works now has a total of 16 employees. The list includes: a secretary, one foreman, two men in the water meter department, one operating at the well fields, two at the cemetery and one in the garage on equipment maintenance work.

This leaves a total of nine, including the superintendent, to handle all of the other work including parks, playgrounds, water and sewer taps, street work and the other miscellaneous chores.

The department has temporarily taken over the operation of the city's refuse dump in Salem Township until a new contractor is found. The contractor, who had handled the work for the past two years, resigned recently due to health reasons.

DPW workers were busy last week cleaning up Kellogg Park, opening Penniman Ave. from S. Main to Union, removing banners and getting everything in the central downtown business section back to normal after the four-day Fall Festival.

The business section was swept, two funerals were held at Riverside Cemetery and workers continued the mowing and cleaning there. A fire hydrant, damaged by an accident on Penniman, was replaced.

A basement at the corner of Hartsough and Fairground in the Symar Subdivision, that had been left open by the developer for several months, was filled as a safety measure. Then the contractor moved in with his equipment and finished filling all of the open basements. He had planned on using the basements for homes but FHA approval was slow in coming and he had to go ahead with the fill-ins in accordance with an order from the city.

Several traffic signs were replaced and others repaired. Voting machines were moved into the precincts on Monday and removed Tuesday after the election.

The property purchased by Bathey Manufacturing on S. Mill as part of the Urban Renewal project, was leveled as

Madonna Gets \$5,000 Grant

"Mrs. Frances S. Willson of 10001 Genesee Bank Building, Flint, has donated \$5000 to Madonna College," announced Sister M. Danatha, President of Madonna.

The contribution represents a share of the seventh annual grant to the Michigan Colleges Foundation by Mrs. Willson. The grant for 1965 is \$61,000; the total of Mrs. Willson's contributions to the Michigan Colleges Foundation is now \$236,000.

"Mrs. Willson is one of the voluntary supporters of privately controlled colleges who has come to realize that systematic voluntary giving and private enterprise go hand in hand; that funding the freedom of our independent colleges is not a charity, but a wise business investment," Sister Danatha said.

Mrs. Gemperline Head of DAR Program To Give State Park Pines

Mrs. Walter Gemperline, of Plymouth, state conservation chairman of the Daughter of the American Revolution and conservation chairman of the Sarah Ann Cochrane in Plymouth, was in charge of a program last week when the State DAR dedicated 33 acres of Memorial Pines to the Huron National Forest near Glennie.

The dedication was part of a program that started in 1948 when the DAR donated an original 100 acres to the project. Since then the organization has been responsible for the planting of 600 acres of tiny red pines in the Huron-Manistee Forest near Cadillac.

Participating in the latest dedication with Mrs. Gemperline were: State Chaplain Mrs. Willard Wilson, State Regent, Mrs. James Zeder and Forest Supervisor John Von Bargen. The newest donation cost the DAR more than \$8,500.

Schoolcraft Reports 2540 Attend Classes

According to Norman Dunn, Registrar of Schoolcraft College, a total of 2,540 students enrolled at the college for the first semester, which began Aug. 31. This figure represents an increase of approximately 600 over the enrollment for the corresponding period last year.

There are 1,620 students attending day classes which begin at 7 a.m. and continue to 6 p.m. daily. Of these, 1,391 are classified as full-time.

There are 913 enrolled in the evening program. Classes in this program are scheduled four nights a week, between the hours of 6:30 and 10:30 p.m.

New 'Great Books' Series to Start for Suburbanites

The fall reading season for suburbanites will get underway with a Great Books discussion series for residents of all six communities in The Observer's circulation area.

"Great Books," according to Mrs. Velma Kastner, the local coordinator, "is the name for a course of adult education study that brings 'liberal arts' training or 'training of the intellect' within the grasp of every adult American regardless of prior educational training. It's based on the sound truth that the mind like the body, to be healthy, must continually be nourished and challenged."

The course is made up of adult discussion groups which meet every two weeks to discuss assigned reading excerpts from the writings of living and dead great authors. Assignment lengths vary from 20 to 200 pages.

First classes start the week of Sept. 27 and are open to residents of Livonia, Garden City, Nankin Township, Redford Township, Plymouth and Farmington.

On Monday nights, starting Sept. 27, the groups will meet from 8 p.m. to 10 p.m. at Whitman Junior High School library, 32306 W. Chicago, Livonia.

The Thursday night group starts meeting Sept. 30 at Carl Sandburg Library, 30100 Seven Mile Rd., Livonia.

Registrations may be made at the meetings or by calling Mrs. Kastner, GA 1-2619.

"Intellectual growth thrives in the reader," Mrs. Kastner says, "as he exposes his mind

to the lofty thoughts, the subtle explanations, the mental exercises and beautiful prose that have endured down through ages. And the great writers speak with sound authority and sparkling intellect on such pressing personal problems as sex, child rearing, education, politics and the 'why' of human existence . . . the basic issues that have and always will confront man-kind of any time or place."

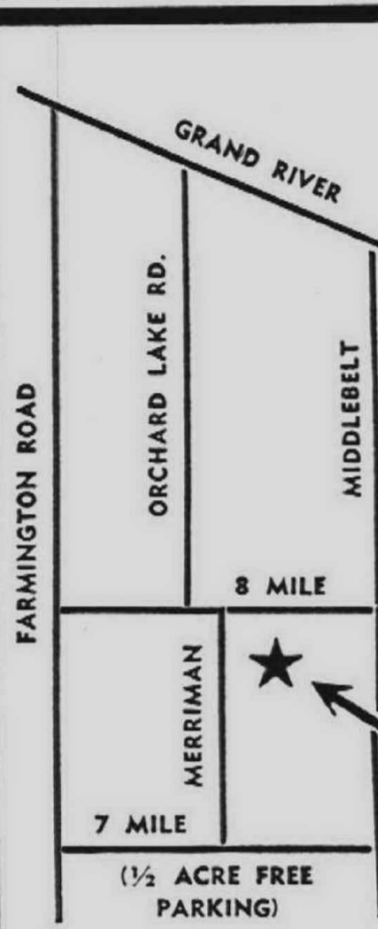
WON'T BALANCE

Almost anyone can keep an expense account today, but it takes a real genius to make it tally with the cash.

Electrical Graduate
Paul Roderick, 34030 N. Hampshire, Livonia, has completed a course in electrical low voltage power system coordination.

Testing Countdown
The Wayne State University Counseling and Testing Bureau administered a total of 54,787 tests to 16,687 persons during the 1964-1965 academic year.

COME TO THE SALVATION ARMY
290 Fairground St., Plymouth
ON RALLY DAY AND HOME COMING
Sunday, September 26th
HEAR COLONEL MARLON M. COHN
Eastern Mich. Commander The Salvation Army
10 a.m. Sunday School — 11 a.m. Morning Service



PHONES
476-6240
537-2645



American
HARDWARE & SUPPLY CO.
8 Mile and Merriman Roads, Livonia

Anniversary Sale

Wed., Thurs., Fri., Sat.
8 to 9 p.m.
Sunday 10 to 6 p.m.
LUMBER DEPARTMENT
Daily 8-6—Sunday 10-6
SALE HOURS ONLY

STARTS TODAY THRU SUNDAY

HOUSEHOLD DEPARTMENT

NEVER NEEDS SCOURING!
West Bend **10" TEFLON* PAN**

\$1.69

CONTACT
Shelf Lining Paper
Regular 49c
38c / yd

Singing TEA KETTLE
West Bend
• 2 1/2 qt. Capacity
• Quick-heating
• Copper Bottom
\$2.88

Stainless Steel **FLINT 2-QUART SAUCE PAN**
Regular \$8.25
\$3.88

HOUSEHOLD BROOM
Reg. 1.49
98c

FIREPLACE DEPARTMENT

CUSTOM BUILT SCREENS
★ ALL SHAPES ★ ALL SIZES

FREE! Colorful **LOG TOTER**
With purchase of any Fireplace Screen or Fireplace Screen Ensemble.
Reg. 4.50 Value

Authentic American FRANKLIN STOVE
SPECIAL PRICE FROM **\$49.00**

CUSTOM-MADE FIREPLACE SCREENS
Made to order for your fireplace, for all fireplaces, including multi-sided. Custom built in our store by factory trained experts.
PRICED FROM **\$19.88**

LOG BASKET
Black with Brass Legs
Regular 4.95
\$3.88

SOLID BRASS
REG. 11.95
\$5.88

FIREPLACE WOOD, SLAB 1/8 CORD — \$1.88

HARDWARE DEPARTMENT

FREE
• Large Metal Paint Pan
• Lamb's Wool Roller
• 9x12 Plastic Drop Cloth
• Large Quality Brush
2.34 worth of quality tools with purchase
Gallon of MAC-O-LAC QUALITY PAINT

BURGESS
Size "D" Flashlight
BATTERIES
Regular 20c
Limit 4 **4c**

Black & Decker NEW
11-130 UTILITY POWER SAW
7 1/4" Saw for the price of a 6 1/2" ...
Rip Guide Included
Sale Price **\$29.88**

20 Gallon GARBAGE CAN
Regular \$3.29
\$1.64 (Limit 2)

8-FT. K GUTTER 77c
Complete Line of Solderless Fittings

ROOTO'S CHROME CLEANER
12-oz. Can
Reg. 59c
9c

LUMBER DEPARTMENT

Save on Your Fuel Bill . . . Easy to Spread
ZONOLITE
ECONOFILL Regular 1.49
All-mineral, fireproof, rotproof, vermin-proof! Insulate now for year 'round comfort. And you save more at American!
\$1.04

STEEL GRATES
24" Reg. \$5.95
\$3.49

1x12 Shelving 11 1/2c ft.

INSULATION
1 1/2" FOIL ONE SIDE
Covers 100 sq. ft.
\$3.28

RAILROAD TIES
8"x6"x8"
\$1.49
Cash and Carry

Select Economy 2x4's
7-ft. **41c**
8-ft. **51c**

RUBBER TIRE DOOR MATS Reg. \$1.19 **74c**

FREE 6-PACK CANADA DRY
16-Oz. Bottles with \$5.00 Purchase

TOY DEPARTMENT
50% OFF LIST PRICE ON ALL TOYS
On Our Second Floor During Anniversary Sale Only "NO DEALERS" Cash and Carry

NO DEALERS
ONE LOOK IS WORTH A 1,000 WORDS AT "AMERICAN" SEE FOR YOURSELF

AUTHORIZED EDISON AGENCY
★ LIGHT BULB EXCHANGE
★ APPLIANCE REPAIR
★ PAY BILLS HERE
★ MONEY ORDERS
★ MAILING SERVICE
Use Your Security Charge
PIPE CUT TO ORDER
• Many Other Services . . . Check with us!

REDDY KILOWATT
AN EDISON SERVICE AGENT
DEALER



RUTH THOMPSON WITH "THE BEAR"

WORD PORTRAIT OF AN ARTIST

Sculptress' Work at Mai Kai Exhibit

By BETTY BALDWIN

Ruth Thompson of 26757 Lyndon, Redford Township, expresses her talent as a sculptress of wood, clay and in several related fields.

How she first became interested in sculpture involves a problem encountered in making a marionette for a small boy.

"It was easy to make a face out of papier mache, but the hands and feet were another matter," she recalls. In solving the problem Mrs. Thompson decided to make the hands and feet out of wood. The result was so satisfactory that she decided to carve animals from blocks of wood.

One of the most charming works in her studio behind her home is a bear chisled out of a large tree stump. The work had an irresistible attraction for this writer and it seemed impossible to keep from stroking the smooth, silky, soft wood of "The Bear" creation.

Following her first attempts at carving small animals from wood Mrs. Thompson enrolled at the Society of Arts and Crafts. She studied there for almost three years with Walter Midener.

A native of Central Illinois, Mrs. Thompson was raised in Decatur, Illinois. During World War II she served in the Waves for three years as photographic specialist.

The Thompsons moved to the area in 1951. She and her husband, William, have one son, Bill who is currently in the U.S. Air Force.

Her other interests include oil painting, sewing, gardening and she designates her "real recreation and joy as fishing."

Ruth Thompson will exhibit four of her works "The Bear," "Stella," "The Swan" and "Scornerd," from the hours of 1 p.m. to 4 p.m. at the Mai Kai Theatre at Farmington and Plymouth Roads in Livonia. She will also be present to answer questions about her work.

Forty-one artists will exhibit at the "Fall Festival of Art" on Sept. 29 at the Mai Kai. The works will be in oils and water colors in addition to sculpture. The public is invited to this afternoon tea and exhibit.

FIRST A SON

Dr. and Mrs. Henry R. Mote, Jr., 26042 Elsinore, Redford Township, announce the birth of their first child, a son Jeffrey William born Sept. 16 in Providence Hospital. The young man weighed in at eight pounds, one ounce.

Public Invited to Tea and Art Show at "Mai Kai"

"Local artists are most fortunate in having a theatre manager interested in fine art such as Bud Leamon, manager of the "Mai-Kai" theatre, Farmington Road at Plymouth Road. Leamon is inviting the public to a tea at the theatre Sept. 29 from one to four o'clock to view the work of 42 artists.

Jon Lockard, of Ann Arbor, who is a well-known portraitist will produce a special work just for this showing. It will not be seen anywhere until the theatre presentation. Lockard is sponsored by Senator and Mrs. Javitz and will be seen in New York City this fall in a one man show.

The "Fall Festival of Art," at the "Mai-Kai," will also feature a local sculptress, Mrs. Ruth Thompson. She will show work in wood and clay, all exquisitely done and pleasing to the eye.

Oil paintings, water colors and collage will be seen in the show. Artists participating come from Livonia, Farmington, Plymouth, Wayne, Detroit, Orchard Lake, Lincoln Park, Allen Park, and Dearborn.

The participating artists are: James Ashcroft, Gay Badenoch, Marie Bodmon, Barry Brent, Barbara Busch, Jeanne Cor-

metet, Bessie Cutshall, Joel Durand, Ruth Ewald, Rose Marie Foce, Opal Fuston, Geyer, Jo Griffing, Ovide Harrington, Susan Hinds, Katherine Holmes, Joyce Johns, Harry

Laaft, Ruth Larkin, Dorothy Laako, Kay Leman, Betty Mal-low, Mary Lee Mather, Maureen McGregor, Hazel McParland, Nora Mendoza, Eleanor Miller, Mabel Petersen, Cecil Reading, Mildred Schaefer, Delphine Scherer, Marie Tuthill, June Weidel, Ed Weidel, John Willetts, Irene Wood, Doe Wood, Kenneth, Vickery, Ruth Thomp-son and Jon Lockard. The show is planned and directed by Betty Baldwin, manager of "The Artist's Show Place Agency."

Visiting Nurses Services Available In Farmington

Sylvia R. Peabody has been named Executive Director of the Visiting Nurse Association which has extended its services to the Farmington Area.

The services are available to the Farmington area residents ill at home regardless of their ability to pay for the service.

For further information or to request this service call the local office in Royal Oak 542-5547.

WE CATER TO THE HOBBYIST

SPECIALS THRU SEPT. 28th

MIXED PLATYS	19c
ANGELS	29c
YUCATAN MOLLIES	39c

AQUARIUMS

Stainless Steel — Slate Bottoms

10 gal.	\$4.99	20 gal.	\$10.75
15 gal.	\$7.75	29 gal.	\$18.75

MARION'S AQUARIUM & PET SHOP

25742 Grand River at Beech KE 7-7720

OPEN 11-7 Daily Sunday 12-4

See You There!

St. Elizabeth's Church, 26431 W. Chicago, Redford Township will hold a rummage and bake sale on Saturday, Oct. 2 from 9 a.m. to 1 p.m. Area residents invited.

Farmington-Livonia Chapter of Marygrove Alumnae Association will hold its first meeting Thursday, Sept. 23 at 8:15 p.m. Msgr. Clement Kern, Pastor of Holy Trinity Church, noted for his activity in the field of human relations, will be guest speaker. Reservations can be made with hostess, Mrs. James Mies, at whose home the Corktown priest will speak. Her address is 9612 Berwick, Livonia, GA 2-0944.

Farmington Women's Republican organization will meet Monday, Sept. 27 at 12:30 at the home of Mrs. Stanley Thorpe, 34690 Thornbrook. "What's Going On With Michigan Republicans?" will be the topic in the meeting and there will be reports on the GOP Mackinac Island Conference and the Women's Federation State Convention in Lansing. All ladies who are interested are welcome to attend.

The Women's Civic Club of Farmington is holding its second annual Hat Show at the First Farmington Savings and Loan Company, corner of Grand River and Orchard Lake Road. These beautiful fall hats will be sold for \$3.98 plus tax. Admission will be 35 cents, payable at the door, and there will be refreshments and door prizes. Thursday, Sept. 30, from 8 p.m. to 11 p.m. is the time and date.

The September meeting of the Westgate Women's Association will be held at the home of Ginny McGuire, 30150 Westgate, at 8:30 p.m. Monday, Sept. 27th. Election of officers will be the first order of business, and meetings and activities for the entire '65-'66 season will be planned.

Mothers of freshmen and new students to Rosary High School are invited to an afternoon tea on Sunday, Sept. 26, at the school. The principal, Sister Marie Henry, and the faculty members will be present to welcome them. Also in attendance will be the officers and board members of Rosary High School Mothers' Club. This will be the initial social event of the 1965-66 school year.

Garden City Garden Club will begin their monthly meetings Monday, Sept. 27 at 8 p.m. at the Log Cabin in the park, Cherry Hill and Merriman Roads. Members are to bring horticulture and mum specimens to the meetings. Hostess for the evening is Mrs. Max Phillips. Flower enthusiasts welcome.

Cootiette Club No. 121 present their annual card party Sept. 30 at 8 p.m. Donation one dollar at the door. Door prizes and table prizes. Refreshments served. The monies brought in by this organization go towards entertainment parties for the Veterans in the hospital. For more information call KE 1-3918 Mrs. Mary Koknar or Mrs. Pearl Lynch at GR 4-4474. Card party to be held at Don Sherman Hubert VFW Post 345 located at 25245 W. 7 Mile Road.

Fashions for Fairway Farms Ass'n.

Women of Fairway Farms Plymouth, Civic Ass'n. in Livonia will Dinner, door prizes and favors model clothes from Juliet Sub-urban Shop of Farmington at a fee of \$4 each. Tickets are available from Frieda Hopkins, 421-7 p.m. at Lofy's Restaurant in 1242, or Delores Hobbs, 421-9023.

SPECIAL NOTICE!

Did You Know?

Farmington Office & Paper Supply Co. is the largest and most completely stocked store in this area for all artists' needs?



Come in and see! Your new one-stop shop. Special prices for Art Classes and Artists.

FARMINGTON OFFICE & PAPER SUPPLY CO.

33419 Grand River at Farmington Road

476-8111



by Les Wilson

FLASH! FLASH! FLASH! FLASH!

Did you ever wish you could take flash pictures with your camera without stopping every time to change bulbs? Your wishes have been granted in the brand new flashcube model KODAK INSTAMATIC Cameras.

This completely new line of cameras lets you shoot four flash pictures in a row without changing bulbs! These cameras make use of a new flash bulb unit that pops onto the top of the camera. After each shot the flashcube rotates, automatically or as film is advanced, to put a fresh bulb into position.

Think what this can mean to you fathers who've despaired of catching some of those off-guard expressions on your children's faces when they're playing inside the house! Think how much more fun your camera can now be at parties!

We've got a complete array of six KODAK INSTAMATIC Cameras with flashcubes for you to choose from. Plus two new Kodak 35mm cameras that also use the flashcube. Prices? From only \$17.95 for a complete outfit.

We even have a new name for this latest idea in picture-taking: Flashcube Photography. We'd love to have you drop in so we can run through the whole story for you. Soon?

CUSTOM PHOTO FINISHING
BLACK & WHITE & COLOR
BEST QUALITY & FASTEST SERVICE
ALL APPROVED CREDIT CARDS WELCOME

"Plymouth's Exclusive Camera Shop Since 1945"

RESPECTED FOR QUALITY AND SERVICE

THE PHOTOGRAPHIC CENTER
An Approved Camera Shop
GL 3-5410

882 W. Ann Arbor Trail, Plymouth

OPEN EVENINGS TILL 9 P.M.



go young with our

\$2 "GO GO" CUTS

You'll see these care-free little hairdos everywhere... atop the fastest frug-ers and wildest watusi-ers! Shaped and tapered by our Sciz-Whizzes for non-stop flattery to take you round the clock in swinging style!

The SHAMPOO, CUT and SET, just \$4.50

We feature CLAIREOL® color; RESTOR® conditioning; REVLON® manicures.
Call or hurry in... appointments not always necessary.

CROWLEY'S LIVONIA MALL

7 Mile and Middlebelt, Phone 476-6300, lines 35, 26

YOU'LL BE GLAD YOU SHOPPED AT CROWLEY'S LIVONIA MALL

BECAUSE

we won't be satisfied with your purchase until you are!

We call it the "Benchwarmer"... 'gals will call it a great little sport coat!

Off to stadium, school or just gadding-about, our "Benchwarmer" looks lively — warms you thoroughly. Dark plaid wool lines the coat and hood in new, popular burgundy. White seam-stitching sets off the slant pockets to either side of the big industrial zipper. Sizes small, medium, large in Coats, Street Level. \$20



CROWLEY'S LIVONIA MALL

7 Mile and Middlebelt, Phone 476-6300
Open Thursday, Friday and Saturday until 9 p.m.



DISPLAYING TWO OF the door prizes for the upcoming card party at fashion show are two members of the Madonna College Alumnae Association...



NEW SYMPHONY LEAGUE Board members. Other members are Mrs. Leslie, Mrs. Marvin Sackett, president; Mrs. Mrs. Gallagher, Mrs. Cass Kershaw, Mrs. Herbert Burley, secretary; Mrs. William Moon, Robert Vorech and Mrs. F. Wells Smith.

St. Hilary's Ladies Set Fashion Show

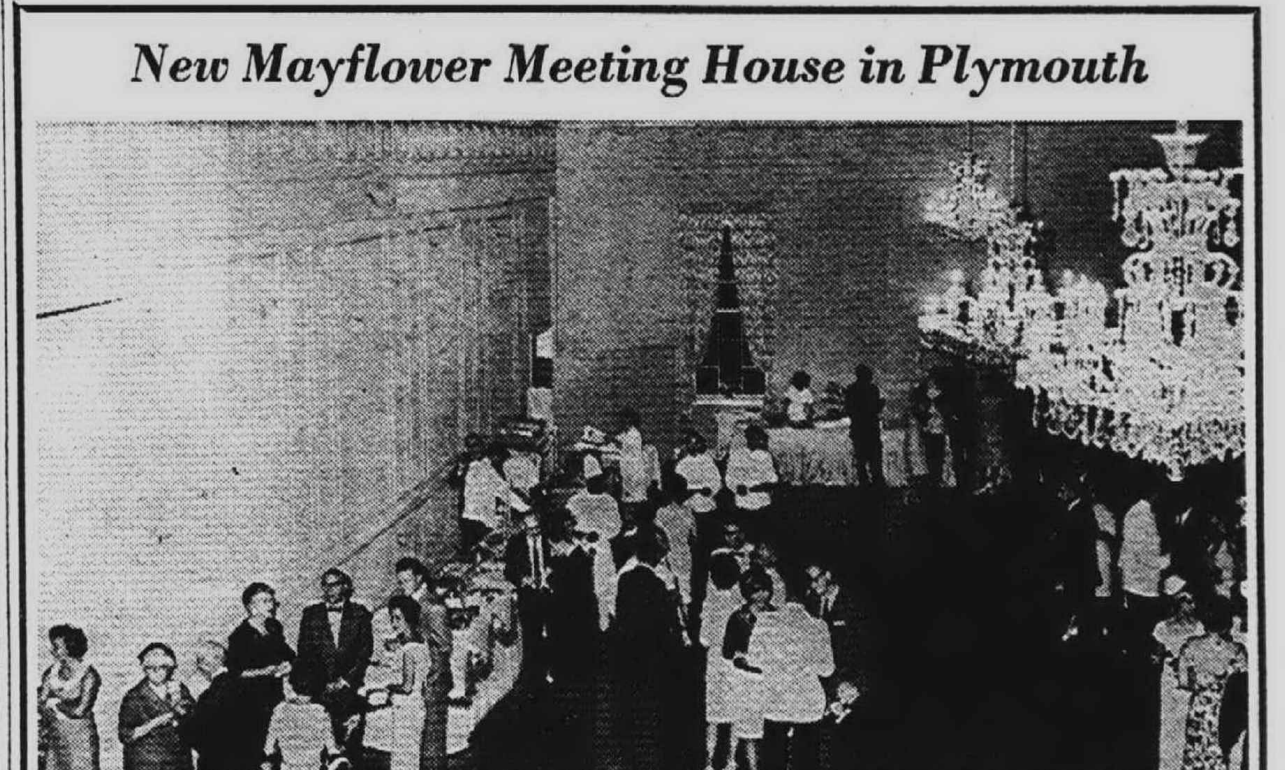
The Altar Society of St. Hilary's is working diligently to Sroka announced. "We will present for its on-coming fashion show Oct. 7, at 8 p.m., in Hudson's new auditorium at Westland Shopping Center.

Plymouth Orchestra Aided By Working Women

Board members of the Plymouth Symphony League met at the home of their president, Mrs. Marvin Sackett to plan season. The board heard reports from John Moehle, and treasurer Mrs. Harold Guenther. Attendance at

the three-day Mart hit the 3,000 figure this year, an increase of 300 over last year.

sponsored by the Nightingale Group this year. Mrs. Conrad Krankel and Mrs. Fred Signon reported that 189 bridge players have signed up this year.



New Mayflower Meeting House in Plymouth

Beauty, splendor, and all the charm of a Viennese Ball Room from the shining crystal chandeliers to the highly polished, spacious dance floor is lavishly present in Plymouth's new Mayflower Meeting House.

Reservations and Details GL 3-1620

MR. BELA. Formerly of Dearborn, Now Styling Hair at Sears Livonia Mall Lyric Beauty Salon



Permanents by Bela and Rudolph ... your Satisfaction Guaranteed!

Plan to make your appointment for an elegantly styled permanent at Sears Lyric Beauty Salon.

Table listing hair services: Tot's and Tween's Cream Permanent Wave 6.95, Teens' Oil Permanent Wave 7.95, Ladies' Protein Permanent Wave 8.95.

Monday, Tuesday, Wednesday and Thursday Specials

USE YOUR SEARS CHARGE PLATE

Ladies' and Children's hair-shaping by our men haircutting staff. Appointments Are Not Always Necessary. Hand Crafted wigs and hairpieces custom fitted... expert wig service.

SEARS LYRIC BEAUTY SALON

LIVONIA MALL, 7 Mile at Middlebelt - Phone 476-6000

Madonna Alumnae Sets Fashion Show

A Fashion Show by Fisher's of Lincoln Park and a Card Party are on the agenda of the first fall meeting of the Madonna College Alumnae Sept. 23, 7 p.m. at the Madonna College East Dining Hall.

"The Fashion Show should provide the practical woman with help suggestions on the replenishing of her fall and winter wardrobes," said Mrs. Nancy Enright, President of the Alumnae Association.

Table prizes will be awarded at the card party. Refreshments will be served during the evening. For further information call 565-8197.

Fashion Show Planned in Kendallwood

The Women of Kendallwood Farms began the season on Sept. 14th with a fashion show by Harvi's, featuring Emily Kay Murphy as commentator.

Program chairman, Mrs. William Dempster, outlined the program for the coming year which will include luncheons, a telephone card party, a special trip to the Detroit Art Museum, a theater party, and the Annual Spring Card Party.

A very important item of business was discussed and voted upon at the first meeting.

With the passage of an amendment to the By-laws, membership is now open to all women residing in the North Farmington area.

Parents Without Partners Meet Tonight at 8:30

The regular meeting of the Livonia Chapter of Parents Without Partners will be held tonight (Wednesday) at 8:30 p.m. at the United Church of the Nativity, Henry Ruff and West Chicago Rds. in Livonia.

The Livonia PWP chapter covers Livonia, Wayne, Plymouth, Northville, Farmington, Walled Lake, Milford, Garden City and the Townships of Canton, Plymouth, Redford, Salem, Nankin and Farmington. All single parents are eligible to join.

St. Genevieve Ladies Open Fall Fashions

Door prizes of a ski sweater and a transistor radio will be given away at the fifth annual luncheon and fashion show sponsored by St. Genevieve Altar Society.

Clothes from Zuleback's Suburban will be featured at the event, scheduled for Saturday, Oct. 2, at 12:30 p.m. at the Botsford Inn, Farmington. Tickets are sold only on a reservation basis and may be obtained by calling 427-6175, 427-1488 or 425-4745, according to chairman Pat Hruska.

Whether a house will become a home depends entirely on the people who live in it.

ROLL AFTER ROLL OF THE BEST IN CARPET VALUES! Large graphic advertisement for St. Clair Carpet.

How Can You Lose! St. Clair Carpet HAS THE LOWEST SHARPEST PRICES IN TOWN!

We've expanded our store to handle over 300 rolls of carpet, priced to fit every pocketbook. Now we're ready with the greatest fall selections of broadloom carpet in our history!

ALL NATIONALLY ADVERTISED MERCHANDISE

A \$7.95 Value 501 Nylon Texture 12 beautiful colors \$4.99 sq. yd.

A \$11.95 Value Acrilan Texture HEAVY LUSH TIP-SHEARED 14 beautiful colors \$7.89 sq. yd.

A \$12.95 Value Heavy Wool TIP-SHEARED PLUSH 16 beautiful colors \$8.89 sq. yd.

... Don't Just THINK About It! These New Fall Broadlooms Are Priced to Make Waiting for Sales Unnecessary!

Remnants!

Table of carpet remnants with columns for Size & Description, Reg. Price, and Sale Price.

This is a partial list

Odd Rolls!

Table of odd rolls of carpet with columns for Yds. & Description, Reg. Price, and Sale Price.

Roll Balances!

Table of roll balances of carpet with columns for Yds. & Description, Reg. Price, and Sale Price.

This is a partial list

HOME SERVICE We'll come to your home. No phone. Absolutely no obligation. GA 7-1400 KE 7-1210

NO MONEY DOWN Up to 36 Months to Pay No Payments Until January All Labor Unconditionally Guaranteed

St. Clair CARPET of Livonia Open Every Evening 'til 9 28040 JOY RD. 4 Bkls. West of Inkster Cor. of Floral GA 7-1400 KE 8-1210

Sure I Wear Bifocals ...



...but they're INVISO NO LINE GLASSES



SEARS SERVICE

- Eyes examined and glasses fitted by staff optometrists. No appointment necessary. Lenses duplicated. Frames replaced while you wait. Optical repair while you wait. Prescription sunglasses available. Satisfaction guaranteed.

Enjoy all the advantages of the finest bifocals WITHOUT the dividing line on your lenses. These invisible bifocals give you clear, comfortable vision in both the near and far ranges without any annoying jump, blur or distortion.

Table listing OPTICAL DEPTS. and OPTOMETRISTS with names and locations.



- ACRES OF FREE PARKING
- SHOP INDOORS IN COMFORTABLE WEATHER CONDITIONED COVERED MALLS

at LIVONIA MALL

RED CHECK

SORRY! NO PHONE ORDERS! • NO MAIL ORDERS!

SEARS ROEBUCK

Regular \$4.50
Sweater Collection **\$2⁹⁷**
• Sizes 3 to 6X
• Boy's and Girl's
• Novelty Knits

Regular \$24.99
Barbell Set **\$19⁹⁷**
• Save \$5.00
• Ted Williams 110 lb.
• Noiseless vinyl coated

Regular \$12.99
Men's Sweaters **\$8⁸⁸**
• Bulky mohair and wool
• Knitted trim
• S, M, L, XL

Craftsman
Power Tools **\$26⁸⁸**
• 3/8 elec. drill \$22.99
• 1/4 h.p. grinder \$26.88
• 1/3 h.p. grinder \$36.88

Allstate Fibre
Seat Covers **\$13⁸⁸**
• Installed
• Asst. plaid colors
• Regular 16.95

Allstate Permanent
Anti-Freeze **\$1⁴⁷** GAL.
• Winterize your car
• Special price now
• Buy all you need

Regular \$12.99
Boys' Parkas **\$10⁹⁷**
• Wide wale corduroy
• Full pile lining
• Zip off Hood

Regular \$15.99 Shields
Fire Chief Car **\$13⁹⁹**
• 45" body! Bell
• Red Baked Enamel
• 2 wooden ladders

HOMEMAKER SHOPS

Solid Colors Shantung Weave
Quilted Bedspreads **\$3⁹⁴**
• Regular \$7.99
• Quilted top-ruffled sides
• Twin or full size

White Textured Weave
Traverse Drapes **\$1⁴⁷** PR.
• Regular \$2.99 Pair
• 48" Wide-63" Length
• 84" length\$1.97 pr.

Double Woven Solid Color
Winter Blankets **\$2⁹³**
• If perfect, worth \$4.99
• Slight irregulars 72x84
• Electric Blanket shells

Values to \$1.00 Yard
Fabric Clearance **25^c** YD.
• Dacron and Arnel blends
• Embossed, Puckers, Crepes
• Sport Weave Cottons

"Cannon" solid white
Muslin Sheets **\$1⁸³**
• Worth to \$2.29
• 72"x108" or twin fitted
• 81x108 or dbl. fitted

Solid Color Sculptured
24" x 70" Runners **\$2⁷¹**
• Regular \$3.99
• Hi-Lo loop & Cut Pile
• Non-skid washable

24" x 46" Bath size
Martex Towels **\$1⁰¹**
• Regular \$1.99 prints
• Heavy cotton terrycloth
• 16"x28" size 74c

Leatherlite Finish
Vinyl Hassocks **\$3⁵⁷**
• Regular \$6.99
• Floor & Display Samples
• Heavy Cushioned

SINGER

Model 600 E
Touch & Sew Console **\$50** SAVE
• In desk
• Automatic Bobbin Winder
• Chain stitch feature

Singer 6 Piece
Zig-Zag Set **\$179⁹⁵**
• Mod'l 327, 337
• Button Hole Attach.
• Cabinet & Stool

Save on Brand New
Canister Cleaner **\$34⁸⁸**
• Model E-9
• With attachments
• A real saving

Singer Young Budget
5-Pc. Sewing Outfit **\$99**
• Model 285
• Machine, cabinet, book
• Storage seat, button holer

At Singer
Transistor Portable **\$19⁷⁷** Comp.
• Phono set
• Comes complete
• Sale priced

Singer Sell-a-thon Sale
5 DAY HOME TRIAL
• Singer sewing machine of your choice
• No obligation

ALBERT'S

Regular \$16.98
Benchwarmer **\$12⁹⁸**
• Zip front
• Pile lined
• Wool Melton Hood

Regular 6.99
Genuine Leather Loafers **\$4⁸⁸**
• Brown, black, and tan
• Narrow 6 to 10
• Medium 4 1/2 to 10

Regular \$8.98
Fur Blend Sweaters **\$5⁹⁹**
• Full fashioned
• Classic cardigan
• Pullover

Regular \$7.99
Waxhide Booties **\$5⁸⁸**
• Perfect for slacks
• Ideal for skirts
• Save at this price

Regular to \$16.98
Dresses **\$8**
• Bonded novelty knit
• Sharp new colors
• By Famous Makers

Regular \$3.99
Hand Bags **\$2⁸⁸**
• Shoulder strap
• Many styles
• Many colors

ENCORE RESTAURANT

Family styled chopped
Steak Dinner **\$3**
• Deliciously char-broiled
• Coffee, jello or rice pudding
• Potatoes, salad, roll, butter

Delicious
Fish and Chips **\$1**
• All you can eat • An Encore special
• Friday only

An Encore Feature
HOMEMADE PIES
• good variety to choose from
• other tempting desserts

There's Nothing Quite Like Rose Petal



An unlikely combination, but nevertheless the kind of wondrous, exciting and unusual discovery you're liable to make any day at Livonia Mall... because we do like to amuse and entertain shoppers as well as provide merchandise and service.

40 ULTRA MODERN STORES... SHOP

LIVONIA MALL SHOPPING CENTER

THURSDAY and FRIDAY ONLY!

KID DAYS

LIVONIA MALL

7 Mile at Middlebelt

STORES OPEN
THURSDAY & FRIDAY
9:30 A.M. to 9 P.M.

• NO LAYAWAYS! WHILE QUANTITIES LAST!

**HUNDREDS OF OTHER RED CHECK SPECIALS
IN ALL LIVONIA MALL STORES ...**

KRESGES

Regular 29c Scarfs • Nylon crepe • Size 30"x30" • Buy several	17^c	Final Clearance Skate Boards • Rinky - Dink • Values to \$2.77 • Real Buys	99^c
Regular 88c Toilet Tissue • 10 roll pack • Top quality • Stock up	68^c	Regular 59c Educational Books • Assorted subjects • Discontinued numbers • All grades	44^c
Multi Purpose Bolster Pillow • Zipper • Regular \$1.98 • Variety of colors	\$1²⁷	Regular 97c Bamboo Rakes • 24" spread • 62" Long • Special Price	77^c

CROWLEY'S

Special Purchase New Fall Jewelry • Necklaces, bracelets • Simulated pearl chains • Pins, pins, earrings	59^c <small>Two for \$1.00</small>	Here's a dandy! Limit one Plastic Clothes Baskets • Full 2-bushel capacity • Will not stain or snag • Solid bottoms	98^c
Specially Reduced New Printed Jersey • Regular \$1.19 Quality • Crease resistant • Nylon, Arnel 45" YD.	77^c	Our Regular \$3.00 Quality! Men's Terry Shorts • Grand for traveling • Med. lge. X Large • Washable 100% cotton	\$1⁵⁰
For Boys in Sizes 3 to 8 Cotton Flannel Shirts • Western Style design • Corduroy trim • Machine washable	\$1⁰⁸	Budget Store Special Boys' Warm Jackets • Pile-lined poplin • Zippered — 8 to 18 • Orlon acrylic lining	\$6⁹⁹

CUNNINGHAM'S

Regular \$1.00 size Head & Shoulders • Limit one • Famous Brand Shampoo • A real saving	59^c	54-inch Quilted Garment Bag • Limit two • Holds 16 garments • A value at this price	77^c
Regular 98c size BAN Roll-On • Limit one • Popular deodorant • Save at this price	59^c	Regular \$1.79 Cuneco Vacuum Bottle • Full pint size • Limit one • Special saving	99^c
100 Count Bottle Chock's Chewables • High quality vitamins • Limit one • Specially priced	\$1⁷⁷	Regular 59c Mac Diarmid's Ice Cream • 1/2 gallon • Limit one • Variety of flavors	39^c

SHIFMAN'S

Men's and Women's MATCHING SWEATERS • Many Colors—Styles • Cardigans • All Sizes Reg. \$12.95 - 16.95	\$9⁹⁷ 2 for \$18.00	Men's Long Sleeve SHIRT JACS • Latest Style • Many colors • All sizes Reg. \$5.95 - \$7.95	\$3⁹⁷ 2 for \$7.50
Odds and Ends MEN'S SWEATERS • Pullover • Cardigans • Sleeveless Reg. \$10.95 - \$19.95	\$6⁹⁷	Special Selling! BOYS' OUTER JACKETS • Big Selection • Huge Savings • Sizes 12-20 Reg. \$10.95 - \$14.95	\$7⁹⁷

Scattered Among the Fall Fashions

So, next Saturday, September 25, you'll find more than 2,000 Rose plants on exhibit in our Rose Show on the Mall ... and you'll discover an exciting treasure of Fall Fashion merchandise in all 40 stores and services. You can always find a little more excitement, a little extra enjoyment in shopping at Livonia Mall.



72° AIR CONDITIONED COMFORT.

LIVONIA MALL CARD SHOP

Regular 25c Party Lites • By Nob Hill • 12 different scents • 12 colors	19^c
Regular 28c Twisted Candles • Nob Hill originals • Assorted Colors • 8" dripless smokeless	18^c
Regular \$1.25 Perfume Candles • In apothecary jar • 6 different colors • 6 different scents	98^c

7 MILE at MIDDLEBELT ROADS



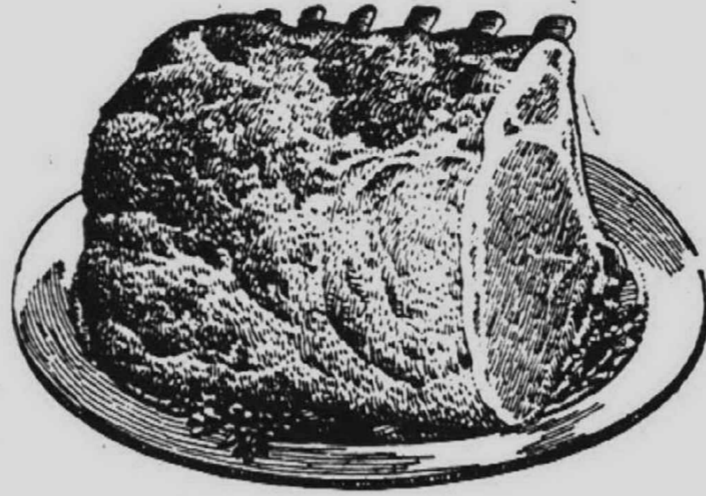
Closed Sunday As Usual!

"Super-Right" Mature Beef Standing Rib Roast

4th and 5th Ribs **79^c** lb

First 5-Ribs **85^c** lb
First 3-Ribs **89^c** lb

"SUPER-RIGHT" QUALITY PORK LOINS



Full 7-Rib Portion

lb **39^c**

Loin End Portion

lb **49^c**

Center Rib Chops .. **89^c** lb

"SUPER-RIGHT" QUALITY, U.S.D.A. GRADE "A"—10 to 12 Pound Sizes

Young Turkeys LB. **39^c**

"SUPER-RIGHT" SKINLESS All-Meat Franks 1-LB. PKG. **49^c** 2 LB. PKG. **93^c**

"SUPER-RIGHT" Country-Style Spare Ribs .. LB. **49^c**

"SUPER-RIGHT" QUALITY, GOVERNMENT INSPECTED

FRESH FRYERS

Cut-Up Fryers **31^c** lb

Whole Fryers **27^c** lb

No Coupons, No Gimmicks, No Limits ... Just Quality Merchandise at Low Prices!

NEW LOW PRICE!



Eight O'Clock COFFEE **3** LB. BAG **1⁹⁹**
1-Lb. Bag.....69^c

EVERY-DAY LOW PRICES

- LARGE SIZE Ivory Soap **2** CAKES **37^c**
- PERSONAL SIZE Ivory Soap **4** BARS **33^c**
- GIANT SIZE Oxydol **3**-LB. 1-OZ. PKG. **79^c**
- SAVE AT A&P Spic & Span **3**-LB. 6-OZ. PKG. **82^c**
- GIANT DETERGENT Tide **3**-LB. 1-OZ. PKG. **74^c**
- GIANT SIZE Ivory Snow **1**-LB. 15 1/2-OZ. PKG. **81^c**
- LIQUID DETERGENT Joy **1**-QT. BTL. **80^c**
- DETERGENT Cheer **3**-LB. 1-OZ. PKG. **74^c**
- GIANT SIZE — 10c OFF LABEL Ajax Detergent **3**-LB. 1-OZ. PKG. **64^c**
- LIQUID DETERGENT Palmolive 12c OFF LABEL **1**-PT. 6-OZ. BTL. **46^c**
- ALL PURPOSE CLEANER Ajax Liquid 13c OFF LABEL **1**-PT. 12-OZ. BTL. **46^c**
- POWDERED Action Bleach **1**-LB. 6-OZ. PKG. **59^c**
- FLOOR & WALL 6c OFF LABEL Ajax Cleaner **1**-LB. PKG. **23^c**
- CHILDREN'S BUBBLE BATH Soaky Liquid **11**-OZ. PLASTIC **59^c**
- 2c OFF LABEL—NET WT. 14-OZ. Ajax Cleanser **2** CANS **25^c**
- SANDWICH BAGS Baggies **25** IN. PKG. **39^c**
- SAVE AT A&P Baggies Food Wrap **50** IN. PKG. **29^c**

- PURE VEGETABLE dexo Shortening **3** LB. CAN **69^c**
- YOUR CHOICE: Peach, Pineapple or Apricot Ann Page Preserves **1**-LB. JAR **29^c**
- ANN PAGE CREAMY OR KRUNCHY Peanut Butter **12**-OZ. JAR **35^c**
- A&P HOMESTYLE—HALVES OR SLICED Freestone Peaches **3** 1-LB. 13-OZ. CANS **89^c**
- SALAD DRESSING Miracle Whip **QUART** JAR **49^c**



Iona Peas **4** 1-LB. CANS **49^c**

- IONA BRAND Cut Wax Beans **4** 1-LB. CANS **49^c**
- PAW PAW Grape Drink **2** 1-QT. CANS **49^c**
- SUNNYFIELD Pancake Flour **5** LB. PKG. **49^c**
- ANN PAGE Blended Syrup **1**-PT. 8-OZ. BTL. **49^c**
- KRAFT'S MIRACLE—2c OFF LABEL Margarine **1**-LB. CTN. **34^c**
- CHICKEN-OF-THE-SEA—Net Wt. 6 1/2 oz. Tuna Fish Light, Chunk Style **4** CANS **99^c**
- 8c OFF LABEL Maxwell House Coffee **2**-LB. CAN **1⁵⁵**
- NABISCO CEREAL Team Flakes **1**-LB. BOX **41^c**

Red Flame Tokay Grapes 2 Lbs. 29^c	Mich. McIntosh Apples U.S. No. 1 Grade 6 LB. BAG 49^c
--	---

Cherry Pie
Save 16^c
Jane Parker 8-Inch Size **39^c** 1-LB. 8-OZ.

JANE PARKER 100% Whole Wheat Bread . . . **1**-LB. LOAF **21^c**

Here are 5 good reasons for not buying Jane Parker White Bread:

JANE PARKER'S
1. Whole Wheat 3. Raisin
2. Rye 4. Cracked Wheat
5. Pumpernickel

Actually, there are 20 or more. The variety of delicious Jane Parker Breads is greater than anyone else offers.

Vol. 2 Now on Sale!
THE AMERICAN HERITAGE
ENCYCLOPEDIA GUIDE TO THE UNITED STATES
VOL. No. 1 **49^c**
Volumes 2 thru 16 **99^c**
BUY A BOOK A WEEK!

PRICES EFFECTIVE IN ALL A&P STORES IN THIS AREA OF MICHIGAN

CHEERIO Chocolate Covered Ice Cream Bars **12** IN. PKG. **49^c**

FACIAL TISSUES
2-Ply Angel Soft **3** BOXES OF 200 **49^c**

ANN PAGE PROVES Fine Foods Needn't Be Expensive
Sparkle Gelatin Desserts
Net Wt. 3-Oz. **4** PKGS. FOR **29^c**

THE GREAT ATLANTIC & PACIFIC TEA COMPANY, INC.
A&P Super Markets
AMERICA'S DEPENDABLE FOOD MERCHANT SINCE 1859
All Prices Effective through Sat., Sept. 25th

U-M Economists Cite 'Guilt' Over Installment Buying

ANN ARBOR—Americans are the world's greatest users of consumer credit — but we are not always happy about our borrowing habits, three well-known University of Michigan authorities point out in their new book.

Consumer installment credit outstanding grew in four decades from about \$1 billion at the end of World War I to \$48 billion in the early 1960's, a rate of growth that was about double the average rate of increase in the national income, it is explained in "Consumer Installment Credit and Public Policy" published by the Bureau of Business Research in the U-M Graduate School of Business Administration.

Author Paul W. McCracken, a former member of the President's Council of Economic Advisers, James C. T. Mao, a specialist in the theory of finance, and Cedric Fricke, one time economic researcher with a major automobile manufacturer, point out the advantages of this economic development:

"The rapid growth in the volume of installment credit was accompanied by an equally vigorous development in other characteristics of the industry. The purposes for which credit can be obtained have broadened considerably from those of earlier years. From financing people in distress, or in want of a piano, sewing machine, or piece of furniture, consumer credit has come to be used widely by consumers in financing the array of consumer capital goods with which the typical modern household is equipped.

"Lending institutions have also displayed a characteristic American penchant for innovation by adapting the form and terms to meet new needs," the U-M authorities say.

"Down payment requirements have been reduced and terms liberalized . . . And in the process additional numbers of families have found it financially possible to acquire some of the appurtenances of a higher material level of living than had heretofore been within their reach. With these developments installment borrowing achieved respectability and status."

Emergence of a well-developed installment credit industry was essential to the whole process of mass production for new mass markets, which require that means of financing be readily available to consumers, they add.

"At the same time that we recognize intellectually the role of the installment credit industry in promoting our economic progress, as a nation we are still not entirely sure whether we feel very happy about the rapid expansion in the use of credit by consumers," they declare. "To some extent this may reflect a cultural lag, another manifestation of how the sins of the fathers are visited upon the children.

"In its early history, lending to consumers did have its less happy aspects: costs were high, and advantage was often taken of borrowers' ignorance. It may well be that subconsciously we continue to wonder if those evil practices are lurking in the shadows, awaiting an opportunity to spring out at us if we do not keep our guard."

As a result of this ambivalent view, we can welcome and applaud the automobile, appliance, and other great industries as "evidence of America's peculiar genius for progress," and at the same time feel uneasy about the rise in use of consumer installment credit, the authors explain.

The book raises five key questions and answers them this way:

1) Do movements in consumer installment borrowing make the economy significantly more unstable? Not significantly, the authors say. They are a source of changes in general business conditions but not a major part of the problem.

2) Is direct regulation of installment borrowing essential for the effective operation of general monetary and credit policy? No. Present instruments of monetary control can be expected to limit appropriately the expansion of total credit, the authors point out. Since 1951 the Federal Reserve has been fully capable of bringing pressure on the money market when it deemed that course to be good economic policy.

3) Would government regulation of installment borrowing enhance the welfare of consumers themselves by curbing their propensity to buy on time? No, the authors say again. "First, we believe in the sovereignty of consumers; it is for them to decide the best way to allocate their resources. Second, the variable reasons for defaults and the remarkable similarity in the characteristics of good and delinquent loans make us doubt the feasibility of government regulation."

4) Do the lessons from our past experience of controls on consumer credit suggest a need for their continuation?

No. "Selective direct control of installment credit poses many difficult problems of administration and equity."

5) What are the prospects for the further growth of installment credit? "Our analysis indicates that the underlying growth factors will continue to operate in the future. Three projections were made to illustrate the possible course of installment credit during the 1960's. These projections suggest that installment credit will continue to grow, but at a lower rate than in the past . . . We do not believe, therefore, that a strong case exists for direct peacetime regulation of installment credit."

START TODAY! YOU MAY WIN \$1,000



PLAYING FOOD FAIR'S NEW CASH GIVEAWAY GAME SPOT-O-GOLD

★ JOIN THE FUN TODAY!
★ EVERYBODY MUST WIN!
★ NO PURCHASE REQUIRED!

1. Get your Spot O Gold card from the cashier on your next visit to Food Fair.
2. Carry the card on every trip to Food Fair. You'll get a FREE punch every week. Anyone can play and you can win more than once.
3. When the card is completely punched, your manager will remove the gold spot and reveal your prize.

U. S. Choice Steak Sale!

FOOD FAIR STEAK AT ITS TENDER BEST!



Pictured here are the finest, tenderest steaks your money can buy. These are the kind of steaks you will always find at Food Fair . . . the kind your family can hardly wait to sink their teeth into. Get your U.S. Choice steaks in your Food Fair Meat Department today.

FAMOUS FOOD FAIR
U.S. Choice Round Steak
LB. **89¢**

FAMOUS FOOD FAIR
U.S. Choice Sirloin Steak
LB. **99¢**

- JUICY, PLUMP, GRADE 1 **Peters Skinless Wieners** 2 LB. PKG. **89¢**
- DELICIOUS, GRADE 1, SLICED **Peters Large Bologna** 1 LB. PKG. **49¢**
- SWEETMILK OR BUTTERMILK **Tasty Pillsbury Biscuits** 8 OZ. TUBE **7¢**
- ECONOMICAL, ALL PURPOSE **Farm Maid Half & Half** QT. **39¢**
- FARM MAID CREAMED **Cottage Cheese** 2 1-LB. CTNS. **49¢**

Perfect For Your Quick Lunches
CAMPBELL'S ASSORTED CONDENSED

Vegetable Soups

3 10½-OZ. CANS 28¢ WITH COUPON BELOW

Spot O Gold Is Fun & Easy!

Made With Plump Tomatoes

Get Your Spot O Gold Card At Any Food Fair!

STAR CROSS RICH Tomato Sauce
8 OZ. CANS **4 28¢** WITH COUPON BELOW

- Buy More And Save More
- KRAFT SALAD DRESSING **Miracle Whip** QT. JAR **48¢**
 - BREAST-O-CHICKEN **Chunk Light Tuna** 6½ OZ. CAN **24¢**
 - DEL MONTE **YELLOW CLING HALVES, OR Sliced Peaches** 1 LB., 13 OZ. CAN **23¢**
 - RICH IN FLAVOR—TOWN PRIDE **Peanut Butter** 1 LB., 2 OZ. JAR **49¢**
 - FLAVORFUL, RICH FARM MAID **Evaporated Milk** 14½ OZ. CAN **12¢**
 - FOR BRIGHTER WASHES **Roman Bleach** GAL. JUG **44¢**
 - CHARMIN PAPER **Table Napkins** 60 CT. PKG. **10¢**
 - SPECIAL LABEL . . . STRONG **Ajax Detergent** 3 LB., 1¼ OZ. BOX **59¢**
 - LADY LINDA SLICED **White Bread** 2 1-LB. 4-OZ. LOAVES **25¢**

A WEIGHT WATCHERS SPECIAL!

Wesley's Ice Milk
½ GAL. CTN. **39¢**

Everybody Likes Spot O Gold!

HOME GROWN RED RIPE **Tomatoes**
LB. **19¢**

Everybody Wins—Play Food Fair's Spot O Gold Game!

Clip These Valuable Food Fair Coupons For Extra Savings!

<p>A 50 EXTRA S & H STAMPS With this coupon and a PURCHASE OF \$5 OR MORE Excluding beer, wine, bakery and tobacco products. Thru Sat., Sept. 25. Limit: One coupon.</p>	<p>D CAMPBELL'S CONDENSED VEGETABLE SOUPS 3 10½ OZ. CANS 28¢ With this coupon and \$5 purchase, or more, excluding beer, wine and tobacco products. Thru Sat., Sept. 25. Limit: one coupon.</p>	<p>C RICH STAR-CROSS TOMATO SAUCE 4 8 OZ. CANS 28¢ With this coupon and \$5 purchase, or more, excluding beer, wine and tobacco products. Thru Sat., Sept. 25. Limit: one coupon.</p>	<p>E FREE WITH THIS COUPON DOUBLE PUNCH ON SPOT O GOLD CARD ON YOUR TOTAL PURCHASE excluding beer, wine, bakery, and tobacco products. Good thru Sat., Sept. 25. Limit: one coupon.</p>
---	--	--	--

CLIP COUPON FOR **DOUBLE PUNCH** ON YOUR SPOT-O-GOLD CARD

FOOD FAIR Markets

- 35323 Plymouth at Yale Livonia
- 27428 W. 6 Mile at Inkster Livonia
- Wonderland Shopping Center Livonia
- 27200 Joy Road at Inkster Redford Township
- 23632 Plymouth at Telegraph Redford Township
- 8244 Merriman Near Ann Arbor Trail Nankin Township
- Kendallwood Center 12 Mile at Farmington Road Farmington
- 27415 Schoolcraft at Inkster Livonia
- 705 South Main at Linden Plymouth
- Downtown Farmington Farmington Road, South of Grand River
- Livonia Mall 7 Mile at Middlebelt Livonia

MOST FOOD FAIRS OPEN DAILY 9-9 SAT. 8-9
Prices Effective thru Saturday, Sept. 25
Right Reserved to Limit Quantities

To the Citizens: Your attention is called to the financial and statistical report of the Plymouth Community School District for the fiscal year ending June 30, 1965.

"In our opinion the accompanying combined balance sheet of the various Funds and the related statements of revenues, expenditures and fund equity present fairly the financial position of the various Funds of the Plymouth Community School District of Wayne and Washtenaw Counties at June 30, 1965, and the results of their operation for the year then ended, in conformity with accounting procedures recommended for educational institutions by the Michigan Department of Public Instruction, applied on a basis consistent with that of the preceding year."

Of special interest are the three projects financed from the Building and Site Sinking Fund; namely, the Allen, Farrand and Senior High School Additions. Building projects started and for the most part completed during the 1964-65 school year included a seven classroom addition to Farrand Elementary School, an eight classroom and library addition to Allen Elementary School and a Vocational Education Addition to Plymouth High School.

The excess of expenditures over revenues in the general fund amounting to \$139,426.42 will be partially offset by an increase in anticipated 1965-66 revenue from a 3.25 mill increase in general fund taxes voted by the electorate in March, 1965, and additional state funds.

The Board of Education solicits continued interest and participation in the part of citizens in the long range development of the school system. Careful planning is essential to cope with the rapid growth in population.

Citizens are invited to call the Central Administration Office, 453-0200, for further information regarding the Annual Report.

Respectfully submitted, Russell L. Isbister Superintendent of Schools

1964-'65 ANNUAL REPORT of the PLYMOUTH COMMUNITY SCHOOL DISTRICT Plymouth, Michigan

BOARD OF EDUCATION

July 1, 1964 - June 30, 1965

- Gerald J. Fischer, President; Carl Schultheiss, Vice President; Ernest L. Henry, Trustee; Esther L. Hulsing, Secretary; John D. McLaren, Trustee; Robert R. Soth, Treasurer; Robert S. Jenkins, Trustee; Russell L. Isbister, Superintendent of Schools

PHYSICAL ASSETS and GENERAL INFORMATION (June 30, 1965)

Table with 4 columns: Description, Appraised Value of School Property, Value of Sites, Value of Buildings (Replacement Cost), Value of Equipment (Actual Cash Value), Number of Buildings, Number of Classrooms, Number of Teachers, Teacher Salaries (A.B. Degree, M.A. Degree, M.A. + 30 Hrs.), Median Teacher Salary, Number of Resident Elementary Pupils, Number of Non-Resident Elementary Pupils, Number of Resident Secondary Pupils, Number of Non-Resident Secondary Pupils, Total Official Enrollment (1964-65)

FINANCIAL REPORT OF THE PLYMOUTH COMMUNITY SCHOOL DISTRICT FOR 1964-1965

The Plymouth Community School District of Wayne and Washtenaw Counties here-with presents the financial report of the Plymouth Community School District indicating the financial position of all school district funds for the fiscal year 1964-65.

GENERAL FUND

(The General Fund consists of all monies collected for the specific purpose of carrying on the current operations of the school district.)

Statement of Revenues, Expenditures and Fund Equity

July 1, 1964 to June 30, 1965

Table with 2 columns: Revenue, Expenditures. Revenue includes Property Taxes, State Aid, Vocational Education, etc. Expenditures include Administration, Elementary Instruction, Secondary Instruction, etc.

Table with 2 columns: Description, Amount. Includes Replacement of Equipment, Fixed Charges, Capital Outlay, Outgoing Transfers, etc.

GENERAL FUND—Balance Sheet

June 30, 1965

ASSETS

Table with 2 columns: Description, Amount. Assets include Cash, Accounts Receivable, Prepaid Insurance, etc.

LIABILITIES AND FUND EQUITY

Table with 2 columns: Description, Amount. Liabilities include Accounts Payable, Summer School Deposits, etc. Fund Equity is also shown.

REVOLVING FUND

(The Revolving Fund consists of all money received and paid out in connection with food services, bookstores, athletic department, adult education-recreation department and community services as required.)

Statement of Revenues, Expenditures and Fund Equity

July 1, 1964 to June 30, 1965

Table with 3 columns: Revenues, Expenditures, Net Revenue. Includes Cafeterias, Bookstores, Recreation and Adult Education, etc.

Table with 2 columns: Description, Amount. Excess of Revenues over Expenditures for the year ended June 30, 1965.

REVOLVING FUND—Balance Sheet

June 30, 1965

ASSETS

Table with 2 columns: Description, Amount. Assets include Cash in Bank, Accounts Receivable, Inventories, etc.

LIABILITIES AND FUND EQUITY

Table with 2 columns: Description, Amount. Liabilities include Accounts Payable, Fund Equity, etc.

BUILDING AND SITE SINKING FUND

(The Building and Site Sinking Fund consists of funds for paying for building and sites from the current tax levy voted for this purpose and the sale of short term bonds authorized by the Municipal Finance Commission.)

Statement of Revenues, Expenditures and Fund Equity

For the Year Ended June 30, 1965

Table with 2 columns: Revenues, Expenditures. Includes Property Taxes, Interest on Delinquent Taxes, Proceeds of Bonds Sold, etc.

Table with 2 columns: Description, Amount. Includes Legal and Advertising, Miscellaneous, Capitalized Interest on Bonds Sold, etc.

BUILDING AND SITE SINKING FUND

Balance Sheet—June 30, 1965

ASSETS

Table with 2 columns: Description, Amount. Assets include Cash in Bank, Taxes Receivable, Interest Receivable, etc.

LIABILITIES AND FUND EQUITY

Table with 2 columns: Description, Amount. Liabilities include Due to 1964 Debt Retirement Fund, Fund Equity, etc.

DEBT RETIREMENT FUNDS

(The Debt Retirement Funds consist of all tax monies collected for the specific purpose of paying the bonded debt of the school district.)

Table with 4 columns: 1955 Debt, 1964 Debt, TOTAL, Description. Includes Revenues (Current Tax Levy, Interest on Delinquent Taxes) and Expenditures (Bond Principal, Bond Interest, etc.).

NICHOLS TRUST FUND

(The Nichols Trust Fund consists of a private grant which is invested. The interest from the investment is used specifically for library purposes.)

Statement of Revenues, Expenditures and Fund Equity

July 1, 1964 to June 30, 1965

Table with 2 columns: Revenues, Expenditures. Includes Detroit Edison Dividends, Total Revenues, etc.

NICHOLS TRUST FUND

Balance Sheet June 30, 1965

ASSETS

Table with 2 columns: Description, Amount. Assets include Cash in Bank, Investments, etc.

FUND EQUITY

Table with 2 columns: Description, Amount. Fund Equity includes Fund Equity, June 30, 1965.

STUDENT ACTIVITIES FUND

(The Student Activities Fund consists of monies received from school organizations and paid out for expenses of the organizations. No tax or operating monies are included in this fund.)

Summary of Revenues, Expenditures and Fund Equity

July 1, 1964 to June 30, 1965

Table with 2 columns: Description, Amount. Includes Fund Equity, July 1, 1964, Total Revenues, Total Expenditures, etc.



SHOP ANYDAY

COPYRIGHTED 1965—
BI-LO SUPER MKT.
REPRODUCTION IN
WHOLE OR PART IS
STRICTLY PROHIBITED.

29600 MICHIGAN AVE
AT MIDDLEBELT RD.
INKSTER, MICH.

SHELDEN *Shopping* CENTER
PLYMOUTH & FARMINGTON RD.
LIVONIA, MICH.

PRICES EFFECTIVE THRU TUESDAY, SEPT. 28, 1965.

BI LO SELECTED BEEF RIB OR

ROUND STEAK

79¢

LB

BI LO SELECTED BEEF

T-BONE STEAK

99¢

LB

BI LO SELECTED BEEF

SIRLOIN STEAK

89¢

LB

BI-LO SELECTED BEEF—SHOULDER CUT OR

ENGLISH ROAST

69¢

LB

BI-LO SELECTED BEEF—BLADE CUT

CHUCK STEAK

59¢

LB

GUARANTEED FRESH-GROUND

HAMBURGER

43¢

3-LBS OR MORE LB

BI-LO SELECTED BEEF—BONELESS

RUMP ROAST

99¢

LB

BI-LO SELECTED BEEF

CUBE STEAK

99¢

LB

GLENDALE SLICED 6 DELICIOUS VARIETIES

LUNCHEON MEAT

59¢

LB PKG

BI-LO SELECTED BONELESS BEEF

CHUCK ROAST

79¢

LB

FRESH PICNIC STYLE

PORK ROAST

29¢

LB

MARHOEFER

Canned HAMS

79¢

70-LB SIZE LB

BI-LO SELECTED BEEF—BITE SIZE BONELESS

STEWING BEEF

79¢

LB

FARM FRESH—TURKEY WINGS OR

DRUMSTICKS

29¢

LB

SEA PAK FROZEN

Breaded SHRIMP

99¢

1-LB PKG

POT ROAST CUT

CHUCK ROAST

49¢

LB

HICKORY SMOKED
WHOLE OR HALF

Semi BONELESS HAMS

65¢

LB

CENTER CUT RIB

PORK CHOPS

89¢

LB

BORDEN'S RICH

COTTAGE CHEESE

19¢

1-LB CTN

ELSIE ASSORTED

TWIN POPS

12 37¢

CT PKG

BORDEN'S — 1/2 PINT CTN

Whipping Cream

29¢

WISCONSIN FRANKENMUTH

Mild Cheese

59¢

LB

MORTON GERMAN

Chocolate Cake

44¢

13-OZ PKG

BORDEN'S BRAND

ICE MILK

39¢

1/2-GAL CTN

SLICED ECONOMY PACK, AMERICAN OR PIMENTO

Wisconsin CHEESE

59¢

LB

KRAFT PHILADELPHIA

Cream Cheese

27¢

8-OZ PKG

ORE IDA HASH BROWN

Potatoes

27¢

2 LB PKG

TREESWEET FROZEN FLORIDA

Orange Juice

15¢

6-OZ CAN

REGULAR OR BUTTERMILK

Sun Lite Biscuits

7¢

8-OZ PKG

HOMOGENIZED—PLUS BTL DEPOSIT

Borden's Milk

36¢

1/2-GAL

BI-LO LOW PRICE

Harvest Waffles

9¢

5-OZ PKG

CHEF'S BEST

French Fries

8¢

9-OZ PKG

BI-LO LOW PRICE

Homestead Oleo

16¢

1-LB ROLL

CHEF DELIGHT

Cheese Spread

49¢

2 LB PKG

BEEF, CHICKEN OR TURKEY

Banquet Pies

15¢

8-OZ PKG

PINEAPPLE FROZEN

Dole Juice

19¢

6-OZ CAN

BONNIE BAKED HAMBURGER OR

Wiener Rolls

39¢

2 8-CT PKGS

HEARTH BAKED

Pumpnickel

29¢

1-LB 4-OZ LOAF

BONNIE BAKED-SLICED

WHITE BREAD

2 39¢

1-LB 4-OZ LOAVES

BONNIE BAKED

Rye Bread

19¢

1-LB LOAF

BONNIE BAKED

Cinnamon Rolls

29¢

8-CT PKG

SAVE EVERYDAY

OPENING SOON

ANOTHER GREAT NEW BI-LO SUPER MARKET

24135 JOY RD.

JOY RD. AT TELEGRAPH

STORE HOURS!
 MON. THRU FRI. 9 A.M. TO 9 P.M.
 SATURDAY 8 A.M. TO 9 P.M.

OPEN SUNDAY

10 A.M. TO 6 P.M.

COPYRIGHTED 1965—
 BI-LO SUPER MKT.
 REPRODUCTION IN
 WHOLE OR PART IS
 STRICTLY PROHIBITED.

EVERYDAY LOW PRICES!

	3 99 ¢ LB JAR
	5 49 ¢ LB BAG
	EVERYDAY LOW PRICE! * 29 ¢ 4-OZ CAN
	EVERYDAY LOW PRICE! * 27 ¢ GUEST SIZE 6 1/2-OZ CAN
	EVERYDAY LOW PRICE! * 18 ¢ 1-LB, 1-OZ CAN
	SLICED OR HALVES 22 ¢ 1-LB, 13-OZ CAN
	EVERYDAY LOW PRICE! * 48 ¢ QT JAR
	EVERYDAY LOW PRICE! * \$1 99 GALLON

KRAFT CREAMY MAYONNAISE	QUART JAR	59 ¢
CHOCOLATE SYRUP BIG SHOT	1 1/2-OZ CAN	55 ¢
ALL PURPOSE SHORTENING SNOWDRIFT	3 LB CAN	55 ¢
EVAPORATED PET MILK	14-OZ CAN	14 ¢
GIFFY BISCUIT MIX	2-LB, 8-OZ BOX	33 ¢
WITH MEAT HORMEL CHILI	1-LB CAN	31 ¢
BUMBLE BEE RED SALMON	1-LB CAN	79 ¢
DELICIOUS HI-C ORANGE DRINK	1-QT, 14-OZ CAN	25 ¢
HAWAIIAN PINEAPPLE DOLE JUICE	1-QT, 14-OZ CAN	25 ¢
HUNT'S Fruit Cocktail	15-OZ CAN	19 ¢
HART-15-OZ CAN Asparagus Spears		21 ¢
KELLOGG'S CORN FLAKES	12-OZ PKG	23 ¢
QUICK OR REGULAR MOTHERS OATS	1-LB, 2-OZ BOX	22 ¢
STREAK DOG FOOD	1-LB CAN	7 ¢
LADY SCOTT FACIAL TISSUE	200 DOUBLES	24 ¢
BI-LO PRICED BOOK MATCHES	50-CT PKG	10 ¢
CINDY LIQUID DETERGENT	QT BTL	39 ¢
ALL FLAVORS NESTLE'S KEAN	12-OZ JAR	25 ¢
BI-LO LOW PRICE ALKA SELTZER	25-CT BTL	39 ¢

	EVERYDAY LOW PRICE! * 5 ¢ ALL FLAVORS 3-OZ PKG
	10X POWERED, LIGHT OR DARK BROWN 15 ¢ 1-LB PKG
	EVERYDAY LOW PRICE! * 43 ¢ 12-OZ CAN
	EVERYDAY LOW PRICE! * 44 ¢ GALLON JUG
	WHOLE KERNEL OR CREAM STYLE 15 ¢ 1-LB, 1-OZ CAN
	EVERYDAY LOW PRICE! * 15 ¢ 7 1/2-OZ PKG
	REG OR DRIP SPECIAL LABEL 69 ¢ 1-LB CAN
	EVERYDAY LOW PRICE! * 15 ¢ 14-OZ BTL

U.S. NO. 1 MICHIGAN POTATOES

10 39¢
LB BAG

NEW CROP YELLOW ONIONS.....

10 59¢
LB BAG

HOME GROWN FRESH CABBAGE.....

10¢ EACH

LOUISIANA CANDY YAMS

10¢
LB

INDIAN SUMMER SWEET APPLE CIDER.....

49¢
GAL JUG

A \$5.00 PURCHASE ENTITLES YOU TO ALL COUPON ITEMS BELOW!

VALUABLE COUPON SAVE UP TO 32¢	GUARANTEED FRESH GRADE "A" LARGE EGGS 39 ¢ DOZ LIMIT 2
	WITH THIS COUPON AND \$5.00 PURCHASE OR MORE EXCEPT BEER, WINE OR CIGARETTES. COUPON VALID AT BI-LO THRU TUES. SEPT. 28, 1965. LIMIT ONE COUPON PER FAMILY.
VALUABLE COUPON SAVE UP TO 15¢	MICHIGAN MADE Pioneer Sugar 5 39 ¢ LB BAG LIMIT 1
	WITH THIS COUPON AND \$5.00 PURCHASE OR MORE EXCEPT BEER, WINE OR CIGARETTES. COUPON VALID AT BI-LO THRU TUES. SEPT. 28, 1965. LIMIT ONE COUPON PER FAMILY.

YOUR BETTER MARKET
 26058 SIX MILE ROAD 2 Blocks West of Beech
 OPEN DAILY 9-9 SUNDAYS 9-6
 COLD BEVERAGES By BOTTLE or CASE

SHOP and SAVE at either of these Conveniently located SPARTAN STORES
 We Reserve the Right to Limit Quantities
 Prices Effective Thru Tuesday, Sept. 28
 Member SPARTAN STORES

FIDLER'S
 ANN ARBOR ROAD at ANN ARBOR TRAIL
 OPEN DAILY 9-9 SUNDAYS 9-6
 COLD BEER AND POP TO GO
 MEATS CUT TO YOUR SPECIFICATIONS



CHOICE STEAK SALE!



Lean, savory and delicious choice steaks trimmed right and priced to save!

T-BONE STEAK \$1.09 | **SIRLOIN STEAK 99¢** | **ROUND STEAK 89¢ lb.**

HYGRADE **SLICED BOILED HAM 12-oz. Pkg. 99¢**
 SPARTAN **SLICED BACON lb. 69¢**
 YOUNG FRESH SLICED Beef Liver . . . **49¢ lb** SMOKED Pork Chops . . . **89¢ lb**
 LEAN BEEF Stew Meat . . . **79¢ lb** HERRUD Roasty Links . . **59¢ lb**

FRESH, GROUND HAMBURGER 39¢ lb.
 Our Low, Low, Price

20c OFF! **YUBAN INSTANT COFFEE 9-oz. Jar \$1.19**

PILLSBURY'S EXTRA LIGHT **PANCAKE MIX 2-lb. Pkg. 39¢**
 PILLSBURY "HUNGRY JACK" **PANCAKE MIX 2-lb. Pkg. 39¢**

SMUCKERS SYRUPS 12-oz. 39¢
 ★ Strawberry
 ★ Red Raspberry
 ★ Blueberry

APPIAN WAY **PIZZA 6c OFF 12½-oz. Pkg. 29¢**

TREESWEET SALE! ORANGE or GRAPEFRUIT JUICE 1-quart, 14-oz. Cans Only 39¢

PILLSBURY 20c OFF **GINGER BREAD MIX 14-oz. Pkg. 25¢**
 LIONS **SNAP-OFF BAGS 20's 39¢**
 CYPRESS GARDENS **GRAPEFRUIT SECTIONS 5 1-lb. Cans \$1.00**
 SPARTAN **STRAWBERRY PRESERVES 2-lb. Jar 59¢**
 FLUFF **MARSHMALLOW CREME 7½-oz. Pkg. 25¢**
EATMORE HONEY 3½-oz. Jar 79¢
 AJAX FLOOR & WALL **CLEANER 6c Off Pint 19¢** MAGIC **FINISH 1 Pt. 4-oz. 59¢**
 AJAX **CLEANSER 11 oz. Plastic 11¢** AJAX **LAUNDRY DETERGENT 10c Off. 3-lb. 2-oz. 59¢**

DOLE **PINEAPPLE JUICE 3 1-quart, 14-oz. Cans \$1.00**

LIBBY **PEAS or CORN With Butter 5 14¼-oz. Cans \$1.00**

PUFFS 2-ply ASSORTED TISSUES Assorted Colors or White 19¢ 200-ct. Box

SPARTAN **APPLE SAUCE 3-lb., 2-oz. 39¢**

PURINA **DOG CHOW 25-lb. Bag \$2.49**

PILLSBURY FLOUR 25 pound bag \$1.79

SPARTAN OLD FASHIONED **PEANUT BUTTER 3-lb. Jar 99¢**

MAXWELL HOUSE Regular or Drip Grinds **COFFEE 3 Pound Can \$1.99**

Cereal Special! **NABISCO TEAM FLAKES 11-oz. Box only 29¢**

4c Off! **LOG CABIN SYRUP 1-pint, 8-oz. Bottle 49¢**

HUNTS PEACHES SLICED or HALVES 5 1-lb., 13-oz. Cans \$1.00

DAIRY SPECIALS!
 BORDEN'S AMERICAN or PIMENTO **SLICED CHEESE 12-oz. Only 39¢**
 Borden or Sealtest **COTTAGE CHEESE 1-lb. Only 19¢** Borden or Sealtest **SKIM MILK ½ Gal. 29¢**
 PILLSBURY SWEET MILK or BUTTERMILK **BISCUITS 8-oz. Tube 7¢**

BAKERY SPECIALS!
 Save on "OVEN FRESH" **ITALIAN BREAD 1-lb., 4-oz. Loaf 29¢**
 NABISCO SANDWICH CREME **OREO COOKIES 1-lb. Pkg. 45¢**
 SUNSHINE KRISPY **CRACKERS 1-lb. Box 27¢**

BONUS BUY! MICHIGAN MADE PIONEER SUGAR 5-lb. Bag 39¢
 With \$5.00 Purchase. Beer, Wine, Tobacco not included. Coupon Offer Good thru Sept. 28, 1965. *Plus Deposit on Bottles.

Merchants Get Chance Now to Lease Trees

Merchants may now lease trees, just as they do trucks or other equipment. A "tree leasing" service is available to store-keepers who want to beautify their areas. Merchants may get together and sponsor a project, paying a small sum per tree per month plus an installation charge.

Water Trees Well for Survival

A few dollars added to the home water bill may save several hundred in valuable landscape plantings. During the extended dry period this summer, newly-planted trees are particularly threatened.

Plan Fall Feeding As Aid to Grass

No one has to argue these days about the benefits lawns derive from fertilizer. Yet many people get the urge to feed the lawn in spring, then forget it the rest of the year. Matter of fact, if there's any one season when fertilization is apt to do the most good, it is autumn.

tropical. The elite northern grasses, not the zoysias and bermudas, are greatest beneficiaries from feeding during cool weather. If your lawn is mainly Kentucky bluegrass, or if it includes fine fescues (such as Chewings, Illahee, Pennlawn, etc.) or if it is of Highland bent grass, autumn is the time to lay on the plant food.

Create Space In Basement

You can get a lot of mileage from a basement "rec room" if it's properly compartmentalized. The idea is to build in storage for every need, but in such a way that use areas are created and defined by built-ins.

Color Trend Has White Top Choice

What is the color of things to come, house-wise? If you're choosing a new color for the outside of your house, you may be interested in learning that white remains the most popular exterior color, but that other colors are gaining increased acceptance. Manufacturers of pre-finished mineral fiber siding, for example, report that white ac-

counts for about half the sales but in new construction and remodeling. They also report that beige, green and gray rank high in acceptance among the many primary colors and pastel shades now available. These colors actually are part of a tough acrylic plastic finish, which is bonded to the siding during manufacture.

Toads Are Help In Whipping Insect Problem

For a garden free of insect pests a toad is the cheapest insect killer you can get. Toads will be happy in a shady part of your garden if you provide homes of 8-inch clay pots with a small portion of their walls knocked out to provide an entrance. Since they absorb water through their skins, the toads will also need water proof clay saucers in their shady retreats.

Bench in Yard Ideal for Toys

If your yard is often cluttered with children's outdoor toys, a good autumn building project would be a storage bench. A storage bench is built like an old-time window seat—a box with hinged lid and a front that slants comfortably inward to allow tuck-back space for feet.

Here Are Hints on Pesticides

Speaking of chemical pesticides and safety, the Chemical Specialties Manufacturers Association urges gardeners to heed the following hints and reduce the number of accidents from misuse: Before opening and using any pesticide product, note all warnings on the label. Keep pesticides away from children and pets and store them in their original, tightly closed containers.

FENCE SAVE BUY DIRECT FROM FACTORY DISTRIBUTOR! GREAT LAKES FENCE 273-2900

SAT.-SUN. - SPECIAL Sat. 9 A.M.-5 P.M.; Sun. 1 P.M.-5 P.M. DWARF ALBERTA SPRUCE... \$1.95 JUNIPER ANDORRA PROCUMBENS NANA \$1.95... GREENWAY ACRES NURSERY

Gravel Required

When setting fence posts, be sure to place two inches of fine gravel in the bottom of each post hole to insure good drainage.

Kitchen-Patio Shelf Eases Serving Task

Here's a simple project to make entertaining on the patio easier than ever. Design your kitchen window as a pass-through. All that's needed is a serving counter built directly to the window so that refreshments can be lifted through the window and on to the counter.

Empty Egg Carton For Bulb Storage

An empty egg carton is fine for storing gladioli bulbs. Place one bulb to each compartment. Use only one color in each carton and label.

Blue Grasses Relish Rains of Autumn

Noted lawngresses, such as Kentucky bluegrass, fine fescues and the better bent grasses, mostly set seed in late spring which matures through summer. In nature such seed falls to the soil, and is "planted" before good autumn growing weather comes.

WHY NOT ADD A FIREPLACE TO YOUR HOME? IDEAL FOR... HOME or COTTAGE AUTHENTIC AMERICAN Franklin Stove Combining an efficient radiating heater and cheerful fireplace in an authentic period piece of furniture.

Wayne Jones Says:

Gardening is a delight in fall. Now is the best time to prepare for a garden of beauty next year. Our selection of unusual plantings is greater than ever.

FREE LANDSCAPING PLANS NEW HOME OWNERS! Bring in your home and lot dimension and a picture of your house. We will be happy to draw up a professional landscape plan for your home—with material priced to suit your pocketbook.

LARGE BUSHY "MUM" PLANTS loaded with buds \$1.00

SWEET SHRUB \$1.00 Brown flower, large light green foliage.

Small REDBUD \$1.95 TREES Newly Arrived BURNING BUSH \$5.95 Thick bushy, heavy grade. Smaller size available.

Newly Arrived Rhododendrons \$4.95 \$5.95 \$15.00 pink red pink An outstanding specimen for your garden in spring.

Top Size TULIP BULBS 10 for \$1 2nd Size TULIP BULBS Vibrant Colors 7c ea.

SAVE! 10% OFF on LUMBER SUPPLIES CASH & CARRY SPECIAL! ON ANY ITEM CASH AND CARRY FROM OUR STOCK regardless of quantity Present this ad, after we price your purchase.

Plymouth Nurseries, Inc. 38903 Ann Arbor Rd., 1 Mile S.W. of Ann Arbor Tr Open Daily 9-7; Sunday 10-6 464-1500

CUSTOM "FLAME LOGS" A Fireplace Fixture Most Natural GAS LOG... See Them in Operation! Priced \$44.95 From

AREA'S FINEST DISPLAY OF CUSTOM SCREENS FOR FIREPLACES QUALITY FIREPLACE TOOLS Custom Made Screens Up to 40" 19.88, Black or Brass 36 Special Finishes to Choose From

Complete Lawnmower Repairs Fast Service on All Models! TOWN 'n COUNTRY HARDWARE 27740 Ford Rd., Garden City, 3 1/2 Blks. W. of Inkster GA 2-2750

Harold Thomas Says... It's Fall Planting Time! You're invited to Come in and See Our New Fall Stock THE FINEST SELECTION IN WESTERN WAYNE COUNTY... EVERGREENS Shade Trees Flowering SHRUBS HAROLD THOMAS NURSERY 14925 Middlebelt Road GA 7-2888 Open Sundays

COMPLETE NURSERY STOCK SHRUBS EVERGREENS TREES BLUE GRASS NURSERY ALL STOCK GROWN ON LOCATION Fall Planting Sale SELECT AND TAG YOUR PLANTS IN THE FIELD 50-Lb. Bag 48c 16185 Newburgh Road 1/2 Way Between 5 and 6 Mile Open 8 A.M. to 5 P.M. 7 Days a Week

Looking for a new, used car? Stop at one of these dependable dealers today!

60—Automobiles	60—Automobiles	60—Automobiles	60—Automobiles	60—Automobiles	60—Automobiles
MERCURY, 1955, automatic, radio, heater, new battery, mufflers, good condition. One-owner, best offer. 425-3721.	FORD 1965 Custom 2-door, automatic, V-8, radio, heater, white wall tires, new car warranty \$1,955. Bill Brown Used Cars, 32222 Plymouth Rd. Phone 421-4598.	CHEVROLET 1957, 4 door, good condition, \$125, Call GA 2-0193.	1965 CHEVROLET Impala, 9-passenger station wagon, automatic with power, radio, heater, luggage rack, 5,000 miles, \$2,800. GA 3-3463.	FORD, 1964 9-passenger country sedan, power steering, cruiseomatic, radio, heater, luggage rack, 14,000 miles. By owner, 453-4536, Saturday or Sunday.	CORVAIR, 1963 Monza, 4-speed, black with red interior, radio, heater, \$1,050. 453-9326.
PONTIAC, 1959 Catalina 2-door, excellent condition, \$350; also Chevrolet, 1965 station wagon, good tires, runs good, \$35. GR 4-8573.	FORD 1958, 8 cylinder, station wagon, good motor, needs body work, \$100, GL 3-2134.	CHEVY II, 1963, radio, seat belts, snow tires, \$350. 421-9152.	OLDSMOBILE, 1964 F85 deluxe wagon, power, low mileage, very nice, must sell. Make offer. 421-3071.	FORD 1964 390, stick, 16,000 miles, excellent condition. GA 7-3189.	PONTIAC, 1964 Grand Prix, automatic, power steering and brakes, new tires, \$2,500. 476-2684.
PLYMOUTH, 1960 station wagon, 6-cylinder, stick, \$295. GA 7-9479.	ANGLIA, 1957, 2 door, like new, 16,000 miles, original finish, 30 m.p.g., reasonable. 453-3473.	MUSTANG, 1965, 289 V-8 engine, power, automatic, poppy red, black interior, like new. 453-7920.	CORVAIR, 1962 Monza 4-door, 3-speed transmission, new tires, \$700. 533-1596.	PLYMOUTH, 1969 station wagon, 6-passenger, 6-cyl., stick shift, as is, \$30. 476-2618.	1963 PLYMOUTH Fury 4-door, \$1,325, all power. GA 7-2929.
PONTIAC, 1955, good body, \$80. GA 7-9479.	CADILLAC, 1963, Sedan de Ville, Turquoise, matching interior, 6-way seat, 19,500 actual miles. One owner. Very clean. GA 1-9223.	CHEVY, 1956, 2-door, stick shift, \$75. GA 2-4695.	FORD, 1964 country sedan, 352 engine, cruiseomatic, low mileage, many extras, excellent condition. \$2,065. 474-5628.	CLEAN 1962 Ford country sedan station wagon, automatic, \$895. Call GA 7-9190, 30303 Plymouth Rd.	FORD, 1963 1/2 tudor Galaxie 500 hardtop, fastback 289, automatic, like new, white with red interior. GL 3-4238.
CHEVROLET, 1960 Biscayne 4-door sedan, \$595. GA 7-9479.	TRIUMPH, 1963 1/2, convertible, wire wheels, 3 hand radio, heater, white-walls, roll-up windows, great shape, perfect running. \$1,790. GA 7-7550, GA 5-5842.	FORD, 1959, automatic, radio, \$125. GA 1-5847 after 6 p.m.	FORD, 1965 station wagon 6-passenger country squire, engineer's car, low mileage, extras. FI 9-1499.	AUSTIN HEALY, '56, whitewalls, heater, 2 tops, side curtains, new paint, good condition, \$600. 453-2169.	1965 MUSTANG convertible with power top, 3-speed stick, 6,000 miles, new condition. 261-1059.
T-BIRD, 1964 hardtop, air conditioner, FM-AM radio, 3-way power, tinted glass, safety package, rear speaker, \$2,895. K2 4-2679.	THUNDERBIRD, 1964, 17,000 miles, \$2,550. Hardtop, rose-beige, all vinyl interior. Owner. 422-0996.	GALAXIE 500, 1965, 4 door hardtop, ivy green exterior, ivy gold interior, V-8, automatic, radio, heater, washers, 2-speed wipers, white walls. Warranty. KE 3-7531.	MERCURY, 1960 4-door, 383 cu. in. engine, cruiseomatic, power steering, radio, heater, clean \$325. GA 1-1248.	FORD, 1955 tudor sedan good condition. 453-6542.	CORVETTE 1965, 2 tops, excellent condition. 474-6064.
MUSTANG, 1963, red with white vinyl top; also 26" girls bike. GA 1-0762.	PLYMOUTH, 1959, 9 passenger wagon, Clean. \$225. Call GR 4-3865.	FALCON, 1962 station wagon, 4-door, radio, heater, automatic, very clean. \$675. Call H. Gilmore, 453-7100, ext. 223.			
MERCEDES BENZ, 1955, 4-door sedan, 4,000 miles on rebuilt engine. Fully restorable condition. 464-0750.	FORD, 1964 Galaxie 500, 4 door, power seats, steering, A1 condition. GA 5-0275.	FORD, 1959 Galaxie 2-door, V-8, Fordomatic, radio and heater, whitewalls, clean. \$375. 14716 Berwick, Livonia. 427-9494.			
MERCURY, 1956, 4 door sedan, automatic, radio, heater, good condition. \$150. 31729 Block, Garden City.					

Berry Pontiac has the Best Selection of New and Used PONTIACS

BERRY PONTIAC, INC.
 874 W. ANN ARBOR ROAD
 GL 2-2500 Plymouth, Mich. GL 3-0303

Transportation Specials

1960 Plymouth, radio, heater, automatic\$295
 1961 Plymouth, radio, heater, automatic\$495
 1962 Plymouth, 6 cylinder, stick shift\$595
 1961 Chevrolet 9 passenger wagon\$695
 1963 Dodge 6 cylinder, automatic\$995
 1963 Plymouth 6 cylinder, automatic\$995

\$250,000
 STOCK REDUCTION SALE
 108 of the cleanest one-owner used cars in Detroit. Selected reconditioned and guaranteed. 59-62 FORDS, Chevys, Pontiacs, Olds, Buicks, Compacts in A-1 condition will be sold at some price THIS WEEK. No down payment. NO APPLICATION TURNED DOWN. Lowest of finance rates in Michigan through our own source. Even at reduced prices all cars are guaranteed 2 years. Hurry, \$96,843 worth sold last week.

DAMERON CHRYSLER
 29301 Grand River
 GR 6-7900

PRICES ARE DOWN

RATIGAN'S BIG LOT
 30777 Plymouth - Livonia
 60 Cars to Choose From

'65 Ply. Fury Sd. . . . \$1895
 '63 Dodge 440 . . . \$1195
 '65 Ford 500 . . . \$1895
 '63 Olds. 88 H.T. . . \$1795
 '62 Valiant . . . \$695
 '62 Falcon . . . \$595

This Week Only
 New '65 Fury
 Automatic, radio, full factory equipment
\$2129

B. J. RATIGAN
 CHRYSLER-PLYMOUTH

Just around the corner . . .



THE NEW '66 FORD

We have to clean out our NEW and USED cars Now. Hurry in and take advantage of tremendous Price Reductions!

1965 FORD \$1695 Demos, all have automatic transmissions.	1964 FALCON . . . \$1595 Futura, 2 Dr. Hardtop, 8 Cylinder, automatic. Red with black vinyl interior, cannot be told from new.
1963 FAIRLANE . . \$795 4 Door, one owner.	1964 FORDS . . . \$1295 Many models to choose from.
1961 FORD \$595 Fairlane 500, V-8, auto. trans., low mileage.	1963 FORD \$1095 Pickup. Just like new.
1960 THUNDERBIRD \$995 2 Door Hardtop, Black Beauty. All Power.	1960 FORD \$295 2 Dr. Perfect 2nd car.
1964 RAMBLER . . . \$1595 Wagon, 660, Automatic Transmission, Radio and Heater. Like new.	1962 Ford Pickup \$975 8 Ft. Box. Sharp.
1961 PONTIAC . . . \$795 Catalina H.T., strait stick, V-8. Beautiful Burgundy.	1965 FALCON . . . \$1695 4 Door, Radio and Heater, 1,700 actual miles. (This is no misprint).
1963 FORD \$1495 Gal. 500 Convert., 352 engine, Cruiseomatic, power steering, RGH. Low mileage.	1962 FORD \$995 Galaxie, 8 Cylinder, Cruisomatic, Radio and heater. One owner.
	1963 COMET \$995 4 Door. Like new.

LEO CALHOUN

NEW CAR DEPT. GL 3-1100 470 S. MAIN PLYMOUTH, MICHIGAN USED CAR DEPT. GL 3-1730

TENNYSON

Is Why...Chevy's The Buy!
OK USED CAR SPECIALS

1964 CHEVROLET Impala, 4 door hardtop, 8 cylinder, automatic, power steering, radio, heater, white walls, beautiful condition. \$1995	1964 CHEVROLET Impala, coupe, 8 cylinder, automatic, power steering, radio, heater, white-walls, 2 to choose from. \$1950
1960 FORD, 2 door, 8 stand- \$275 ard, radio, heater	1964 CHEVROLET Bel Air 4 door, 8 \$1795 cylinder, power steering, automatic, radio, heater, white walls, maroon finish. Sharp
1964 CHEVROLET Bel Air 4 door, 6 \$1595 cylinder, automatic, beige finish, like new	1961 PONTIAC Catalina convertible, 8 \$1250 cylinder, automatic, power steering, radio, heater, white walls, maroon, sharp
1963 CHEVROLET Impala, 2 door hard- \$1750 top, 8 cylinder, automatic, power steering, power windows, radio, heater, white walls, white finish. Extra clean	1961 CORVAIR 2 door automatic, Black \$795 finish, like new, heater and white walls
1962 CORVAIR Monza 4 door, auto- \$995 matic, radio, heater, white walls, black finish, very nice	1962 MERCURY convertible, 8 cylinder, \$1195 4 speed, full power, radio, heater, white finish, sharp
1964 VALIANT 2 door deluxe, 6 cylin- \$1295 der, standard, radio, heater, white walls	1962 CHEVY II, 4 door station wagon, \$995 radio, heater, white walls, red finish, sharp
1964 RAMBLER American, 2 door, stand- \$1195 ard transmission, heater, very clean	1963 CHEVY II Nova 4 door, automatic, \$1275 power steering, radio, heater, white walls, extra nice
1963 PONTIAC, Grand Prix, 2 door hard- \$1895 top, automatic, power steering, power brakes, very sharp	1963 CHEVROLET Impala coupe, 8 auto- \$1750 matic, power steering, radio and heater maroon finish. Like new
1961 CHEVROLET, Bel Air, 4 door, sta- \$850 tion wagon, 6 cylinder, standard, tan finish	1961 CHEVROLET 2 door, 6 cylinder, \$650 standard shift, Blue
1963 CORVAIR, 2 door, heater, white \$895 walls, standard transmission, excellent buy	1963 CORVAIR Monza convertible, auto- \$1450 matic, radio, heater, white walls, Red finish, sharp
1960 CHEVROLET 4 door station wagon, \$650 6 standard transmission, radio, heater	1962 CHEVROLET Convertible, 8 cylin- \$1395 der, automatic, power steering, radio, heater, white walls, red finish
1964 CHEVROLET Bel Air 4-door wagon, \$1895 V-8, automatic, turquoise	1962 CORVAIR Monza, 4 door, auto- \$995 matic, radio, heater, white walls, turquoise finish, excellent 2nd car

MANY MORE FOR YOUR SELECTION

OK Tennyson OK
 CHEVROLET
"SEE THE GENTLEMEN FROM TENNYSON"

32570 PLYMOUTH ROAD LIVONIA TEL. 535-6770, 425-6500

LAST CALL ON '65 MODELS!

'65 IMPALA 2-dr. Hardtop V-8 engine, Powerglide transmission, air conditioning, power steering, power brakes, vinyl roof, radio with dual speaker, whitewall tires, wire-wheel covers, plus many other extras.	'65 IMPALA 4-dr. Hardtop V-8 engine, Powerglide transmission, air conditioning, power steering, power brakes, vinyl roof, radio with rear speaker, whitewall tires, wire-wheel covers, plus many other extras.	'65 IMPALA 9 Pass. Wagon Loaded, including air conditioning. LIST PRICE \$4,690!! SAVE \$1400	'65 CORVAIR 2-dr. Hardtop Including full factory standard equipment! \$70 Dn. - \$49.96 mo.	'65 PICK-UP 1/2 Ton 8 ft. Styleside body!! \$59 dn. - \$59 mo.
--	--	---	---	--

1962 GREENBRIER . . . \$895 4-speed, radio, heater, white walls.	1965 CHEVROLET . . \$195 Dn. Convertible, V-8, stick shift, radio, heater, white walls, new car warranty, low low mileage.	1962 PONTIAC \$1295 4-door wagon; power steering, power brakes, V-8, automatic, radio, heater, white walls.	1964 BEL AIR \$1895 4 door, 250 engine, 4 speed, radio, heater, white-walls.
1964 STUDEBAKER . . \$1195 1/2-ton pick-up, 6-cylinder, standard transmission, radio, heater, excellent condition.	1964 CHEVELLE . . . \$1845 2-door hardtop, V-8, automatic, radio, heater, white walls. Like new.	1962 PONTIAC \$1445 Catalina Convertible, V-8, automatic, power steering and brakes, radio, heater, whitewalls.	1964 BUICK \$1795 Special 2 door, V-8, automatic, power steering and brakes, radio, heater, whitewalls. Sharp.
1963 FORD \$895 Fairlane, 8-cylinder, stick shift with overdrive, radio, heater, white walls.	1961 PONTIAC \$795 4-door, V-8, automatic, radio, heater, white walls, power steering, power brakes.	1964 IMPALA \$2195 2 door hardtop with 250 engine, Powerglide, power steering, brakes and windows, air conditioning, radio, heater.	1964 CORVAIR \$1195 2 door, standard transmission, radio, heater, white-walls. 2 to choose from —

ALLISON

CHEVROLET

199 PLYMOUTH ROAD PLYMOUTH, MICHIGAN
 GL 3-0990 WO 3-3368

IMPALA - BISCAYNE - CHEVELLE - CHEVY II - CORVAIR - CORVETTE

A SUPER MARKET THAT IS JUST A LITTLE BETTER.



Our Friendly, Competent Meat cutting experts are always on duty



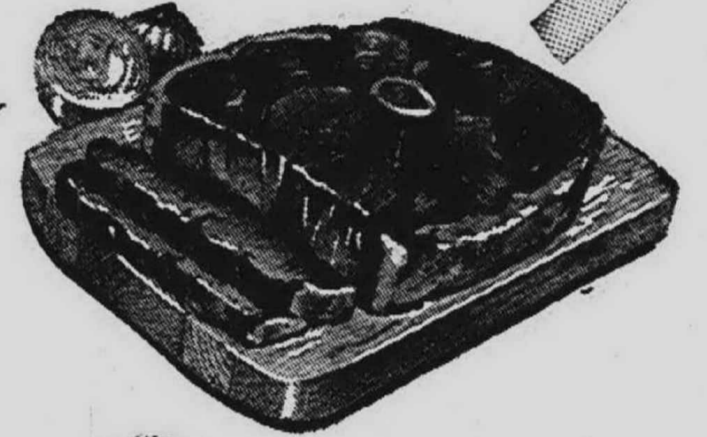
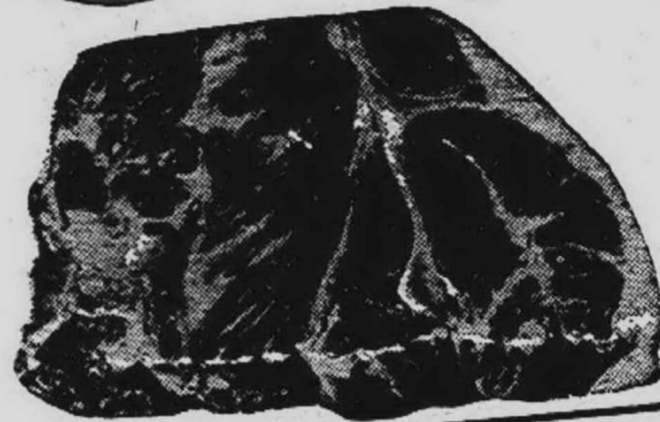
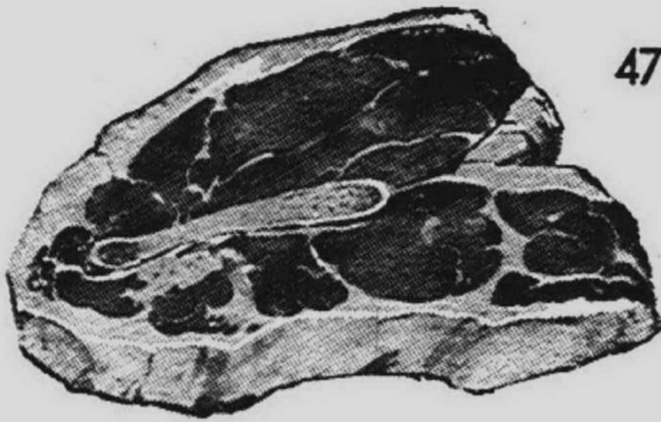
All Stop and Shop Meat Is Cut to Customer's Specifications

Select your Meat the same way your Mother did



Stop & Shop

470 FOREST AVE. PLYMOUTH



"TRIPLE R FARMS" U.S.D.A. CHOICE

Steak Sale

WE RESERVE THE RIGHT TO LIMIT QUANTITIES

- Lean, Tender, Boneless & Cubed Port Cutlets 79¢ lb.
- Lean, Sliced Boiled Ham 99¢ lb.
- Tender, Sliced Beef Liver 39¢ lb.
- Lean, Meaty, Tender Pork Steaks 59¢ lb.
- Herrud's All Beef Franks 1-lb. Pkg. 69¢ lb.
- Campbell Pork & Beans 1-lb. Can 11¢
- Strained Baby Food Gerbers 12 Jars \$1.00
- Dole, Delicious Pineapple Juice Quart, 14-oz. Can 29¢
- Hair Spray Aqua Net 13-oz. Can 49¢
- Banquet-Frozen Pot Pies 8-oz. Pkg. 15¢

"Triple R Farms" U.S.D.A. Choice

ROUND STEAK 89¢ lb.

Tender, Delicious!

"Triple R Farms" U.S.D.A. Choice Ground Round Steak 89¢ lb.



"Triple R Farms" U.S.D.A. Choice

Sirloin Steak 99¢ lb.

"Triple R Farms" U.S.D.A. Choice

Chuck Steaks 69¢ lb.

"Triple R Farms" Lean, Tender

Cube Steaks 99¢ lb.

Star-Kist TUNA 6 1/2-oz. Can 24¢

"Triple R Farms" Fresh, Delicious POTATO CHIPS 14-oz. Bag 49¢

Gold Medal All Purpose FLOUR 25 lb. Bag \$1.89

KRAFT'S PHILADELPHIA CREAM CHEESE 8-oz. Pkg. 27¢

OPEN MONDAY THRU SATURDAY 9 A.M. TO 9 P.M.

Prices Effective Wednesday, September 22 thru Tuesday, September 28, 1965

- Nabisco Ritz Crackers 1-lb. Box 39¢
- Hekman's Club Crackers 1-lb. Box 35¢
- Birdseye Frozen Peas 2 10-oz. Pkgs. 29¢
- Hygrades Corned Beef 12-oz. Can 39¢
- Jiffy Biscuit Mix 40-oz. Box 35¢

Peeled & Deveined FANCY SHRIMP 1-lb. 8-oz. Bag \$1.99



AT STOP & SHOP YOU GET GOLD BELL GIFT STAMPS