

















# YESTERDAY --- TOMORROW.. THE *Lowest* FOOD PRICES

PRICES EFFECTIVE WEDNESDAY SEPT. 30  
THRU TUESDAY, OCT. 6, 1964.

*Bi-Lo Selected Beef*

# RIB STEAK

# 79¢

LB

BI-LO SELECTED BEEF  
**SIRLOIN STEAK**..... LB **89¢**

BI-LO SELECTED BEEF  
**ROUND STEAK**..... LB **89¢**

BI-LO SELECTED BEEF—CUBE OR  
**T-BONE STEAK**..... YOUR CHOICE LB **99¢**

BI-LO SELECTED BEEF—BLADE CUT  
**CHUCK STEAK**..... BONELESS CHUCK ROAST LB 79¢ LB **59¢**

BI-LO SELECTED BEEF—POT ROAST CUT  
**CHUCK ROAST**..... CHOICE CENTER CUT LB 59¢ LB **49¢**

BI-LO SELECTED BEEF—BITE SIZE  
**STEWING BEEF**..... LEAN SOUP MEAT LB 25¢ LB **79¢**

*Always Fresh*

# GROUND HAMBURGER

3-LB PKG  
OR MORE

# 39¢

LB

## SHOPPING AT BI-LO IS LIKE GETTING

- TIDY HOUSE**  
**SANDWICH BAGS**..... 150-CT PKG **35¢**
- PLASTIC WRAP**  
**HANDI WRAP**..... 100-FT ROLL **25¢**
- EMPRESS**  
**ALUMINUM FOIL**..... REG. SIZE BOX **25¢**
- ASSORTED COLORS SWANEE**  
**FACIAL TISSUE**..... 400-CT BOX **15¢**
- WHITE OR COLORED**  
**SCOTT TOWELS**..... 120 SHEET ROLL **19¢**
- ALL PURPOSE**  
**WESSON OIL**..... QT BTL **44¢**
- BUTTERFIELD SWEET**  
**POTATOES**..... NO. 3 CAN **23¢**
- ALL FLAVORS RINGO**  
**FRUIT DRINKS**..... 46-OZ CAN **22¢**
- BAUER BRAND**  
**TOMATO JUICE**..... 46-OZ CAN **23¢**
- ALL VARIETIES JIFFY**  
**CAKE MIXES**..... 9-OZ PKG **12¢**
- MICHIGAN MADE—FREESTONE**  
**PEACHES**..... 2½ CAN **23¢**
- REAL PRUNE**  
**PRUNE JUICE**..... 32-OZ BTL **29¢**
- ROSEDALE SLICED HAWAIIAN**  
**PINEAPPLE**..... 14-OZ CAN **21¢**
- APPLE OR CHERRY WILDERNESS**  
**PIE FILLING**..... 21-OZ CAN **25¢**

- ASSORTED COLORS**  
**Northern Tissue** 4 ROLL PKG **28¢**
- MOTHERS DELIGHT PEELED**  
**TOMATOES**..... 303 CAN **12¢**
- SILVER FLOSS**  
**SAURKRAUT**..... 2½ CAN **17¢**
- BROOKS MEXICAN STYLE**  
**CHILI BEANS**..... 15-OZ CAN **15¢**
- STRAINED VARIETIES CLAPP'S**  
**BABY FOOD**..... 3 JARS **23¢**
- NEW PACK MOTT'S**  
**APPLESAUCE**..... 25-OZ JAR **25¢**
- HORMEL**  
**CHILI CON CARNE**..... 15-OZ CAN **29¢**
- PENN. DUTCH—PIECES & STEMS**  
**MUSHROOMS**..... 4-OZ CAN **19¢**
- CHUNK TUNA**  
**CHICKEN O' SEA**..... 5-OZ CAN **25¢**
- CINDY LIQUID**  
**DETERGENT**..... 32-OZ BTL **39¢**
- PIONEER**  
**PURE SUGAR**..... 5 LB BAG **48¢**
- 10X, LIGHT BROWN OR DARK BROWN**  
**DOMINO SUGAR**..... LB PKG **15¢**
- SPECIAL LABEL**  
**RINSO BLUE**..... KING SIZE **99¢**
- TREND**  
**SOAP POWDER** 2 BOXES **35¢**

- SPECIAL LABEL—PILLSBURY**  
**CAKE MIXES**..... PKG **29¢**
- CAMPBELL'S**  
**TOMATO SOUP**..... NO. 1 CAN **10¢**
- ORCHARD PRIDE**  
**APPLESAUCE**..... 300 CAN **11¢**
- FRANCO AMERICAN**  
**SPAGHETTI**..... 15½-OZ CAN **11¢**
- CAMPBELL'S**  
**PORK & BEANS**..... 16-OZ CAN **11¢**
- RECIPE PINK**  
**DEMING SALMON**..... LB CAN **49¢**
- MELL-O RIPE**  
**PEAR HALVES**..... 2½ CAN **25¢**
- SLICED OR HALVES**  
**Hunt's Peaches**..... 2½ CAN **23¢**
- BI-LO LOW PRICE**  
**SCOTT TISSUE**..... 1000 SHEET ROLL **12¢**
- HILLS BROS.**  
**COFFEE**..... REG. OR DRIP 2 LB CAN **1.47**
- WHOLE KERNEL**  
**STOKELY'S CORN**..... 303 CAN **15¢**
- PERMANENT ANTI-FREEZE**  
**PRESTONE**..... NONE SOLD TO DEALERS GAL CAN **1.59**
- MACARONI & CHEESE**  
**KRAFT DINNER**..... PKG **15¢**
- CONTADINA**  
**TOMATO PASTE**..... 6-OZ CAN **10¢**



**TODAY....  
ALWAYS...  
IN TOWN 7 DAYS A WEEK!**

**STORE HOURS**  
MON. THRU FRI. 9A.M. TO 9P.M.  
SAT. 8A.M. TO 9P.M.  
OPEN SUNDAY  
10A.M. TO 6P.M.  
SHELDEN SHOPPING  
CENTER  
PLYMOUTH & FARMINGTON ROAD

*Choice Center Cut Rib*

**PORK  
CHOPS**

**CHOICE  
LOIN CUT  
79¢  
LB**

**69¢  
LB**

SWIFT'S EVERWEET  
**SLICED BACON** 2 LB PKG 97¢ LB PKG 49¢

BI-LO SELECTED BEEF—BONELESS AND ROLLED  
**RUMP ROAST** LB 89¢

BI-LO SELECTED BEEF—SHOULDER OR  
**ENGLISH ROAST** YOUR CHOICE LB 69¢

FRESH SLICED  
**BEEF LIVER** LB 39¢

FARM FRESH WINGS OR  
**Turkey Drumsticks** YOUR CHOICE LB 29¢

6 VARIETIES—GLENDALE SLICED  
**LUNCHEON MEATS** 1-LB PKG 49¢

*Hickory Smoked Shank Portion*

**SMOKED  
HAMS**

**FULL  
BUTT  
PORTION  
47¢  
LB**

**37¢  
LB**

**A PAY RAISE!**

U.S. NO. 1—ALL PURPOSE MICHIGAN

**POTATOES**  
20 LB BAG 69¢

U.S. NO. 1—JONATHON OR  
★ **MACINTOSH APPLES** 8 LB BAG 69¢

U.S. NO. 1—GOLDEN OR RED  
★ **DELICIOUS APPLES** 6 LB BAG 69¢

GUARANTEED FRESH-MEDIUM

**GRADE "A"  
EGGS** 3 DOZ 99¢

DELICIOUS  
★ **BORDEN'S HALF N' HALF** QUART CARTON 39¢

LIGHTLY SALTED  
★ **LAND O' LAKES BUTTER** LB 69¢

A \$5.00 PURCHASE ENTITLES YOU TO ALL COUPON ITEMS BELOW!



VALUABLE COUPON

SPECIAL LABEL—SHORTENING

**SWIFTNING**  
3 LB CAN 29¢  
LIMIT 1

WITH THIS COUPON AND ADDITIONAL \$5.00 PURCHASE, EXCLUDING BEER, WINE OR CIGARETTES. COUPON VALID AT BI-LO THRU TUES., OCT. 6, 1964. LIMIT ONE COUPON PER FAMILY.



VALUABLE COUPON

SPECIAL LABEL

**ROMAN BLEACH**  
29¢  
PLASTIC GALLON  
LIMIT 1

WITH THIS COUPON AND ADDITIONAL \$5.00 PURCHASE, EXCLUDING BEER, WINE OR CIGARETTES. COUPON VALID AT BI-LO THRU TUES., OCT. 6, 1964. LIMIT ONE COUPON PER FAMILY.



VALUABLE COUPON

BORDEN'S SHERBET OR GLACIER CLUB

**ICE CREAM**  
29¢  
1/2-GAL CTN  
LIMIT 1

WITH THIS COUPON AND ADDITIONAL \$5.00 PURCHASE, EXCLUDING BEER, WINE OR CIGARETTES. COUPON VALID AT BI-LO THRU TUES., OCT. 6, 1964. LIMIT ONE COUPON PER FAMILY.

FROZEN -ALL VARIETIES

**BANQUET  
POT PIES**  
PKG 15¢

SAVE 10¢ BONNIE BAKED

**APPLE  
PIE**  
LARGE FAMILY SIZE 39¢

ALL VARIETIES  
**Morton Dinners** 11-OZ PKG 39¢

BONNIE BAKED—SLICED SAVE 6¢  
**Raisin Bread** 16-OZ LOAF 19¢

















# Wonderland Sets Three-Week Party

Wonderland is five years old! And a gala, three-week colorful birthday celebration will get underway Sunday, Oct. 3, to mark the event. Musical events, contests and displays will mark the anniversary of western Wayne County's first regional shopping center, and highlight of the celebration will be the award of a 1965 Mustang.

A "punt, pass and kick contest" will get things rolling Saturday. Co-sponsored by the Ford Motor Co., the contest is expected to draw hundreds of youngsters from throughout the suburban area to the National Football League event.

Also on Saturday an oil painting, created by a local artist, will be awarded as the climax to a current art exhibit in Wonderland's civic room.

Timed to coincide with the opening game of the World Series, color television sets will be placed in a special tent at Wonderland beginning Oct. 7 to provide color telecasts of the games. Visitors will be able to register for a color TV to be awarded at the end of the celebration.

Starting Monday, Oct. 12, Wonderland will present a two-week showing of 1965 Ford automobiles, along with special displays of experimental "cars of tomorrow."

The first amateur talent contest ever staged in this area will be scheduled also on Monday, Oct. 12. Open to youngsters of high school age, the contest will be jointly sponsored by Montgomery Ward and will include cash prizes and a chance to win a three-week European vacation.

A three-day run of "Motors and Music", Wonderland's second annual stage show, will open Thursday, Oct. 15. The "Ford Galaxy of Stars", a musical troupe including radio and TV personalities, will be featured in this year's show.

On Saturday, Oct. 17, final selection of winners in the talent contest for youth will be chosen, and a drawing to select the winner of the color television set.

Highlight of the day will be a 250-pound birthday cake party, with members of the audience for the final performance of "Motors and Music" sharing the huge cake.

Climaxing the big celebration will be presentation of a 1965 Ford Mustang on Saturday, Oct. 24, during appearances by members of the Detroit Lions football team. Entry blanks for the prize will be available at Wonderland Merchants' Council member stores.

## Northville State Hospital Plans 12th Patients Fair

Northville State Hospital will present its 12th annual Patients Fair on Tuesday and Wednesday, Oct. 6 and 7, culminating more than three months of planning by committees and sponsoring groups.

In order that the 1,400 patients can go into the hospital's Fair area, each for a two-hour period, and so that the 800 shut-in patients can be reached by volunteers who will be bringing the Fair's food and excitement to them, much of the hospital's daily work will be reduced to a minimum.

Chairman Louis Scholdt, director of community relations for the hospital, has been aided by the following committee heads in planning the giant program:

Booths, Wallace Westfield, Northville; prize purchasing, Mrs. Louis Pearman, 29608 Hillbrook, Livonia; props, Monte Mohr, of Redford Township; hospitality, Mrs. Byron Champion, of Plymouth; entertainment, Sol Goldfarb, 31650 Foville, Livonia; shut-ins, Mrs. Wanna Thomas, 9960 Hemingway, Redford Township.

As Eddie Schick and his orchestra provide the musical background, the patients will move along the 17 booths, testing their skill and luck with the various games.

The following will provide the necessary 150 volunteers for the event: Coventry Gardens Association of Livonia, Mrs. Nita Fowler; Hudson's Northland Handbag department, Mrs. Richard Dunham, Redford Township; Plymouth Birthday Ladies, Mrs. Vivian Champion; Plymouth Friends of Northville State Hospital, Mrs. Robert Fisher; Plymouth Women's Club, Mrs. Bruce Richard; Plymouth Vending Co., Carl Hopkins; Red Cross Gray Ladies, Mrs. Wanna Thomas; and Xi Beta Pi Chapter of Beta Sigma Phi, Mrs. Mercy Lee of Redford Township.

Should it rain, the Fair will be postponed to a later date. On Tuesday, Mrs. Louis Pearlman, of Livonia, will be honored at Volunteer of the Week by the United Community Services of Metropolitan Detroit.



A PRETTY LIVONIA COED, Janet Pierce, reigned as one of four queens during the 1964 Little Brown Jug horse race at Ohio's Delaware County Fairgrounds Thursday. An Ohio Wesleyan University senior, Janet is the daughter of Mr. and Mrs. Donald A. Pierce, 27620 Terrence. She majors in physical education.

### EXCEPTIONAL SAVINGS, NOW, DURING BERRY'S FALL SALE

**FRUIT and SALAD SET!** With This Coupon 7-PC. IMPORTED Oven and Craze Proof CHINA

Beautifully HAND PAINTED Gorgonzola Colored Fruit Design

**ONLY \$1**

LIMIT One Set to A Customer

YOU Get a Large Bowl, 2-4 Serving Plates, a Wooden Fork and Serving Spoon

**DON'T DELAY! WE HAVE ONLY A LIMITED QUANTITY**

**ITALIAN PROVINCIAL DAVENPORT \$99<sup>88</sup>**

**OCCASIONAL TABLES**  
 Large Group of Colonial & Modern TABLES 14.<sup>88</sup>

Regent Bathroom Scales Reg. 5.<sup>95</sup> **3.<sup>88</sup>** With This Coupon

All Our NAME BRAND BEDDING at DISCOUNT PRICES

STUDENT DESK **29.<sup>88</sup>**

5-PC. DINETTE Chrome or Bronzetone **29.<sup>88</sup>**

# BERRY'S DISCOUNT FURNITURE

Division of Berry's Home Supply  
 25950 W. 6 MILE West of Beech KE 2-5933

TOUCHDOWN SAVINGS TOUCHDOWN SAVINGS TOUCHDOWN SAVINGS TOUCHDOWN SAVINGS TOUCHDOWN SAVINGS TOUCHDOWN SAVINGS

## LINDY BERRY SCORES ANOTHER TOUCHDOWN

AGAIN AND AGAIN BERRYS BIG LEAGUE BUYING POWER SCORES ANOTHER TOUCHDOWN... BY PASSING THE SAVINGS ON TO IT'S CUSTOMERS. THE LOUDER THE CHEERS, THE LOWER THE PRICES, STOP—SHOP BERRY'S—AND SAVE.

### PRESTONE ANTI-FREEZE \$1.55

Gallon Can

### MAJOR APPLIANCES

|  |                               |                   |
|--|-------------------------------|-------------------|
| GENERAL ELECTRIC REFRIGERATOR          | 12 Cu. Foot                   | 168 <sup>00</sup> |
| PHILCO REFRIGERATOR                    | 1-Door Auto. Defrost          | 188 <sup>00</sup> |
| FRIGIDAIRE REFRIGERATOR                | 2-Door Auto. Defrost          | 248 <sup>00</sup> |
| GENERAL ELECTRIC UPRIGHT FREEZER       | 12 Cu. Foot                   | 168 <sup>00</sup> |
| RCA WHIRLPOOL UPRIGHT FREEZER          | 17 Cu. Foot                   | 209 <sup>00</sup> |
| RCA WHIRLPOOL-16 CU. FT. CHEST FREEZER |                               | 188 <sup>00</sup> |
| PHILCO CHEST FREEZER                   |                               | 158 <sup>00</sup> |
| LOW BOY STYLING 23" MOTOROLA TV        |                               | 159 <sup>00</sup> |
| WALNUT LOW BOY 23" DUMONT TV           |                               | 188 <sup>00</sup> |
| CURTIS MATHES COMBO                    | 23" TV-Stereo A.M. F.M. Radio | 248 <sup>00</sup> |

LOW SUDS DETERGENT \$6.<sup>95</sup>

50-Lb. Ctn.

THOR 3/8" ELECTRIC DRILL \$9.<sup>95</sup>

BERRY BETTER BUY

HOT WATER TANK 39.<sup>88</sup>

30 Gal. 10 Yr. Glass Lined

FAST EASY CREDIT

RID CRABGRASS KILLER 3.<sup>95</sup>

10-6-4-50-Lb. FERTILIZER 1.<sup>68</sup>

5-Foot STEP LADDER 2.<sup>95</sup>

Ironing Board PAD & COVER 59.<sup>c</sup>

Insulated Hunting BOOTS 4.<sup>95</sup>

POWER MOWER CLEARANCE AT COST AND BELOW

### FOR EASIER WASHDAYS

|                                     |  |                   |
|-------------------------------------|--|-------------------|
| RCA WHIRLPOOL AUTO. WASHER          | Family Size "BBB"  | 138 <sup>00</sup> |
| SPEED QUEEN WASHER                  | 3 Wash Water Selections 2-Speeds 2-Rinse                     | 189 <sup>90</sup> |
| GENERAL ELECTRIC AUTO. WASHER       | 12 lb. Tub Load 3 Cycles 3 Water Levels 3 Wash Temp. 2 Rinse | 168 <sup>00</sup> |
| SPEED QUEEN WRINGER WASHER          |  | 78 <sup>00</sup>  |
| RCA WHIRLPOOL GAS DRYER             | 2 Cycles inc. Wash-'n'-Wear                                  | 128 <sup>00</sup> |
| SPEED QUEEN GAS DRYER               | 3 Heat Selections  | 158 <sup>00</sup> |
| A REAL MONEY SAVER FRIGIDAIRE DRYER |  | 139 <sup>00</sup> |

|                         |                   |                   |                   |
|-------------------------|-------------------|-------------------|-------------------|
| Shetland ELECTRIC BROOM | 15. <sup>98</sup> | G. E. CLOCK RADIO | 12. <sup>88</sup> |
| G. E. 2-SLICE TOASTER   | 11. <sup>95</sup> | G. E. AM RADIO    | 9. <sup>98</sup>  |

|                                     |                           |                             |                           |
|-------------------------------------|---------------------------|-----------------------------|---------------------------|
| ACME Latex Wall PAINT Custom Colors | Gal. Can 3. <sup>95</sup> | SUPER KEM-TONE Fresh Stocks | Gal. Can 3. <sup>98</sup> |
|-------------------------------------|---------------------------|-----------------------------|---------------------------|

## 21" COLOR TV

|                    |               |                  |                          |
|--------------------|---------------|------------------|--------------------------|
| RCA Walnut Low Boy | G.E. Mahogany | ZENITH Hand Wire | Admiral Berry Better Buy |
| \$395              | \$298         | \$398            | \$378                    |

|                           |                  |                              |                  |
|---------------------------|------------------|------------------------------|------------------|
| G. E. Steam & Dry IRON    | 7. <sup>98</sup> | Schick MEN'S SHAVER          | 7. <sup>95</sup> |
| BVI Heavy Duty CAN OPENER | 9. <sup>95</sup> | Universal 8-Cup COFFEE MAKER | 8. <sup>95</sup> |

Hoover UPRIGHT VACUUM 42.<sup>88</sup>

Hoover VACUUM BAGS

A Berry Better Buy 51.<sup>c</sup>

# BERRY'S HOMESUPPLY

BERRY'S STORE and WAREHOUSE OUTLET  
 27419 JOY ROAD at INKSTER ROAD  
 FURNITURE OUTLET — 25950 W. 6 Mile, Nr. Beech

KE 5-5060 or GA 1-1717  
 Open 9:30 a.m. to 9 p.m. Daily  
 Closed Sunday





























# Looking for a new, used car? Stop at one of these dependable dealers today!

**58—Trucks**  
FOR SALE — 2-wheel trailer. \$65.00. Call GR 4-0451.

**59—Mobile Homes**  
ATTENTION Hunters — Used camper, \$295. GA 7-9190, 30303 Plymouth Rd.

VAGABOND. 20x46. Sacrifice. Draperies, all Whirlpool appliances, washer, dryer, refrigerator, 14 cubic ft., no frost. New furnace gun-type, electric stove, garbage disposal, 40 ft. fiberglass awning, beautiful shrubbery, patio, corner lot, 49401 Pine location. 14401 Ridge Road, Oak Hven. GL 3-1248.

**59—Mobile Homes**  
1962 VAN DYKE—House trailer. 50x10. \$3,200. 427-8274.

**59—Mobile Homes**  
1959 15-FT. travel trailer, sleep 6, gas stove, refrigerator and lights, electric brakes, new tires and hitch. \$725. KE. 5-3094.

LAYTON 20' Travel Trailer, 3 months old, fully contained, sacrifice, leaving state. \$1,950. 421-8743.

**59—Mobile Homes**  
1961 HOLIDAY Rambler — 18-foot, self-contained, excellent condition, hitch, brakes, \$1,775. 728-4691.

TRAVEL TRAILER, Airstream 24' twin bed. Very clean, good condition. 23890 Gill Rd., near Grand River, Farmington.

## Harold Dietrich, Inc.

One of the Oldest Buick Dealers in Michigan  
We have a fine used car operation.  
About 50 very clean and very good cars to pick from.

**Lots of One Owners and Some Factory Official Cars**

**USED CAR LOT — 33173 MICH. AVE. WAYNE PA 1-3775**

- 10—1964 BUICK demonstrators, several different series, very large savings. All with new car guarantee. Plus 45 NEW '64 BUICKS.
- 1962 RAMBLER Wagon, automatic transmission, \$1,195 radio, heater
- 1962 CHEVROLET II, 4-Door, auto., R./H. \$895
- 1960 PONTIAC Catalina, 4-Door Hardtop, auto., R./H. \$895
- 1960 BUICK Invisia Convertible, auto., R./H., P./S., P./B. \$1,095
- 1963 BUICK Le Sabre, auto., R. and H. power steering and brakes \$2,295
- 1961 FALCON Wagon, R., H., Std. Trans. \$595
- 1963 FORD 2-Door Fairlane. Automatic, radio, heater. Good buy at only \$1,595
- 1961 FALCON Wagon, real nice \$595

**THE BUY OF THE WEEK**  
1959 VOLKSWAGEN BUS, heater, real sharp for only \$595

**WE LEASE ALL MAKES NEW CARS**  
• • •  
**1 YEAR WRITTEN GUARANTEE ON OUR USED CARS**  
**Harold Dietrich, Inc.**



### COME OUT AND VISIT TO DAY!

|   |   |
|---|---|
| <b>1964 T-BIRD</b><br>Convertible. Full power. 1,800 actual miles \$3,995   | <b>1963 FORD</b><br>Galaxie, a real nice buy at \$2,095   |
| <b>1963 GALAXIE</b><br>500 convertible, V-8, auto., radio, heater \$2,095   | <b>1964 FORD</b><br>4-dr. station wagon, 8-cyl., radio, heater, \$2,295                             |
| <b>1961 COMET</b><br>4-door station wagon, auto., radio, heater, whitewalls, rack on top, electric tailgate \$995                           | <b>1964 CHEVROLET</b><br>Nova, 4-dr., 6-cyl., R.&H., standard shift \$1,795                         |
| <b>1963 FORD</b><br>Galaxie, 2-dr. hardtop, radio, heater, auto-matic, 8-cyl. \$1,895   | <b>1963 T-BIRD</b><br>2-dr. hardtop, radio and heater, automatic, power steering and brakes \$2,795 |
| <b>1959 FORD</b><br>2-Dr., 6, stick, radio, heater, only \$345  | <b>1963 FORD</b><br>Fairlane 500, 2-dr., radio and heater, auto-matic, 8-cyl. \$1,695               |
| <b>1964 FORD</b><br>Galaxie 500, 4-dr., V-8, auto., P.S., P.B., R&H, w/walls, company demo, 2 to \$2395 choose from, only New car warranty. | <b>1962 T-BIRD</b><br>Hardtop, radio and heater, automatic, power steering and brakes \$2,295       |

**BILL BROWN**  
**USED CAR LOT**  
**32222 PLYMOUTH ROAD**  
421-4598 KE 2-0900

## PUBLIC AUCTION SALE

SALE BEGINS PROMPTLY 11:00 A.M.  
A DETROIT BANK REPOSSESSION SALE

### TAKE OVER PAYMENTS WITH ABSOLUTELY NO MONEY DOWN

Choose from Almost 200 Cars Such as these:

| Automobile  | Balance Due | Pay Weekly | Automobile                               | Balance Due | Pay Weekly |
|---|-------------|------------|--|-------------|------------|
| Full Power, Convertible 1959 T-BIRD               | 1028        | 7.41       | Full Power, Gal. 500 Convert. 1963 FORD  | 1792        | 14.24      |
| Extra Clean, Fairlane "500" 1962 FORD             | 1074        | 8.14       | Double Power, H-Top 1959 MERCURY         | 297         | 2.14       |
| 9-Pass. Wagon 1958 OLDS Double Power              | 487         | 3.73       | Full Power, Air Cond. 1962 CADILLAC      | 2689        | 17.07      |
| Full Power, Convertible 1963 CADILLAC             | 3579        | 19.70      | V-8, Sta. Wgn., Sharp 1959 FORD          | 426         | 3.39       |
| 2-Door, Sharp 1959 FORD                           | 391         | 3.14       | Double Power, Sharp 1961 T-BIRD          | 1539        | 11.29      |
| Six Cylinder 1959 CHEVROLET                       | 394         | 3.14       | Bel Aire, V-8, Auto. 1960 CHEVROLET      | 777         | 6.16       |
| Impala, V-8, Convert., Floor Shift 1958 CHEVROLET | 391         | 3.11       | V-8, Bel Air 2-Dr. 1961 CHEVROLET        | 792         | 6.26       |
| 4-Dr. Station Wagon 1959 CHEVROLET                | 466         | 3.54       | 2-Dr. H-Top Coupe De Ville 1957 CADILLAC | 383         | 3.12       |
| Full Power, 2 Tops 1957 T-BIRD Sharp              | 1086        | 8.26       | Full Power, H-Top 1963 MERCURY           | 1688        | 13.41      |
| Hardtop 1959 BONNEVILLE                           | 688         | 5.46       | 4-Dr. Station Wagon 1962 CHEVROLET       | 1292        | 9.42       |
| Convert., Double Power 1961 BUICK                 | 1374        | 9.96       | Sedan De Ville—As Is 1960 CADILLAC       | 723         | 6.04       |
| Tudor, Automatic Transmission 1960 COMET          | 514         | 4.03       | 4-Dr., Sharp 1961 FALCON                 | 588         | 3.94       |
| 9-Pass. Wgn., V-8 1960 CHEVROLET                  | 743         | 6.06       |  |             |            |

**TELE-GRAND CAR COMPANY**  
Liquidators  
LOCATED CORNER of GRAND RIVER and TELEGRAPH  
CREDIT MEN ON DUTY at ALL TIMES TO O.K. YOUR APPLICATION  
NO APPLICATION TURNED DOWN WILL PAY OFF BALANCE ON PRESENT CAR  
COURTESY CAR WILL PICK YOU UP  
23917 Grand River KEnwood 3-8700

CHEVROLET CHEVROLET CHEVROLET CHEVROLET CHEVROLET CHEVROLET

# ALLISON

**CHEVROLET**

**CHEVROLET SALES and SERVICE AND GUARANTEED**

**USED CARS**  
Phone  
**GL. 3-4600**

"THE BEST Used Cars You Will Find Anywhere"

**FREE GIFTS!**

**345 NORTH MAIN -- PLYMOUTH**

**SEE THE '65 CHEVROLETS HERE NOW!**

★ Bring the Family ★      ★ DOOR PRIZES! ★

**100 CARS IN STOCK - SPOT DELIVERY**

**Give us a try before you buy!**

# A SUPERMARKET THAT IS JUST A LITTLE BETTER



# Stop & Shop

470 FOREST AVE.  
PLYMOUTH

STOP AND SHOP'S FRESH, LEAN

## HAMBURGER

# 43¢ lb

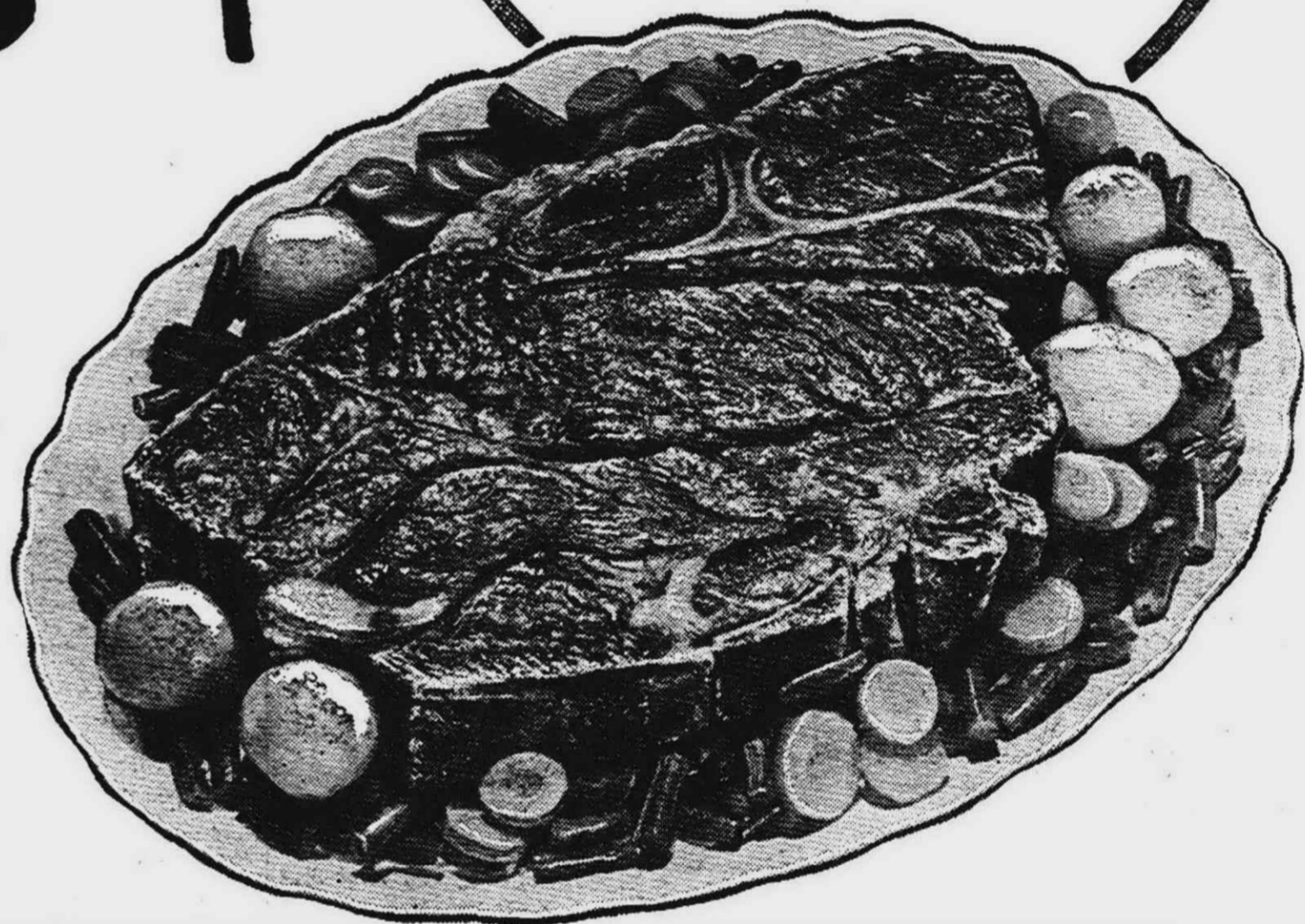
- "Triple R Farms" Michigan Grade 1 Ring Bologna Garlic or Plain 39¢ lb.
- "Triple R Farms" . . . Fresh Dressed Fryer Legs 49¢ lb.
- Fryer Breasts Ribs Attached 53¢ lb.
- Lean, Meaty Spare Ribs Medium Size 49¢ lb.

Our Friendly, Competent Meat cutting experts are always on duty



All Stop and Shop Meat Is Cut to Customer's Specifications

Select your Meat the same way your Mother did



WE RESERVE THE RIGHT TO LIMIT QUANTITIES

**"SHOPPING FLING" SWEEPSTAKES**

WIN \$10,000 in CASH... CARS... MINK STOLES

ENTER SOON!  
ENTER OFTEN!

THE WASHDAY MIRACLE  
GET DETAILS IN OUR STORE **TIDE GIANT SIZE 69¢**

"TRIPLE R FARMS" U.S. CHOICE

# CHUCK ROAST

BLADE CUT

# 39¢ lb.

|   |         |
|---|---------|
| Center Cut Chuck Roast  | 49¢ lb. |
| Round Bone Beef Roast   | 59¢ lb. |
| Lean, Tender Pork Cutlets <small>Boneless and Cubed</small>               | 69¢ lb. |
| Stop & Shop's Lean, Tender, Boneless Stewing Beef                         | 79¢ lb. |
| "Triple R Farms" Hickory Smoked Picnics <small>4 to 6 Lb. Average</small> | 33¢ lb. |

MAXWELL HOUSE

## Instant Coffee

10-Oz. Jar **1.39**

OPEN Monday thru Saturday 9 A.M. to 9 P.M.

Prices Effective Wednesday, Sept. 30, thru Tues., Oct. 6, 1964.

## PRESTONE ANTI-FREEZE

1 GALLON **1.39**

BLEACH **ROMAN CLEANSER** Gallon Plastic **44¢**

CALIFORNIA RED FLAME **TOKAY GRAPES** 2 lbs. **25¢**

STOKELY'S **PINEAPPLE JUICE** 46-oz. Can **29¢**

CAMPBELL'S **VEGETABLE SOUP** No. 1 Can **12¢**

College Inn **Chicken Ala King** 10 1/2-Oz. Can **33¢**

Treesweet, Fresh Frozen **Orange Juice** 6-Oz. Cans 4 for **89¢**

Sealtast, Assorted Flavors **Popsicles** 12 for **39¢**

Wilson's All Star **Fresh Milk** 1/2-Gal. Carton **37¢**

The Breakfast of Champions **Wheaties** 18-Oz. Box **37¢**

Mario's—Stuffed **Spanish Olives** 22-Oz. Glass Keg **89¢**

Bonquet Frozen, All Varieties **Meat Pies** 8-Oz. Pkg. **14¢**

Sara Lee Frozen **Cakes** Your Favorite! Each **65¢**

Blue Ribbon **Golden Margarine** In 1/4 Lb. Prints **12¢**

**Pillsbury Flour** 5 Lb. Bag **39¢**

The All-Purpose Shortening **Swift'ning** 3 Lb. Can **44¢**

Holsum's Sliced **Hot Dog Rolls** Pkg. of 8 **17¢**

Staley's **Pancake Syrup** 24-Oz. Bottle **39¢**

Dow's Handi-Wrap **Sandwich Bags** 100 Count **29¢**

Hudson Farms **Mushrooms** 4-Oz. Can 5 for **\$1.00**

**DISCOUNT PRICES on All Health and Beauty Aids**

KING SIZE BROMO SULTZER

Reg. Price **88¢** Our Price **69¢**

50 FREE GOLD BELL STAMPS With \$5.00 Purchase or More (Not Including Beer, Wine, Cigarettes, Baked Goods or Health and Beauty Aids.) at STOP & SHOP SUPER MARKET 470 FOREST AVE. PLYMOUTH, MICH. Limit 1 Coupon per Customer. Adults Only. Coupon Valid After Tues., Oct. 6.

50 FREE GOLD BELL STAMPS With Purchase of 2 or More 1-Lb. Pkgs. of Any Brand of SLICED BACON at STOP & SHOP SUPER MARKET 470 FOREST AVE. PLYMOUTH, MICH. Limit 1 Coupon per Customer. Adults Only. Coupon Valid After Tues., Oct. 6.

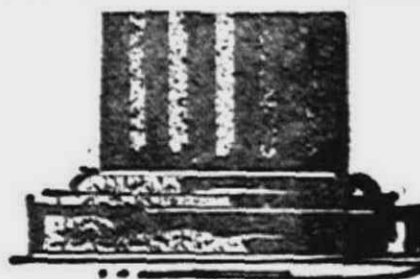
100 GOLD BELL STAMPS With \$2 Purchase or More Fresh Fruits and Vegetables at STOP & SHOP SUPER MARKET 470 FOREST AVE. PLYMOUTH, MICH. Limit 1 Coupon per Customer. Adults Only. Coupon Valid After Tues., Oct. 6.

50 FREE GOLD BELL STAMPS With Purchase of 3 Cans or More TUNA FISH at STOP & SHOP SUPER MARKET 470 FOREST AVE. PLYMOUTH, MICH. Limit 1 Coupon per Customer. Adults Only. Coupon Valid After Tues., Oct. 6.

100 FREE GOLD BELL STAMPS With Purchase of 3 or More Furnace Filters at STOP & SHOP SUPER MARKET 470 FOREST AVE. PLYMOUTH, MICH. Limit 1 Coupon per Customer. Adults Only. Coupon Valid After Tues., Oct. 6.

50 FREE GOLD BELL STAMPS With 3 Boxes or More BRACH'S FALL CHOCOLATES at STOP & SHOP SUPER MARKET 470 FOREST AVE. PLYMOUTH, MICH. Limit 1 Coupon per Customer. Adults Only. Coupon Valid After Tues., Oct. 6.

AT STOP & SHOP YOU GET GOLD BELL GIFT STAMPS





WILL HOST BUSINESS, INDUSTRY LEADERS

# Livonia CC, Schools Join in Business-Education Day Program

The Livonia Chamber of Commerce will join with the Livonia and Clarenceville school systems in a joint business-education day program on Nov. 10.

The project is de-

signed to familiarize Livonia business and professional men with the day-to-day activities of the two school systems and their administrations.

Approximately 250 business, professional and governmental representatives will be invited to participate.

A four-hour program will be provided by the representatives by the host senior high schools. The activities will include a tour of facilities, luncheon, group discussions and visits to departments

that have special interest of the guests.

Education-Business Day is part of the over-all Chamber project to develop greater understanding between the business and professional community and the two school systems and administrations.

"The business and industrial community pays a large percentage of the bill for the maintenance of the school systems," said Tanguay. "Their executives are interested in knowing how their tax money is spent. They

also are interested in learning how they can help educators to evaluate the results of the important work they are doing."

"On the other side of the picture, the educators have been pressing for an opportunity to host business and industrial leaders at the schools in this type of program. They look forward to having the guests become better acquainted with their work."

The Chamber's joint committee sponsored an E-B Day last May during which 260 teachers from

Bentley, Franklin and Clarenceville High Schools visited 22 area firms.

The committee last week studied the evaluation questionnaires returned by 90 per cent of the firms and 80 per cent of the teachers. The reports indicated a desire to carry out the program again.

The joint committee

has asked the two school systems to conduct B-E Day again on May 12, 1965.

In the Nov. 10 pro-

gram, the educators will return the compliment and host the industry and business leaders in an informative program.



**The Observer**  
SPORTS — TV — CHURCH DIRECTORY  
LIVONIAN OBSERVER REDFORD OBSERVER  
PLYMOUTH OBSERVER FARMINGTON OBSERVER  
Wednesday, September 30, 1964 ★★ Page One



**American HARDWARE & SUPPLY CO.**  
31245 EIGHT MILE at Merriman  
476-6240 537-2645

**HOUSEHOLD DEPT.**  
SAVE ON CONTACT Shelf Lining Paper  
Regular 49c  
**33c** / yd

**LUMBER Department**  
CASH 'N CARRY  
2"x4"x7' **44c**  
2"x4"x8' **54c**

**FIREPLACE DEPT.**  
No. 713 **BLACK WOOD BASKET**  
Reg. 4.99  
Brass Legs Brass Handle **4.88**

Sportsmen — Save on 'BLUE ROCK' TARGETS  
Regular \$3.75  
**2.99**  
Box of 135 Targets

**TOYS**  
From Our Floor of Toys!  
MONOPOLY Regular \$5.00 **2.99**  
EASY MONEY Regular \$2.00 **1.18**  
CONCENTRATION Regular \$4.00 **2.38**  
Layaway for Christmas Now!

**SCREENS FIREPLACE**  
Made to Order by Factory Trained Experts  
Special Announcement  
Ray Shimmel of Roycroft, Livonia  
Is The Lucky WINNER of The 18" Jacobsen Lawn Mower  
Awarded as a Special Feature of Our Grand Opening

**ALL SERVICES** ★ Store Hours ★  
MON. thru FRI. 8 to 6 | SAT. 8 to 5:30 | SUN. 10 to 1  
Owner Manager Marv Kemp  
**AUTHORIZED EDISON AGENCY**  
★ LIGHT BULB EXCHANGE  
★ APPLIANCE REPAIR  
★ PAY BILLS HERE  
**Hardware & Supply Co.**

**It's For Real**



**LUCKY LADY:** Mrs. George T. (Marion) Edwards of 16832 Bell Creek Lane, Livonia, models the beautiful mink stole she won on Ladies Day at the Detroit Race Course. With Mrs. Edwards, center, are Edna Clark, Club Party hostess of the DRC, and Paul R. Ryder, Vice President-Operations.


**Kroger Hikes Dividend Rate, Names Director**  
Dividends on common stock of The Kroger Co. were increased and a new director was elected by the retail food firms' Board of Directors at a meeting in Cincinnati.  
The regular quarterly dividend on Kroger's common stock has increased from 27½ cents to 30 cents per share. On this basis, the indicated annual dividend rate will be \$1.20 per share. The quarterly dividend is payable December 1, 1964 to shareowners of record at the close of business October 30, 1964.  
The Directors also declared a quarterly dividend of 53¼ cents per share on the Series A cumulative preferred shares payable January 1, 1965 to shareowners of record at the close of business December 10, 1964.  
Robert Montgomery, Kroger Vice President, was elected a Kroger Director at the Board meeting. Thomas T. Oyer has announced his resignation as Vice President and Director for personal reasons.  
Joseph C. Lamb, Forecasting Manager in the General Office Finance Division, was elected an Assistant Treasurer at the meeting.

**SINGER SALE-A-THON**  
Chance of a Lifetime to **SAVE-SAVE-SAVE!**



**SAVE \$60**  
New Touch & Sew Zig-Zag Sewing Machine (model 600) in a desk! Exclusive SINGER Feature—the Push-Button Bobbin—the bobbin fits right in the machine!  
PLUS—Daily savings on unadvertised specials!  
**SINGER SEWING CENTER**  
WONDERLAND SHOPPING CENTER R  
Plymouth at Middlebelt  
GA 7-0011 LIVONIA  
Check Phone Book for Store Nearest You  
Singer is a trademark of THE SINGER COMPANY  
Listed in phone book under SINGER COMPANY

**FLORSHEIM SHOES**  
for men  
PRICES START AT \$19.95 - \$24.95



**IMPERIAL \$34.95**

Because they look the part, feel the part, fit the part—Florsheim Shoes are an important part of the wardrobe of well-dressed men—and a worthy addition to our fine names in quality men's wear. Our selection is outstanding—why not choose yours soon.

**HOCKING SHOES**  
33191 PLYMOUTH ROAD (SHELDEN CENTER)  
USE YOUR SECURITY CHARGE

**BOTSFORD GENERAL HOSPITAL**  
(OSTEOPATHIC)

IS PLEASED TO ANNOUNCE EMPLOYMENT OPPORTUNITIES IN THE FOLLOWING OCCUPATIONS

|                             |                           |  |
|-----------------------------|---------------------------|--|
| REGISTERED NURSE            | HISTOPATHOLOGY TECHNICIAN | KITCHEN PORTER                         |
| LICENSED PRACTICAL NURSE    | LABORATORY AIDE           | DISH OPERATOR                          |
| OPERATING ROOM TECH.        | LABORATORY RECEPTIONIST   | UTENSIL AIDE                           |
| DELIVERY ROOM TECH.         | EKG TECHNICIAN            | HOUSEKEEPING MAID                      |
| EMERGENCY ROOM TECH.        | EEG TECHNICIAN            | HOUSEKEEPING PORTER                    |
| MALE ATTENDANT NURSING AIDE | X-RAY TECHNICIAN          | LINEN ROOM ATTENDANT                   |
| WARD SECRETARY              | ASST. X-RAY TECHNICIAN    | LICENSED HIGH PRESSURE BOILER OPERATOR |
| CENTRAL STERILE SUPPLY AIDE | X-RAY AIDE                | WALL WASHER                            |
| PHARMACIST                  | X-RAY RECEPTIONIST        | PAINTER                                |
| INHALATION THERAPIST        | RADIOISOTOPE TECHNICIAN   | MAINTENANCE HELPER                     |
| PHYSICAL THERAPIST          | COOK                      | ADMITTING CLERK                        |
| MEDICAL TECHNOLOGIST        | BAKER                     | CASHIER                                |
| LABORATORY TECHNICIAN       | COOK'S HELPER             | PBX OPERATOR                           |
| ASST. LABORATORY TECHNICIAN | DIETARY AIDE              | KEYPUNCH OPERATOR                      |
| BACTERIOLOGY TECHNICIAN     | —TRAY SERVICE             | INSURANCE CLERK                        |
|                             | DIETARY AIDE              | MEDICAL DICTAPHONE TRANSCRIBER         |
|                             | —CAFETERIA                | GENERAL CLERK TYPIST                   |
|                             | KITCHEN AIDE              | JUNIOR FILE CLERK                      |
|                             |                           | TYPIST                                 |
|                             |                           | MESSENGER                              |
|                             |                           | STOCK MAN                              |

also **SUPERVISORY POSITIONS** in  
NURSING HOUSEKEEPING MAINTENANCE RADIOLOGY LABORATORY

WE OFFER A COMPREHENSIVE PROGRAM OF EMPLOYEE BENEFITS INCLUDING . . .

- Regularly Scheduled Semi-Annual Increments
- Generous Paid Sick Time
- Liberal Paid Vacations
- Contributory Life Insurance

INSURE YOUR OPPORTUNITY EARLY BY WRITING FOR AN APPLICATION NOW TO  
GERSON I. COOPER  
Director of Personnel  
**BOTSFORD GENERAL HOSPITAL**  
28050 GRAND RIVER AVENUE  
FARMINGTON, MICHIGAN 48024

**LIVONIA'S APPLIANCE SUPERMARKET**  
APPLIANCES - TV - STEREO

**HOME APPLIANCE MART**  
34722 Plymouth Road  
NEAR WAYNE ROAD

WE BEAT ALL DEALS WE DO OUR OWN SERVICE  
OPEN EVENINGS 'Til 9 p.m., Saturday 'Til 6  
Plenty of Free Parking Phone 425-3500





# No Coupons, No Gimmicks, No Limits . . .

"Super-Right" Fully Matured, Corn-Fed Beef!

# STEAK SALE



**GREAT LAKES**  
**Mushrooms**  
 4 4-OZ. CANS **89¢**  
 Pieces and Stems

FULL CUT **Round**

**89¢**  
 lb.

**Sirloin**

**99¢**  
 lb.

**T-Bone**

**1 05**  
 lb.

"SUPER-RIGHT" BONELESS

**Rump or Rotisserie Roast** lb. **99¢**

"SUPER-RIGHT"

**Porterhouse Steak** lb. **1 09**

Get this charming WHITE HOUSE Milkmaid Doll **\$1.00** only and White House trademark

7 1/2" tall. Fully dressed. Eyes open and close. Head and arms move.

Every little girl will want this blond, blue-eyed doll for her very own! Here's how to get her—

Mail this trademark from package or can of any White House Milk product, plus \$1.00 and your name and address clearly printed on sheet of paper, to WHITE HOUSE, P.O. Box 32, Brooklyn, N. Y. 11201. (Or get Order Blank at White House Milk display at A&P.) (Offer may be withdrawn at any time.)

EVAPORATED—13-FL. OZ. CANS  
**White House Milk** 6 IN CTN. **79¢**

IONA BRAND — HALVES  
**Bartlett Pears**  
 3 1-LB. 13-OZ. CANS **1 00**

SULTANA  
**Fruit Cocktail** 4 1-LB. CANS **89¢**

GRADE "A" — CUT, GREEN SPEARS  
**A&P Asparagus**  
 4 1 1/2-OZ. CANS **89¢**

A&P FRENCH STYLE OR CUT  
**Green Beans** 2 1-LB. CANS **29¢**

CHAMPION, FRESH, CRISP  
**Saltines**  
 1-LB. PKG. **19¢**

MEAT VARIETIES  
**Campbell Soups** 6 10 1/2-OZ. CANS **97¢**

ANN PAGE FINE FOODS  
 Pure STRAWBERRY  
**PRESERVES**  
 2 LB. JAR **69¢**

California Red Flame  
**TOKAY GRAPES**  
 2 LBS. **29¢**

**BANANAS** 2 LBS. **29¢**

HONEY DEW—S SIZE  
**Melons** . . . . . EA. **49¢**

MICH. McINTOSH or JONATHAN  
**Apples** . . . . . 6 LB. BAG **49¢**

**Frozen Food SALE**

10-OUNCE PACKAGES  
 A&P Brand — Our Finest Quality  
 Peas, Cut Corn  
 Mixed Vegetables  
 Peas and Carrots  
 Spinach or Chopped Broccoli

9-OUNCE — REG. OR CRINKLE CUT  
**French Fries**

6-OZ. CANS  
**Grape Juice**  
**7 FOR 1 00**

ANN PAGE CREAMY OR KRUNCHY  
**Peanut Butter** . . . . . 12-OZ. JAR **33¢**

ANN PAGE  
**Tomato Soup** . . . . . 10 1/2-OZ. CAN **10¢**

ANN PAGE  
**Spaghetti** . . . . . 1-LB. PKG. **19¢**

ANN PAGE  
**Ketchup** . . . . . 2 1-LB. 4-OZ. BTL. **41¢**

A&P LIGHT CHUNK  
**Tuna Fish**  
 5 6 1/2-OZ. CANS **99¢**

SUNNYBROOK MEDIUM SIZE GRADE "A"  
**Eggs**  
 3 DOZ. **\$1**

BUY IT NOW!  
**MARVEL ANTI-FREEZE**  
 GAL. **1 49**

**Prestone** . . . GAL **1 69**

FEATURE VALUE! ANN PAGE  
 1-PT. 8-OZ. BTL.  
**Pancake and Waffle Syrup** **39¢**

A&P GRADE "A"  
**Tomatoes** . . . . . 3 LB. CANS **49¢**

DUTCH — SWEET CHOCOLATE  
**Wafer Sticks** . . . . . LB. PKG. **49¢**

HUNGRY JACK  
**Pancake Mix** . . . . . 2 LB. PKG. **39¢**

Pineapple-Orange DOLE FROZEN JUICE 4 6-OZ. CANS 89¢  
 Pineapple Juice DOLE FROZEN JUICE 4 6-OZ. CANS 89¢  
 Pineapple-Grapefruit DOLE FROZEN JUICE 4 6-OZ. CANS 89¢  
 Borden's Cremora 4-OZ. JAR 29¢  
 Waldorf Tissue 4 ROLLS IN PKG. 32¢

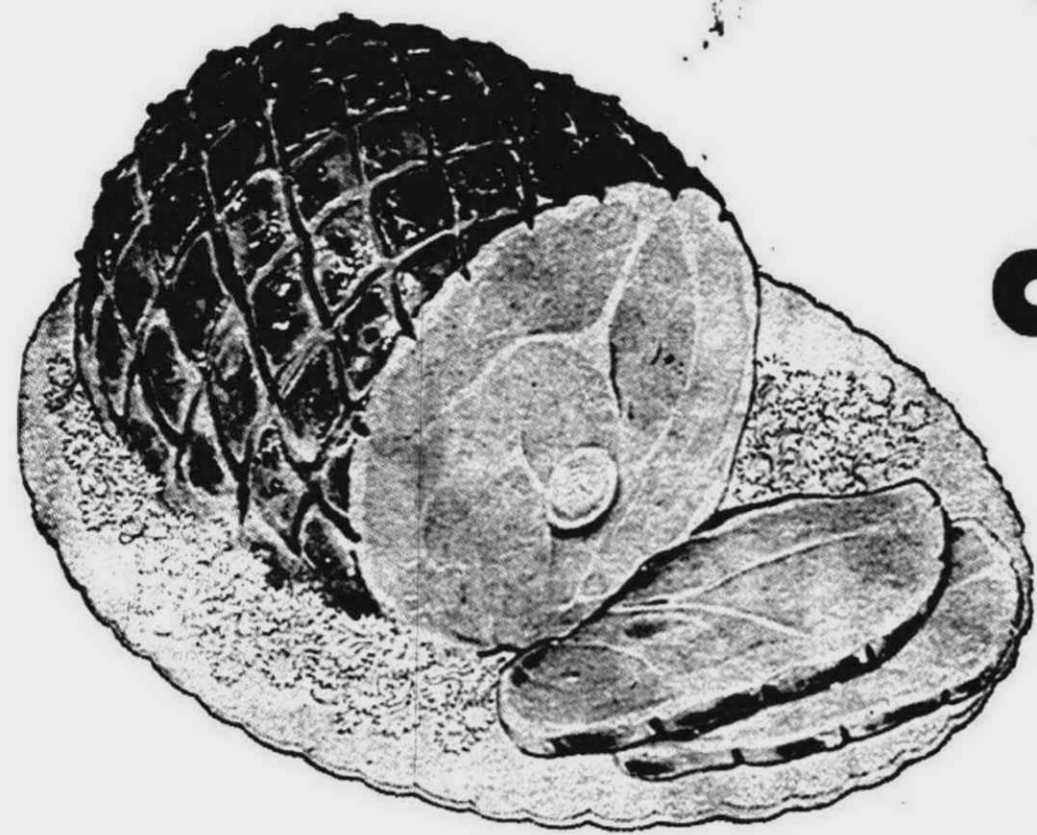
Pillsbury Biscuits TUBE OF 16 10¢  
 Pineapple Chunks DOLE 2 15 1/2-OZ. CANS 47¢  
 Instant Coffee MAXWELL HOUSE BONUS PACK 7-OZ. JAR 1 17¢  
 Instant Coffee MAXWELL HOUSE 200 OFF 16-OZ. JAR 1 29¢  
 Liquid Trend Detergent 2 15-OZ. BTL. 57¢

Feature Value!  
**Capri LIQUID DETERGENT**  
 QUART SIZE **39¢**

BRIGHT SAIL  
**Bleach** . . . GALLON PLASTIC **44¢**

|  |   |   |  |  |  |   |
|--|---|---|--|--|--|---|
| LARGE SIZE<br><b>Ivory Soap</b><br>3 BARS <b>49¢</b> | MEDIUM SIZE<br><b>Ivory Soap</b><br>3 BARS <b>29¢</b> | PERSONAL SIZE<br><b>Ivory Soap</b><br>4 BARS <b>29¢</b> | MILD, GENTLE<br><b>Ivory Snow</b><br>GIANT PKG.<br>1-LB. 15 1/2-OZ. <b>79¢</b> | HOUSEHOLD CLEANSER<br><b>Comet</b><br>2 14-OZ. CANS <b>29¢</b> | KING SIZE<br><b>Ivory Liquid</b><br>QUART PLASTIC <b>80¢</b> | STA-FLO — 17¢ OFF LABEL<br><b>Spray Starch</b><br>1-PT. 6-OZ. SIZE <b>59¢</b> |
|--|---|---|--|--|--|---|

# Just Quality Merchandise at Low Prices!



## "Super-Right" 10 to 12 Pound Semi-Boneless FULLY COOKED HAMS

- LESS COOKING SHRINKAGE
- NO CENTER SLICES REMOVED
- ALL SKIN REMOVED
- NO EXCESS FAT
- FULLY COOKED ... NOT JUST SMOKED

Whole or Half

# 59<sup>c</sup> LB.



CLOSED SUNDAY AS USUAL

"SUPER-RIGHT" QUALITY

## Slab Bacon

Whole or End Piece **45<sup>c</sup> lb**

"SUPER-RIGHT" BONELESS Chuck Roast..... **79<sup>c</sup>**

"SUPER-RIGHT" BONELESS Top-Round Steak..... **99<sup>c</sup>**

"SUPER-RIGHT" BONELESS Stewing Beef..... **79<sup>c</sup>**

"SUPER-RIGHT" Strip Steaks..... **1<sup>79</sup>**

CAP'N JOHN'S BREADED Fish Sticks..... **3 10-OZ. PKGS. 89<sup>c</sup>**

CAP'N JOHN'S OCEAN PERCH OR Cod Fillets..... **1-LB. PKG. 39<sup>c</sup>**

"Super-Right" 4 to 6 Pound Sizes

## Smoked Picnics

# 39<sup>c</sup> LB.

GOVERNMENT INSPECTED "Super-Right" Quality

## Fresh Fryers

WHOLE FRYERS

# 29<sup>c</sup> LB.

Cue-up lb. 33<sup>c</sup>

MEDDO-LAND ELBERTA FREESTONE

## PEACHES

IN HEAVY SYRUP

Irregular Sizes and Shapes

4 1-LB. 13-OZ. CANS **99<sup>c</sup>**

MARVEL — 5 FLAVORS

## ICE CREAM

HALF GALLON CARTON **49<sup>c</sup>**

Fudgsicles . . . . 12 IN PKG. **49<sup>c</sup>**

A&P GRADE "A"

## Apple Sauce

3 2-LB. 3-OZ. JARS **89<sup>c</sup>**

## SPECIAL A&P COFFEE SALE

MILD AND MELLOW

# Eight O'Clock

3 lb bag **189**

Save 24<sup>c</sup> .. Ground to Order at the store

FRESH . . . FLAVORFUL . . . FAMOUS FOR VALUE!

JANE PARKER BAKED FOODS

ENRICHED 1-LB. 4-OZ. LOAF

# WHITE BREAD

**19<sup>c</sup>**

Jane Parker Bread is guaranteed fresh daily . . . and fresh bread tastes better.

SAVE 10c — JANE PARKER, 1-LB. 8-OZ.

Pumpkin Pie . . 8-INCH SIZE **49<sup>c</sup>**

SAVE 10c — JANE PARKER

Angel Food Cake 1-LB. 1-OZ. RING **39<sup>c</sup>**

JANE PARKER — BOSTON

Brown Bread 2 15-OZ. PKGS. **49<sup>c</sup>**

IDEAL FOR COFFEE AND CEREALS

## Half & Half

SPECIAL THIS WEEK **39<sup>c</sup>** QUART CTN.

A&P VAC PACK REG. OR DRIP

Coffee 2-LB. CAN 1-LB. CAN **77<sup>c</sup>**

DELICIOUS OAT CEREAL

Cheerios 10 1/2-OZ. PKG. **29<sup>c</sup>**

Salad Dressing SULTANA BRAND QT. JAR **35<sup>c</sup>**

SOUTHERN DELIGHT Biscuits Plain or Buttermilk . . . 6 TUBES OF 16 **49<sup>c</sup>**

WHOLE KERNEL OR CREAM STYLE

A&P Corn Grade "A" . . . 4 1-LB. CANS **49<sup>c</sup>**

ANGEL SOFT Paper Towels . . . 2 ROLLS IN PKG. **29<sup>c</sup>**

Date Bar Mix BETTY CROCKER 14-OZ. PKG. 3c OFF LABEL **34<sup>c</sup>**

Betty Crocker Pizza 14 1/4-OZ. PKG. **39<sup>c</sup>**

Cheese Cake LAMBECHT 1-LB. 4-OZ. SIZE FROZEN **79<sup>c</sup>**

Roman Bleach Qt. 19c 1/2 GAL. **33<sup>c</sup>**

Johnson's Glo Coat 1-PY. 16-OZ. CAN **79<sup>c</sup>**

Bathroom Dispenser Dixie WITH 24 CUPS **79<sup>c</sup>**

Vaseline Hair Tonic Plus 4c 4-OZ. **89<sup>c</sup>**

Pride JOHNSON'S LIQUID WAX 5-OZ. SIZE **69<sup>c</sup>**

# DONUTS

Jane Parker Plain, Sugared or Cinnamon **19<sup>c</sup>** SAVE 8c PKG. OF 12

FEATURE VALUE **2** 1-LB. CTNS. **75<sup>c</sup>**

SANDWICH OR FOOD WRAP **Handi-Wrap** 100 FT. ROLL **29<sup>c</sup>**

GIANT SIZE **Lux Liquid** 1-PT. 6-OZ. PLASTIC **58<sup>c</sup>**

There is a Friendly A&P Super Market Near You



# Super Markets

AMERICA'S DEPENDABLE FOOD MERCHANT SINCE 1859

All Prices Effective thru Saturday, October 3rd in All Eastern Michigan A&P Stores









# Gary Ruby Returns to MSU Campus As A Student-After 13 Years

EAST LANSING, Mich. — Seventeen-year-old Gary W. Ruby is returning to Michigan State University after a 13-year absence.

Gary, who will be one of a record number of freshmen beginning classes at MSU on Oct. 1, was born while his father was a GI student at MSU.

Then, Gary's father was a part of the big surge in college growth that followed World War II. Now, Gary is part of the massive arrival of the post-war generation on campuses

throughout the United States.

William J. Ruby was living in a trailer court—typical of the many that sprang up around college campuses—when Gary was born Nov. 24, 1946, in his mother's hometown, Bad Axe, Mich.

The following June, the Ruby family moved into the newly erected tarpaper-covered barracks that soon became a landmark on the MSU campus and a home for thousands of families.

The family lived in the barracks until 1951 while the father, a former B-17 pilot in Italy, earned a bachelor's degree and a master's degree (with distinction) in civil engineering. He had a \$1,000 assistantship in his last year. Another son, James, was born in 1949.

The family lived largely on GI-Bill income and the senior Ruby's part-time job earnings. Mrs. Ruby did not work as many wives did, feeling it was more important to make a home for the family. She and

her husband recall with some nostalgia the good times they and other student families used to have in the barracks.

Since leaving MSU, Ruby has worked for a Virginia firm, and as a partner in a California printing firm. He is now with the Cornell University Aeronautical Engineering Laboratory in Buffalo, N.Y., and lives with his family in Clarence, N.Y.

Gary is an excellent student and a "letter of commendation" winner in the National Merit Scholarship competition. He has never seriously considered attending any university other than Michigan State. He will major in electrical engineering with emphasis on computers. Brother James also plans to come to MSU when he graduates from high school.

The Ruby family visited the MSU campus this summer while Gary attended the summer counseling clinic for new students. It was only their second visit to MSU since 1951 and they found many changes.

The enrollment, which will be in excess of 30,000 this fall, has doubled, and huge new co-educational academic residence halls stand in what used to be the barracks area.

Gary was one of the 3.4 million babies that made the number of American births jump 20 per cent in 1946. The following year, it jumped another 12 per cent.

## Trailer Trip

Livonia Police are looking for a man and woman accused of stealing two trailers from the hardware store owned by John Giacobozzi at 99300 Six Mile Road, according to police records.

Giacobozzi told investigating officers the trailers were parked on a driveway west of the building and both disappeared when the man and woman left. He valued the trailers at \$1,500.

The fellow who is thoroughly convinced that he's a failure is very seldom mistaken.

## LIVONIA EDUCATORS ASSOCIATION

### The Teachers Speak

By LYNN Q. GILMORE Executive Secretary

Leaders of the Livonia Educators' Association will meet with leaders from throughout Wayne County and Michigan on Thursday of this week to share the problems facing education. The leaders are convening in Ypsilanti.

The annual meeting has acquired the name of "Drive-In Conference" over the years. Professional staff members of the Michigan Education Association with headquarters in East Lansing, will serve as discussion consultants for the later afternoon and evening session.

Dr. E. Dale Kennedy, MEA Secretary, will open the conference for the estimated 200 local leaders at 5 p.m. Following dinner, the attendants will form several topical groups.

MEA's participation in the Michigan state school board election will be one of the major topics to be discussed by the Legislation group. The state association is supporting candidates in this election. Mrs. Evelyn Pobanz (Whitman), LEA Legislative Chairman, will attend the session. Members will examine ideas for securing increased state aid for local schools.

Howard Trenkle (Bentley), LEA Ethics Committee Chairman, will attend a session concerned with the implementation of the professional code. At present, over 1,500,000 educators subscribe to the Code of Ethics of the National Education Assn. Michigan educators adopted this code in 1963; its operation is still experimental in many respects.

Fred Stacks, MEA Asst. Executive Secretary, will lead discussions concerning recent improvements in the insurance program of the association. Robert Marks (Garfield), LEA Insurance Committee Chairman, will represent the local association at the session.

Teachers' salaries will be the primary topic in the group meeting conducted by Kai Erickson, MEA Salary Consultant. LEA Salary Committee member Ken McClain (Bentley) will represent Livonia educators. Trends in the overall salary picture in Michigan and in the nation will be re-examined, with special concern given the area of fringe benefits.

Charles Ruckhaber (Div. of Instr.) will represent the association in the discussions concerning Public Relations. Ruckhaber heads the Public Relations program of the LEA.

Through co-operative efforts and sharing of new ideas with other local leaders, the LEA is

## Peter Duchin To Play For Cinderella Ball

Dashing, youthful, debonair Peter Duchin and his orchestra will provide the music for the 1964 Cinderella Ball at the Sheraton Cadillac Hotel in Detroit on Saturday night, Oct. 3. Duchin, son of the beloved late Eddy Duchin, popular pianist of the 1930s, has solidly established his niche in the music field and is the toast of New York society.

The handsome 26-year-old Peter Duchin draws by the score those of his father's generation who still dance and those of their children who have just learned.

Eddy Duchin tried to discourage his son from following his path. The young Duchin, however, rejected his parental advice. While at Hotchkiss he organized a

Dixieland group; while at Yale, where he studied music and from which he graduated with honors, he did the same.

During his junior year in Paris he did all that was proper—lived on a barge on the Seine, studied serious music, helped edit the Paris Review and sat in with Left Bank jazz groups. When, a few years later, the Army stationed him in Panama, he once again organized a band. He plans, someday, to become a composer.

In addition to enjoying the dance music of Duchin, they will see the annual fashion show presented by Saks Fifth Avenue under the direction of Edward T. Bedford, Saks' general manager, and witness the crowning of Cinderella—this year Miss Cynthia Roby.

**"BIG" DISCOUNTS**

**PRESTONE** (Permanent) \$159 GALLON

**SUNBEAM HAIR DRYERS** \$788

**BIG DISCOUNTS FRESH STOCK**

**ROLLERS BRUSHES VARNISH**

**KODAK FILM CAMERAS-PROJECTORS**

**30-GALLON Glass-Lined—10-Yr. HOT WATER TANKS \$44.98**

**AUTO LITE SPARK PLUGS 49c**

**Quaker State Oil S.T.P. Tune-up Kits Oil Filters - Rislone Gumout - Headlamps Air Filters - Polish**

**POWER MOWERS FERTILIZERS—EDGERS**

**TIMEX \$4.88 Watches**

**PIEDMONT 19147 JOY RD. LUGGAGE CAMERAS BICYCLES**

**OPEN SUNDAY**

# KRESGE'S

**OCTOBER HOME** Thurs.-Fri. and Sat.

**3-Day Sale - Reg. 9.99**

**POLE LAMPS** 588

Walnut and brass\* pole, brass\* shades; brass\* pole, brass or enameled metal shades. Table pole lamps.

**3 Days - Reg. 1.99 - 2.77**

**5-PIECE PLASTIC ASSORTMENT** 167 ea.

Covered rectangular and triangular hampers, sit-on hampers, round waste baskets, swing-top bins. Colors.

**Reg. 1.78 - 3 Days! 8-Ft. DACRON® CURTAINS. 158**

96" Dacron® polyester tier curtains. Reg. 88c Values - 78c

**3 Days Only - Reg. 1.77**

**27x40" SCATTER RUG** 137

27 x 40" Loop and cut pile. "Tex-A-Grip" backing.

**3 Days Only - Reg. 2.98**

**LATEX WALL PAINT** 199 gal.

Ten decorator pastels. Soap and water clean-up.

**3 Days Only - Reg. 49c**

**CERAMIC ASH TRAYS** 37.

Large transitional styles in new accent colors.

**Thurs.-Fri.-Sat! Clip-and-Save Coupon Specials!**

**KRESGE COUPON** 9" DINNER PLATES "Whispering Rose" or "Moderne Blue" Reg. 29¢ with coupon 19¢

**KRESGE COUPON** "Petite" SUNBEAM ALARM CLOCK Reg. 3.99 with coupon 244¢

**KRESGE COUPON** PRINTED KITCHEN TERRY TOWELS Reg. 37¢ with coupon 23¢

**KRESGE COUPON** 4-GAUGE VINYL WINDOW SHADES Reg. 1.19 White 36 x 72" 77¢

**KRESGE COUPON** FOLD-AWAY LAUNDRY CART Reg. 2.49 Value with coupon 137

**KRESGE COUPON** 10-PK. SPECIAL! TOILET TISSUE Reg. 88¢ with coupon 66¢

Wonderland Center Plymouth at Middlebelt Shelden Center Plymouth at Farmington S. S. KRESGE COMPANY

**SEARS ROEBUCK AND CO.** Mr. Rudolph and Mr. Bela invite you to Sears all-new **Lyric Beauty Salon** In Sears Livonia Mall 2nd Floor

15 expert hair stylists to serve you. Appointments are not always necessary.

**PERMANENT WAVE SPECIALS! MON. THRU THURS. ONLY!**

TOTS' and TWEENS' CREAM PERM. WAVE 6.95 Complete

TEENS' OIL PERM. WAVE 7.95 Complete

LADIES' PROTEIN PERM. WAVE 8.95 Complete

USE YOUR SEARS CHARGE PLATE

Sears Carries a Complete Line of Wigs and Hair Pieces SEARS Livonia Mall, 7 Mile and Middlebelt—476-6000

**AVOID DANGER AND NEEDLESS EXPENSE**

**SEND THEM BACK-TO-SCHOOL WITH MAXIMUM PROTECTION GLASSES**

Everything we can possibly do to assure your child's safety

✓ SHATTER RESISTANT LENSES with ✓ BRACED-FRONT SAFETY FRAMES

**THOROUGH EXAMINATION BY REGISTERED OPTOMETRIST\***

\* Dr. Kenneth Sutherland, Optometrist \* Dr. R. Jakubowski, Optometrist

Use Your Sears Charge

**The Optical Dept. at Sears** Satisfaction GUARANTEED or your money back

KNOWLEDGE SKILL EXPERIENCE

Shop 9 a.m. 'til 9 p.m. Monday, Thursday, Friday and Saturday Tuesdays and Wednesdays 9 a.m. 'til 5:30 Seven Mile & Middlebelt 476-6000



SHOP ANYWHERE IN TOWN, YOU JUST CAN'T BEAT SEARS FOR HONEST VALUES, EVERY DAY

COMPARISON

Thursday, Friday and Saturday Only

SALE



Popular Pajama Collection IN STYLES AND COLORS TO PLEASE ALL

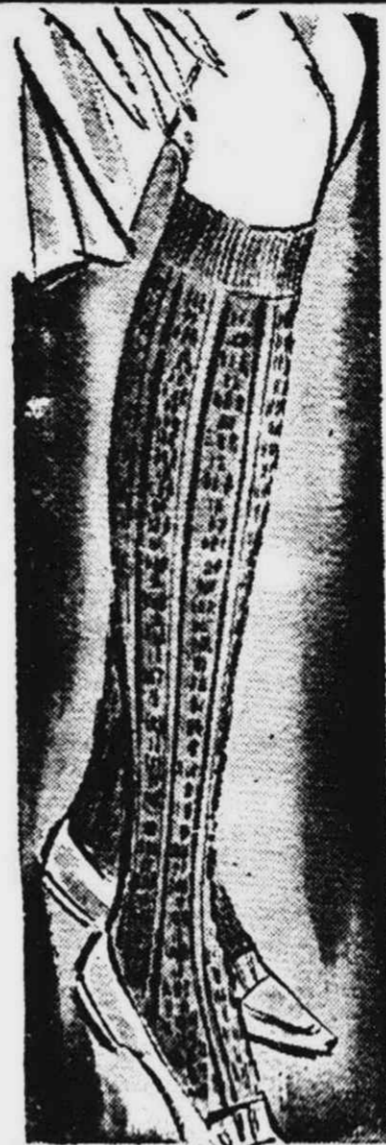
An excellent selection in fine quality nylon tricot blend. Choose from long or capri length, panty shift or baby doll styles. Small, medium, large. 25% SAVINGS. Reg. \$4 2.99

"Stretch-Strap" All-In-One

Reg. 9.98 7.99 More comfort, better support. Stretch strap all-in-one shapes you to a sleek, unbroken line. Of nylon and spandex with reinforced front and back panels. White, sizes 32-40B, 34-40C. Save 1.99 now at Sears!

Sears Corsetry Dept.

WOMEN'S HOSIERY SALE!



Girls and Women Knee-Highs

Reg. 69c 57c

Great for school, shopping and play. Cotton-nylon blend with bulky knit cables. Sizes M (8-9 1/2); L (10-11 1/2). Children's Knee-Hi Socks, Sale Priced . . . . .47c Pr.



Women's and Teens' Wool Crew Socks

Reg. 89c 71c

60% wool, 40% stretch nylon heavy-weight sock . . . ideal for general sportswear. Flat knit foot with ribbed top. White, Small, medium and large. Sears Hosiery Dept.



Stretch Mesh Nylon Hose

Reg. 98c 67c

Mesh knit, 15 denier. Reinforced at heel and toe for longer wear. Sizes—B fits 9 1/2-10; C 10 1/2-11. In beige or taupe. SAVE! Buy them by the dozen.

Men's Socks In a Variety of Styles

Crew Socks • Rib Slack Length • Stretch Slack Length • Cotton Argyle

Reg. 79c

53c

3 Pr. for 1.49

Socks for dress, socks for leisure. Choose argyles, crew styles, ribs. Wide assortment of fabrics, including cotton and nylon-cotton blends. Some in slack length. Stretch or sizes 10 to 13. White and colors.

Men's Fine Over-the-Calf Dress Socks

Nylon Argyle • Stretch Cotton-Nylon • Cotton Argyle

Reg. 98c

68c

3 Pr. for 1.99

Cotton for softness and absorbency, nylon for a better fit and wear. No bothersome slipping down with the stretch nylon tops. Fitted to foot, ankle, calf, leg. Solid colors. Stretch or sized—reg., lge.

Sears Mens' Furnishings

Maker's Closeout! Boys' Jackets, Parkas

Sizes 4 to 10 Were 8.99 to 10.99

5.97

Sizes 6 to 20 Were 11.99 to 13.99

7.97

A sensational selection at sensational savings! Surcoats! Hooded parkas! Hipsters . . . all last year's best-selling styles . . . and all warmly lined for cold weather wear. Sizes 6 to 20, but not all sizes in every style.

Sears Boys' Clothing Dept.



Classic Shirt Collection

FASHION RIGHT FOR SPORTS, CAMPUS WEAR

Our smart selection includes Su-Were 1.98, 2.98 Pima® cottons and dacron® cotton blends . . . longer wearing, smoother feeling. In solid colors and attractive prints. Sizes 10 to 18.

1.00

Sears Fashion Apparel Dept.



Girls' Classic Shirts

SNAPPY ROLL-UP AND LONG SLEEVE COTTONS

See combed cotton jacquards, solid color oxfords, pima cotton prints, plaids and stripes. All are beautifully tailored, machine washable. Convertible, Bermuda, button-down collars. Girls', 7-14.

1.44

Charge It

Sears School Girls' Dept.

Boys Socks For Casual Wear Cotton "Morpul" Crew Socks

Reg. 3 pr. 1.49

3 pr. 1.17

Combed cotton . . . elastic crew top holds sock in place. 8-11.

SuPima® Dress Hose

3 pr. 1.49

Finest quality, 2-ply SuPima® cotton nylon reinforced heel and toe, 8 to 11.

Sears Boys' Clothing

Little Girls' Hosiery Sale!

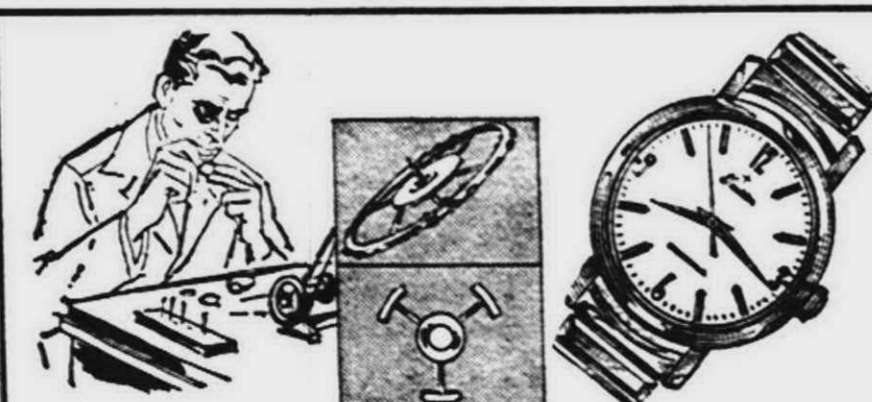
Nylon Stretch Tights

Ideal For School

88c

Run resistant, seamless. Double crotch, reinforced knit seat. Choice of colors. Sizes small, med., lge. Girls' Knee Socks. Reg. 2 pr. 1.08, 2 pr. 88c

Sears Infants Wear

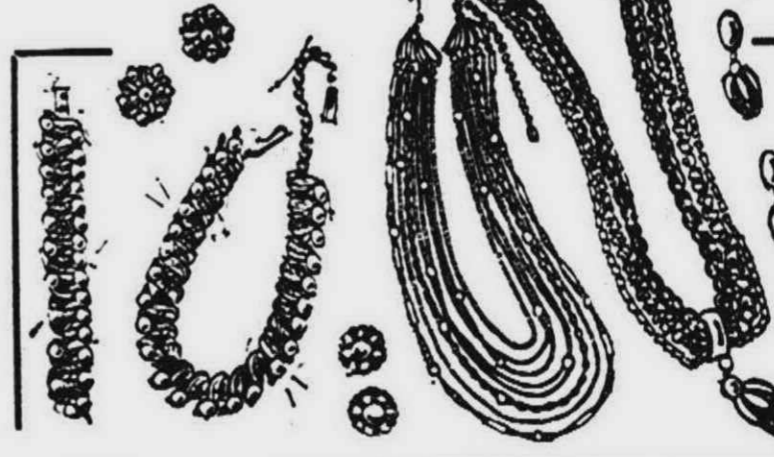


Watch Repair Special Overhaul and Mainspring

We will oil, regulate, clean, polish band and case, and put in a new mainspring . . . all at Sears special savings price.

Reg. 10.95 7.77

Chronographs, automatics, calendar watches higher. Sears Watch Repair Dept.



Dazzling Assortment of New Costume Jewelry

Wear these round-the-clock with town or casual clothes. Necklaces, earrings, pins in gold or silver color.

Sears Low Price

1.88

plus tax

Sears Jewelry Dept.

INSTANT CREDIT—Just Add This



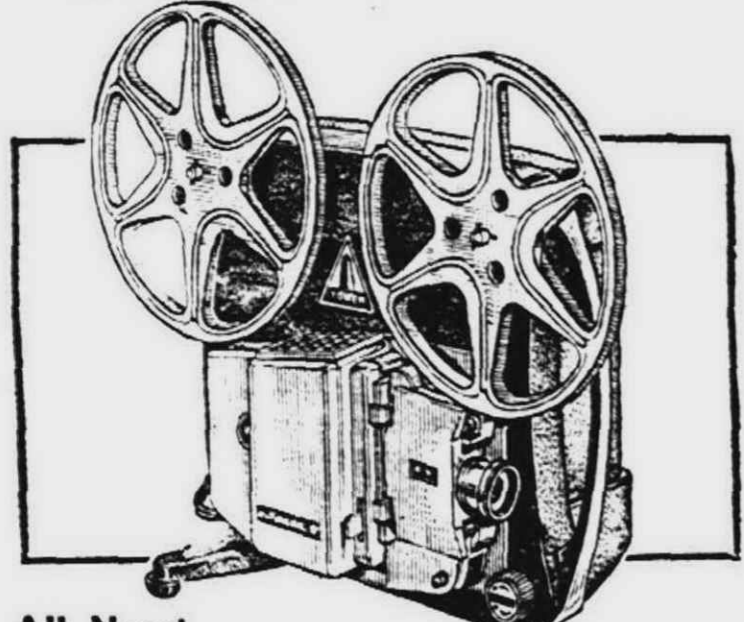
to Your Purse or Wallet



**Sale! Bowling Balls**  
 CUSTOM MEASURED AND DRILLED TO FIT YOU  
 Top quality hard rubber ball is perfectly balanced to help your game. Made to meet or exceed ABC and WIBC specifications. Guaranteed against defects. Buy now and save 5.02.  
 Reg. 19.99  
**14<sup>97</sup>**  
 Charge It



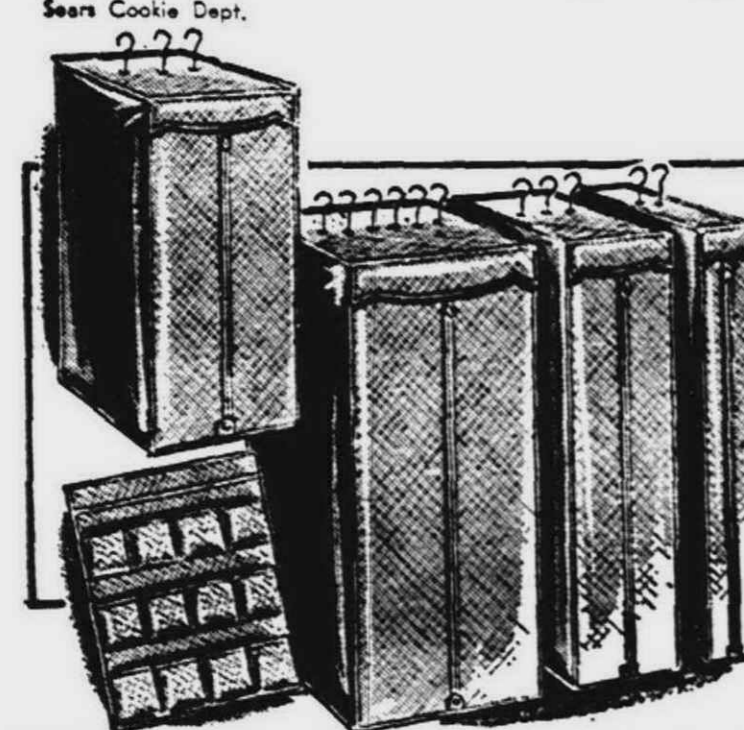
**Our 'Celebrity' Portable**  
 •STANDARD PICA • ELITE TYPE • ARTISTIC SCRIPT  
 Full 88 characters, including 1, 1, +, =, full length key set tab, removable roller and more, all in a vinyl covered steel case. Save \$15 during this sale!  
 Reg. \$95  
**79<sup>88</sup>**  
 Typewriter Paper, 500 Sheets, 77c  
 Includes Fed. Tax  
 Sears Office Supplies



**All New! 8mm Movie Projector**  
 AUTOMATIC THREADING . . . GIVES 1/2-Hr. SHOW  
 In 3 seconds you're ready to show sparkling "live" movies. Variable speed control . . . still and reverse.  
 Reg. 69.88  
**57<sup>88</sup>**  
 200' Can and Reel Set . . . 39c each  
 400' Can and Reel Set . . . 58c each  
 No Money Down  
 Sears Camera Dept.



**Sale! Peanut Clusters**  
 CRUNCHY TASTE TREATS, CHOCOLATE COATED!  
 Mounds of No. 1 choice Spanish peanuts, roasted to perfection and covered with milk chocolate. Save 12c lb.  
 Reg. 69c  
**57<sup>c</sup> lb**  
 Reg. 45c lb.  
**3 lbs. \$1**  
 Crisp oblong sugar wafers with creme filling in choice of flavors.  
 Sears Cookie Dept.



**Sale! 16 Garment Bag**  
 VINYL PLASTIC . . . WIPES CLEAN EASILY  
 Fashioned with a delicate "brushed silk" swirl effect. Quilted front and top. Full length zipper. Moth crystal compartment. Gold, turquoise, white.  
 Reg. 3.99  
**3<sup>49</sup>**  
 8-99 30-Garment, . . . 4.99 2-79 8-Sub, . . . 2.99  
 3-79 8-Draw, . . . 2.99 2-78 Shoe Bag, . . . 2.29  
 Sears Notions Dept.



**SHOP ANYWHERE IN TOWN, YOU JUST CAN'T BEAT SEARS FOR HONEST VALUES, EVERY DAY**

**COMPARISON**

Thursday, Friday and Saturday Only!

**SALE**



**Sale! Shirts for Men**  
 WONDERFUL SELECTION! STOCK UP NOW, SAVE  
 Choose from cotton blend and cotton Perma-smooth fabrics. Regular collar and button-down styles. All with matched pockets. Plaids, solids and stripes. Assorted colors. S, M, L, XL.  
 Reg. 2.99  
**2<sup>47</sup>**  
 Charge It  
 Sears Men's Furnishings Dept.



**"Mustang Brown" Service Shoes**  
 With Glove Leather Uppers

Glove leather uppers are tanned to keep them soft, moisture resistant. And they have relaxing cushioned insoles. Steel shank. Goodyear welt construction. Skid-resistant polyvinyl soles and heels. Moc toe styling.

**MEN'S**  
 SHOES IN SIZES FROM 7 TO 12  
 Oxford, Reg. 10.99 . . . . . 8.97  
 6" Shoe, Reg. 11.99 . . . . . 9.97  
 8" Boot, Reg. 13.99 . . . . . 11.97

**BOYS'**  
 SHOES IN SIZES FROM 3 TO 7  
 Oxford, Reg. 6.99 . . . . . 5.97  
 6" Shoe, Reg. 7.99 . . . . . 6.97  
 8" Boot, Reg. 8.99 . . . . . 7.97

**CHILDREN'S**  
 SHOES IN SIZES FROM 10 TO 3  
 Oxford, Reg. 6.99 . . . . . 5.97  
 6" Shoe, Reg. 7.99 . . . . . 6.97  
 8" Boot, Reg. 8.99 . . . . . 7.97

You Can Charge Your Shoes on Sears Revolving Charge Plan

Sears Shoe Dept.

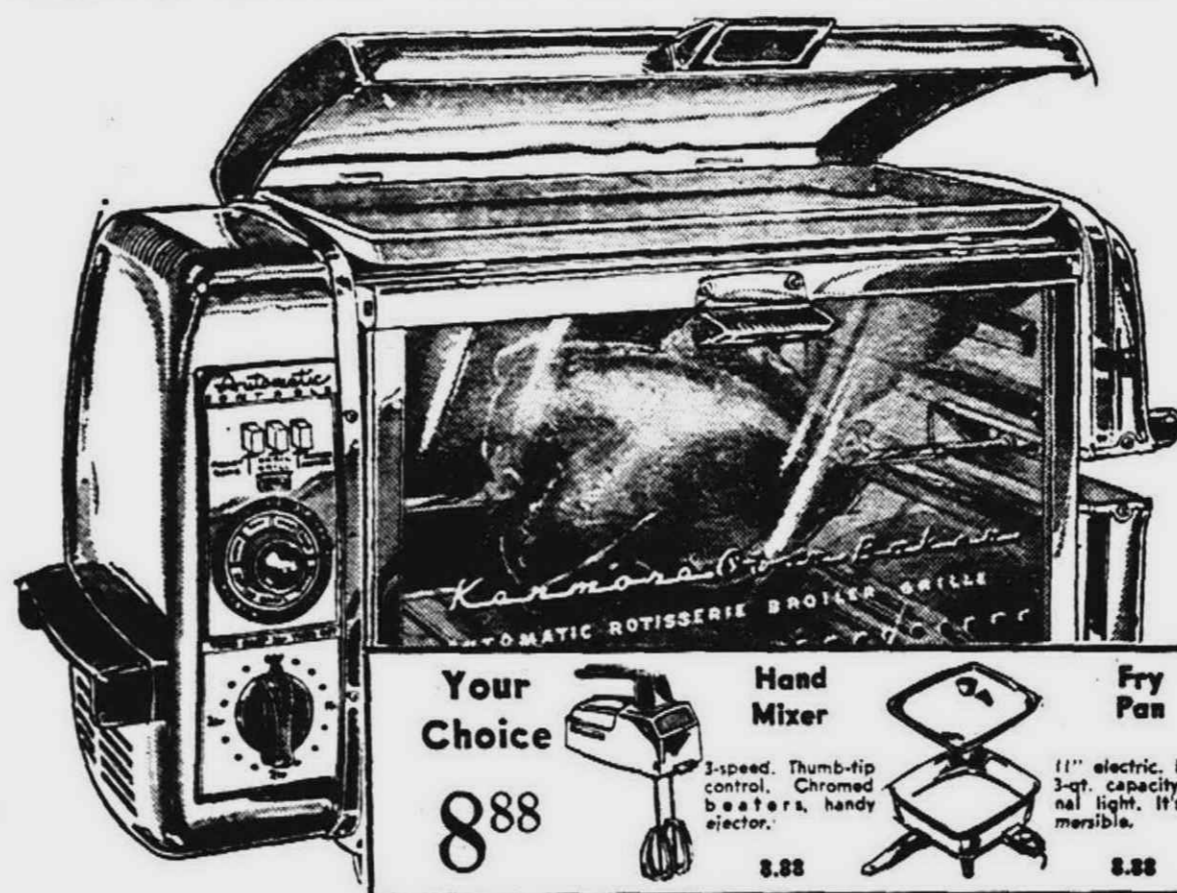


**Sale! Women's Dressy, Casual Shoes, 5-10**

Regular 6.99-7.99  
**5<sup>44</sup>**  
 your choice

- Tan or black textured pump. Foam cushion.
- Brown or black dressy. Foam cushion, stacked heel.
- Black or antiqued tru-file super flexible casuals.

**Save Over \$10! Kenmore Baker-Rotisserie**



Regular 59.99  
**49<sup>88</sup>**

- Use top to grill snacks, warm coffee
  - Bakes at a full 250° to 500° range
- Bakes, broils, grills and spit-roasts to perfection. Rotisses a 12-lb. turkey or 14-lb. roast or ham. Automatic thermostat control, 4-hr. timer. Easy-to-clean chrome-plated finish. Save!

**Your Choice 8<sup>88</sup>**

- Hand Mixer: 3-speed. Thumb-rip control. Chromed beaters, handy ejector. 8.88
- Fry Pan: 11" electric. Large 3-qt. capacity. Signal light. It's immersible. 8.88
- Coffee Urn: Automatic. Makes 22 cups. Signal light. Flavor selector. Aluminum. 8.88

Sears Electrical Dept.



**Sale! Men's Extra Slim Denim Jeans**

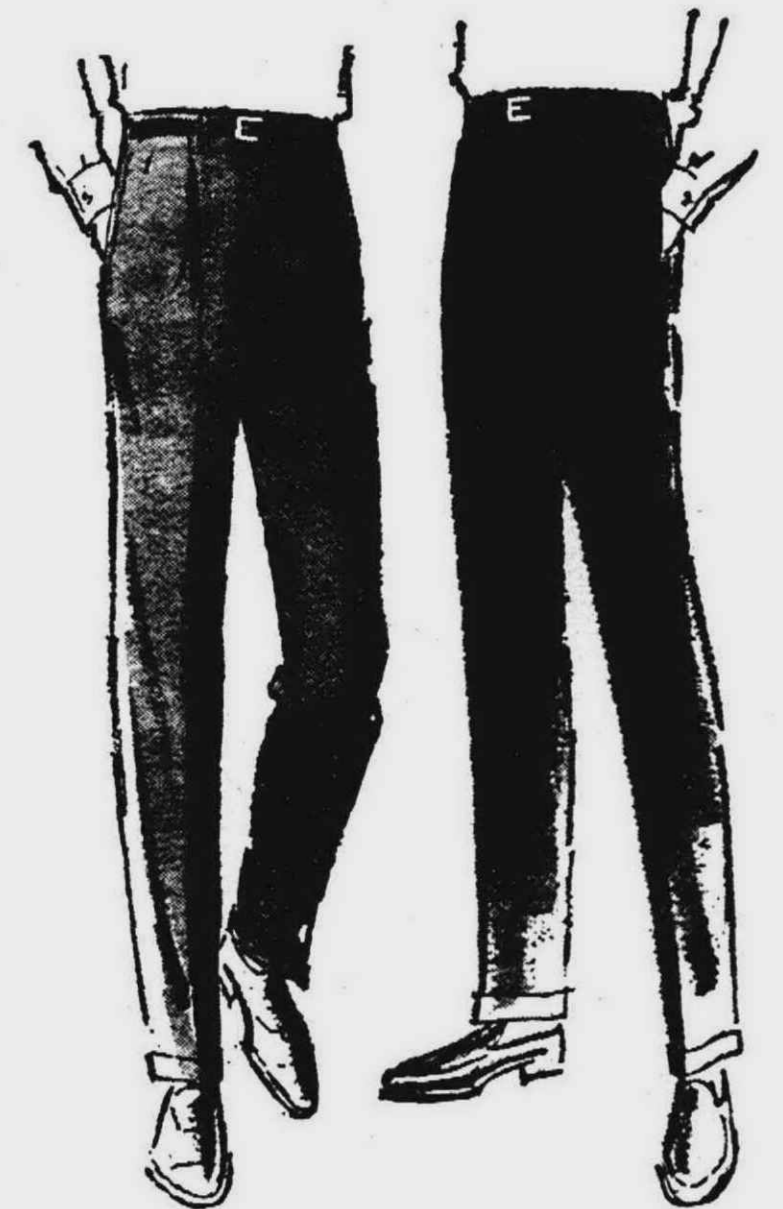
Reg. 3.99

**2<sup>97</sup>**

Sizes 28-38

They're great for loafing, studying or even working. Vat-dyed colors, slim cuffless legs, yoke pattern and bartacked pocket corners spell ruggedness that means something. Mercerized and sanforized, too. Light tan, black, light olive. Save 1.02.

Sears Men's Sport Clothing



**Sale of Our Finest Dress Trousers for Men**

Regular \$20

**13<sup>88</sup>**

Charge It

First Time Reduced. Fine all-wool worsted in flannels, gabardines and twist fabrics. Their extra-tight weave make these trousers amazingly resilient and resistant to wrinkling . . . hold their shape and keep neat-looking crease. Choose from single pleat, belt loop or plain front, belt loop styles. Finest details, pocketing and trim. Grays, blues and brown. Sizes 28 to 42.

Sears Men's Dress Clothing Dept.

**Sale! 36" Wide Felt**

OF 50% VIRGIN WOOL AND 50% RAYON, SAVE!

Easy to sew, never ravel, dry cleanable. Ideal for skirts, coats, jumpers, jackets, appliques and decorative purposes. In red, green, white, black, turquoise or gold. Buy now, save!

Reg. 1.29

**\$1**

yard

Sears Yard Goods Dept.

**SEARS LIVONIA MALL • 7 MILE and MIDDLEBELT • PHONE 476-6000**

STORE HOURS: MONDAY 9 TO 9 • TUESDAY, WEDNESDAY 9 TO 5:30 • THURSDAY, FRIDAY, SATURDAY 9 TO 9

# Satisfaction Guaranteed or Your Money Back

**SEARS**  
ROEBUCK AND CO

**SHOP ANYWHERE IN TOWN..  
YOU JUST CAN'T BEAT SEARS  
FOR HONEST VALUES EVERY DAY!**

## COMPARISON SALE

Specially Selected  
Appliances, Now At  
Outstanding Savings!

**SALE ENDS SATURDAY**

### HERE IT IS . . . THE HANDSOME, ALL NEW 16-INCH Silvertone COLOR TV

With NEW Rec-  
tangular Tube

**\$328**

No Money Down—No Payment  
Till Feb. 2, 1965

- Powerful circuitry gives crisp, clear long range reception
- Fine tune VHF channels only once with memory tuner
- 16" overall diagonal screen, 125-sq. in. viewing area

Enjoy the wonderful world of full-color television! You get beautiful, unsurpassed color PLUS 82 channel reception built-in; Hi-fidelity color tube with tinted safety shield; clear, undistorted FM sound system. Console styling in new, slim-trim dimensions. Cabinet has beautiful walnut open-grain veneer finish.



### Silvertone Stereo Phonograph

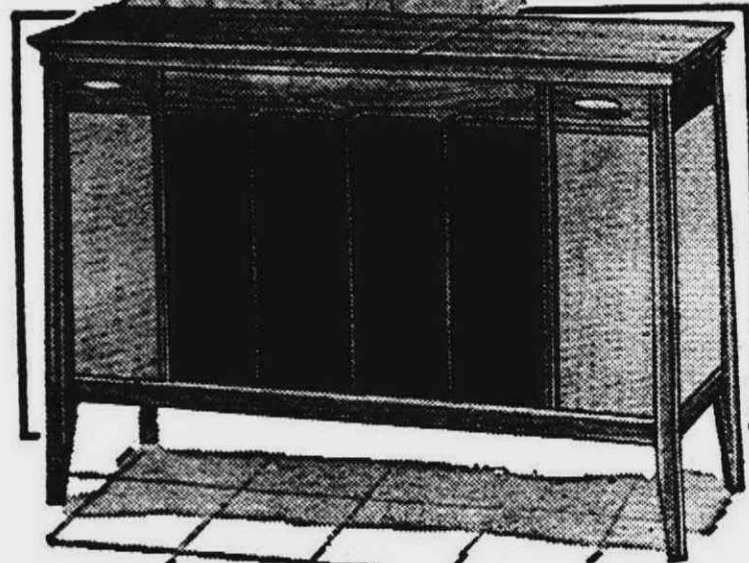
AM-FM Radio, STEREO FM

**\$228**

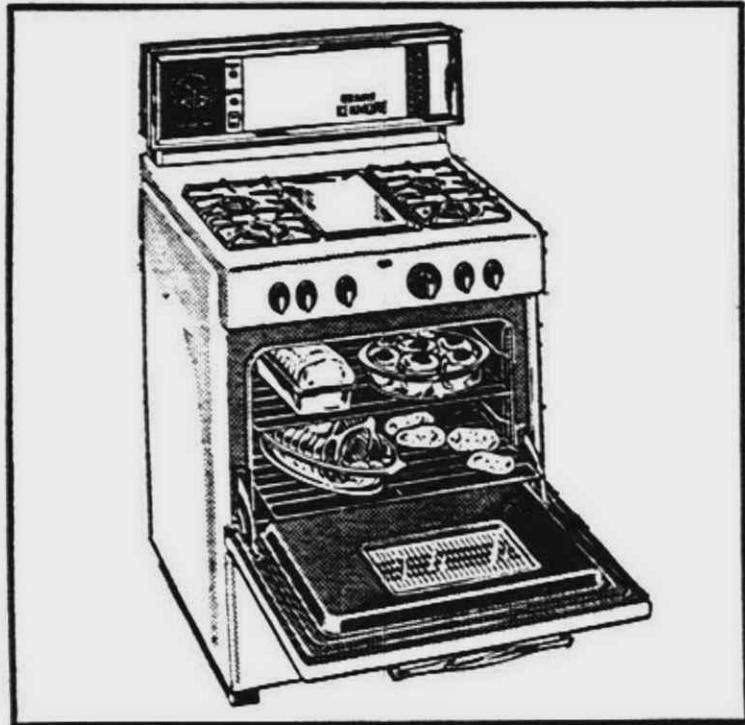
Reg. 279.99 . . . Save 51.99

- Enjoy lifelike stereo music from records or radio . . . 6 speakers
- FM stereo (multiplex) built-in
- Handsome walnut veneer cabinet

Superb stereo sound . . . elegant wood veneer cabinetry . . . at \$51 savings. Automatic frequency control keeps FM stations drift-free. 4-speed record changer, diamond needle. Separate loudness, balance, bass and treble controls for music as you like it.



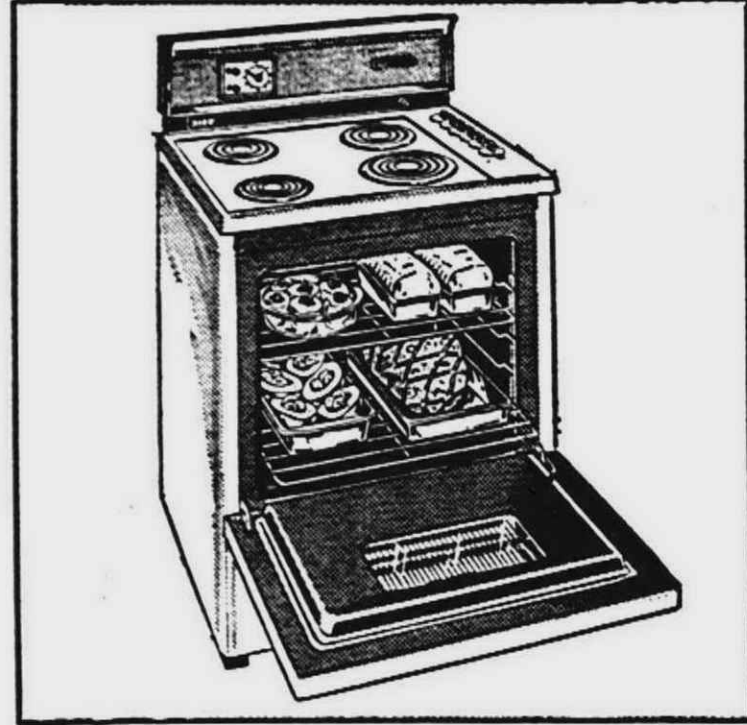
All Parts and Tubes Guaranteed  
1 Full Year. 90 Day Home Service Included



#### Griddle Top 30" Range

Satin finished top-griddle is perfect for quick snacks and meals. Giant smokeless broiler; large easy-clean oven has removable door; see-through window. Electric clock, outlet.

Reg. 159.95  
**139<sup>88</sup>**  
No Money Down



#### 30" Deluxe Electric

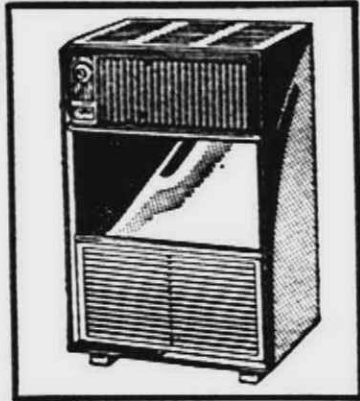
Automatic clock-controlled oven cooks meals . . . holds food at serving temperature for hours. Visi-Bake door lets you observe baking without heat loss. Timed outlet. Famous Kenmore quality.

Reg. 199.95  
**179<sup>88</sup>**  
No Money Down



**Sale! Oil Heater**  
Reg. 49.95  
**\$44**

Heats 1 to 3 rooms. Special burner pot designed for efficient combustion at all settings . . . saves you both fuel and money. Kenmore.



**Sale! Gas Heater**  
Reg. 169.95  
**139<sup>88</sup>**

70,000 BTU. "Counter-Flow" design draws cool air in at top, pushes warm air out at floor level. With built-in blower, safety pilot. Kenmore.



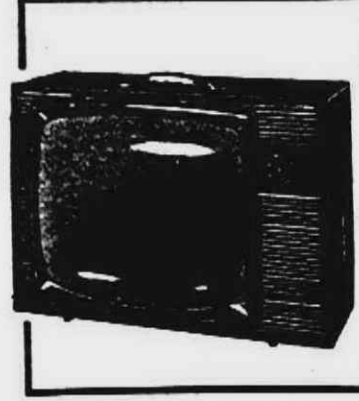
**Sale! 30" Range**  
Reg. 179.95  
**139<sup>88</sup>**

Cook the easy, automatic set-and-forget way! Clock-controlled oven holds a feast. Large storage drawer, infinite heat selections.



**New Kenmore 30"**  
Reg. 119.95  
**\$99**

Cook feast-size dinners in this giant-size oven. Has separate broiling compartment, and handy interval timer. Lighted backguard.



**19" Portable TV**  
Sale Priced  
**\$99**

Up front controls and 4-inch speaker. 19" over-all diagonal screen, 174-sq. in. viewing area.



**82 Channel Console**  
23" Screen  
**\$158**

Static-free FM sound. Up-front 5" oval speaker. Automatic gain control. Slim-styled Cabinet. Silvertone, 23" overall diagonal. 828-sq. in. tinted screen.



**11-in. 82 Channel**  
Portable  
**99<sup>88</sup>**

Photo-sharp pictures on 11" overall diagonal screen, 86-sq. in. viewing area. FM sound. All channel antenna.



**Electric Guitar**  
**59<sup>88</sup>**

18 fret single-pickup guitar. Amplifier and 6-in. speaker built into carrying case. Silvertone.

Sears Radio, TV and Phonograph Dept.

### 1-HP Vacuum with Attachments

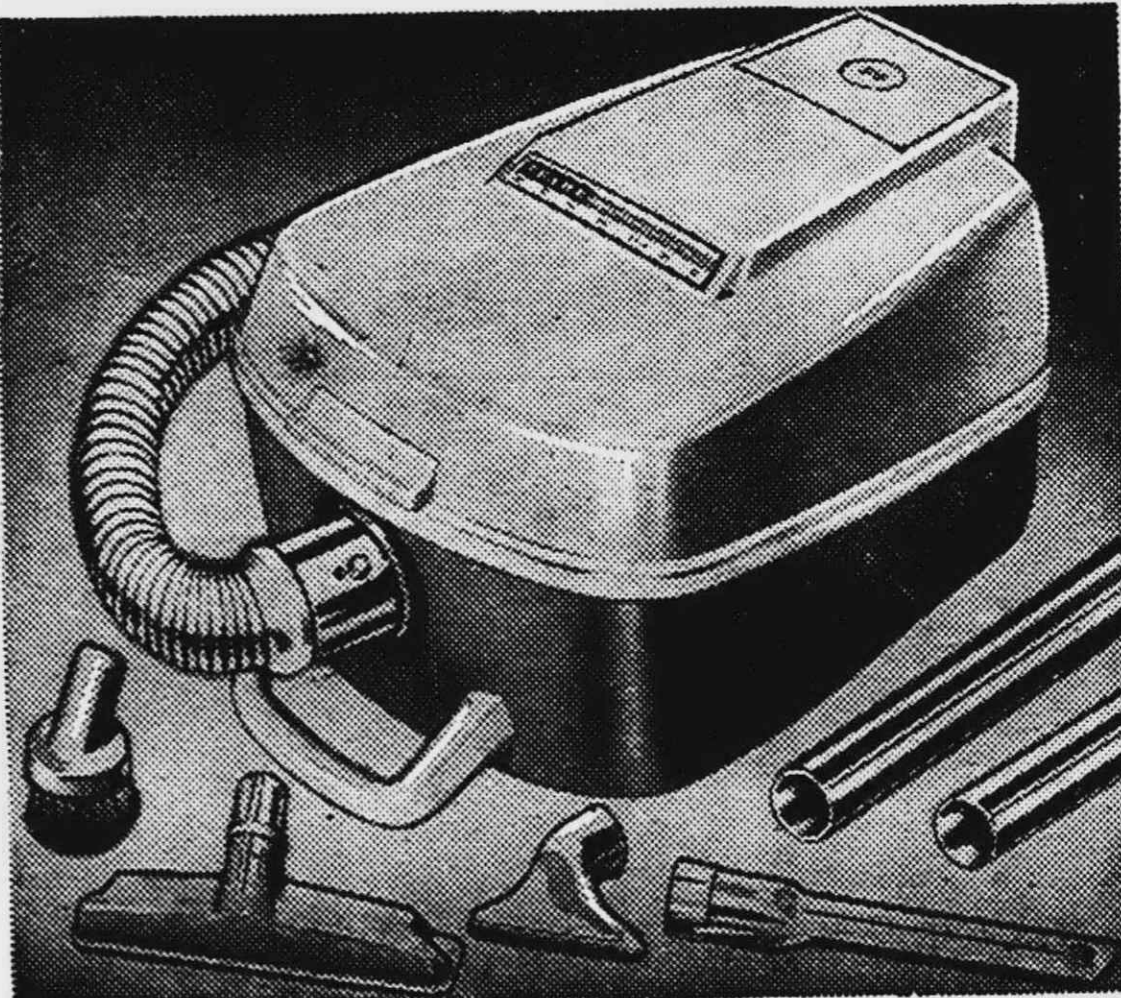
Compact, Light-weight Kenmore

**\$34**

No Money Down — No Payment Till Feb. 2, 1965

- Stands on end for easy stair cleaning, storage
- Three non-marring casters
- Disposable 300-cu. in. dust bag
- Full wrap-around vinyl bumper . . . 18 ft. vinyl cord

Compact, lightweight . . . yet you'll discover its 1-HP (input) motor packs a lot of penetrating cleaning force . . . both above-the-floor and on-the-floor. Oyster white and sandalwood. Complete with attachments. Only \$34 now!



Sears Vacuum Cleaner Dept.

### Sale! Zig-Zag Console Model

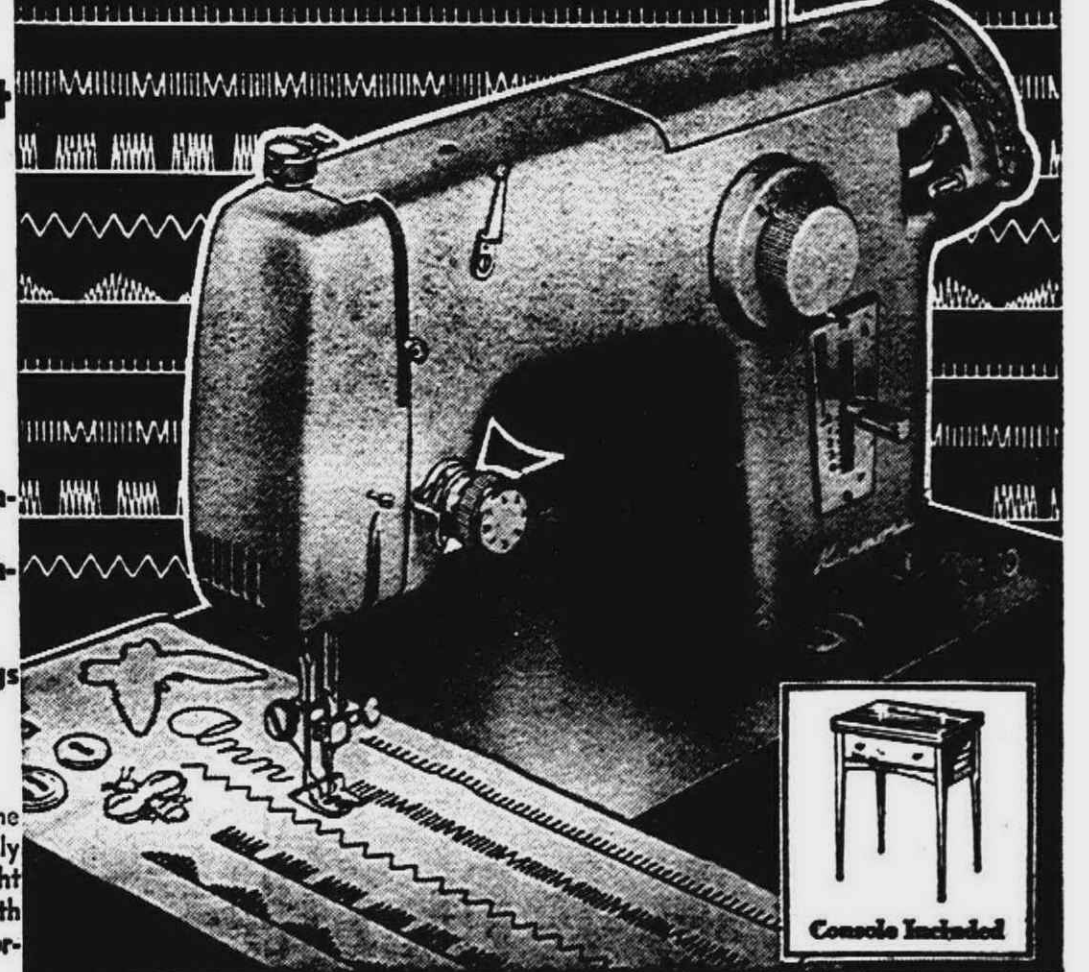
Walnut or Fruit-wood Finish Cabinet

**\$88**

No Money Down—No Payment Till Feb. 2, 1965

- Sews on buttons, makes button-holes, blind hems, overcasts, monograms—all without attachments.
- Just set knob so needle swings back and forth to desired width of stitch

Even a beginner will appreciate the simple ease of this machine. Not only does basic zig-zag but fine straight stitching. Round bobbin gives smooth action at all speeds. Built-in light. Forward-reverse control. Kenmore.



Sears Sewing Machine Dept.

**SEARS LIVONIA MALL • 7 MILE and MIDDLEBELT • PHONE 476-6000**

STORE HOURS: MONDAY 9 TO 9 • TUESDAY, WEDNESDAY 9 TO 5:30 • THURSDAY, FRIDAY, SATURDAY 9 TO 9

You Can Count on Us... Quality Costs No More at Sears

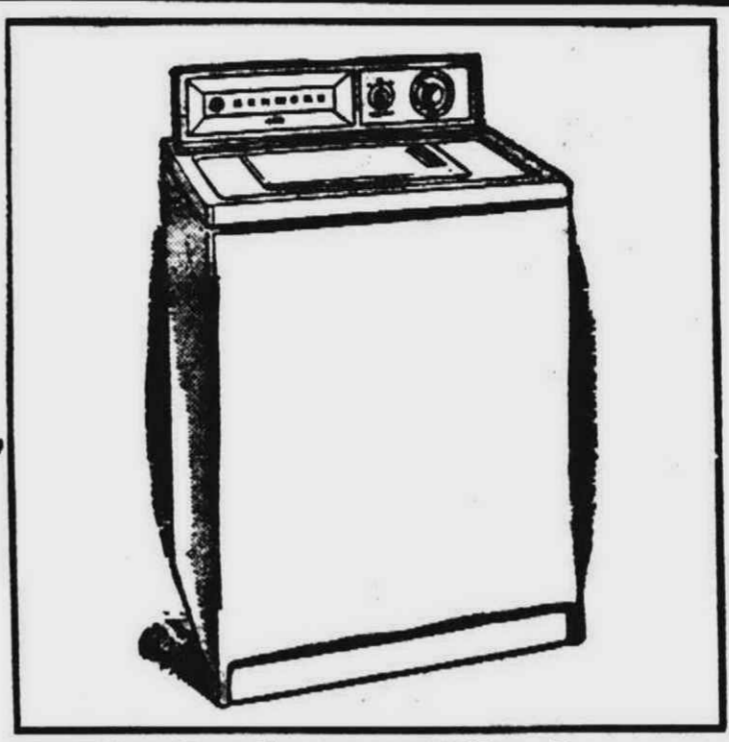


SHOP ANYWHERE IN TOWN, YOU JUST CAN'T BEAT SEARS FOR HONEST VALUES, EVERY DAY

COMPARISON

Thursday, Friday and Saturday Only

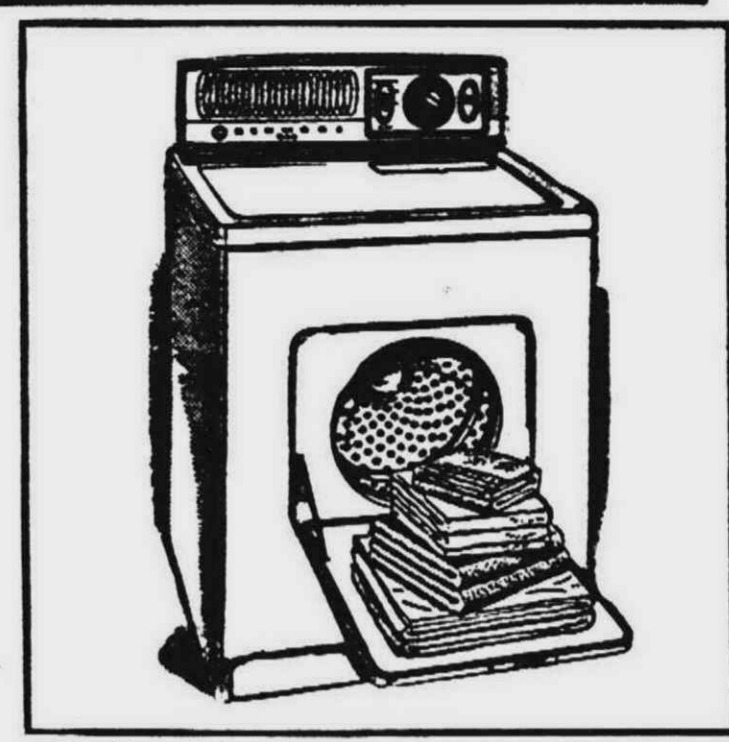
SALE



Suds-Saver Washer

Washes Any And All Fabrics Automatically \$157

Automatically fills, washes, rinses and spindries without additional setting. Up to 12-lb. capacity. Built-in filter works full time.



3-Cycles, 5 Heat Dryer

INSTALLED GAS\* INSTALLED ELECTRIC\* \$157 \$137

3 cycles... Normal, Delicate and Wash 'n Wear... lets you dry any fabric safely. 5 heat setting plus "Air" for fluffing. Easy to clean lint screen. Load-A-Door.

Sears Kenmore Washer and Dryer Dept.

Kenmore Automatic Washers

Save \$82... 2-Speed, 3 Cycle For All Fabric Care



Kenmore Detergent When You Buy Any KENMORE WASHER

2 Speed Agitation And Spin Provide Safe Washing Action For All Fabrics

3 Cycles For Washing Everything From Denims to Delicates Safely

Five Combination Wash-Rinse Water Temperature Selections

Infinite Water Level Selection—Can be Set for Any Size Load—Saves Water

White Porcelain Enamel Finish Top, Tub, Lid... Acrylic Enamel Cabinet

Safety Switch Stops Spin Action When Lid Is Raised

93 to Sell, Were 259.95

\$177

NO MONEY DOWN

No Payment Till Feb. 2, 1965 On Sears Convenient Payment Plan

- GIANT CAPACITY... AUTOMATIC FILTER... WARNING BUZZER... ONE DIAL... HIGHLY EFFICIENT Roto-Swirl Agitator...

\*Dryers installed. Normal installation of gas and electric dryers on Michigan Consolidated Gas Co. Lines, Consumers Power or Detroit Edison Co. Lines. Venting is extra.



Sale! Installed\* 1-Cycle Dryers Electric \$87 Gas \$107

Normal cycle with heat plus "Air" for fluffing clothes. With lint screen.



Sale! Economy Kenmore Washer One Dial Setting \$97

You get swirling, cleaning action with the 6-vane agitator. Kenmore.



Sale! Kenmore Wringer Washer For Only \$67

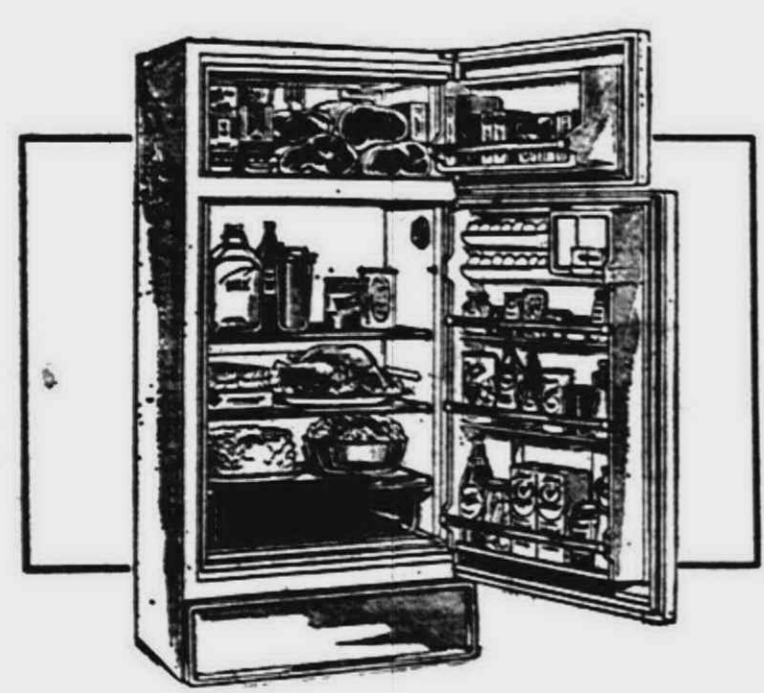
Target-type safety release, screw-type pressure adjustment. Full slat base.



Sale! Kenmore Wringer Washer For Only \$97

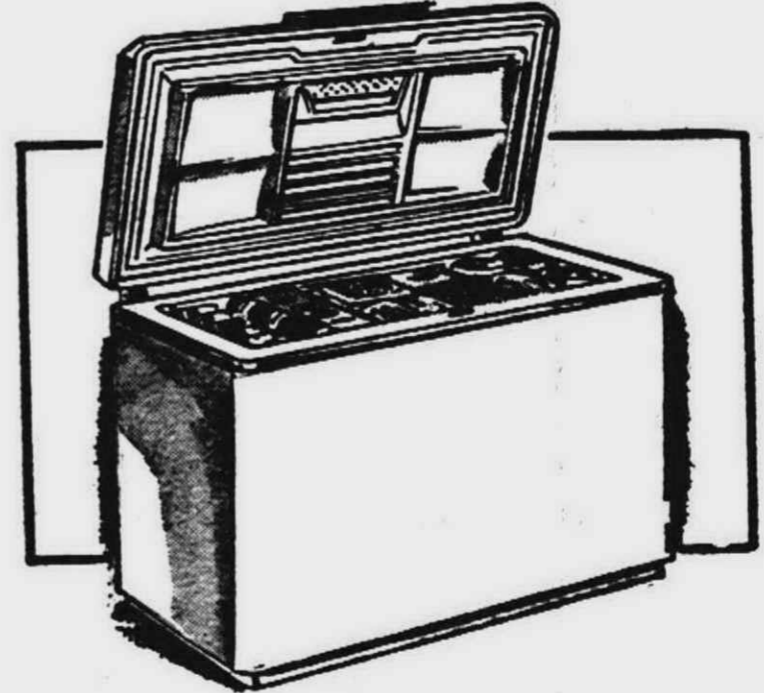
Visi-Matic wringer keeps clothes in sight... washed faster. With 4 casters.

SALE! Coldspot Refrigerators and Freezers



Refrigerator Section Defrosts for You! 14-Cu. Ft. Coldspot \$197 No Money Down

Low price, but loaded with Coldspot features. True freezer at top keeps 108-lbs. food zero safe. Refrigerator with control defrosts for you. Full-width porcelain enamel crisper, 16 egg rack, magnetic doors open flush to wall. Buy now at this low, low price.



Stores and Freezers 598-Lbs. ... Coldspot 17-Cu. Ft. Freezer \$197 No Money Down

Durable porcelain enamel interior is easy to clean, rust and stain resistant. Fast freeze compartment freezes unfrozen food already in storage. One piece rubber collar seals cold in. Counterbalanced lid opens and closes easily. Buy now. Sears Appliances Dept.

NO MONEY DOWN on Sears Easy Payment Plan

**You Can Count on Us... Quality Costs No More at Sears**

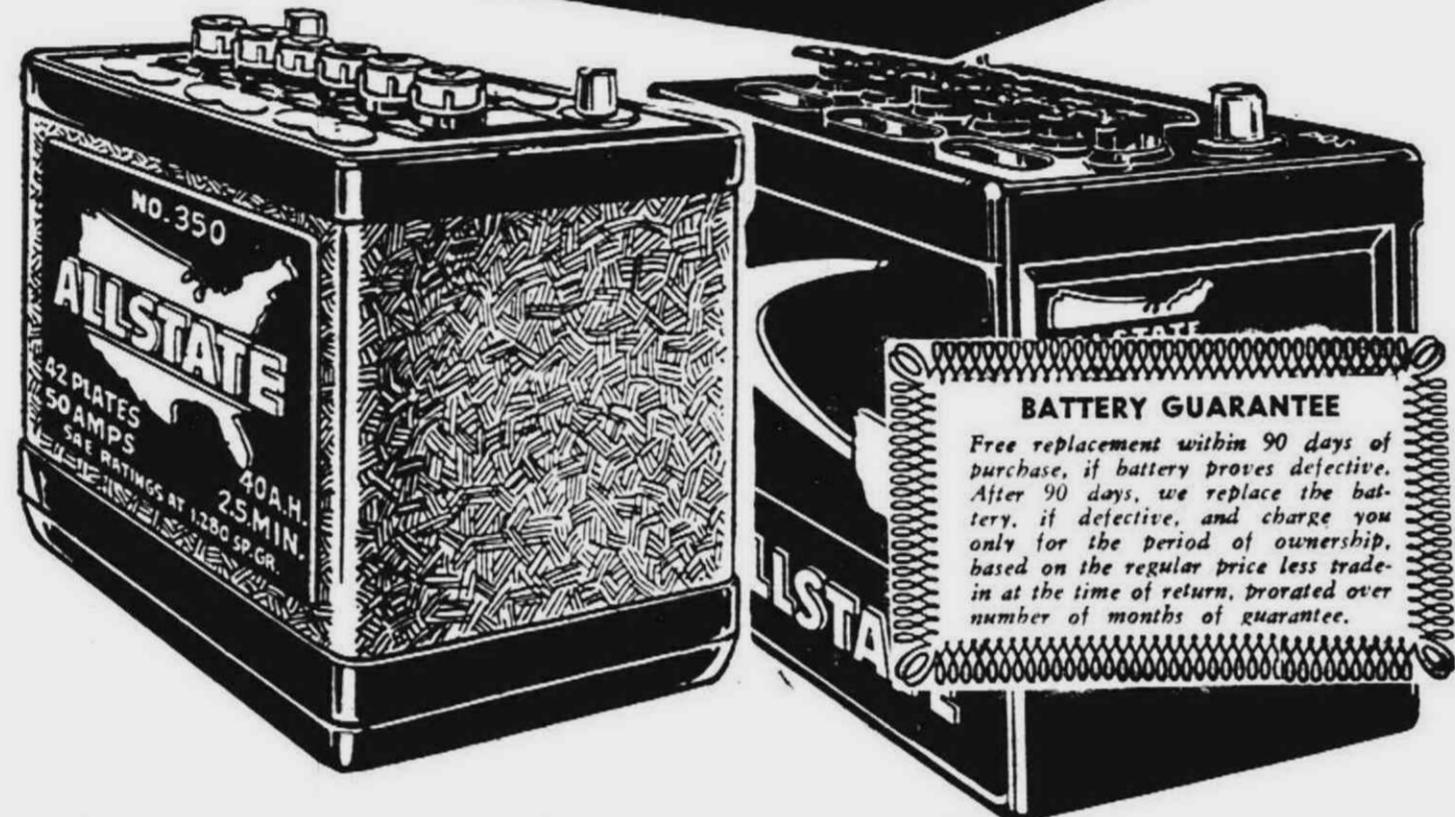


**SHOP ANYWHERE IN TOWN, YOU JUST CAN'T BEAT SEARS FOR HONEST VALUES, EVERY DAY**

**COMPARISON**

Thursday, Friday and Saturday Only!

**SALE**



**Save on Allstate Batteries**

| Car          | Year    | 24 Month Guarantee Sale Price With Trade | 30 Month Guarantee Sale Price With Trade |
|--------------|---------|--|--|
| Chevrolet    | '55-'62 | \$11                                     | \$14                                     |
| Plymouth     | '56-'63 | \$11                                     | \$14                                     |
| Dodge        | '56-'63 | \$11                                     | \$14                                     |
| Ford         | '56-'62 | \$12                                     | \$16                                     |
| Mercury      | '56-'63 | \$12                                     | \$16                                     |
| Pontiac      | '55-'62 | \$11                                     | \$14                                     |
| Buick (most) | '55-'62 | —  | \$16                                     |
| Cad. (most)  | '57-'63 | —  | \$16                                     |
| Oldsmobile   | '54-'63 | —  | \$16                                     |

**24 MONTH GUARANTEE**

Sale Priced **\$11** with trade-in  
 Fits '55-'62 Chev., '56-'63 Ply., '56-'63 Dodge, '55-'62 Pontiac  
 Allstate batteries installed at no extra cost. Drive in for your battery check!

Sears Carries A Complete Line of Foreign Car Batteries

**6-Volt Allstate Batteries As Low As 6<sup>88</sup> exchange**  
 (fits 1940-1954 Chev., Plymouth, Dodge)

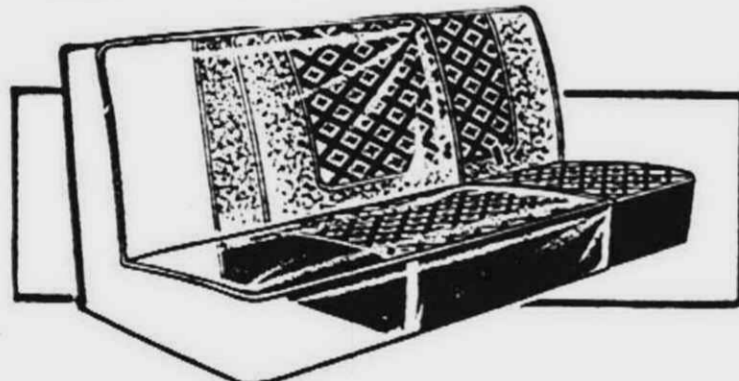
**Allstate Mufflers**



DOUBLE WALL STEEL SHELL...  
 Installation Available **5<sup>49</sup>** ea.

Fits these cars:  
 • '49 to '52 Chev. • '54 to '62 Chev.  
 • '49 to '56 Ford • Most '58 to '59 Fords  
 • Most '49 to '59 Plymouths  
 Except convertibles and station wagons

Designed for good service for a minimum price. Standard baffle-chamber interior design. Allstate quality.



**Clear Plastic Covers**

SEALS OUT SOIL... INSTALLED FRONT, REAR

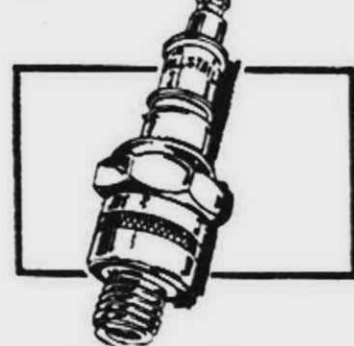
Clear 12 to 13 gauge vinyl plastic made to resist cracking and discoloring, cleans with a damp cloth. "Fade-stop" to filter sun's rays. Save \$4.  
 Reg. 22.95 **18<sup>88</sup>** installed



**Permanent Anti-Freeze ALLSTATE QUALITY**

**1<sup>38</sup>** Gallon

Ethylene-glycol formula. Proved unsurpassed by an other anti-freeze that you can buy. One filling last all winter. Allstate.



**Allstate Plugs**

Regular... For Most Cars  
 These spark plugs meet specifications of original equipment. Replace now!  
**44¢** each



**Battery Charger**

3-AMP... FOR 6 OR 12 VOLT  
 Strong 3-amp charge tapers to 2 amp as charge builds up. Built-in meter. 7-ft. cord.  
**11<sup>88</sup>**



**Tune-Up Kits**

**166** and up  
 Sears best. Condenser, rotor, instructions.



**Ignition Coils**

**398**  
 Ford most cars. Equal or surpass original equipment coils. 6 or 12 volt.



**Distributor Caps**

**99¢** and up  
 Equal to or better than original equipment. Replace now!



**NEW Voltage Regulator**

**498**  
 Controls generator output... protect battery, generator.

**SEARS TIRE GUARANTEE**

IS SIMPLE AS



Sears Tires Are Guaranteed Against Wearout For A Definite Number of Months

Sears Tires Are Guaranteed Against All Road Failures... No Limit on Miles—No Limit on Time.

All adjustments Made At Current Exchange Price, NOT At The Higher List Prices.



**ALLSTATE Passenger Tire Guarantee**

**TREAD LIFE GUARANTEE AGAINST ALL FAILURES**  
 Every ALLSTATE tire is guaranteed against all failures from road hazards or defects for the life of the original tread. If tire fails, we will—at our option—repair it without cost, or, in exchange for the tire, we will replace it charging only for tread worn (charge will be a pro-rata share of exchange price).  
**TREAD WEAR GUARANTEE**  
 We guarantee tread life for the number of months designated. If tread wears out within this period, return it. In exchange, we will replace it charging the current exchange price less a set dollar allowance.  
 \*Exchange Price is regular retail price plus Federal Excise Tax less trade-in at time of return (no trade-in deduction on snow tires).

**24 Month Guarantee**  
 AGAINST WEAROUT... STRONG 4-PLY NYLON TIRES

**4-Ply Nylon Hi-Way Special**

SATURDAY LAST DAY!

**2 for \$18**

6.00x13 Tubeless Blackwall Plus Fed. Tax and 2 Old Tires

- With DYNATUFT Tread Rubber for up to 25% Longer Mileage
- Rugged 4-Ply Nylon Cord
- Special Cut Tread Designed for Stop-and-Go Traction

Sears Tire Dept.

NO MONEY DOWN Use Sears Monthly Payment Plan

| SIZE    | TUBELESS BLACKWALLS Plus Fed. Tax and 2 Old Tires in Trade | TUBELESS WHITEWALLS Plus Fed. Tax and 2 Old Tires in Trade |
|---------|--|--|
| 6.00x13 | 2 for \$18   | 2 for \$24   |
| 6.50x13 | 2 for \$22   | 2 for \$28   |
| 7.50x14 | 2 for \$26   | 2 for \$32   |
| 8.00x14 | 2 for \$28   | 2 for \$34   |
| 8.50x14 | 2 for \$31   | 2 for \$37   |

FAST, FREE INSTALLATION... NO MONEY DOWN

**Allstate Nylon Companion Tire**

15 Month Guarantee Against Wearout. GUARANTEED AGAINST ALL FAILURES—NO LIMIT ON TIME OR MILEAGE

**6<sup>90</sup>**

6.70x15 Tube-Type Blackwall Each Plus Fed. Tax and Old Tire in Trade

**SEARS LIVONIA MALL • 7 MILE and MIDDLEBELT • PHONE 476-6000**

STORE HOURS: MONDAY 9 TO 9 • TUESDAY, WEDNESDAY 9 TO 5:30 • THURSDAY, FRIDAY, SATURDAY 9 TO 9

# Local Government Officials Can Aid Classes In State, Local Politics

ANN ARBOR—Teaching of local government in Michigan high schools needs improvement, according to Stanley E. Dimond, University of Michigan professor of education.

"One approach lies in the in-service education of teachers," says Dimond in an article, "Teaching Local Government in Michigan Secondary Schools," in the September issue of Michigan Municipal Review.

"Recognizing the limitations in the pre-service education of teachers of the government courses, efforts can be made by local officials to contribute to the background understanding of these teachers," says Dimond.

"Older teachers recall that years ago, in Michigan, institutes were held in which local government officials discussed their plans and problems with teachers."

Dimond notes that the Taft Institute demonstrated during the past school year with Detroit government teachers that this approach could be very effective.

"A series of seminars was held on Saturdays to acquaint teachers with the realities of political life at the state and local levels. The opportunity for teachers to meet, hear, and discuss problems with leaders in public life contributed to their teaching effectiveness," he says.

"Planned visitation by business and industry as well as by some social agencies has also been effective in expanding the horizons of teachers. Cooperative efforts, by local officials and social studies teachers for visits to local institutions could result in better teaching," he says.

In addition to upgrading the background of the teacher, improvements may come from providing direct experiences for pupils.

"Availability of local officials to speak before classes can be made known," he says. "Willingness to be interviewed by a committee of pupils is helpful. Providing copies of the city charter, tax dollar leaflets, or budget summaries can add vitality to the generalities of the civics textbook."

Dimond says there is much interest on the part of some social studies teachers in the development of case study materials.

"An interested teacher and a local official could dig up materials for stimulating cases that could be prepared for pupil use. Zoning, elections, garbage disposal, crime rates, or accident prevention are a few examples in which local situations could be developed into cases that would stimulate interest and require thoughtful analysis."

"If improved teaching of local government occurs, it will probably happen because interested local officials find a similar interest on the part of some social studies teacher," he notes. "Cooperation at the simple level of getting acquainted would work wonders."

## College Fraternities Had Fight to Get Recognition

ANN ARBOR—College fraternities in 20th century America have gained a respected place on the campus, but only after considerable struggle.

At the University of Michigan, fraternities, or "secret societies" as they were called, met with bitter opposition at their beginning according to an 1850 faculty report to the Regents.

The report, now part of the collection at the U-M William L. Clements Library, warned that the rise of the secret societies threatened to undermine at least four of the most basic rules of the University:

That organizations are illegal if their purposes are unknown to authorities;

That student rooms should be accessible to University officers at all times;

That no organized meetings shall be held without permission of the faculty;

And that no student shall, without permission, be absent from the premises after 9 o'clock at night.

"In these societies there are young men," continues the report, "of the most dangerous character who wield an influence through this means at which any parent might, with reason, tremble. They are artificial seducers, who are this day, standing between the faculty and the deluded victim of their wiles."

How many "deluded victims" were there in the new societies?

The faculty complained that "a large share of the members are individually honorable young men who have been personally deceived, and with whom we have labored for some days to bring to reason."

The faculty objections to the existence of the new phenomena are detailed in the letter. First, they did not object because the societies were secret, but because they were illegal.

Secret societies as such were not inherently bad. The faculty readily admitted that "one of our faculty is a member of the Odd Fellows and another a member of Phi Beta

### Livonia DPR Starts Ballroom Dancing, Bridge Instructions

Department of Parks and Recreation ballroom dance and bridge classes begin this week with registration at the first sessions:

Ballroom dancing at Bryant Jr. High beginning Wednesday with a beginners' class at 7:30 and intermediate (including Latin American) at 9 P.M.

At Franklin High School beginning Thursday, with an advanced class at 7:30 P.M., and 9 P.M.

Beginners and intermediate classes in bridge, held at Bentley High School start at 7:30 P.M. Thursday.

Kappa, and these two have acted in perfect unison with every movement of the faculty."

Further, the responsibility for the moral character of students, was entrusted by fathers to the faculty and this basic pillar of the university had been undermined.

"The meetings of these organizations," continues the report, "are liable to become, and often are, lawless and convivial. They are held in private houses, beer-shops, and hotels and at hours when, by all law, honest folks ought to be in bed. The transition is easy made to the bar, the grocery, and the midnight haunt."

An impassioned call to arms and a stern warning brought the paper to a dramatic conclusion:

"These clans are now powerful enough to overawe nearly all the college governments of our country. How soon they will have obtained among us the despotic power of disorder and savagism, time, or rather, the sense and firmness of our authorities and the parents of Michigan, must decide."

## Red Cross Head Will Address Detroit Group

General James F. Collins, the newly-elected president of American National Red Cross, will be the principal speaker at the annual meeting of the Detroit Chapter of Red Cross October 8 at Cobo Hall.

General Collins, who is a four-star general and served as the Commander-in-Chief of the U.S. Army in the Pacific from 1942 to the end of World War II, succeeded General Alfred M. Gruenther April 1 of this year.

General Collins' citations and decorations include the Distinguished Service Medal, Legion of Merit, Bronze Star Medal and Air Medal.

It will be the General's first appearance in Detroit since becoming President of the American National Red Cross. The more than 1,000 Red Cross volunteers and guests of the Detroit Chapter are looking forward to the annual meeting and to meeting and hearing General Collins.

### Elected to Board

Professor Lloyd T. Cheney, 16858 Avon Road, department of civil engineering, Wayne State University, has been elected to the board of directors for the American Society of Civil Engineers.

## AMA Says Acne Condition Can Be Corrected By Care

Something can be done about acne. The pimples, blemishes, blackheads and boils that make life miserable for so many teenagers often can be eliminated or considerably reduced by careful attention.

Waiting to "outgrow" your acne can be a serious mistake, says a pamphlet of the American Medical Association.

Acne isn't a serious disease, in that it's not a threat to life and limb, but it can be seriously disfiguring at the time of life when young people are most sensitive about their appearance. Severe acne can lead to permanent scarring.

Acne is caused by poor adjustment of the skin to the secretions of maturing glands. The imbalance in hormone secretions will correct itself in time, usually around the age of 18 or 19.

There are two things to remember in dealing with acne: There is no one-shot cure, no magic pill. Control is a continuing process of simple skin care which you must follow faithfully to have a good complexion.

Second, acne is not a disease of dirt, even though you

are told to wash thoroughly and frequently. The washing is to remove oils and to clear the plugged oil glands, keeping blackheads at a minimum. The blackness of the blackhead is not dirt, but is due to a chemical change in the secretions from the oil glands.

Wash the face two or more times daily with soap and hot water. Wash thoroughly, but gently enough to avoid irritating the skin. Frequent shampooing of the hair also is in order.

Acne is not primarily a dietary disease. Following the

strictest diet will not, by itself, clear your skin. However, some individuals seem to be made worse by very small amounts of certain foods, particularly chocolate, and these persons obviously should avoid such offending foods entirely.

Medical care for acne is best sought early before permanent damage is done. Each physician will have his own particular rules, methods and medications, and the treatment prescribed will vary from patient to patient. Do not assume that the medicines and methods prescribed for a friend will be the best, or even proper, treatment for you.

Your doctor probably will warn against picking, scratching, popping and squeezing of pimples, since this may result in scars. Ask him whether you should open pustules or extract blackheads yourself. If he recommends this, he will show you how to do it without damage.

In some patients other treatments, such as antibiotics or other drugs, ultraviolet light or x-ray therapy, may be selected by your physician. Your physician will determine your specific needs.

### Wayne State Professor

Dr. John Stirling Meyer, 375 Lake Park, Birmingham, chairman of the department of neurology at Wayne State University's School of Medicine and director of neurology at Harper Hospital, has been named to the National Advisory Council to the National Institute of Neurological Diseases and Blindness.

The appointment, effective Oct. 1 for a four-year term, was made by the Surgeon General of the United States Public Health Service.

## Now on display: the most beautiful Chrysler ever built.

This is Chrysler '65. The big one that delivers. Luxury that reflects your good taste, for one thing. A fast answer to your demands, for another.

Look at it. Clean-lined. Big. Beautiful. Eighteen feet of comfort. Two tons of security.

It's easier to get into and out of. There's lots of headroom, and legroom and hiproom.

Get in and drive it. The first thing you'll notice is best described as "scorch." Model 1965 is a very

quick automobile. And there's an improvement in ride you can really feel.

One more point. A Chrysler isn't all that expensive. Seven Newport models are priced just a few dollars a month more than some of the popular smaller cars.

Visit your Chrysler dealer and see them all: economical Newport; sports-bred 300; and the luxurious New Yorker. Move up to Chrysler. Model 1965. The man who sells them will make the move very easy for you.

Gene in Bob Hope and The Chrysler Theatre, Friday evenings; NCAA Football, Saturday afternoons; and the World Series—all on NBC-TV. CHRYSLER DIVISION CHRYSLER MOTORS CORPORATION



Drive it!

New Yorker 4-Door Hardtop

## TODAY'S OUTSTANDING INCOME BARGAIN...

# AN ANNUITY

- Worry Free
- Significant Savings Advantages
- Remarkable Flexibility
- Guaranteed Income Which Cannot Be Outlived

An Annuity is the finest investment plan you can make for your retirement years.

It can be arranged in many different and effective ways to suit your needs. For more information, send the coupon below now, right now, for a free 20-page booklet which explains what an annuity can do for you.

No obligation, of course.

MAIL THIS COUPON NOW

Please send me the booklet: "The Annuity—Today's Greatest Income Bargain."

Name \_\_\_\_\_

Address \_\_\_\_\_

City \_\_\_\_\_ Zone \_\_\_\_\_ State \_\_\_\_\_

Mail to: Shel Eisen, Ray Ebock  
35275 Plymouth Road, Livonia

Metropolitan Life  
INSURANCE COMPANY  
NEW YORK, N. Y.

# B. J. RATIGAN CHRYSLER-PLYMOUTH, Inc.

30777 PLYMOUTH ROAD

# New Law Helps All, Buy Better Homes-Low Payments

More Americans will be able to buy better homes with the help of a section of the recently-enacted housing law of 1964, Paul L. Fisher, general manager of the George H. Wietersen Company, Detroit, and president of the Western Wayne-Oakland County Board of Realtors, pointed out Monday.

The portion of the new law referred to by Fisher is an amendment to Sec. 203 (b) of the program of the Federal Housing Administration. It increases the maximum home mortgage limits which may be insured by the agency from \$25,000 to \$30,000 for one-family houses; from \$27,500 to \$32,500 for two- and three-family houses; and from \$35,000 to \$37,500 for four-family houses.

This part of the new law was among those sections of the 1964 bill supported by the National Association of Real Estate Boards, of which the Western Wayne-Oakland County Board of Realtors is a member.

"The most significant thing about this new provision is that it will make it possible for purchasers to buy a better house for a lower down payment," Fisher said. "Here are a few examples:

"Under the old law, a family buying a home valued at \$29,000 had to make a down payment of \$4,000 in order to qualify for FHA-insured financing; under the new law, the minimum down payment on the same home can be as low as \$3,200.

"Under the new law, a family seeking a house valued at \$34,600 may purchase it with a down payment \$5,000 lower than under the old law, which required anything in excess of the \$25,000 mortgage to be added to the down payment. The down payment, under the new law, would be \$4,600 as compared to \$9,600."

It is noteworthy, too, that—as FHA has said—the increase in the agency's home mortgage limit recognizes the recent general high level of prosperity, an increased purchasing power, which enables families to meet higher mortgage payments on larger and better homes, the Realtors leader said.

He added that many families are now enjoying current incomes that will easily sustain the higher monthly mortgage costs, although they may not have had the time to accumulate the higher lump sum down payments required under the old law. It is in

this situation that the new provision will enable them to put their home purchase plans into effect without the delay that might have been

necessary up to now.

If home purchases under the new FHA section follow the recent pattern, Fisher observed, existing houses will dominate

buyer choices. According to the latest figures, more than three out of every four home mortgages insured by the agency had existing homes as security.

"There are many reasons for this enduring popularity of the pre-owned home," Fisher said. "A well maintained existing home in a good neighborhood

has proven its value. It has been through the 'shake down' period, and any flaws that may have existed originally usually have long since been spotted and re-

medied. "In addition, many such homes offer real values in living amenities in the form of larger lots and rooms, estab-

lished shrubbery and landscaping, and a complete array of civic services, such as schools, roads, shopping centers, and churches."



## Meat for Hearty Menus

All Food Fairs  
Open Daily, 9-9  
Saturday, 8-9

**SNAPPY WEATHER MEANS HEARTIER APPETITES!**

Flavorful smoked ham, perfect as is, or glazed with apricot preserves for something special. Plump, meaty pork chops—good as only Food Fair knows how to buy 'em! Just begging to be stuffed with a savory bread dressing.

Marvelous sirloin steak that everyone loves—and so specially good with onion rings and whipped or french fried potatoes. And remember, whatever meats you buy at Food Fair, they're better 'n' good! They're choical!



SUGAR CURED, TENDER  
**Smoked Ham**  
39¢  
Shank Portion LB.  
Butt Portion or Whole Ham, lb. 49¢

U.S. CHOICE BEEF  
**Sirloin Steak**  
99¢  
LB.

LEAN, CENTER CUT  
**Pork Chops**  
79¢  
LB.

50 Extra S&H Green Stamps  
With The Purchase Of Fresh  
**Hamburg**  
3 Lb. Pack \$1.29  
with this coupon thru Saturday, Oct. 3rd.

FIRST 7-RIB CUT  
**Pork Loin Roast**  
lb. 39¢  
ALL SOLID MEAT  
**Boneless Leg O' Veal**  
lb. 69¢  
GLENDALE JUICY  
**Skinless Franks**  
1-lb. Pkg. 39¢  
PETERS LARGE  
**Sliced Bologna**  
1-lb. Pkg. 39¢

### State Police Marksmen Win Meet

Michigan State Police pistol marksmen captured top honors for teams and individuals in the eighteenth annual Indiana State Police invitational matches at Putnamville, winning six team trophies.

The State Police won the team grand aggregate while second place went to the Missouri Highway Patrol and third to Detroit Police.

The State Police team was first in the .45 caliber event, second in the .22 and fifth in the .38. New York State Police won the .22 while Missouri was first in the .38.

State Police Tpr. Richard Brantner, of the Jackson post, won the high individual aggregate with 2600 out of a possible 2700.

Shooting in the three-day event for the State Police in addition to Brantner were Troopers Elwyn Burnett and Lester Doubleday, East Lansing; Dorr Wiltse, Ionia; Fred Wille, Flint; William Bayn, Bridgeport, and manager-coach Cpl. Bernard Schrader, East Lansing headquarters.

### Painters Are Loners, Says U-M Expert

ANN ARBOR—The painter is a lonely man, says Michael P. Church, assistant director for cultural activities of The University of Michigan Extension Service.

"Musicians, by their very nature, are a gregarious lot," says Church. "They are at their best when they find themselves in duets, trios, quartets, octets, choirs, symphonies and other sundry assembles," he notes.

"And as you might expect, the music teachers of the state and those interested in music, as well as performers, are impressively well organized," Church states.

"The lonely painter, on the other hand, likes to do solo flights in his creative excursions," says Church. "Maybe this, in part, explains why artists do not like to be organized. And it may also explain, in part, why school boards, in trimming lean budgets, find it easy to eliminate art programs and art teachers."

Often the man who holds the key to the situation lacks the ambition to see it through.

New Crop Apple Harvest Sale!  
McINTOSH AND JONATHAN  
**Michigan Apple Sale**  
4 Lb. 39¢

CHOICE OF 10 VARIETIES  
**Campbell's Veg. Soups**  
Per Can 10¢  
With Coupon Below  
Limit 2 Cans

Zip-Open Tab Can!  
FROZEN, CONCENTRATED  
**Farm Maid Orange Juice**  
4 6-Oz. Cans 89¢

DUTCH PROCESSED  
**Farm Maid Chocolate Milk** Qt. 19¢  
PURE AND RICH  
**Farm Maid Coffee Cream** 1/2-Pt. 19¢  
FARM MAID CULTURED  
**Old Fashioned Buttermilk** Qt. 19¢  
DAIRY-RICH GRADE 'A'  
**Fresh Creamery Butter** 1-Lb. Print 63¢  
GENTLY SPICED... OVEN-FRESH  
**Lady Linda Pumpkin Pie** Each 39¢

PIECES & STEMS OF TENDER  
**Oxford Royal Mushrooms** 2-Oz. Can 10¢  
ALWAYS FREE FLOWING!  
**Morton's Table Salt** 26-Oz. Box 10¢  
5 POPULAR FLAVORS  
**Hi-C Brand Fruit Drinks** 12-Oz. Can 10¢  
W. N. CLARK'S FINEST QUALITY  
**Peas or Cut Green Beans** 8-Oz. Can 10¢  
WHITE, EMBOSSED LUNCHEON SIZE  
**Charmin Table Napkins** Pkg. of 60 10¢

NEW! SPAGHETTI, HASH, FRANKS & BEANS  
**Swanson TV Dinners** 3 Pkgs. \$1.00  
LLOYD J. HARRISS FROZEN  
**Family Size Cherry Pie** 24-Oz. Pkg. 39¢  
PURE PINEAPPLE OR BLENDED  
**Dole Frozen Juice Sale** 4 6-Oz. Cans 89¢  
HILLS, CHASE & SANBORN OR  
**Maxwell House Coffee** 2 Lb. Cans \$1.49  
SPECIAL LABEL VACUUM PACKED  
**Beech-Nut Finer Coffee** 2 Lb. Cans \$1.39

REGULAR OR 1-CALORIE  
**Vernors Ginger Ale**  
12-Oz. Can 10¢  
With Coupon Below  
Limit 6 Cans

REFRESHING AND HEALTHFUL  
**Cypress Gardens Orange Drink**  
32-Oz. Can 10¢  
With Coupon Below  
Limit 2 Cans

WHITE CLOUD  
**Delsey or Scot Tissue**  
Per Roll 10¢  
With Coupon Below  
Limit 4 Rolls

Clip These Valuable Food Fair Coupons for Extra Savings!

REGULAR OR 1-CALORIE  
**Vernors** 12-Oz. Can 10¢  
With coupon and \$3 purchase, excluding beer, wine and tobacco products, thru Saturday, October 3rd. Limit: 1 coupon.

10 KINDS! CAMPBELL'S  
**Vegetable Soups** Per Can 10¢  
With coupon and \$3 purchase, excluding beer, wine and tobacco products, thru Saturday, October 3rd. Limit: 1 coupon.

CYPRESS GARDENS  
**Orange Drink** 32-Oz. Can 10¢  
With coupon and \$3 purchase, excluding beer, wine and tobacco products, thru Saturday, October 3rd. Limit: 1 coupon.

WHITE CLOUD, DELSEY OR  
**Scot Tissue** Per Roll 10¢  
With coupon and \$3 purchase, excluding beer, wine, tobacco and bakery products, thru Saturday, October 3rd. Limit: 1 coupon.

50 EXTRA S&H GREEN STAMPS  
with this coupon and \$5 purchase or more, excluding beer, wine, tobacco and bakery products, thru Saturday, Oct. 3rd. Limit: 1 coupon.



- 35323 Plymouth at Yale Livonia
- 27428 W. 6 Mile at Inkster Livonia
- 27200 Joy Road at Inkster Redford Township
- Wonderland Shopping Center Livonia
- 23632 Plymouth at Telegraph Redford Township
- 27415 Schoolcraft at Inkster Redford Township
- 8244 Merriman near Ann Arbor Trail Garden City
- 705 South Main at Linden Plymouth

Prices effective thru Sat., Oct. 3. Right reserved to limit quantities.