

10 CENTS

The PLYMOUTH MAIL

PHONE YOUR CLASSIFIEDS BEFORE NOON MONDAY GL 3-5500

Vol. 74, No. 10 3 Sections, 20 Pages THE MAIL IS HOME OWNED — COMPLETELY PUBLISHED IN PLYMOUTH — BY PLYMOUTHITES — FOR PLYMOUTHITES Plymouth, Michigan 10 Cents \$4.00 Per Year In Area \$5.00 Elsewhere In U.S.A.

Community College Trustees Organize

Chamber Told How Business Can Take Action

Advice on how the average citizen can help sell his own community to others was given by Roblee B. Martin, president of the Dundee Cement Co. and chairman of the Michigan Industrial Ambassadors, who was the guest speaker at Monday night's 40th annual meeting of the Plymouth Community Chamber of Commerce.

The advice came in the speaker's listing of 12 ways in which industry, management and business can take action to brighten Michigan's future.

"We must learn how to sell again," Martin declared in his address. "Too many in the business of selling act like they are doing you a favor." He noted that in several cases he knows of, industrialists had selected a site for their new plant, and then when they walked into the barbershop, took a taxi or went into a restaurant, they got unfriendly, and sometimes sassy treatment.

"I know of at least one case where they decided not to locate there and they started looking all over again."

Martin's address came at the end of the program held at the Junior High School cafeteria with 190 Chamber members and their guests present. Frank Henderson was toastmaster. Among the guests were Plymouth Township and City officials.

the Board of Education and several members of the Community College Board of Trustees.

George Lawton, president of the Chamber during the past year, became the first person to assume the presidency for a second year. Other officers introduced were Frank Palmer, vice-president; John R. Herb, secretary; and John Wiltse, treasurer. These three are also new members this year. Continuing as members are Miss Margaret Dunning, James Thomas, Harold Guenther, Wendell Lent, Arnold Johnson, James Sponseller and Charles Stofko.

Certificates were presented to the three retiring members, William Sempliner, Sylvester Cooper and Carl Shear. Cooper was general chairman of the dinner.

A. M. Robertson, manager of the Plymouth Branch of Detroit Bank & Trust, had been elected.

(Continued on Page 8)



HOLDING ITS FIRST official meeting last Saturday was the Board of Trustees of the Northwest Wayne County Community College. Ralph Johnson, president of the Wayne County Board of Education, is shown (standing) congratulating the new Board chairman, Harold Fischer of Plymouth. Seated, from left, are Ward McCain, secretary; Mrs. Jane K. Moehle, vice-chairman; Chairman Fischer; Charles Kirkpatrick, treasurer. Standing are Charles Brake, county superintendent of schools; Johnson; and Paul Mutnick, James O'Neil and Clarke Oldenburg, trustees.

Local Members Are Chairman, Vice-Chairman

Harold E. Fischer of Plymouth was elected chairman of the Board of trustees of the newly-established Northwest Wayne County Community College at an organizational meeting held last Saturday afternoon. Another Plymouthite, Mrs. Jane K. Moehle, was elected vice-chairman.

The brief session was held at the proposed college's office in Newburgh School, Livonia. The first official meeting was called, as specified by law, by the president.

Johnson presided until Fischer was elected by acclamation. Serving as temporary secretary was County Superintendent of Schools Charles Brake, a former Plymouth resident.

Elected a long with Fischer and Mrs. Moehle were Ward McCain of Livonia, secretary; and Charles Kirkpatrick, Livonia, treasurer.

Chairman Fischer then appointed chairmen of the five key committees. They were:

- Curriculum Committee, Paul Mutnick of Clarenceville.
- Facilities Committee, L. Clarke Oldenburg of Garden City.
- Personnel Committee, James O'Neil of Livonia.
- Finance Committee, Charles Kirkpatrick.
- Organization and By-Laws Committee, Mrs. Moehle.

Since its election on Oct. 24, the Board of Trustees has held two brief unofficial sessions. These meetings were exploratory in nature with most of the time being spent becoming acquainted.

The Board expects to spend several more meetings in perfecting its organization, during which it hopes to decide what kind of Community College the Board and people of the district want.

So far, the Board has no funds for its treasury. It is expected that it will decide to put a one mill levy on the June school

ballot for construction and operation of the college.

A group of some 25 friends, relatives and those interested in the college's future sat in on the first meeting Saturday. The only item of business to come before the board was a resolution extending thanks of the board to the individuals who worked "unselfishly through the years to secure a Community College in the area and that particular thanks be extended to those citizens who spent many hours of time and effort working as members of the Study Committee and the Education and Action Committees.

Chairman Fischer particularly cited two men present, Dr. Raymond Young of the University of Michigan, who supervised the original survey; and Eric Bradner, the present coordinator. Tribute was also paid to Dr. Albert Amermann, the first coordinator.

The Board's first chairman, Harold Fischer, is a local horticulturist. He was president of the Plymouth Board of Education and has been a member of the proposed college's Executive Committee since it was organized. He has been chairman of this committee for the past year.

Mrs. (John W.) Moehle is a housewife and has experience as a member of several college faculties as well as comprehensive academic training.

Street Lighting, Traffic Flow Among Projects Being Tackled by Chamber

A five-pronged program to bring Plymouth's shopping center into a sharper competitive position is being pushed by committees of the Plymouth Community Chamber of Commerce as a new year begins.

The immediate programs being drafted are:

1. A street-lighting program, with downtown lighting being replaced by brighter lighting.
2. A traffic-flow plan with several one-way streets to implement a smoother movement of traffic.
3. A parking program, which is a continuation of a long-standing program to provide as much off-street parking as possible.
4. Improvement of Kellogg Park. This is in cooperation with a number of civic groups, individuals and the City of Plymouth.
5. Adoption of some type of symbol for Plymouth and

sections of street one-way. This would include Penman, from Ann Arbor Trail to Harvey; Harvey St., from Penman to Ann Arbor Trail; and Ann Arbor Trail, from Main to the Penman Ave. point.

Traffic would flow westward on the Penman portion, southward on the Harvey St. portion, and eastward on the Ann Arbor Trail portion. The chief bottleneck is on Penman Ave. where it is felt that one-way flow would do much to remedy the situation. Penman, from Main to Harvey, is also being considered for widening and resurfacing.

The proposed traffic flow plan would also provide for additional parking spaces, because an angle parking could be substituted for the present parallel parking in some areas. A trial period would be proposed.

The Chamber's interest in parking will focus this year not only on more spaces, but better identification of the present parking areas. Larger signs pointing to City parking lots will be proposed. The City is now starting an enlarging program in the Central Parking Lot.

Kellogg Park, the City's center, has possibilities of becoming a greater spot of beauty, according to those who are promoting a study by a landscape architect. Individuals, businesses and organizations have advanced \$600 so far to have a design made by Johnson Roy, landscape architect and site planners. While the Chamber is just one of the organizations interested in the project, it fits well with the entire scheme of uplifting downtown Plymouth.

The Chamber Board of Directors is considering the adoption of some type of symbol that can be used at the community's entrances and in promotional materials to designate Plymouth. Making attractive the community's entrance is also of interest to the Chamber.

McIntosh pleaded guilty before Justice of the Peace John Foote and was bound over to Circuit Court. Norwood stood mute and an examination has been set for this Friday.

Detectives said that the pair entered the station at 2:04 a.m., one carrying a hammer and the other a piece of steel. They informed the attendant, Jerry Forbing, that it was a holdup. From the cash register they took a round \$150, detectives said, and Forbing was locked in a storeroom.

Breaking out of the room, Forbing called the Road Patrol. He recalled that the car used by the two had been in the station earlier that evening for water and that lettering on the side had the word "Ladies" in it.

Deputies recalled such a car as belonging to Norwood and they first checked a Northville Rd. address and learned that he was staying in a Michigan Ave. motel. Visiting the motels, they found a 1954 car with "Ladies Lounge" and Norwood and McIntosh were arrested in their motel room.

The two men were identified in a line-up that night by Forbing but both denied the hold-up. But later in the morning, detectives got the two to admit the theft.

The service station, open all night in the past, is now closing at midnight for the safety of its employees, the owners said.

Dollar Days Offering Big List of Bargains

Friday and Saturday are Dollar Days in Plymouth and a host of money-saving buys are being offered shoppers in special advertisements appearing in this issue.

From bongo drums to electric dryers—prices have been cut on several hundred items during the two-day special sale.

Among the stores taking part are Better Home, Bob's Paint Spot, Papes' House of Gifts, D & C Store, Minerva's, Davis & Lent, Kresge's, Wimsatt Appliance Shop, Famous Stores, Fashion Shoes, Plymouth Men's Wear, Pease Paint and Wallpaper, Evans' Furniture, Agnew's, Dunning's, Melody House, Craig's Ladies' Apparel, Graham's, Fisher's Shoes, Bluford Jewelers, Western Auto, Loper Tire, and Ye Old Shoe Shine and Hat Cleaning Parlor.

Even The Plymouth Mail, which has little to sell except newspapers and printing, is participating. A coupon appears giving \$1 off on a year's subscription. The price will be \$3 instead of \$4 during the two days.

Ministerial Assn. Planning Union Thanksgiving Service

Union Thanksgiving Services will be held Thanksgiving morning at First Methodist Church, the Plymouth Ministerial Association announced this week.

The service will be from 9 to 9:45 a.m. Delivering the sermon will be the Rev. Edward W. Castner, associate minister of First Presbyterian Church. A vocal solo will be offered by Mrs. George Griggs.

Most pastors of local Protestant churches are affiliated with the Ministerial Association and their congregations, along with all others interested in Thanksgiving worship, are being invited to attend the annual inter-denominational service.

Award-Winning Pianist Is Soloist At Sunday's Symphony Concert

William Boot, 1961 recipient of the Grinnell Foundation Piano Award, will be the featured soloist this Sunday, (Nov. 19) when the Plymouth Symphony Orchestra presents its second of the season. As in the past the concert will be held in the High School Auditorium at 4 p.m. and there will be no charge for admission.

Mr. Boot is currently studying piano at the Juilliard School of Music in New York. His early musical study started five years prior to his entering the University of Michigan. At the University he studied with Benning Dexter and also with Eugene Bossart in the field of ensemble and chamber music.

He received his bachelor of music at the University of Michigan in 1960 and was awarded his master's the following year. In addition to the recent Grinnell Award, Sunday's soloist has also won the 1961 Concert Contest sponsored by the Bohemian Musicians Assn. of Detroit. A native of Grand Rapids, Mr. Boot has presented recitals throughout the state and has appeared with the Detroit, Grand Rapids, and University of Michigan Symphonies.

"Concerto No. 1 in D, Minor" by Brahms will be the highlight of Sunday's concert. In this selection Mr. Boot will be joined with the orchestra. Originally intended as a symphony, this first concerto composed by Brahms was revised considerably before emerging in the final form. It has often been said of Brahms' concertos that they are symphonies with instrumental obbligatos. The symphonic proportions which Brahms so admired in Beethoven he achieved in his own right whenever he wrote for orchestra.

Another composition by Brahms is being included on the program. The "Academic Festival Overture" was written in 1879. It was at this time that the composer was given a degree of Doctor of Philosophy by the University of Breslau. As an expression of gratitude he wrote this work in the spirit of the occasion utilizing German student songs some of which were very old.

The activities of Serge Diaghileff and his Russian Ballet inspired an awesomely large list of masterpieces, including Ravel's "Daphnis and Chloe" which will be presented Sunday.

(Continued on Page 8)

Served Since 1908 It's Goodbye Main St. Bricks

By Jim Sponseller

"No longer will the traveling public and visitors point their finger of shame at us and taunt us with the wretched condition of our Main St."

This was a statement from The Plymouth Mail in November 1908 when the last bricks were laid in place for the village's first paved street. Last week, the last of the original bricks were covered over when paving machines moved in on the block in front of Kellogg Park.

In 1908, it took \$20,000 to brick Main St. from Ann Arbor Trail to Mill St., a job that took four months.

Last week, it cost \$3,333 to apply the blacktop cap on the one block — a job that took a day of preparation and less than a day to lay.

The 1908 bricks are still in service, however. They remain sealed under the present road as part of the sturdy base.

According to one local historian, Karl Starkweather, the entire bricklaying job was done by one man. He was reported to be a "whirlwind" bricklayer and crowds gathered around him daily to watch him work during the summer of 1908.

It was not an easy job to finance the project. Editorials in The Plymouth Mail called the road the worst Main St. in Michigan.

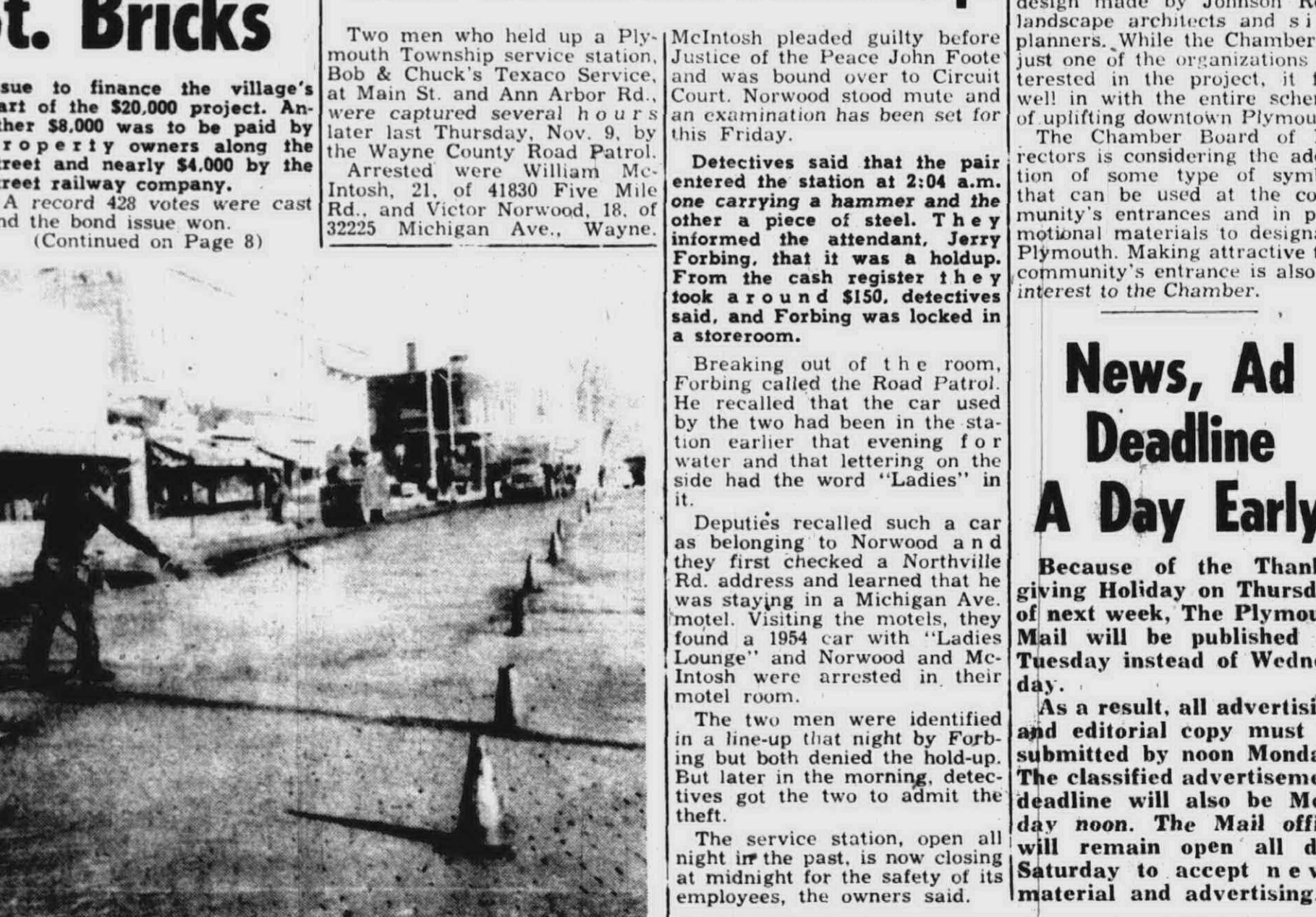
In the summer of 1907, village voters turned down a brick pavement proposition, claiming that a macadam street would answer all purposes and make an excellent pavement.

So in March 1908, the Council put another proposition on the ballot asking for an \$8,000 bond issue to finance the village's part of the \$20,000 project. Another \$8,000 was to be paid by property owners along the street and nearly \$4,000 by the street railway company.

A record 428 votes were cast and the bond issue won.

(Continued on Page 8)

Pair Nabbed After Gas Station Holdup



IT'S GOODBYE BRICKS. The last Main St. bricks disappeared beneath the surface of a blacktop cap last week in front of Kellogg Park. Laid in 1908, the bricks will continue to serve as the road base. An alley circling the Central Parking Lot was also re-paved.

PHS Students Present Comedy This Weekend

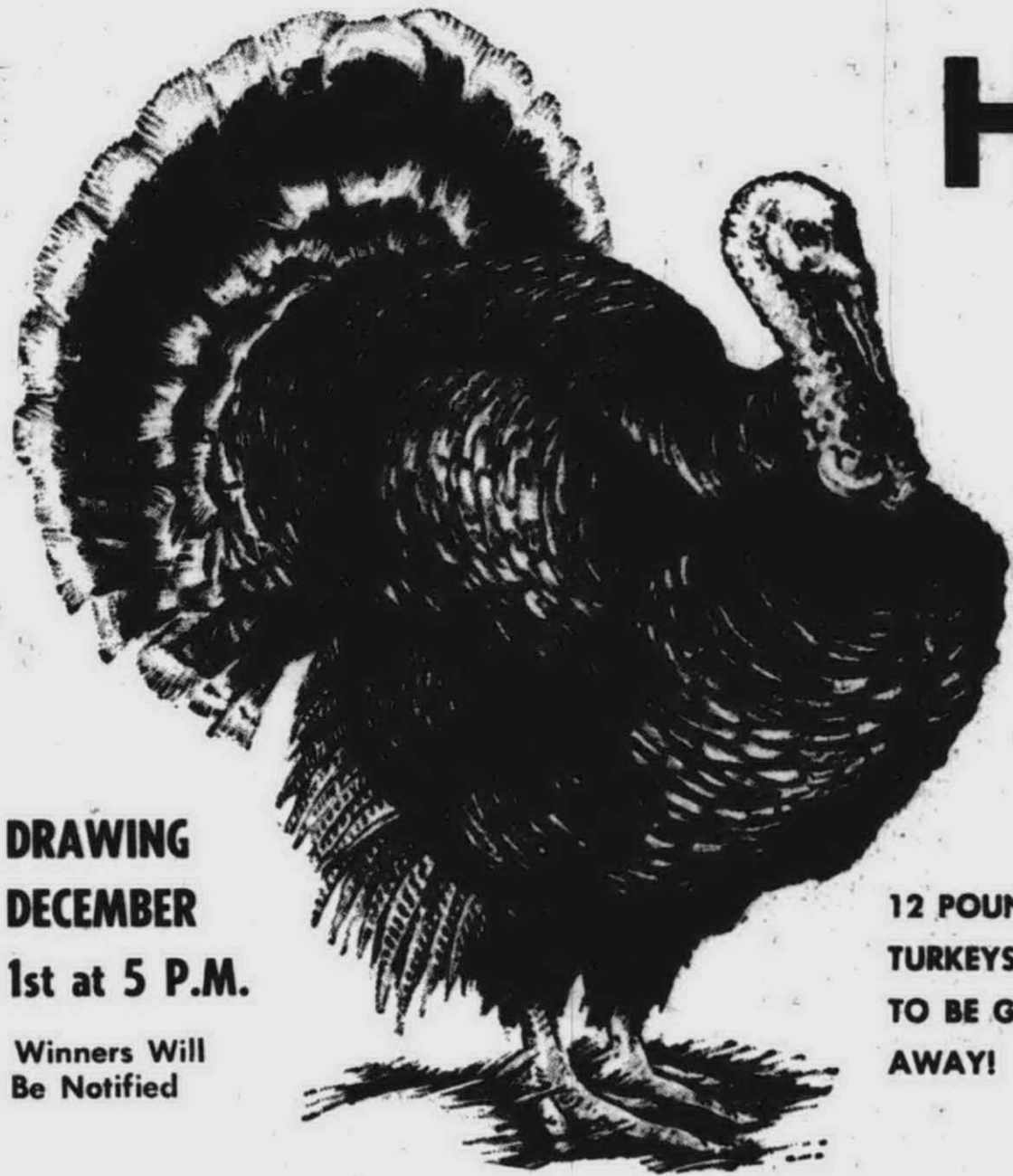
The classic comedy, "You Can't Take It With You," will be presented by Plymouth High School students this Thursday and Friday nights with 19 students filling the cast.

Starting at 8 p.m., the play will be in the High School Auditorium.

Weeks of work have been spent in building the set, perfecting the lighting, sound and make-up. These effects will be combined with the acting talents of Dick Illy as the eccentric but often level-headed Grandpa, Sue Hawes and Frosty Morgeson as the romantic duo, and a supporting cast of Linda Wall, Gay Shirey, Pam Stokes, Steve Bullington, Earl Collins, Win Schrader, Mike Kenyon, Art Johnson, Joyce Bradley, Barry Corwin, Hollis Hayes, Phil Bender, Graham Warner, Dan Tomohlen, Liz Dobos and John Augustine.

Tickets purchased at the door are \$1 and students are 75 cents.

NEED PRINTING? — Call Walt at The Plymouth Mail — GL 3-5500



**DRAWING
DECEMBER
1st at 5 P.M.**
Winners Will
Be Notified

12 POUND
TURKEYS
TO BE GIVEN
AWAY!

Have A TURKEY On Us!

Smart Shoppers Know It Always

PAYS TO SHOP IN PLYMOUTH

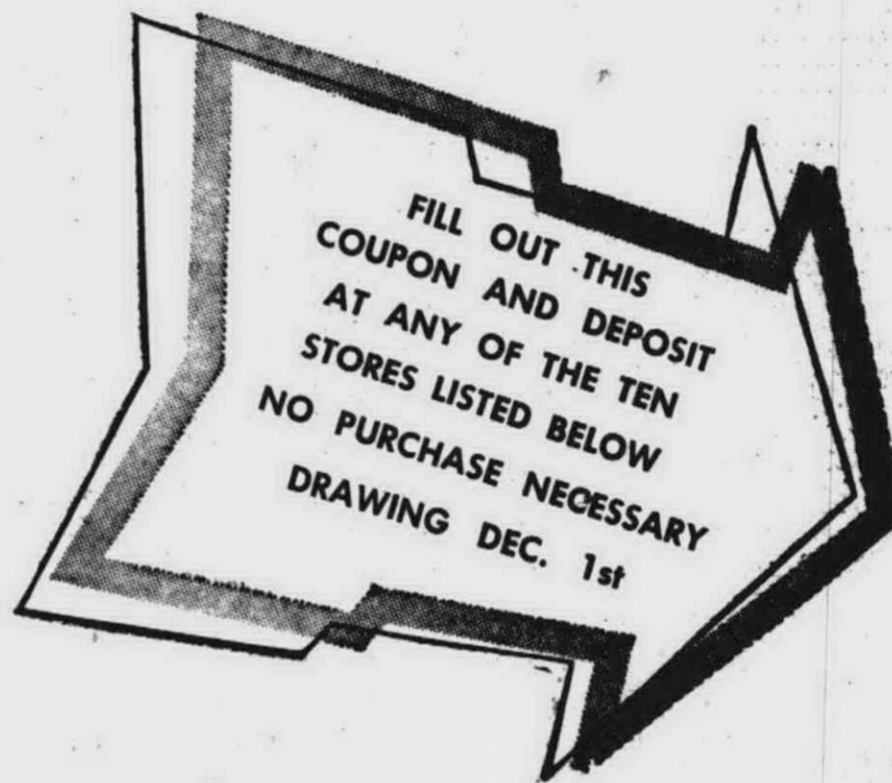
With A PLYMOUTH COMMUNITY CHARGE CARD...
Which Can Be Used At Any of the 10 STORES LISTED BELOW:

5 FREE TURKEYS

FACTS ABOUT THE PLYMOUTH COMMUNITY CHARGE PLAN

Your Plymouth Community Charge Plan was set up with you in mind. It provides efficient service charges and optional payment plans, plus the convenience and friendliness of shopping at home. Many, many Plymouth residents are presently a part of the plan. We invite you to open your Community Charge Account at any one of our ten stores. You'll be glad you did . . .

You may use Plymouth Community Charge cards for reference anywhere in Michigan.



NOTHING TO BUY — FILL OUT COUPON DEPOSIT AT ANY OF THE 10 STORES

TURKEY COUPON — DRAWING DEC. 1st

Mr. _____ Husband _____
Mrs. _____ Wife _____
Address _____
City _____ Phone _____

Deposit Your Coupon at Any of the Following PLYMOUTH STORES Before December 1st

BEITNER JEWELRY
904 W. Ann Arbor Trail
GL 3-2715
Expert Jewelry and Watch Servicing

CADILLAC DRAPERY
127 S. Main Street
GL 3-5470
Interior Decorating in Home Service
Custom Draperies

CARL CAPLIN CLOTHES
Aboard The Mayflower
GL 3-0790
Custom Clothes for Men

DAVIS and LENT
336 S. Main Street
Men's Clothes — Sporting Goods
Boys' Wear — Teen Shop

DUNNING'S
500 Forest Avenue
GL 3-0080
Plymouth's Department Store for
Women — Children's Wear
Yard Goods

THIS COULD BE YOUR
Plymouth Shoppers CHARGE CARD
Be assured of
Service — Quality — Friendliness
CUSTOMER'S SIGNATURE _____
Get Full Details from Any of the Plymouth Stores
Listed in This Ad . . . You Are Not Obligated in Any Way.

MINERVA'S
857 Penniman - Opp. Post Office
GL 3-3065
Clothes for Women and Children

FISHER'S SHOES
"Your Family Shoe Store"
290 S. Main Street
GL 3-1390
"Serving Western Wayne County"

Plymouth Lumber & Coal
308 N. Main Street
Serving Plymouth Area for 52 Years
Complete Modernization and
Lumber Supplies

SAXTON FARM SUPPLIES
587 W. Ann Arbor Trail
GL 3-6250
GARDEN CENTER SUPPLIES

WILLOUGHBY SHOES
322 Main Street
GL 3-3373
"Shoes for the Entire Family"

PLYMOUTH COMMUNITY CHARGE PLAN

500 SOUTH HARVEY

PHONE GL 3-0522

PLYMOUTH, MICH.

For Your Shopping Convenience
PAPES' House of Gifts
 Will Be Open
UNTIL 9 P.M.
THURS. - FRI. - SAT.
NOV. 16-17-18
 Starting Monday, Nov. 27
 We Will Be Open
EVERY NIGHT UNTIL 9
 Up To Christmas

PAPES' House of Gifts
 852 W. Ann Arbor Trl. — Plymouth — GL 3-0656

HOLIDAY
PREVUE

... you're invited!

COME ... and see what we have in original ideas especially designed to intrigue you with holiday decor.

COME ... have a bit of punch and holiday cookies with us.

COME ... between 12 and 9 o'clock the Sunday before Thanksgiving, November 19th. Betty, Dewey, Frank and I will be there to greet you.

Cordially,
 Lila

LILA'S Flowers & Gifts
 "In The Heart of Northville"

ANNOUNCING...The All-New FAIRLANE and FAIRLANE 500



FAIRLANE CLUB SEDAN



FAIRLANE 500 CLUB SEDAN

*Some cars have new names...
 ...this name has a new car!*

Just right for just about everybody...
 right size... right price...
 right between Galaxie and Falcon

See the All-New FAIRLANE and FAIRLANE 500 Starting Thurs., Nov. 16

NOTICE

YOU MAY WIN ONE OF THE FIVE ALL-NEW FAIRLANE TUDORS BEING GIVEN AWAY THIS WEEKEND AT FORD DEALERS IN THE METROPOLITAN DETROIT AREA. STOP IN THURS. - FRI. - SAT. AND REGISTER AT . . .

PAUL J. WIEDMAN, INC.
 Ford Sales and Service
 470 S. MAIN PLYMOUTH



LONG RANGE plans for a thoroughfare to circle Plymouth's downtown was given an inspection by the Chamber of Commerce annual meeting speaker, Roblee Martin, second from right, and Chamber officers. From left are John Wiltse, treasurer; Frank Palmer, vice-president; John Herb, secretary; Martin; and George Lawton, president. Palmer, Wiltse and Herb are also new directors this year.

Symphony
 (Continued from Page 1)

also. Nearly every composer of note who was at work during the first quarter of the 20th Century was commissioned to write a ballet score for Diaghileff, but "Daphnis and Chloe" is unique among the compositions of Ravel. Here the French master of small, exquisitely jeweled forms abandoned his accustomed ways to create, in his own words, "a vast musical fresco". It is the only composition of his life which is planned on monumental lines. It is, in a sense, Ravel's one and only symphony. The first performance took place in Paris in 1912 with Pierre Monteux conducting.

Evans Furniture Quitting Business

Evans Discount Furniture and Appliances this week opened its going-out-of-business sale.

The firm was originally on Forest Ave., and was heavily hit by a fire last January. Since then the business has been on N. Main St., across from the Kroger Store.

TWO HATS



CLEANED AND BLOCKED FOR ONLY \$3.00

SHOES SHINED DRY CLEANING

4 SHIRTS CLEANED \$1.00

Ye Old Shoe Shine AND Hat Cleaning Parlor
 491 S. Main GL 3-9687



WHEELCHAIRS
 WALKERS
 COMMODES
 SURGICAL SUPPORTS

CRUTCHES
 CANES
 TRACTION

WILTSE'S COMMUNITY PHARMACY
 330 S. Main St. GL 3-4848

It's Goodbye
 (Continued from Page 1)

But when bids were taken in May of that year, it was found that brick pavement could be secured for only \$21,600. "Let's have the brick, by all means," the newspaper account declared.

Then it was found that since the vote in March was for macadam pavement, the \$8,000 bond issue could not be legally changed to brick pavement. After debating the issue several weeks, the council decided to call a special election in June. At this election, the brick paving carried 331 to 41.

By August of that year, nine carloads of Ohio brick had been delivered but the Village Council at the last moment decided to change to a brick made at Corunna, Mich. because over \$1,000 could be saved. President Fred Bennett, brother of the late Daisy President Charles Bennett, notified the Ohio firm not to ship any more because half of them had to be discarded because of inferior quality. "The best are none too good," the newspaper article commented.

By mid-November the job was done. It took 550,000 bricks to complete the job.

"The improvement should have been made years ago, but better late than never," the Plymouth Mail observed. "If it were not for the lateness of the season, The Mail would suggest a jolly celebration over the completion of the latest public achievement."

The last remaining block of original bricks in front of Kellogg Park were actually in good shape as they were covered over last week. They showed the years of wear, but there were no chink holes. But the rest of Main St. is smoothly paved with blacktop and one can now ride the entire length of the street without the "rumble" of the one block of brick pavement.

The Laohokow peasants of the Yantze Province of Hupen have founded a new industry — the breeding of scorpions, which are valued for their poisons, which have medical uses.

Arm Hanging From Trunk Just a Prank

Three pranksters without a sense of humor are roaming the Plymouth area.

Two reports were received by City police during the past week from motorists who saw cars pass with "bloody" arms protruding from the trunk.

One report came from Schoolcraft Rd. and the other from Ann Arbor Rd. where a motorist said he chased the car up to 70 miles an hour and lost them.

The Wayne County Sheriff's Patrol said that one of its deputies had talked with three youths earlier who probably were responsible for the prank. It is believed that they had taken the back seat out of the car and crawled into the trunk where one of the boys put cat-sup on his arm and left it dangling from the trunk.

PAINT NOW
And CHARGE IT

Take Up To 5 Months To Pay
 No Carrying Charges

THE SHERWIN-WILLIAMS CO.
 863 PENNIMAN AVE. — PLYMOUTH
 GL 3-7870

M'lady Should Take Advantage of the Pre-Christmas Specials Now Being Offered At

Pri-Bonne Beauty Salon
 37424 Ann Arbor Tr., at Newburg Road
 Clairol "Silk & Silver" or L'Oreal "Colorelle" shampoo

\$3.00 each

Permanent waves of well-known brands, all at reduced prices of \$7.50 and up. (Included with each permanent wave is an oil shampoo, a soap curd rinse, fashion haircut, protein treatment, cream rinse spray and a stylish set.)

All Haircuts tapered the Virginia Farrell way.

FOR AS LONG AS THE SUPPLY LASTS: We offer with each permanent wave of \$10 or more, samples of dermatics cream or a can of Rayette hair spray.

Make your appointment Now.

Pri-Bonne Beauty Salon
 37424 Ann Arbor Tr., at Newburg Road
 Phone: GA 7-7060 Open Evenings by Appointment

Chamber Told How
 (Continued from Page 1)

treasurer but his resignation had been accepted by the Board of Directors that morning. He will soon be transferred to another branch.

Dr. Henry Walch delivered the invocation and in his message, President George Lawton pointed out that "just because we have reached 40, we are not over the hill." He then noted progress during the past year and predicted an even brighter future.

The 39-year-old speaker, a resident of Ann Arbor, is actually a native of St. Louis but has become a leading booster of Michigan since he moved here. Here are the 12 points he made:

1. Management, industry and business must be research-minded. This does not mean hiring expensive research staffs, but giving intelligent planning to the future — such as the Wolverine Shoe Co. which was almost broke and then developed the Hush-Puppy and is doubling its production capacity.
2. Management must be flexible and alert to what research people tell us. The auto industry's reluctant move into the compact car field was cited as an example. It took consumer demand to convince major U.S. car makers, the speaker said.
3. Be courageous. Business and industry should stand up and be counted, "not avoid taking a position on issues affecting them."
4. Management must be politically oriented. "You cannot remain aloof," Martin warned. He cited the Ford Motor Co. which encouraged all employees to take a politically active posture, although the corporate position may be entirely different.
5. Management must be co-operative and willing to work with people. He referred to Gov. Swainson's early proposal to transfer some of the tax burden from business to the individual by having an income tax. The governor pleaded with business to take action, "but they sat on their hands instead." Martin believes state income tax is coming "sooner or later."
6. Management must have a negotiable posture. "Compromise is the only solution to many of today's problems. We cannot always have an impasse," the speaker declared. He struck out at those in management who "pick up their marbles and go home" if they cannot have their own way.
7. Business must communicate. He advised that it is best to let friends, employees and all know what is going on within the company — whether things are bad or good. Good public relations and advertising are also necessary and he cited the

PRE-TAILORED TOP COATS



This is a special group of fine coats made by our Custom Tailors during their slow summer season.

IN FINE IMPORTED FABRICS AVAILABLE FOR IMMEDIATE DELIVERY.

\$65 TO \$85

An unusual opportunity to own a fine tailored topcoat at a cost far below that of comparable ready-mades.

Carl Caplin Clothes
 HOTEL MAYFLOWER
 PLYMOUTH, MICHIGAN

Fisher's DOLLAR DAYS

BUY NOW FOR CHRISTMAS — AT BIG SAVINGS!

CHILD'S WHITE TINGLEY RUBBERS
 Regular \$2.49
 Now \$1.00

WOMEN'S CUBAN HEEL PLASTIC BOOTS
 Regular \$2.00
 \$1.00

CHILDREN'S - FUZZY TRIMMED FELT SLIPPERS
 Regular \$2.99
 Special \$1.65 Pair
 2 Pair \$3.00

MEN'S - OPERA TYPE HOUSE SLIPPERS
 Black with Crepe Soles
 Regular \$5.99
 Special \$3.00

Always A Favorite For Christmas

VALUABLE COUPON
 THIS COUPON IS WORTH \$1.00 On Any MEN'S ROBLEE SHOES
 Offer Good thru Saturday, Nov. 18

VALUABLE COUPON
 This Coupon is Worth \$1.00 ON ANY WOMEN'S AirStep SHOES
 Offer Good thru Saturday Nov. 18

Fisher's
 "YOUR FAMILY SHOE STORE"
 290 S. Main — Plymouth Phone GL 3-1390

OPEN FRIDAY 'TIL 9 p.m.

CASH-SAVING Values For Your HOLIDAY FEAST!

"SUPER-RIGHT" QUALITY
Smoked, Skinned
WHOLE HAMS
12 to 16 Pound Sizes
49^c LB.

"SUPER-RIGHT" QUALITY
PORK ROAST
Boston Style Butt LB. **39^c**

CUT FROM BOSTON STYLE BUTTS—"SUPER-RIGHT"
Pork Steaks LB. **49^c**

"SUPER-RIGHT" QUALITY
Polish Sausage LB. **53^c**

A&P OVEN-READY TURKEYS



"SUPER-RIGHT" QUALITY—NONE FINER!
COME SEE... YOU'LL SAVE!



10 TO 16-POUND SIZES
33^c LB.

18 TO 24-POUND SIZES
29^c LB.

5 TO 9 POUND SIZES
39^c LB.

HEAVY DUTY ALUMINUM FOIL **Reynold's Wrap** 25-FT. ROLL **63^c**
OCEAN SPRAY WHOLE OR JELLIED **Cranberry Sauce** 2 16-OZ. CANS **39^c**

"SUPER-RIGHT"
Steak Sale

ROUND Full Cut **79^c** LB.
SIRLOIN or Cube **89^c** LB.
PORTERHOUSE or Chip **99^c** LB.

Boneless Rolled Rump Roast LB. **89^c**

FRESH MUSHROOMS LB. **59^c**

A&P BRAND—OUR FINEST QUALITY
Pumpkin 2 29-OZ. CANS **29^c**
Crisco Shortening 3 POUND CAN **79^c**

Perch Fillets
CLEANED BONELESS **47^c** LB.
Cleaned Herring PAN-READY LB. **33^c**
Fresh Cleaned Smelt LB. **21^c**
Halibut Steaks IDEAL FOR BROILING LB. **49^c**
Salmon Steaks LB. **79^c**
Fish Sticks CAP'N JOHN'S 3 10-OZ. PKGS. **1.00**

A&P BRAND—OUR FINEST QUALITY
CANNED FRUIT SALE!
Fruit Cocktail
GOLDEN, UNPEELED **Apricot Halves** RED, SOUR, PITTED **Pie Cherries**

ELBERTA FREESTONE **Peach Halves** SWEET, DELICIOUS—HALVES **Bartlett Pears**

YOUR CHOICE **5** 16-OZ. CANS **99^c**

HOTHOUSE TOMATOES
FIRM, RED RIPE SLICERS **29^c** LB.

SAVE 20c—JANE PARKER
Cherry Pie ONLY **39^c**

JANE PARKER **Angel Food Cake** LARGE RING **39^c**
JANE PARKER—5 SIZES TO CHOOSE FROM **Fruit Cakes** 1 1/2-LB. SIZE **1.49**

SAVE 6c—JANE PARKER **Glazed Donuts** PKG. OF 12 **33^c**
JANE PARKER—TWIN PACK **Bake 'n' Serve Rolls** PKG. OF 12 **23^c**

ANN PAGE FINE QUALITY **Strawberry Preserves** 2-LB. JAR **65^c**
ANN PAGE FINE QUALITY **Tomato Ketchup** 2 14-OZ. BTL. **37^c**
LIGHT OR DARK BROWN OR CONFECTIONERS **Jack Frost Sugar** 2 1-LB. PKGS. **29^c**
FOR SALADS OR COOKING—A&P'S OWN **dexola Oil** QUART BTL. 7c OFF LABEL **49^c** GALLON CAN **1.79**
8c OFF LABEL **Handy Andy with Ammonia** 15-OZ. BOTTLE **29^c**

Pinconning Cheese
Delicious, Mild Flavored LB. **49^c**

CHERIO CHOCOLATE-COVERED **Ice Cream Bars** 6 BARS IN BOX **29^c**
Nutley Margarine—qtrs. 5 1-LB. CTNS. **89^c**
Ballard Biscuits OR PILLSBURY 3 TUBES OF 10 **29^c**
Good Luck Margarine 3 1-LB. CTNS. **79^c**

OCEAN SPRAY FRESH **Cranberries** LB. **19^c**
Broccoli YOUNG, TENDER SHOOTS BUNCH **29^c**
Spinach REGALO BRAND WASHED 10-OZ. BAG **19^c**
Emperor Grapes 2 LBS. **39^c**
Green Onions MILD FLAVORED 3 BUNCHES **29^c**

LOOK AT THESE LOW SOAP PRICES
Regular Cheer 3c OFF LABEL **29^c**
Giant Cheer 2 PLASTIC TUMBLERS IN BOX **78^c**
King Size Cheer 3 PLASTIC TUMBLERS IN BOX **1.32**
Dash 40c OFF LABEL 20-LB. BOX **4.19**
Dash 10c OFF LABEL GIANT PKG. **69^c**
Ivory Snow 8c OFF LABEL GIANT PKG. **70^c**
Mr. Clean 7c OFF LABEL 28-OZ. BTL. **59^c**

Kleenex Table Napkins 2 Pkg. Of 50 49^c	15c Off Label Giant Surf Premium in Pkg. 63^c	10c Off Label Praise Soap 3 Reg. Cakes in Pkg. 33^c
Save at A&P Fluffy all 3-Lb. Pkg. 79^c	Save at A&P Condensed all 49-Oz. Pkg. 79^c	Bath Size Praise Soap 2 Cakes 43^c

KRAFT'S MINIATURES **Marshmallows** 2 10-OZ. PKGS. **45^c**
Scot Tissue 2 ROLLS **27^c**
Silver Polish WRIGHT'S 8-OZ. SIZE **31^c**
Salad Dressing SHEPARD'S QT. JAR **55^c**

THE GREAT ATLANTIC & PACIFIC TEA COMPANY, INC.
A&P Super Markets
AMERICA'S DEPENDABLE FOOD MERCHANT SINCE 1859

A&P SUPER MARKET
1050 Ann Arbor Road
near Main
OPEN MONDAY THROUGH
SATURDAY
9 A.M. TO 9 P.M.
Closed Sunday As Usual



Kroger's Holiday Gift to You

Just in time to fill your savor books for Free Christmas Gifts.

... Low Prices PLUS

DOUBLE Top Value Stamps

WITH COUPON ON THE RIGHT

Nov. 15th, 16th, 17th & 18th

Get on on This Special Bonus. Fill Your Books Faster by Doing All Your Shopping with Kroger. You'll Get Low, Low Prices Plus Top Value Stamps.



COUNTRY CLUB CHOCOLATE ICE CREAM

BORDEN'S SHERBET OR COUNTRY CLUB

Ice Cream

FIRST HALF GALLON **59¢**

SECOND HALF GALLON **29¢**

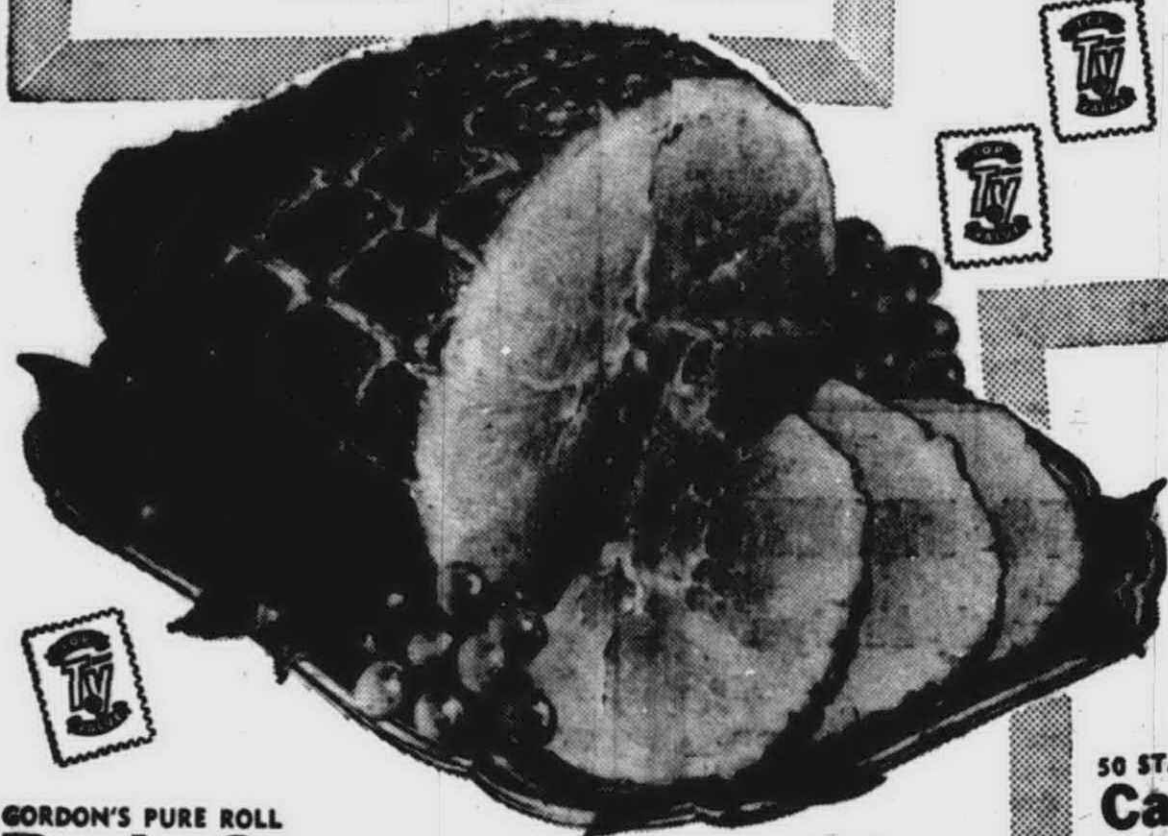
SAVE 30¢ WITH COUPON Both for 88¢

WITH THIS COUPON

Double TOP VALUE Stamps

Nov. 15th, 16th, 17th and 18th

on your total purchase of merchandise except beer, wine and cigarettes. Coupon valid thru Sat., Nov. 18, 1961 at Kroger in Detroit and Eastern Michigan.



FULL SHANK HALF

Smoked Hams **39¢** LB.

NO CENTER SLICES REMOVED!

50 STAMPS WITH COUPON—HYGRADE'S **Canned Ham** 5 LB. CAN **\$3.99**

HYGRADE'S TASTY **Boiled Ham** 6-OZ. PKG. **59¢**

SMOKED HAM **Whole or Butt PORTION** 49¢ LB.

FRESH BOSTON BUTT **Pork Roast** LB. **39¢**

All Purpose Liquid Detergent	MR. CLEAN	28-OZ. BTL.	69¢
Regular Size Bars	ZEST SOAP	2 BARS	31¢
Bath Size Bars	ZEST SOAP	2 BARS	45¢
For a Whiter Wash	DASH DETERGENT	GT. SIZE PKG.	79¢
Kroger Everyday Low Price	PINK DREFT	REG. SIZE PKG.	34¢
All Purpose Liquid Detergent	LIQUID JOY	22-OZ. BTL.	63¢

- GORDON'S PURE ROLL **Pork Sausage** 1-LB. ROLL **39¢**
- MORMEL ALL MEAT **Skinless Wieners** 1-LB. PKG. **49¢**
- ALL VARIETIES—COUNTRY CLUB SLICED **Luncheon Meat** 1-LB. PKG. **49¢**

16 Lbs. and Up Completely Cleaned

OVEN-READY **Turkeys** **28¢** Lb.

11 TO 16-LB. SIZE **Hen Turkeys** LB. **33¢**

ARMOUR STAR BRAND **Turkeys STUFFED** LB. **49¢**

4 TO 10-LB. SIZE TURKEYS **Beltsville** LB. **37¢**

PLUMP ROASTING **Chickens** LB. **39¢**

KROGER GOLDEN

Shortening

SAVE 10¢ **3** LB. CAN **59¢**

OCEAN SPRAY—WHOLE OR JELLIED

Cranberry Sauce

SAVE 6¢ **2** 300 CANS **39¢**

SAVE 6¢—KROGER BUTTERMILK VARIETY

White Bread 1-LB. LOAF **15¢**

SAVE 5¢—KROGER PLAIN, SUGAR OR COMBINATION

Fresh Donuts . . . DOZEN **21¢**

FROZEN SNIDER FARMS

Cooked Squash . . . 12-OZ. PKG. **10¢**

SAVE 10¢—Aluminum Foil **Reynolds Wrap** 25-FT. ROLL **59¢**

SAVE UP TO 11¢—Cut Corn, Peas, Green Beans **Birds Eye VEGETABLES** PKG. **17¢**

SAVE 5¢ on 2 Cans Kroger **Pie Pumpkin** . . . 10¢

SAVE 9¢—Jiffy Brand **Pie Crust MIX** . . . 2 1-OZ. PKGS. **25¢**

SAVE 5¢—None Such **Mince Meat** . . . 28-OZ. PKG. **49¢**

SAVE 10¢—Kraft's **Philadelphia CREAM CHEESE** 8-OZ. PKG. **29¢**

SAVE 10¢—Borden's **Golden Whip** . . . 8-OZ. CAN **39¢**

Rich Fresh Borden's **Whipping Cream** HALF PINT **49¢**

Borden's Delicious **Egg Nog** . . . QUART **69¢**

SAVE 17¢—Frozen Morton's **Pumpkin Pie** 3 28-OZ. PIES **\$1**

VALUABLE COUPON

50 Extra TOP VALUE Stamps

WITH THIS COUPON AND PURCHASE OF THREE 20-OZ. FROZEN MORTON'S **Pumpkin Pies**

Coupon Valid at Kroger in Detroit and Eastern Michigan thru Sat., Nov. 18, 1961.

VALUABLE COUPON

SAVE 30¢ WITH THIS COUPON BORDEN'S SHERBET OR COUNTRY CLUB

ICE CREAM

FIRST 1/4 GAL. **59¢** SECOND 1/4 GAL. **29¢**

Coupon Valid at Kroger in Detroit and Eastern Michigan thru Sat., Nov. 18, 1961.

VALUABLE COUPON

50 Extra TOP VALUE Stamps

WITH THIS COUPON AND PURCHASE OF HYGRADE'S BRAND

Canned Ham 5 LB. CAN **\$3.99**

Coupon Valid at Kroger in Detroit and Eastern Michigan thru Sat., Nov. 18, 1961.

SWEET GOLDEN PUERTO RICAN **Candy Yams** . . . 3 LBS. **29¢**

30 SIZE—FRESH CRISP CALIFORNIA **Pascal Celery** 2 STALKS **35¢**

FRESH RED INDIAN TRAIL **Cranberries** . . . 2 1-LB. BAGS **35¢**

100 EXTRA TOP VALUE STAMPS WITH COUPON AND PURCHASE OF 6-CUP CARAFE FILLED WITH SPOTLIGHT Instant Coffee

ALL FOR ONLY **\$1.59**

VALUABLE COUPON

100 Extra TOP VALUE Stamps

WITH THIS COUPON AND PURCHASE OF 6-CUP CARAFE SPOTLIGHT **Instant Coffee**

Coupon Valid at Kroger in Detroit and Eastern Michigan thru Sat., Nov. 18, 1961.



We reserve the right to limit quantities. Prices and terms effective thru Sat., Nov. 18, 1961 at Kroger in Detroit and Eastern Michigan. None sold to Detroit.

Legal Notices

J. RUSLING CUTLER, ATTY. 193 N. MAIN ST. PLYMOUTH, MICHIGAN... THE PROBATE COURT FOR THE COUNTY OF WAYNE... In the matter of the estate of ALTAINE D. POTTER...

Attends Training Course in Ohio

Attending a special "new developments" training course in Cleveland, conducted by the Sherwin-Williams Co. is Fred Hadley. The program, directed by Sherwin-Williams executives...

Football's Simple

"It's simple, you take the ball and you try to get down the field to the other team's goal" was Karla Jean Herbold's reply to a Chicago Sun-Times reporter's query to determine Northwestern co-eds knowledge of football.

Canton Parents Worried About Hazard to Children

Esther Sprengel GL 3-0194 I have received some very helpful information as to where I might find some interesting information about our Township. Just as soon as I can round the information up, we will have a little more about the history of Canton. It seems from what I have heard that you folks like this sort of thing.

still revealing her age which is now 11. Mr. and Mrs. Donald Walbridge and family have been spending much of their time recently in Albion, visiting with Mrs. Walbridge's mother who is recuperating in a hospital from recent surgery. Mrs. Olive Olsen is reported doing nicely.

enough traffic to warrant a speed zone or stop sign. However it is the contention of your writer that one child, with no place to walk but on the road, one car traveling 65 miles per hour on a gravel road is cause enough for a more careful study of the situation.

ever if the parents do not have a sitter for the evening, the youngsters of those families are welcome to come and they will be supervised by a group of Girl Scouts in another room. Mrs. Osonen states that this opportunity for the scouts to serve will work in nicely with their Child Care course and the girls are very eager to help out.

The Cherry Hill Methodist Church will hold its annual Thanksgiving Dinner on Nov. 19. Following the dinner the group will be provided with an interesting speaker. Sure would like to introduce some new names and groups to our column, along with the ones we have already met.

own house, cooks and puts my housekeeping to shame. Our children are amazed each time she visits. The Canton Township Goodfellow's met on Thursday evening to collect items for their newspaper to be sold Dec. 2. If you there will be extra papers at the Township Hall. As in the past three years, once again the news of Canton Township will be reviewed in a column of the Goodfellow paper. The column covers the period of November 1960 to November 1961.

Little Gems at Giant Savings!

IMPORTED LINDEN ALARM CLOCKS



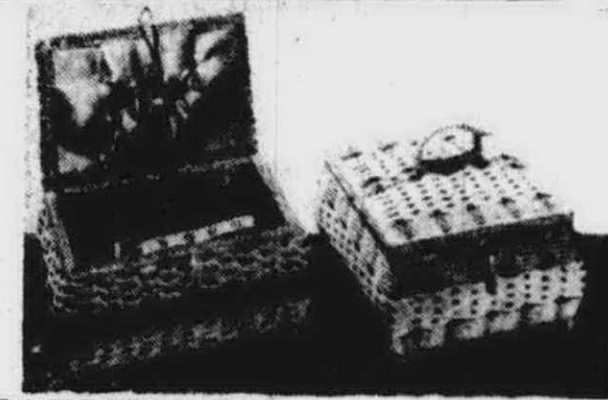
Charming Group Of Traditional And Modern Designs \$3.99

BIG LITTLE DIAMOND VALUE \$48

Everyone Fully Guaranteed

TO MAKE NEW FRIENDS! TO BRING BACK OLD FRIENDS!

MUSICAL SEWING BASKETS



Large Size Only \$3.99



Incomparable Value

Berco Watches

Shockproof Dependable Factory Guarantee

MEN'S \$9.95

LADIES' \$10.95

OPEN AN ACCOUNT

COME SEE SPECIAL!

CERAMIC SPOON RESTS 49¢

COME SEE SPECIAL!

ALUMINUM ICE BUCKET \$4.99

Smart Style

AGNEW'S 340 S. MAIN ST. Next to Kresge's PLYMOUTH, MICH. 'CREDIT FOR THE ASKING'

BOB'S PAINT SPOT PAINT Close-Out

On Discontinued Colors

ACME QUALITY HOUSE PAINT or ODORLESS ALKYD SEMI-GLOSS and FLAT ENAMEL \$2.99 GAL.

SUPER KEM-TONE Most Colors GAL \$4.98

Discontinued DUTCH BOY INTERIOR PAINT GAL \$3.99

DUTCH BOY WONSOVER A Modern Alkyld Finish - Interior Most Colors GAL \$4.99

BASEMENT WALL PAINT LOXON or REV SPECIAL - GAL \$4.98

MANY MORE SPECIALS IN OUR STORE! BOB'S PAINT SPOT 816 Penniman Plymouth GL 3-5080

Bowling Standings

Thursday Nite Owls at Northville Lanes. Lov-Lee Salon 62 14, Fluckey Ins. 25 1/2 14 1/2

Northville Lanes 25 15, Merriman Realty 24 16, Geo. Stipe Tire Co. 26 18, Wayne Door And Ply 23 1/2 16 1/2, Schrader's 20 1/2 19 1/2, B & C General Store 19 21, Koffee Kup Rest. 15 1/2 24 1/2, Short Shots 14 26, Houser's 13 27, Monte's 10 30, Ind. Hi Single - L. Mathias, 220, Ind. Hi Series - D. Estep, 513, Team Hi Single - Merriman Realty, 794, Team Hi Series - Fluckey Ins., 2197.

Sorry, Tim... Our Mistake

The Mail's sports desk did 14-year-old Tim Kellman an injustice last week when we identified the Plymouth youth as a "third-string" member on Ann Arbor's St. Thomas high school football squad. Tim, who is only a freshman at St. Thomas, is most certainly a full-fledged first-stringer. He played 28 quarters of varsity football this past fall as a tackle on both offense and defense. The 180-pounder, one of a scant few St. Thomas freshmen to earn a varsity letter, is the son of Mr. and Mrs. Norman L. Kellman, 217 Hamilton.

Parkview 5 Star. Box Bar 31 9, Thunderbird 26 1/2 13 1/2, Bill's Market 26 14, Lightfoot 24 1/2 15 1/2, Heide's Greenhouse 18 1/2 21 1/2, Davis & Lent 11 1/2 28 1/2, Beyer Rexall Drug 18 22, Parkview 4 36, Hi Team Single - Thunderbird, 891, Hi Single - Bill Stout, 220, Hi 3 game - Joe Donohue, 540, Hi Team Series - Box Bar, 2414.

1780 Elkettes. George Carr Plumbing 28 8, Keith Heating 26 10, Colonial Cleaners 26 10, Harry Taylor Roofing 17 19, Twin Pines 16 20, Mango's 15 21, Terry Bakery 14 22, Costanza's 13 1/2 22 1/2, Lovlee Beauty Salon 12 1/2 23 1/2, Berry Pontiac 12 24, Ind. High Game - Virginia Overmyer, 196, Ind. High Series - Lorry Anderson, 529, Team High Game - Twin Pines, 796, Team High Series - George Carr, 2284.

NEWS IN BRIEF

Mrs. James Gothard of Eckles Rd., Plymouth, entertained the following ladies at her club meeting last Friday evening: Mrs. Donald Melow, Mrs. George Britcher, Mrs. Carl Hartwick, Mrs. Walter Packer, Mrs. Leslie Evans, Miss Elsie Melow, Miss Sarah Gayde and Miss Hildur Carlson, all of Plymouth; and Mrs. Tim Sullivan of Penton.

NOTICE TO BIDDERS City of Plymouth, Michigan

The City of Plymouth, Michigan will receive bids up to 3 p.m., E.S.T., Friday, November 24, 1961 for petroleum products. The City Commission reserves the right to accept or reject any or all bids, in whole or in part, and to waive any irregularities. Address bids to Joseph F. Near, City Clerk, 167 S. Main Street, Plymouth, Michigan, in a sealed envelope bearing the inscription: BID FOR PETROLEUM PRODUCTS. Joseph F. Near, City Clerk

GOOD YEAR HURRY - LIMITED CHRISTMAS TIME SPECIAL OFFER! REMEMBER LAST WINTER? Thousands Got Stuck in Record Snows SUBURBANITE WINTER TIRES \$15.95. THE GREAT SONGS OF CHRISTMAS Special limited edition! A \$3.98 value. Only \$1. Ann Arbor Tire Co. 502 S. Main Ann Arbor NO 5-6175. George Stipe Tire Co. 384 Starkweather Just Off Main St. Plymouth GL 3-3165. Open 8 to 5:30 Weekdays Saturday 8 - 2

Better Home PRICES BREAK FOR DOLLAR DAYS. LOOK! 9-Piece LIVING ROOM ENSEMBLE... LOOK WHAT YOU GET: 2 Piece Modern Living Room Suite In 100% Nylon, 2 Modern Step Tables, 1 Matching Cocktail Table, 2 Table Lamps, 2 Throw Pillows. LAYAWAY NOW! For Christmas. Regular 9 Piece Complete \$289.95 Only \$199.95. Name Brand Portable T.V. Special \$124.95. General Electric Console STEREO \$50.00 \$199.95. HOLLYWOOD Bed Ensemble Save \$54.95. LAMP SALE 1/2 PRICE Large Selection From Which To Choose BUY NOW FOR CHRISTMAS GIVING. APPLIANCES FURNITURE CARPETING TELEVISION. 1009 W. Ann Arbor Road (Across from A & P Super Market) GL 3-7420

**Camp Specialist
Chosen for Scouts**

Mrs. Casper Enkemann, president of the Huron Valley Girl Scout Council is announcing the appointment of Louise Taylor as the staff specialist in camping and camp development. Miss Taylor comes from Lafayette, Indiana, where she has been the Executive Director of a nine-county Girl Scout Council. With the acquisition of several hundred acres of land in Livingston county as a Girl Scout camp site, and plans for still further expansion of the camping program, a full time staff position of camping coordinator has been created.

Miss Taylor will advise the Camping Committee of which Mrs. Charles Howe of Ann Arbor is chairman. She will coordinate all camping activities in the Council which includes Day Camping, Trip Camping, an extensive troop camp program in addition to established camping and primitive encampments. She will serve as advisor to the Camp Development Committee who will be planning for maximum use of the 400 acres of land now owned by the Huron Valley Girl Scout Council.

The Huron Valley Girl Scout Council is a Community Chest agency gaining support from sixteen Community Chest groups.

NEWS IN BRIEF —

Mr. and Mrs. Clarence Alandt of Ann Arbor Rd left for New York City last Saturday where Mr. Alandt attended a Tax Institute at New York University.

Mrs. George Todd of Pacific is entertaining tonight (Wednesday) at a Stanley Party.

The PLYMOUTH MAIL

Wednesday, November 15, 1961

Section 3



**What's Cooking In
Plymouth Kitchens?**

Mrs. Walter Gemperline is shown in the farm kitchen of her 4747 N. Territorial Rd. home, before her large collection of cook books. A collector's item is one dating back to 1846.

Despite being one of the busiest women in Plymouth, she always finds time for her favorite past-time, cooking. She currently holds the office of vice president in the Women's Society for Christian Service, is recording secretary of Sarah Ann Cochran Chapter of the D.A.R., belongs to the Woman's Club Glee Club and is a member of the Plymouth Branch of the Farm and Garden Club and the Symphony Guild.

Mrs. Gemperline, cook of the week, shares with you one of her recipes, handed down in her family, for Sugary Apple Muffins.

SUGARY APPLE MUFFINS
2 and one quarter c. sifted pastry flour
3 1/2 tsp. baking powder
1/2 tsp. salt

one quarter tsp. cinnamon
one quarter tsp. nutmeg
4 tsp. shortening
1/2 c. sugar
1 egg, beaten
1 c. finely chopped, pared and cored apples.
Sift dry ingredients. Cream shortening and sugar and beat

in egg. Add dry ingredients, alternately with milk and stir in apples. Fill greased muffin pans about two-thirds full and sprinkle with mixture of one-quarter tsp. cinnamon, one-quarter tsp. nutmeg and 2 tbsps. of sugar. Bake at 425 degrees for about twenty minutes.



Mrs. Walter Gemperline

O.E.S. Highlights

Plymouth Chapter No. 115, Order of Eastern Star held the first regular meeting on Nov. 7, 1961.

R. R. FLUCKEY
Insurance Counsel
Since 1941
Phone Glenview 3-4030

It was announced by Worthy Matron Wanda Durham that the Special meeting on Nov. 21, 1961 is school of instruction night and a potluck dinner is being served at 6:30 p.m. preceding the meeting.

Practice for all officers, including Bible Degree, will be held on Sunday, Nov. 19 at 1 p.m. Following the meeting refreshments and a social hour was enjoyed by all. Refreshments were served by P.M. Grace Hunt and her Committee.



**But Doctor . . .
Can Anyone
Wear
CONTACT
LENSES?**

Are you asking yourself this question — "Can I wear contact lenses?"

We know hundreds of people who have this question in mind and we are prepared to give you the answer as it applies to you.

Professional help will determine your need for contact lenses and provide complete assurance.

Call At Our Office

PLYMOUTH EYE CLINIC

Dr. M. A. Meyers, Optometrist in Charge

450 Forest Avenue Downtown Plymouth
On the Ground Floor Phone GL 3-8450
Hours: 9:30 to 6:30 Except Wednesday — Open Friday 'til 9

NOW! A NEW WORLD OF WORTH!



Series M80 Tandem with 10-yard dump body

CHEVROLET
NEW High Torque POWER JUST RIGHT FOR YOUR JOB

**'62 CHEVY
JOBMASTER
TRUCKS**

BUILT TO KEEP WORKING AND WORKING AND WORKING AND

WORKING AND WORKING AND WORKING AND WORKING AND

WORKING AND WORKING AND WORKING AND WORKING AND

WORKING AND WORKING AND WORKING AND WORKING AND

WORKING AND WORKING AND WORKING AND WORKING AND

WORKING AND WORKING AND WORKING AND WORKING AND

WORKING AND WORKING AND WORKING AND WORKING AND

WORKING AND WORKING AND WORKING AND WORKING AND

WORKING AND WORKING AND WORKING AND WORKING AND

WORKING AND WORKING AND WORKING AND WORKING AND

WORKING AND WORKING AND WORKING AND WORKING AND

WORKING AND WORKING AND WORKING AND WORKING AND

WORKING AND WORKING AND WORKING AND WORKING AND

WORKING AND WORKING AND WORKING AND WORKING AND

WORKING AND WORKING AND WORKING AND WORKING AND

Chevy offers sure-saving power for every truck job with a total of 10 High Torque, light-fisted engines for '62. Rugged new Chevy-GM Diesels. A new High Torque 409 V8. And a new choice of six-cylinder savings in light-duty models.

SAVING SIXES. If you've a job for a six, Chevy has a six for your job! The famed High Torque 235 Six, for instance. Or the High Torque 261 Six, this year available* for the first time in light-duty models.

EAGER EIGHTS. Four of 'em, including a brand-new High Torque 327 V8* and the mighty new 409 V8*. **DURABLE DIESELS.** New Chevrolet-GM 4-53's and 6V-53's are compact and rugged, and are backed by years of GM Diesel experience.

NEW DESIGN—NEW MODELS. New work styling permits drivers to see the road as much as 10 1/2 feet closer to the truck. Chevrolet's proved Independent Front Suspension gives you a smoother riding, harder working, longer lasting truck. Three work-proved Corvair 95's add rear-engine traction and maneuverability to the light-duty field. A total of 203 models in all. See your Chevrolet dealer. *Optional at extra cost

New Jobmaster Trucks! New Corvair 95's! New Diesels! See your local authorized Chevrolet dealer

THE PRICELESS INGREDIENT IN YOUR PRESCRIPTION IS YOUR TRUST IN THE PHARMACIST WHO FILLS IT!



TOM PERRY
MAIN ST. STORE

• SENSIBLE PRICES (THAT YOU ARE SURE OF)
• FRESH INGREDIENTS BUT MOST IMPORTANT — YOU CAN TRUST YOUR BEYER REXALL PHARMACISTS!

Rx A Word About BEYER Prescription Prices!

We fill prescriptions at competitive prices — generally we are as low or lower than anyone in town. When you bring your RX to BEYER you may be SURE it will be sensibly priced. Our policy for 54 years of being a LEADER in prices is your SAFEGUARD that the same savings will be yours on RX's as on any other item in our store.



AL LUCAS
MAIN ST. STORE

Rx Why Take Chances With Your Health!

You don't "SHOP AROUND" to find a doctor when you're ill — why run around to find a place to fill your RX. Why not go where they SPECIALIZE in filling RX's — where there are PHARMACISTS YOU GET TO KNOW! Don't take chances — you can select your RELIABLE PHARMACIST at Beyer's.



PEGGY PERTOLA
ANN ARBOR RD. STORE

Rx It's Experience That Counts!

54 years of FILLING PRESCRIPTIONS means we have over a half century of KNOW-HOW on how to properly fill your prescription. Every Beyer's Pharmacist was carefully selected to do an expert job of servicing your prescription — (not just filling it) — he is assigned only to this work — he is dedicated to applying his knowledge to what's in your prescription.

Rx Behind The Scenes!

In most cases our pharmacists are in regular contact with your physician. They consult with each other. They have an understanding of what the doctor wants — your health is our business too. We are your doctor's agent when we fill your prescription.



WALT DRUMMOND
FOREST AVE. STORE



RUSS MERITHEW
FOREST AVE. STORE



AL CAMPBELL
ANN ARBOR RD. STORE

BEYER'S REXALL BUDGET STRETCHERS — Now at BIG SAVINGS!

<p>REXALL BUFFERED ASPIRIN 60 Tabs. Reg. 69c 2 for 89c</p>	<p>REXALL Glycerin Suppositories ADULT OR INFANT Jar of 24 Reg. 89c 2 for \$1.29</p>	<p>50 PACKETS OF BOOK MATCHES STOCK UPI 15c</p>
<p>Vitamin C Tablets (ASCORBIC ACID) 100 mg. 100's - 79c Value 2 for \$1.09</p>	<p>DANE'S Saccharin Tablets 1/4-Grain, 1000's 55c Value 29c</p>	<p>ROXBURY HOT WATER BOTTLE Full Year Guarantee - White and Colors 2-Quart Reg. \$2.49 \$1.88</p>

BOYS and GIRLS! Be sure to register for REXALL'S BIG CONTEST — Win Prizes
• Stereo • Portable TV • Bikes and Many More!

Crystal Clear ICE CUBES
BUY 'EM BY THE BAGFUL!
Available at All Stores

Watch Every Thursday's Free Press for Our Ad . . . and Additional Weekly Specials Thursday through Sunday.

BEYER REXALL DRUG STORES
Serving Plymouth Over 54 Years

3 CONVENIENT LOCATIONS IN PLYMOUTH

Corner MAIN and MILL Streets
GL 3-3400
LIQUOR AND BEER AT MAIN STREET STORE

FOREST AVENUE
GL 3-2300

ANN ARBOR RD.-W. of Main St.
GL 3-6400
BEER ONLY AT ANN ARBOR ROAD STORE

The Professor Sez . . .

By Ed Brown

Last week I mentioned camping as a splendid, and economical, way of enjoying a vacation; seeing all the sights, and at the same time obtaining many things of an educational and spiritual value. Also camping experiences gives a person time to reflect and re-evaluate happenings during the past year, and to plan for the months ahead.

I have always contended that families should do more things as a unit, particularly when the children are younger and in their early teens. As the children grow older they gain new friendships, and will want to be more with their own age group, and this is an entirely natural and normal thing for them to do.

I KNOW THE many excuses for not doing things together with their children—father, and mother also in many cases, is too busy earning some money so that his family can live in modest circumstances; others will tell you the children are too young and they will do it when they get older; but as I have related above, it may be too late then. Most of these are delaying excuses for not wanting to do such things, or not thinking them as being so important.

Still other parents are too busy trying to be successful, so that their families can have all the conveniences of life, and who can be looked upon as a success in the community—chances are few will have the same definition of the word "success." It seems that today we have so many false values which spell "success" to many people—I'll touch upon this subject at a later date.

IN GOING PLACES and doing things together as a family group, a child develops a sense of comradeship, security and well-being which helps mold him into a well-rounded individual. This type of child will usually develop normally, and adjust to life in a natural way, and will have fewer problems as an adult.

On the other hand, if this fellowship does not exist in the family, a child may seek companionship with other young children his age, and may often choose the wrong type of friends, because he resents being alone and craves companionship—any kind! Parents may realize this later, but it may be too late to re-capture something that should not have been lost in the first place.

It all boils down to the plain fact that some parents do not understand young children, or feel that the children should learn to adjust to any situation regardless of age, and find out everything "the hard way"—this sometimes proves a difficult solution for most young people, and a most dangerous one. I have even heard parents say, "That is how I had to find out things, and it didn't hurt me any." I wonder!

I DO NOT mean to convey the idea that families should do everything as a group, because there are things that adults should do without the children, so as to satisfy their own adult social needs. And by no means

should a child get the feeling that he should be with his parents all the time, and not with his own age group. There are many things that can be done together, such as, playing ball, fishing, hunting, games, family picnics, camping, attending athletic contests, good shows and play productions, or by just having family discussions.

The last one is of most importance—if we could just spend a few minutes each day with our children discussing and sharing the experiences we have had that particular day, what a valuable thing it would be for all.

Too many parents think only of talking about their own problems, and forget that their children also have problems. An adult may think some of these youthful problems trifling, but they may seem enormous to the child. These moments of sharing life experiences might clear up some problems the children may have, and believe it or not, might help in clearing a few adult problems also.

Above all, a mutual feeling of being and understanding is developed, and members of the group will confide in each other—that fact alone is worth so much to a growing child—being able to confide in someone who tries to understand his problems. More on this subject later.

WHAT HAPPENED TO . . .
The all-around athlete for PHS in the early 1940s, and who for a number of years after graduation was a star on the Begliver-Olds softball team—said team being one of the best in the state in those days.

This modest, self-assuring individual made Plymouth his home for many years after graduation, but moved out of the state last year—and took three potential future athletes with him in the persons of his three husky sons named Denny, Mickey and Greg. (The coaches here still lament this fact.)

He married the former Madeline Allen, who also graduated from PHS about the same time as this former great did.

His oldest son, Denny, played some Frosh athletics here last year until they moved away during the winter. This boy was selected as one of the foremost promising Junior High athletes in the state of Arizona last year.

This former athlete now resides in Mesa, Arizona, and is the owner of a successful boat shop there—latest reports indicate that he is doing real well and business is great.

HIS NAME . . .
Howard "Muggs" Hunt.
Fall off this week, minus one—total down count, minus 4.
Mr. and Mrs. Steve Verish and Mr. and Mrs. Walter Abate were among the Clemons Dr. residents who attended the Plymouth Historical Society's annual dinner last Thursday evening.

DOLLAR DAYS

SPECIAL PANTIES
50c VALUE
3 for \$1.00



HIGHER PRICED BLOUSES
\$1.00

FAMOUS-MAKE BRAS \$1.00

MANY OTHER SPECIAL VALUES

CRAIG'S Ladies' Apparel

863 W. Ann Arbor Tr. Plymouth GL 3-2021

Kresge's

for family savings

THURSDAY
FRIDAY
SATURDAY
NOVEMBER 16-17-18

12 Extra Special REASONS Why It Pays To Shop at Kresge's in Plymouth



REASON No. 1 REG. 79c

FIRST QUALITY SEAMLESS NYLONS

WHILE QUANTITIES LAST

46

Reg. 79c pr.

PR.

LIMIT! 6 PAIRS TO A CUSTOMER!

Replenish your hosiery supply this weekend! Choose Kresge's 60 gauge, 15 denier seamless nylons from micro-mesh or clear knier in popular Sun-tone or Mist-tone shades. Take advantage of this extra special savings now!

Charge it PLEASE

Sizes 5-7, 8-10



REASON No. 4

100% acetate tricot; Elastic or band style leg. White-Blue-Pink

Women's PANTIES

Save 21c Reg. 39c Charge It! 18c pr.

REASON No. 5 WOMEN'S 32-38 Roll-Up Sleeve Blouses 1¹⁴

REASON No. 8 CORDUROY CAPRIS 1¹⁴ Pair
Hi-rise waist with side zipper; colorfast prints and solids.
Save! 12-18

REASON No. 11



Women's S-M-L Misses 3-7 Children's 2-4
Values to 89c Pr. Wool-Nylon Knit GLOVES 48c Pair

Fancy embroidered or jacquard designs, solids. Many colors.

UNHEARD-OF-VALUES!

REASON No. 6

MEN'S TIES
Reg. \$1.00 Values 38c Ea.
CHARGE IT!

SALE!

REASON No. 9

Chocolate Covered PEANUTS 38c

Reg. 59c lb.



REASON No. 7

Cloud-soft comfort Elastic edged for secure fit. Sizes 4-9; Pink-Blue-Black-Bone See-thru plastic travel case

Charge It



Flexible Foam-Cushion Insole

FOLDING SLIPPERS

Save 23c - Reg. 1.00

3-DAY DISCOUNT PRICE 77c pr.

Save!

REASON No. 10

Nylon Reinforced Heel and Toe Sizes 9-13 Wool-Blend

Charge It



CUT PRICE SPECIAL

WHITE ATHLETIC SOCKS 34c PAIR
SAVE 16c REG. 50c

NEW LOW PRICES!

REASON No. 12

IRREGULARS! BLANKETS 3⁰⁹ Each
Full 3-lb. blankets of soft rayon-acrilon blends. Satin bound. Solid colors.
CHARGE IT!

for dependable home heating...



ASHLAND FUEL OIL with S.C.A.

More and more homeowners are switching to Ashland Fuel Oil with S.C.A. for dependable home heating. S.C.A. is Ashland's exclusive Sludge Control additive that stops the formation of sludge. Fuel lines, filters, screens and nozzles stay clean. Result:

Increased burner efficiency . . . less fuel consumed . . . big savings on heating costs.
This winter, enjoy the comfort and convenience of Ashland Fuel Oil with S.C.A. For prompt, friendly service call us today!



ASHLAND OIL & REFINING COMPANY
KELSEY A. NEELY, Agent
905 Ann Arbor Road
Plymouth, Michigan
Phone: GL 3-6471

360 S. MAIN STREET STORE ONLY

PLYMOUTH

Front Row Center

By George Spelvin

"The Night of the Iguana", the new Tennessee Williams play, presently at the Shubert Theater until Nov. 19 stimulates audiences with its thought-provoking dramatic material. The latest Williams' play has the usual amount of violence, side excursion into the never-never land of perversion, and the hard-hitting realistic dialogue. But through it all old George found a more reverent Williams, a more searching Williams. For once I felt that Williams was crying out about his need for faith.

The central character in "Iguana" is a rebellious Episcopal minister. He's fighting alcoholism, loneliness, and a mental breakdown. Patrick O'Neal has a field day with this part. It's worth the price of admission alone to see him bare his soul as he tries to fight his way back to reality.

OLD GEORGE ENJOYED "Night of the Iguana" more than many of Williams' earlier works because of its more profound theme. Too often times, Tennessee will give a character practically a monologue to deliver. In "Night of the Iguana" the constant exchange of dialogue moves the show and holds your interest.

Margaret Leighton, Alan Web, Patricia Roe, and Bette Davis delineate their roles with a perfection that gives the play a luminous quality. And the setting is as Rev. Shannon says over and over, "Fantastic." My advice is to catch this play before it hits Broadway in December. You'll be "one up" on the New Yorkers by seeing it in the latest of Williams' smash hits. It'll be at the Shubert only until the 19th...

On the 19th for one day only, you'll be able to see "Pirates of Penzance" at the Shubert Theater. This is the Tyrone Guthrie production that played last summer at the Stratford Shakespeare Festival. Two performances will be given... first one at 2:30 p.m. and the second at 8 p.m. on Sunday, November 19th. Gilbert and Sullivan fans their tickets now for what promises to be a sell-out.

"ADVISE AND Consent", the dramatization of the best seller regarding troubles in Washington, opened this week at the Fisher Theater. The acoustic curtain in the balcony has been lowered to transform the Fisher into a more intimate theater for straight play presentations. Farley Granger of movie fame and Chester Morris, one of the all-time greats of stage, screen, radio-TV, are combining their talents in this big, bold, rough, tough show of politics in the Nation's capital.

It's not necessary for you to have read the Pulitzer Prize winner to be appreciated. REMEMBER THIS is the evening (Monday, Nov. 20) that the cast of "Pennypacker" will be honored. Russ Wallace promises to leave his turned-around collar at home and forget his pickled-pussid characterization of Dr. Piffeld for the evening as he shows the cast some of the color slides that he took during the run of "Pennypacker".

Phil Ashen has some photos that he will display. Tommy Webber will have some excellent shots taken with his new camera. All in all, it promises to be a gala evening. Plan now to drop around over at the Annex Auditorium and meet at the Plymouth Theatre Guild at the informal best. And don't be late. Or J. Z. will pout.

On Friday evening of this week the Vanguard opens its new venture, "Royal Gambit." Robert Roseville, popular Metropolitan, Operatic star, will be making his dramatic debut. Opening night has been sold out. You can order tickets for other evening performances by calling WO 3-3863.

Eastern Michigan University's production of "The Boy Friend" retained the flavor of the 20's and regaled the audience with authentic costumes and live music by The Bearcats. Director Bill Hulsoppe extracted every last ounce of energy out of his actors and the show moved beautifully. At times you could have sworn that mere energy and nerve was a satisfactory substitute for singing "on key".

No matter how "Boy Friend" is done with the songs sung or shouted the show is an audience-pleaser. OLD GEORGE HAS seen "Boy Friend" now about eight times. Enjoyed EMU's opening with Bill Perrin coming out to explain the show. Not too many productions employ that touch. Marjoram Glessinger and Donna Synder (Lord & Lady Brockhurst) gave brilliant performances. I thought they should have had the lead roles.

Mr. Novack as the love-sick bellhop appeared to be merely sick and minus his hop. And the first act opening without some color in the costumes of the men and dancers was quite a shock. With the bottom half of the set white, the addition of the men in white shirts made me feel I was in the middle of a snowstorm.

Let me say to Mr. Bird's credit (he designed the sets) that the other two acts were beautifully designed and were done in proper decor. One last question: how about those bathing suits used in Act II... weren't they vintage of 1900 rather than the 20's?

JACKIE GLEASON is at the Penn Theater in "The Hustler." Jackie plays it straight in this movie. He's cast as a pool shark and his lines are dramatic and far from his usual "away we go" brand of humor. Be prepared to see a rough, tough movie with Paul Newman and Jackie Gleason slugging it out for top acting honors. "The Hustler" remains at the Penn for one week.

that must be seen from the beginning to be appreciated. REMEMBER THIS is the evening (Monday, Nov. 20) that the cast of "Pennypacker" will be honored. Russ Wallace promises to leave his turned-around collar at home and forget his pickled-pussid characterization of Dr. Piffeld for the evening as he shows the cast some of the color slides that he took during the run of "Pennypacker".

novel upon which this play is based to obtain maximum enjoyment. "Advise and Consent" provides you with an evening of dramatic thrills. This Broadway hit play will be at the Fisher through November 25th with matinees on Wednesdays and Saturdays.

PROMINENT ON the local theatrical calendar is "You Can't Take It With You" (Nov. 16 & 17th) the fall high school Theatopian Club production. Dick Hays, Forest Morgenson, Susan Kelly, and Linda Wall have featured roles in this classic comedy by Kauffman and Hart. Back in 1935 when George S. and Mosa B. were getting together to collaborate on this wild, but wonderful comedy, they had a good idea to call it "Grandpa's Other Snake", but trying out the title on Mrs. K. brought negative reactions.

So the tentative title "You Can't Take It With You" was affixed. Eventually, since Sam Harris the producer liked it, the now-famous title became its permanent nom de plume.

Mr. Robert Stenger, 538 Kellogg, is directing the Plymouth High School perspiring followers-of-Theatopian. Old George followed in a dress rehearsal earlier in the week and was quite pleased at what he saw. I'd recommend this production of "You Can't Take It With You" with as much vigor as I did the fast-moving "Pennypacker" production put on recently by the Plymouth Theatre Guild. Drop over on Thursday or Friday of this week and see the show.

A hasty phone call from Producer-Director J. Z. Rump warned me that no one will be seated during the first 20 minutes of the Guild meeting. Shades of the Fisher Theater. Jon Essex told me the other evening that such rules for working out fine. Now Mr. Rump is ready to steal a little of the Fisher's thunder. J. Z. claims that citizens arriving later than 8 p.m. to the Guild meeting on the evening of November 20th will disturb his sensitive actors and ruin the opening moments of the "Infanta", a one-act play

When storms, fires or floods strike, people depend on the telephone to carry urgent—often life-saving—messages. At most Michigan Bell central offices we keep "stand-by" generators or storage batteries that can be used at a moment's notice to maintain phone service until the emergency is over. This extra "dependability insurance" is a good example of the way your telephone company plans ahead so you'll always have phone service when you need it.

NOT ALL our customers get their telephone bills at the same time of the month. Some of them have asked us why. Here's the answer: issuing bills throughout the month spreads the work load, keeping our employees who prepare bills busy during the whole month.

This makes most efficient use of billing equipment and also spreads the work load more evenly at bill payment offices. You're served more promptly than you'd be if every bill came due on the same day.

ONE OF THE ways the Telephone Company keeps the cost of your phone service low is by figuring how many calls will be made at any given time. The volume of calls varies with the time of day, the day of the week, the weather and the season. Our studies tell us how many people's expected work load. Thus there's no wasted manpower that would add to the cost of your service.

When emergencies such as storms increase calls, we can quickly bring in extra people. That's why your telephone is always ready to serve you, 24 hours a day.

NEW BOOKS

At Dunning - Hough



YOU CAN TRUST THE COMMUNISTS - Frederick Charles Schwarz. The author, who is executive director of the Christian Anti-Communist Crusade, believes that "Communists are Communists" and their plans for world conquest, as outlined in Marxist-Leninist writings, must be taken seriously. He describes their philosophy and techniques and outlines a "program for survival".

ACCREDITED IN HIGH-EDUCATION - U.S. Office of Education. Organized and edited by Lloyd E. Blau, assistant commissioner for higher education. Includes maps, tables and bibliographies of U.S. universities and colleges.

A BOOK OF BRITAIN - John Hatfield. An anthology of words and pictures of Great Britain, descriptions, modes of travel, social life and the customs of the land.

TRANSPORT BY SEA - Designed and edited by Paul Redmayne. A part of the Changing Shape of Things series. Depicts the history of commerce and shipping on the high seas, highlighted with drawings by Hans Schwartz.

THE GREEK WAY - Kathleen Freeman. An anthology of translations of Greek prose and poetry.

SIMPLE CRAFT JEWELRY - by Claude Geoffrey-Dechaume.

15-Acre Wheat Exemption No Longer in Effect

The 15-acre marketing quota exemption for wheat production is no longer in effect. Arthur Monks, Chairman, Wayne County Agricultural Stabilization and Conservation Committee, underscored this statement this week for Plymouth area farmers.

"Many farmers still ask us about this at the ASCS office," Chairman Monks said, "and I want to emphasize this change in the law."

"Under the 1962 wheat stabilization program, there is no exemption for a farm which has no 1962 wheat allotment and which did not have wheat for harvest in any one of the three years 1959, 1960, and 1961. On such a farm, the entire harvested wheat acreage would be subject to marketing quota penalty," Chairman Monks said.

"Under previous programs, farms that produced no more than 15 acres of wheat for harvest were not subject to marketing quotas even though they had allotments of less than 15 acres.

For 1962, the marketing quota exemption for a farm is the smaller of: (1) 13.5 acres, or (2) the highest acreage the farm had for harvest in the 3-year period 1959, 1960, and 1961.

The marketing quota exemption is not an allotment. If the acreage harvested is within the farm allotment, all of the wheat produced on the farm may be marketed free of the marketing quota penalty. If, however, the wheat acreage on the farm ex-

ceeds the allotment or the exemption, whichever is higher, the penalty will be computed on the acreage in excess of the allotment.

Any wheat producer who is unable to plant at least 75 per cent, or more, of his 1962 wheat acreage allotment, because of adverse weather conditions, (and who has not signed up this acreage in the 1962 Wheat Stabilization Program) will be eligible to receive wheat history acreage credit for this unplanted acreage.

ceds the allotment or the exemption, whichever is higher, the penalty will be computed on the acreage in excess of the allotment.

Any wheat producer who is unable to plant at least 75 per cent, or more, of his 1962 wheat acreage allotment, because of adverse weather conditions, (and who has not signed up this acreage in the 1962 Wheat Stabilization Program) will be eligible to receive wheat history acreage credit for this unplanted acreage.

BE SURE TO TRY OUR NEW DRY CLEANING MACHINES
TRIPLE LOAD WASHER WASHES UP TO 9' x 12' SHAG RUG
20 TOP LOADING WASHERS & 10 DRYERS PLUS 3 DOUBLE LOAD WASHERS
at TAIT'S
SELF-SERVICE LAUNDRY
937 ANN ARBOR ROAD — PLYMOUTH
WE NEVER CLOSE

LET US REMOVE YOUR DEAD TREES
or
TRIM YOUR LIVE ONES
STUMPS CUT OUT BELOW GROUND LEVEL BY SPECIAL MACHINES
No Charge for Estimates
Fully Insured
Heath Tree Service Inc.
GL 3-8672



MORE PARKING SPACE FOR FEET TOO
ADVANCED THRUST
Amazing how Buick's Advanced Thrust design has flattened the floor! The drive shaft hump you find in most cars has become a mere ripple in the '62 Buick. What happened? Both engine and transmission have been moved forward, dropping the whole drive line way down. Put the family in an Advanced Thrust '62 Buick. Enjoy real six-passenger comfort. **1962 BUICK**
SEE YOUR BUICK DEALER NOW DURING BUICK SUCCESS DAYS!

West Suburban Leukemia Group Meets Nov. 21

The next meeting of the West Suburban Chapter of the Children's Leukemia Foundation of Michigan will be held at a conference room of the Merri-Bowl Bowling Lanes, 30950 Five Mile Road (Fenkell) corner of Merriman Road, Livonia, Tuesday, Nov. 21, starting at 8:30 p.m.

The high spot of the meeting will be a talk on leukemia and related diseases by Dr. Robert Rosen, MD, Supervisory Hematologist, Children's Hospital, Detroit. Dr. Rosen is a well known authority in the field of hematology and always provides a most informative and interesting evening for those interested in blood diseases. After Dr. Rosen's formal presentation, time will be available for a question and answer session.

In line with the chapter policy, the meeting and presentation will not exceed two hours. The public is invited, especially those residents of Livonia, Farmington, Taylor, Plymouth, Northville, Garden City, Walled Lake and surrounding areas. Refreshments will be served. For further information, call GR 4-5557 or GR 4-3855.

To Post Peace Corps Test Date

Postmaster George Timpona announced today that the entrance test for the Peace Corps will be given on Tuesday and Wednesday, Nov. 28 and 29.

Within a few days information showing the place and time for the examination in this area will be posted on the bulletin board of the local post office, including stations and branches.

If you are sure and waiting for complete information at your post office.

Postmaster Timpona added that he would inform the press when the information has been received.

NEWS IN BRIEF
Sam Knapp, 497 Irvin, and his 15-year old son, Robert recently visited on Mike during Father's Weekend at U. of M. Mike is a sophomore and a member of Lambda Chi Alpha fraternity there. He is a 1960 Plymouth High graduate.

William Tallman Named Manager of D & C Store

William Tallman, 22-year-old Plymouth resident, has been named the new manager of the D & C Store at 388 South Main. A 1957 graduate of Plymouth High School, Tallman has worked in the D & C Stores chain since 1955.

Rayner Tisch, who had managed the Plymouth D & C branch since 1942, has been appointed manager of the chain's newest outlet, located in the Livonia Shopping Center. Five Mile and Farmington Roads. Tisch lives at 382 Arthur.

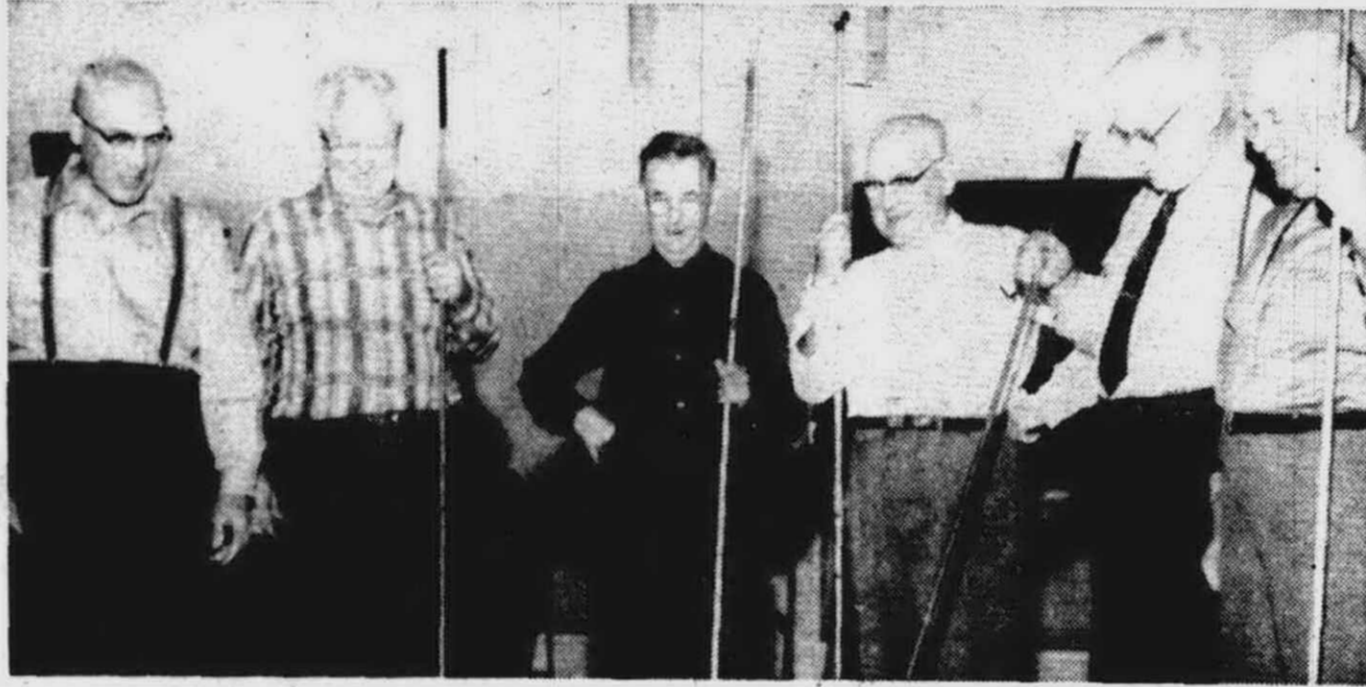
Tallman is the son of Mr. and Mrs. Charles Tallman, 9635 Haggerty and began his career with the D & C organization while he was a student at Plymouth High School in the occupational training program.

He has also worked in D & C stores in Fenton and Brighton. He previously completed a special manager's training course conducted by the 32-store chain.

Senior Citizens Shuffle It Up



BIRD SCHOOL'S multi-purpose room is the scene of fun for many of Plymouth's Senior Citizens Club members each week as they gather to try their skill at shuffleboard. Every Wednesday night, the shuffleboard clan gathers at the school as an extra activity. The club itself meets each Thursday at the Masonic Temple. From left are Mrs. L. F. Nipp, Mrs. Ethel Millard, Mrs. Emma Ladzick, Mrs. Frederica Norman, Mrs. Maude Hardy and Mrs. Lucille Keefer.



THE LADIES aren't the only shuffleboard fans, however. In another court, the men gather to polish up their game. From left are Arnold Kehrl, Virdy L. Brown, James Norman, Oren Millard, Herman Ladzick and Frank Camphausen.

Letters TO THE EDITOR

Editor:

I want to thank Peter Zylstra, Jr., for his time and effort in following through a motion made at the school board meeting on September 11, 1961, in regards to the legal use of school buses for school activities, when the expense of such transportation cannot be taken from the school funds.

If the school board had so desired, it could have saved both the band parents and the Plymouth merchants considerable time and money, and the additional money that was unnecessarily spent could have helped toward several needed scholarships at Interlochen.

Thank you again, Mr. Zylstra, for your interest in our problem. We hope that your findings will be helpful to you and the school board in the future.

Sincerely,
Rip Collins

NEWS IN BRIEF —

Mr. and Mrs. O. H. Williams of Ann Arbor Trail returned recently from a visit with their daughter and son-in-law, Capt. and Mrs. E. R. Highfield and family in Montgomery, Ala. En route they stopped at Smoky Mountain Nat'l Park where they especially enjoyed the trees in their fall colors.

The Round Table Duplicate Bridge met Monday night with 20 couples enjoying their November meeting.

\$1-Day Specials!

PLYMOUTH MEN'S WEAR
Buy Now At These Tremendous Savings
FRIDAY & SATURDAY



Men's LONG SLEEVE Pullover
SWEATERS
• V-Neck Values to \$9.95
• Crew-Neck \$4.99
• Shawl Collar

• NO REFUNDS OR EXCHANGES •



120 Pairs of MEN'S
SHOES \$5.99
SLIP-ON or Lace
SIZES 6½-12
FROM OUR STOCK

PLYMOUTH MEN'S WEAR

FOR MEN and BOYS

924 W. Ann Arbor Trail

GL 3-7360

DOLLAR DAYS

MISSES' WHITE BOBBY SOX 3 FOLD, MORPUL CUFF SIZES 8½ TO 11 3 Pr. \$1.00	CANNON WASH CLOTHS ASSORTED COLORS 13 for \$1.00
CHILD'S COTTON TRAINING PANTIES DOUBLE WEIGHT SIZES 2-4-6 4 Pr. \$1.00	BRACH'S CHOCOLATE COVERED PEANUTS 3 Lbs. \$1.00
YARD GOODS PERCALES FLANNELS - COTTONS 3 Yds. \$1.00	LADIES' COTTON PANTIES SIZES 5-6-7-8 3 for \$1.00

D & C STORE

388 S. MAIN ST. PLYMOUTH
OPEN FRIDAY NITES 'TIL 9 P.M.

DOLLAR DAYS

MEN'S and BOYS' SPORT SHIRTS 2 FOR \$3.00 • NATIONALLY-ADVERTISED BRANDS SELLING AT PRICES UP TO \$5.95, IN GROUPS • STOCK UP NOW FOR CHRISTMAS GIFTS.	MEN'S and BOYS' SWEATERS Reg. to \$9.95 Now \$5.00 • Group includes Coat and Pullover Styles MEN'S JACKETS & COATS JUST \$10.00 • Top Name Nationally-Advised Brand Regularly Selling up to \$29.95 in Group • Limited Quantity
MEN'S SOX (Reg. 2 for \$1.00) Fancies and Solids 3 FOR \$1.00	

OPEN 9-9 FRIDAYS **FAMOUS STORES** FOR MEN AND BOYS
873 W. Ann Arbor Tr. PLYMOUTH
GL 3-6030

Christmas Seal Drive Begins in Plymouth

Mrs. Richard L. Lea and Mrs. M. W. Pletcher will spark the Christmas Seal drive now underway in Plymouth.

Mrs. Lea, of 102 N. Holbrook and Mrs. Pletcher of 42513 Five Mile Rd., will distribute canisters in Plymouth and help promote the 1961 Christmas Seal Campaign which began Monday (Nov. 13) and which will continue through December.

The goal for Wayne County in the 55th annual Campaign is \$325,000.

Coins and currency placed in the canisters, along with the funds derived from Christmas Seals, are used to help support mobile chest X-ray units, tuberculin skin tests for children, health education, services to hospitalized TB patients and, of course, for research.

Posters, previously distributed by Boy Scouts, will urge Plymouth residents to "Use Christmas Seals... Fight TB... Protect The Family Circle."

Postmaster Edward L. Baker, president of the TB & Health Society, Wayne County's Christmas Seal organization, urged everyone who can to participate in the drive this year.

"The need is great," he said, pointing out that Campaigns during the past two years failed to reach their goal.

Legal Notices

William Sempliner
Attorney
1205 S. Main St.
Plymouth, Michigan
STATE OF MICHIGAN
THE PROBATE COURT FOR THE COUNTY OF WAYNE
No. 490-215

In the matter of the estate of INA MAY CULVER, deceased.
Notice is hereby given that all creditors of said deceased are required to present their claims, in writing and under oath, to said Court of the Probate Office in the City of Detroit, in said County, and to serve a copy thereof upon Howard E. Culver, Executor of said estate, at 35665 Farragut, Wayne, Michigan, on or before the 3rd day of January, A.D. 1962, and that such claims will be heard by said court, before Judge IRA G. KAUFMAN in Court Room No. 1221, City County Building in the City of Detroit, in said County, on the 3rd day of January, A.D. 1962, at 2:30 o'clock in the afternoon.
Dated Oct. 23, 1961.
IRA G. KAUFMAN
Judge of Probate

I do hereby certify that I have compared the foregoing copy with the original record thereof and have found the same to be a correct transcript of such original record.
Dated Oct. 23, 1961.
ALLEN R. EDISON
Deputy Probate Register
Published in THE PLYMOUTH MAIL once each week for three weeks successively, within thirty days from the date hereof.
(11-8, 11-15, 11-22)

You'll Receive More With "The Mail"

- FULL COVERAGE OF ALL PLYMOUTH EVENTS
- PLENTY OF NEWS ON EVERY PAGE
- VALUABLE SHOPPING MESSAGES FROM YOUR LOCAL MERCHANTS
- INFORMATION ABOUT YOU AND YOUR FRIENDS

—Clip this "DOLLAR DAYS" Coupon—

To: The Plymouth Mail
271 S. MAIN ST.
PLYMOUTH, MICH.

PLEASE PLACE MY NAME ON YOUR LIST OF SUBSCRIBERS

Bill me later for \$3.00
 Enclosed is my check (or money order) for \$3.00

Your Name _____
Your Address _____

\$3.00 WITH THIS COUPON
Regularly \$4.00 in Local Area*

* Local Area includes: Plymouth, Novi, Northville, Salem, Wayne, Garden City, Ypsilanti, Farmington and South Lyon. Subscription rates are slightly higher elsewhere.

The PLYMOUTH MAIL

STERLING EATON, PUBLISHER

EVANS' FURNITURE OF PLYMOUTH, MICHIGAN

City of Plymouth
PERMIT NO. 61-155

Going Out of BUSINESS
sale
UP TO 75% SAVINGS
• Less Than Cost
• Less Than Wholesale
ABSOLUTELY NO REASONABLE OFFER REFUSED



EVANS' FURNITURE OF PLYMOUTH
217 N. Main Street (Across from Kroger's)

OPEN 10 A.M. to 9 P.M. DAILY • SUNDAYS 12 to 6 P.M.

AFTER 30 YEARS OF HONEST DEALING IN THE CITY OF PLYMOUTH AND THE STATE OF MICHIGAN — WE ARE FORCED TO CLOSE OUR DOORS FOREVER DUE TO OUR RECENT DISASTROUS FIRE, AND OUR INABILITY TO RELOCATE IN THIS AREA PLUS THE PRESSING OF OUR CREDITORS... THEREFORE WE ARE OFFERING OUR ENTIRE STOCK OF FURNITURE... AS IS

AT ANY REASONABLE OFFER

A FEW OF MANY BARGAINS IN OUR STORE!			
\$250.00 2 PIECES LIVING ROOM ALL NYLON & RUBBER Now \$95.00	\$350.50 3 PIECES SECTIONAL CURVED SOFA ALL NYLON & RUBBER CUSHIONS Now \$135	\$129.00 RECLINER POSTURE CHAIR Naughayde - All Colors Now \$49.00	\$65.00 PLASTIC COVER SOFA-BEDS Now \$35.00
\$75.00 5 PIECE DINETTE SET Formica Top Table and 4-Del. Chairs Now \$35.00	\$175.00 4 PIECE BEDROOM SET Maple and Blonde Now \$75.00	\$14.00 TABLES • STEP • COFFEE Assorted Tables All Finishes Now \$5.00	\$25.00 KNEE HOLE DESKS Walnut, Blond, Mah. Some Formica Tops \$8, \$10, \$15, \$24.
INNERSRING MATTRESSES AND BOX SPRINGS — ALL SIZES SERTA - KRAFT - SEALY Values up to \$49, \$59, \$69, \$79. Now \$20, \$27, \$32, \$39.	\$9.00 9x12 LINOLEUM RUGS Now \$3.75	\$24.00 CRICKET ROCKER or CHAIR Solid Maple Now \$13.00	

- ALL SALES FINAL
- NO LAY-AWAYS
- CREDIT TERMS ARRANGED
- ALL ITEMS DISPLAYED FOR YOUR INSPECTION — SOLD AS FLOOR SAMPLES
- EVERYTHING MUST GO
- OFFICE EQUIPMENT AND 2 TRUCKS