



The PLYMOUTH MAIL



Wednesday, August 24, 1960, Plymouth, Michigan

Vol. 74 No. 2

Four Sections, 32 Pages

10 Cents \$4.00 Per Year In Area \$5.00 Elsewhere In U.S.A.

THE MAIL IS HOME OWNED — COMPLETELY PUBLISHED IN PLYMOUTH — BY PLYMOUTHITES — FOR PLYMOUTHITES

Teachers Have Done It Again!

Sorry Kids, School Opens In Two Weeks

Here Are Key Dates on '60 Calendar

1960-1961 PLYMOUTH SCHOOL CALENDAR
 Sept. 5, 1960, Monday, Labor Day.
 Sept. 6, 1960, Tuesday, Pre-School Planning conference.
 Sept. 7, 1960, Wednesday, Pupils Report, Full Day Session.
 Oct. 13-14, 1960, Thursday-Friday, Teachers' Institute (tentative).
 Oct. 21, 1960, Friday, First Marking Period Ends (7 weeks).
 Nov. 23, 1960, Wednesday, Thanksgiving Recess

(3:30 p.m.)
 Nov. 28, 1960, Monday, School Convenes.
 Dec. 2, 1960, Friday, Second Marking Period Ends (6 weeks).
 Dec. 22, 1960, Thursday, Christmas Vacation (3:30 p.m.)
 Jan. 3, 1961, Tuesday, School Convenes.
 Jan. 27, 1961, Friday, First Semester Ends (7 weeks).
 Jan. 30, 1961, Monday, Second Semester Begins.
 March 10, 1961, Friday, Fourth Marking Period

Ends (6 weeks).
 March 30, 1961, Thursday, Easter Vacation (3:30 p.m.)
 April 10, 1961, Monday, School Convenes.
 April 28, 1961, Friday, Fifth Marking Period Ends (7 weeks).
 May 12, 1961, Friday, Schoolmasters.
 May 30, 1961, Tuesday, Memorial Day.
 June 15, 1961, Thursday, High School Commencement.
 June 16, 1961, Friday, School Closes (7 weeks).

What's Going to Happen To Old Church Building?

An appeal for a change of zoning at the corner of Maple and Harvey streets was passed over by the City Planning Commission in a case which centers around:

"What's going to happen to the church building formerly occupied by St. John's Episcopal congregation?"

Judge Nandino Perlongo and Laurence E. Livingston of 529 Jener were the principal spokesmen asking for the change in zoning on lots in the south side of Maple between Harvey and Jener.

They said they were distressed by a report that the American Legion would soon make an offer to buy the church property and convert it into a clubhouse. (The reported sales offer was \$35,000, with a \$5,000 down payment.)

Perlongo and Livingston contended that if it became a clubhouse, the building would bring noise and traffic into a residential area, because there would be evening dances and other activities.

Perlongo noted that the existing zoning, PR-1, permits community buildings "for some strange reason, though the category is primarily intended to cover clinics and offices. He said similar zoning in other communities did not permit clubhouses. A change to R-2 zoning would not allow clubhouse usage, he added.

The petition asked that the zoning be changed from PR-1 to: (a) a lot on the corner of Harvey and Maple would be made Commercial; (b) the other lots on which the church actually stands, and two other lots to the west, would be changed to R-2, two-family residential. (The latter now are R-1, one family residen-

tial. But those directly across the street are R-2.) Robert Utter, speaking for the church, said the story about the Legion offer was a "rumor" and he said the Church would be responsible to the community as to whom it sold the property.

Utter also requested that if there was any change in zoning, that it be made uniform for all the lots involved, including the one on the corner, since he believed the package would be "easier to sell" that way.

Perlongo said the suggestion that the corner lot be made Commercial was offered because he thought it might make the lot more valuable to the church, but there was "no objection to it being made R-2 also."

Livingston noted that he owned the adjacent property and that a clubhouse located there would depreciate the value of his own home and also that of lots which he owns adjacent to the church building.

Chairman Sidney Strong of the Commission noted, however, that the board's basic policy was not to change zoning until there was a specific project involved. A report from the city's planning consultant's also defended the existing zoning, and the Commission voted to take no action.

St. John's congregation moved to a new building on Sheldon Road in May and has been negotiating to sell the old property since then. Utter said there had been "two or three offers" from churches and private schools, but that the price offered had been too low to accept.

City Taken To Court

Plymouth city officials were delivered a court summons Monday by a group which is striving to open the way to build a gasoline station on the southeast corner of Harvey and Penniman avenues.

Speedway Petroleum Corporation was one of the suiters, and it was joined by Dr. E. L. Carney, Winifred Carney, Maxwell Moon, John W. Moon, Mary K. Clendenning. The latter owns land which would be involved in the transaction.

Their suit asks the court to declare a part of the Plymouth zoning ordinance unconstitutional and also seeks a "mandatory injunction requiring the issuance of a certificate of compliance and a building permit."

Gas Station Is Sought At Harvey, Penniman

The Plymouth ordinance contains a provision which says that before a permit is issued "there must be on file with the Board of Appeals, the written consent of the owners of 60 percent of the frontage thereof of the property within 400 feet of any part of the premises, and the written consent of 80 percent of all the frontage of the

(Continued on page 8)

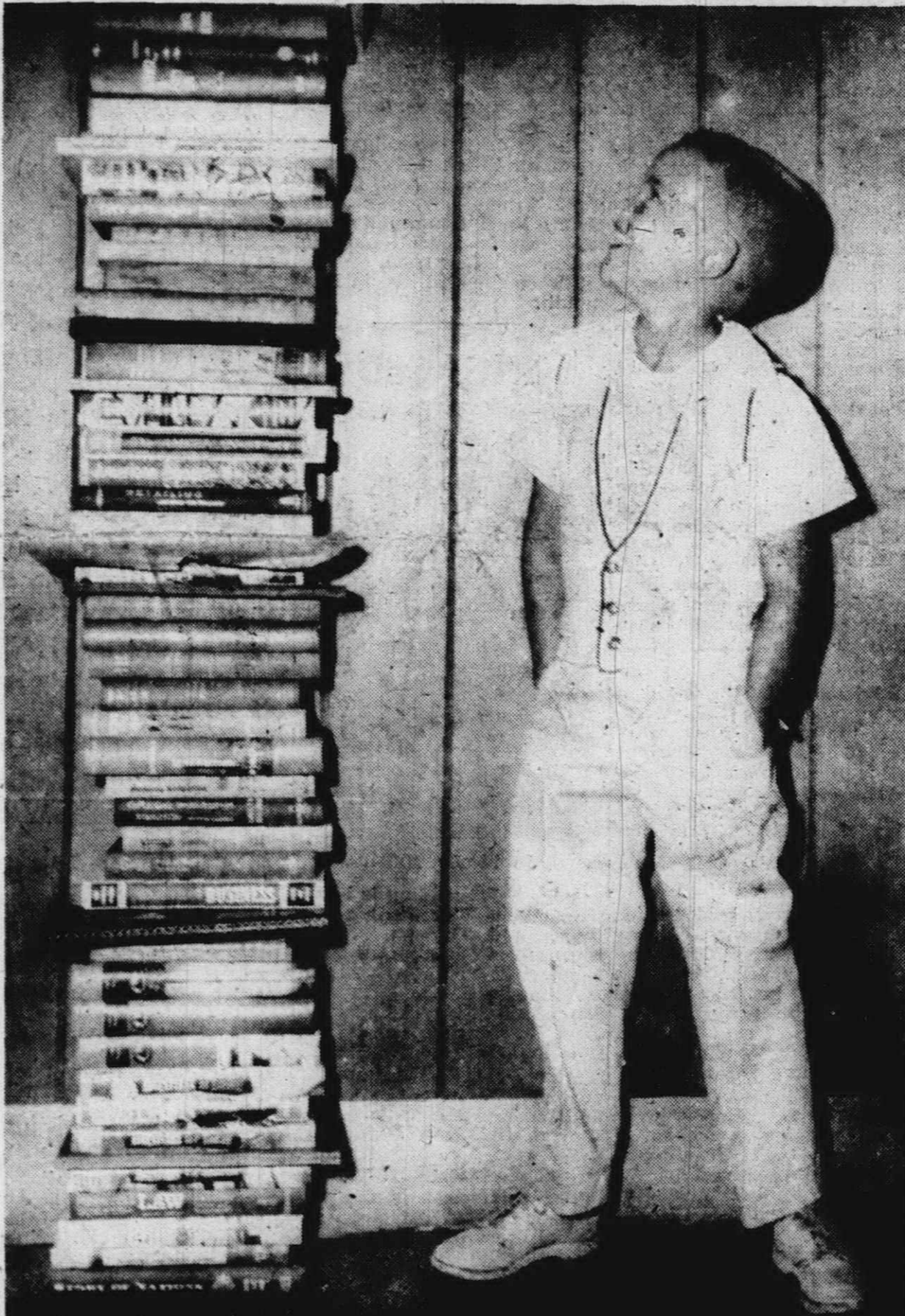
Schools Open For Churches

Parochial schools in Plymouth will open their doors Sept. 7 to over 600 youngsters of Our Lady of Good Counsel and St. Peter's Evangelical Lutheran Church.

Sister Christine, principal of Our Lady of Good Counsel, announced this week that the four-room addition to the school is completed and awaiting its new students. Registration is closed at 580 youngsters, but the new principal who replaces Acting Principal Sister Annice, suggested that parish members contact her to be placed on the waiting list.

Mass is held for OLCG students at 8 a.m. each day. They return to their homes to begin the day's study, under the direction of 12 teachers. Boys of the school may join in an athletic program under the direction of a coach.

The day at the Lutheran Day School begins with an opening worship service at 8:30 a.m. Principal Richard Scharf listed Miss Barbara Ebe as the school's newest teacher. She joins the four-member staff, led by Scharf who teaches grades six through eight. Over 80 youngsters are now enrolled, but as 100 can be taught in the school, the principal asked that interested parents contact him at the church office. Tuition students, not members of the congregation, are also accepted.



"MY FATE, MY FUTURE" is probably the thought crossing the mind of Ross DeMeritt, who enters first grade at Bird School when the new session resumes Sept. 7. All these books, and more, will have to be handled before the finish in the long years ahead. Ross is the son of Mr. and Mrs. H. L. DeMeritt and his forebodings (if they exist) and common to hundreds of other Plymouth youngsters who see summer vacation grinding to a halt soon.

for building and sinking fund; 2.8 for debt retirement. Last year's comparable figures were 14.40 for general operating; 2.5 for building and sinking fund; 4.17 for debt, retirement.

Impact Varies In District

School Tax Set At 21.90 Mills

Next year's tax "rate" in the Plymouth Community School District will be 21.90 mills, the Board of Education voted Monday night.

This compares to 21.07 mills in the previous year and the new figure is exactly what the Board estimated it would be at the time recent new ballot proposals were passed.

The amount of the total increase in dollars will vary from place to place and from property to property, however, because the "rate" must be applied against state equalized property assessments.

In some parts of the District there have been rather important shifts in assessment figures—particularly in the case of City of Plymouth real estate owners, such as Canton Township, the only difference this time will be the relatively small .83 mills per \$1,000 of valuation.

It's official, kids. They're going to have school again this fall.

And it starts—for everyone in the Plymouth District—on Wednesday, Sept. 7, at 8:30 a.m.

Superintendent Russell L. Isbister released the full calendar and all other pertinent Back to School data today, confirming what most youngsters have been suspecting recently. The summer vacation has almost entirely slipped away.

And if the youngsters feel that time has passed too swiftly, maybe the fate of the teachers will be of some comfort.

Almost all of the teachers will report for action next Monday, Aug. 29, when three special Workshop Programs begin a five-day stand. In these Workshops, the teachers' brush up on key points before plunging into their regular instructional duties.

All pupils who have been registered in the past, report for regular classes on Sept. 7 at 8:30 a.m.

Pupils who have not been classified in the past are asked to report before school opens at the principal's office in the building which they will attend.

New and used school books go on sale at noon on Sept. 6 (for high school students) and at 8 a.m. on Sept. 7 (for junior high students).

School boundaries are contained in an official Board of Education advertisement appearing elsewhere in today's The Mail. The same ad contains other vital data, including rules on

bus transportation.

A record 4,900 students are expected in all grades in the Plymouth system this year, about 250 more than a year ago.

Five new rooms will open at Smith School this year and four rooms at Bird School, but there's a photo finish involved as to whether everything will be in place by opening day. The builders are rushing.

At Smith, four classrooms and a new kindergarten will accommodate 180 more students. At Bird, it's three classrooms and a kindergarten for an increase of 150.

Starkweather School also is undergoing some interior reconstruction which probably won't be entirely finished until mid-October. A new multipurpose room is a main portion of the project.

And, all over the District, there's new paint, improved heating plants, repaired roofing, and all the other bric-a-brac which contribute to that unique "first day of school smell."

One new project which is exciting high school officials is a "Language Laboratory." It's part of a new emphasis on foreign language instruction, and will utilize tape records, visual aids, and other new devices in the field of language teaching. The faculty involved will spend some time in a similar laboratory in Grosse Pointe prior to the opening of school here.

The curriculum has been enlarged so that it is now possible for a student to take four straight years of Latin, French or Spanish.

Neighbors State Concern About Appearance of New Junior High

Residents in the area of the new Junior High site at Sheldon Rd. and Ann Arbor Trail this week asked the school board to give careful thought to how the new building would appear within the neighborhood.

They particularly asked that the school's "best face" front on Sheldon, rather than Ann Arbor Trail, and that the parking be kept to the rear, with entrances and exits off Ann Arbor Trail.

A formal letter was presented to the Board signed by Dr. and Mrs. R. S. Jenkins, 525 Sheldon; Arthur E. Larson, 1461 Maple; William J. Resch, 539 Sheldon; Paul D. Malboeuf, 555 Sheldon; Nell T. Curry, 1437 Maple; Margaret R. Hough, 1477 Ann Arbor Trail;

Charlotte Stadtmiller, 569 of three spokesmen who appeared at a Board meeting Monday night.

"We want everyone to understand that we aren't objecting to building on this site," said Dr. Jenkins, one

(Continued on page 8)

Fun Downtown This Week

Back-to-school time needn't be a sad time for youngsters. The Plymouth Chamber of Commerce and the Retail Merchants Division of that organization are seeing that Plymouth finds it a fun time with their "Back-to-School Days" promotion. The "Days" will begin Thursday with specials for the teens.

Part of the C. of C.'s Back-to-School Days promotion, Teen Day, will feature teens as salespeople and will cater especially to the young people of that age group. During the days, ages 5-12 and 13-19 may sign for free gift certificates, \$25 in each of the two categories, at a street dance, tonight at 8 p.m., will begin the "Days." Refreshments will

Lester MacIsaac Dies



of the Plymouth Branch of National Bank of Detroit for the past five years.

MacIsaac died of a heart attack at Sarnia, Ont. at 10 a.m. on Saturday, Aug. 20, 1960. He had been vacationing.

A member of Plymouth Rotary Club and the Lutheran Laymen League, MacIsaac resided at 11400 Longacre, Detroit 27. He was born July 27, 1908 in Crediton, Ont. His wife, Wilma, survives and so does a daughter, Sylvia Judd of Detroit; a son John, of Detroit; and a sister, Mrs. Helen Young of London, Ont. There also are four grandchildren.

MacIsaac's body lay in state until Tuesday morning at Schmalzriedt Sons Funeral Home, with the funeral at 1 p.m. at Holy Cross Lutheran Church, the Rev. A. W. Born officiating.

Burial was in Glen Eden cemetery, Livonia.



IT'S 1895 IN Huston's Hardware store, complete with base-burner stoves, milk pails and a salesman in a swallow-tail coat. This picture was taken a year after Edson and Elmer Huston opened their "New Cash Hardware" on Sutton St. (now Penniman Ave.). After 66 years serving Plymouth, Huston's will close this week with a major sale. (See Advertisement in This paper.)